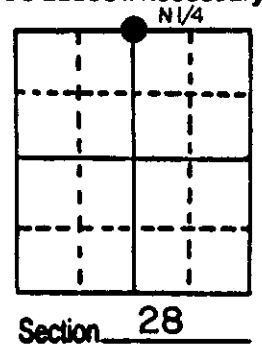


U.S. PUBLIC LAND SURVEY MONUMENT RECORD

Note: This form is intended and designed to fulfill all requirements of Wisconsin Administrative Code, Chapter A-E 5.02, U.S. Public Land Survey Monument Record (3) (a) (b) (c) (d) (e) (f) (g) (h) (i). An additional sheet may be added if necessary to conform with said requirements.

(a) Corner location: Township 37 North
 Range 9 East ~~West~~
 Town/City/Village Pine Lake
 County Oneida



(b) (f) (g) (h) Description of monument found at this corner and if it was accepted, state all evidence (material, testimonial, occupational, plats, records, other monuments) used as a basis for accepting. If not accepted or if nothing was found, state evidence used as basis for establishing location. If reestablished through lost corner proportionate methods, indicate all monuments, distances and directions used to establish.

- 1863 William Daugherty set original corner. West between 21 and 28 40.20 set 1/4 post. BT's Y. Pine 10" S 56° W 16 lks, Maple 8" N 58° E 19 lks.
- 1904 D.H.V. found Dorr's Spruce BT and post.
- 1947 Lytle set 16" x 3/4" bolt at corner.
- 1986 I found D.O.T. reference monuments as shown below.

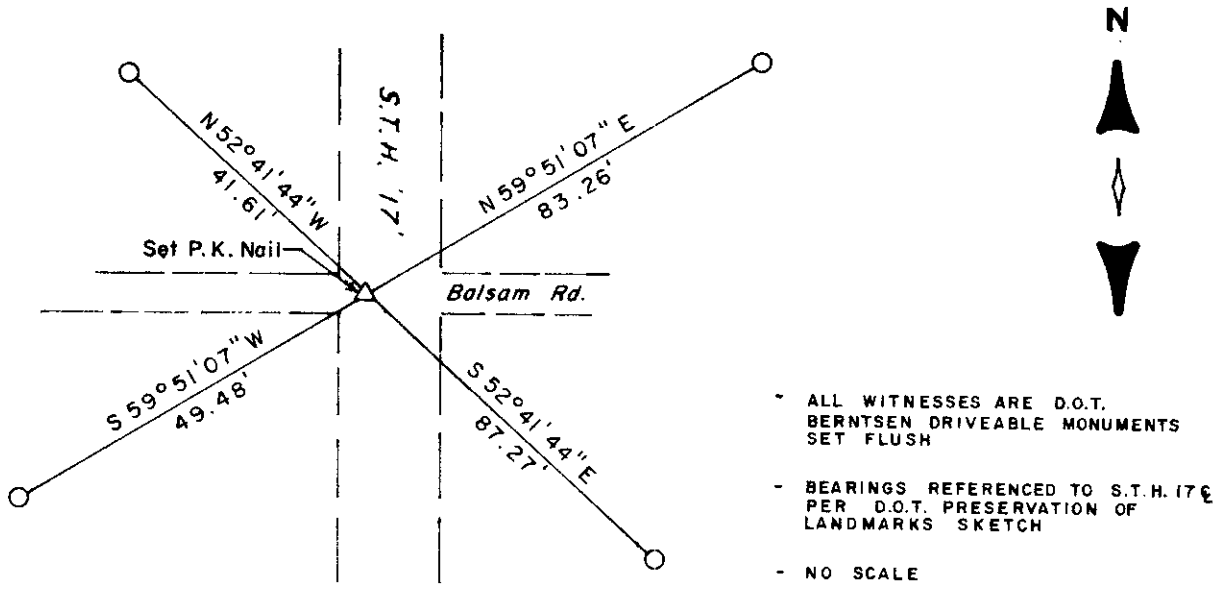
**REGISTER OF DEEDS OFFICE
ONEIDA COUNTY, WIS.**

FILED

FEB 10 1989

DORIS VERAGE KUEHN
REGISTER OF DEEDS

(c) (d) (e) Plan view of corner with ties to at least 4 witness monuments. If in disagreement with previously established corner, show the distances between the two corners and also indicate the ties to the disputed corner.



(i) I, William E. Bandow R.L.S. 1182
 (type or print name) certify that the corner location on this record was determined by me or under my direction and control and that this U.S. Public Land Survey Monument Record is correct and complete to the best of my knowledge and belief.

William E. Bandow 9-25-86
 Signature Date



GENISOT & ASSOCIATES INC.
 1512 EAGLE ST., RHINE, WI.

Index No. R-11

3709210020

U.S. PUBLIC LAND SURVEY MONUMENT RECORD

NOTE: This form is intended and designed to fulfill all requirements of Wisconsin Administrative Code, Chapter A-E 7.08 U.S. Public Land Survey Monument Record (3)(a)(b)(c)(d)(e)(f)(g)(h)(i). An additional sheet may be added if necessary to conform with said requirements.

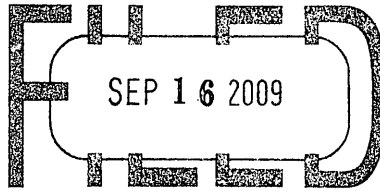
(a) Corner location: Township 37 North

Range 9 East

Town of Pine Lake

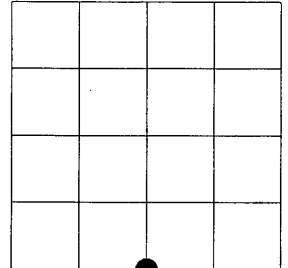
Oneida County, Wisconsin

REGISTER OF DEEDS OFFICE
ONEIDA COUNTY, WIS.



At _____ O'Clock _____ M
THOMAS H. LEIGHTON

REGISTER OF DEEDS

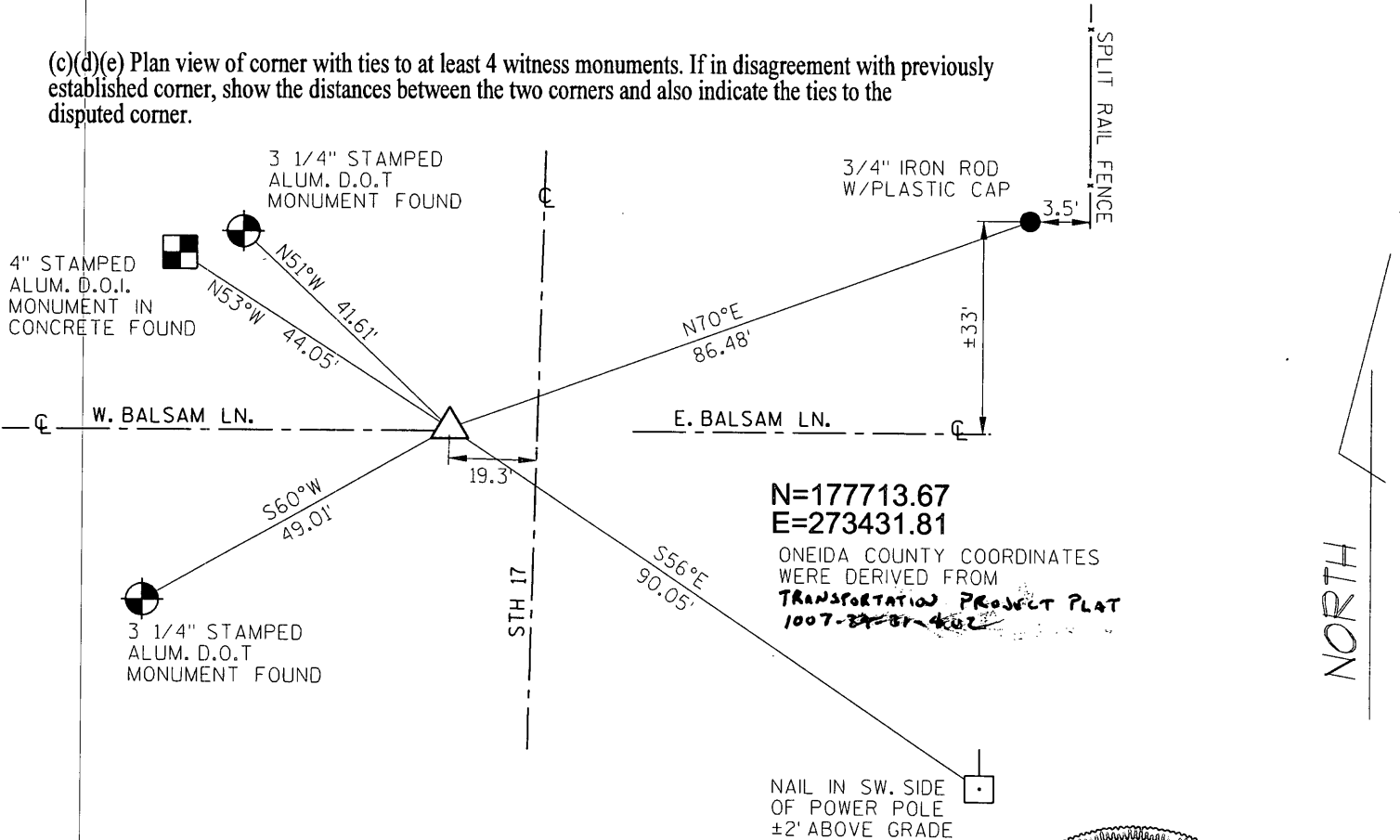


Section 21

(b)(f)(g)(h) Description of monument found at this corner and if it was accepted, state all evidence (material, testimonial, occupational, plats, records, other monuments) used as a basis for accepting. If not accepted or if nothing was found, state evidence used as basis for establishing location. If reestablished through lost corner proportionate methods, indicate all monuments, distances and directions used to establish. Indicate type of monument found or set and sign post.

- 1862 - William Daugherty set Quarter Section Post. BT's Yellow Pine 10 S56W, Maple 8 N58E 19.
- 1904 - D.H.V. finds a Spruce BT and Post (Referred to as Dorr's on 1986 USPLS Record by Bill Badow).
- 1947 - Lytle sets 16"X3/4" bolt at corner (Referred to on 1986 USPLS Record by Bill Badow).
- 1986 - William E. Badow Sets PK Nail from DOT Reference Monuments.
- 1987 - William E. Badow Finds PK Nail from DOT Reference Monuments on Map C580.
- 2000 - William E. Badow Finds PK Nail Certified Survey Map No. 2771.
- 2001 - James L. Will Finds PK Nail Survey Map B4459.
- 2001 - Russell F. Brown Finds PK Nail Survey Map B4903.
- 2005 - Eugene C. Uttech Finds PK Nail Certified Survey Map No. 3263.
- 2008 - Eugene C. Uttech Finds PK (Mag) Nail (Mag) For Transportation Project Plat 2007-39-21-4.02 at a computed position from Previous work and sets witnesses as shown below.

(c)(d)(e) Plan view of corner with ties to at least 4 witness monuments. If in disagreement with previously established corner, show the distances between the two corners and also indicate the ties to the disputed corner.



(i) I, Jeffrey L. DeMuth, Registered Land Surveyor #S-2656, hereby certify that the corner location on this record was determined by me or under my direction and control and that this U.S. Public Land Survey Monument Record is correct and complete to the best of my knowledge and belief.

Signature

10/20/2008
Date



Index No. R 11

3709210020