

# U.S. PUBLIC LAND SURVEY MONUMENT RECORD

NOTE: This form is intended and designed to fulfill all requirements of Wisconsin Administrative Code, Chapter A-E 7.08 U.S. Public Land Survey Monument Record (3)(a)(b)(c)(d)(e)(f)(g)(h)(i). An additional sheet may be added if necessary to conform with said requirements.

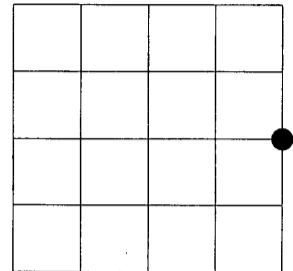
(a) Corner location: Township 37 North

Range 9 East

Town of Pine Lake

Oneida County, Wisconsin

ONEIDA COUNTY COORDS.  
N=180,289.93  
E=276,130.74



Section 21

(b)(f)(g)(h) Description of monument found at this corner and if it was accepted, state all evidence (material, testimonial, occupational, plats, records, other monuments) used as a basis for accepting. If not accepted or if nothing was found, state evidence used as basis for establishing location. If reestablished through lost corner proportionate methods, indicate all monuments, distances and directions used to establish. Indicate type of monument found or set and sign post.

1863 - William Daugherty set quarter section post, BT's tamarack 8 N87W 14, tamarack 10 S40E 9

1958 - RIPCO Notes Reference this corner, BT's 3" MR S25W 661ks, 9" (OH)AQ S81E 221ks

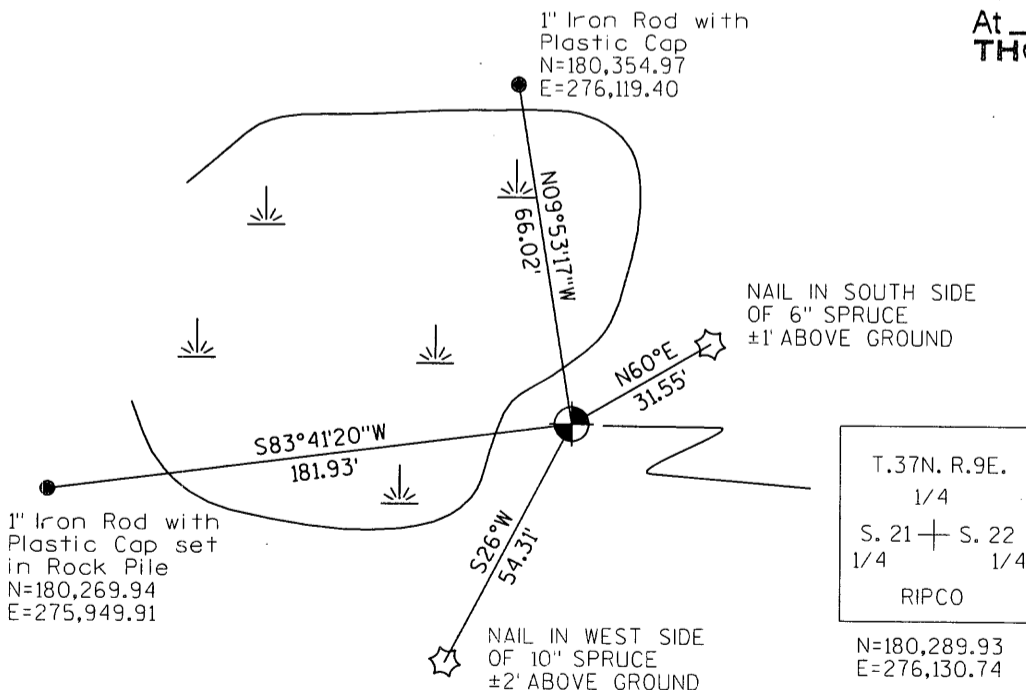
1994 - Russel F. Brown finds 2" Capped Iron Pipe Genisot DWG. NO. 9428

1996 - William E. Bandow finds 2" Capped Iron Pipe, CSM No. 1890

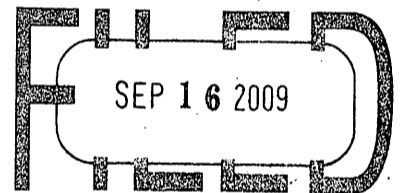
2008 - I find 2" Iron Pipe with 3" Square RIPCO Tablet, Projecting ±2.5' above ground. Set ties as shown below.

(c)(d)(e) Plan view of corner with ties to at least 4 witness monuments. If in disagreement with previously established corner, show the distances between the two corners and also indicate the ties to the disputed corner.

2" IRON PIPE WITH 3" SQUARE RIPCO TABLET



REGISTER OF DEEDS OFFICE  
ONEIDA COUNTY, WIS.



At \_\_\_\_\_ O'Clock \_\_\_\_\_ M  
**THOMAS H. LEIGHTON**  
REGISTER OF DEEDS

(i) I, Jeffrey L. DeMuth, Registered Land Surveyor #S-2656, hereby certify that the corner location on this record was determined by me or under my direction and control and that this U.S. Public Land Survey Monument Record is correct and complete to the best of my knowledge and belief.

Signature

*Jeffrey L. DeMuth*

10/26/2008  
Date



3709212000

Index No. P13