

This form is intended to fulfill the requirements of Chapter A-E 7.08 (3)(a) thru (i) U.S. Public Land Survey Monument Location Record, Wisconsin Administrative Code. Use the reverse side of form for continuation.

U.S. PUBLIC LAND SURVEY MONUMENT LOCATION RECORD

USPLS CORNER: North 1/4 Corner SECTION: 26 TOWNSHIP: 37 NORTH RANGE: 9 East
 NAME OF WATERWAY FOR M.C. CORNER: N/A SECTION LINE: N/A
 (CITY)(VILLAGE)(TOWN) OF: Town of Pine Lake COUNTY OF: Oneida

Description of monument found or placed and all other evidence used as the basis for monument location; including monuments and related measurements required if the corner location was reestablished by lost corner proportionate methods. Also indicate name of original surveyor, original survey date and the corner monument, bearing trees, witness or other reference monuments established; including measured bearing and distance ties, from available records.

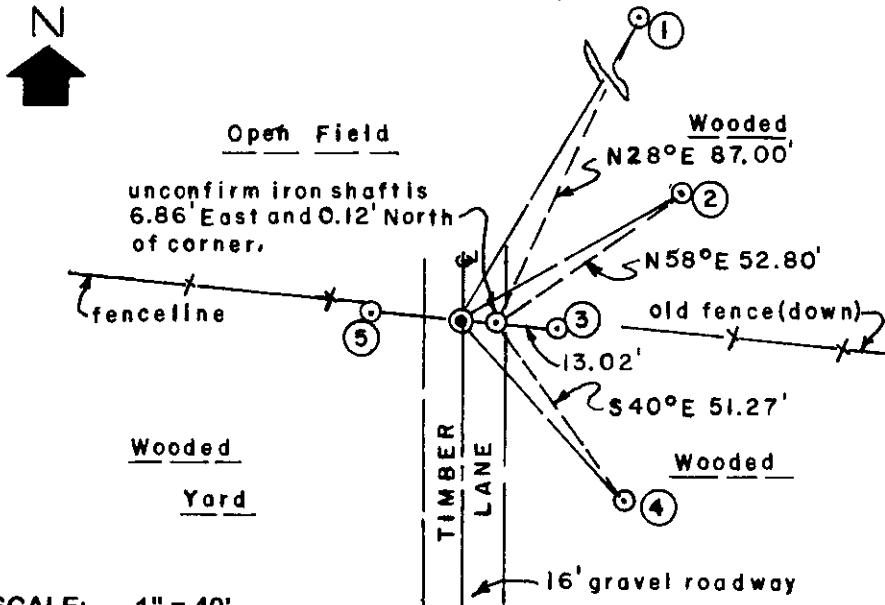
Found and accepted uncapped fluorescent orange painted top of an old 1" dia. iron pipe monument 4"+ below existing gravel road surface; corner falls in center of roadway to south and on old fencelines leading East and West. Also found a 3/4" dia. iron shaft 7"+ below the roadway referenced by a 2" dia. aluminum pipe monument with stamped Oneida County cap 5" above grade East of the iron pipe, which I have been unable to confirm by records research or query to several local surveyors and Consolidated Papers, Inc. owner of land NW of the corner.

In 1863, William E. Daugherty/GLO set a wood post as the original corner and marked OBTs: A 10" Pw N04°W 11 links and a 10" Py S18°E 12? links, which are all now obliterated. In 1903, Vaughan found SE OBT and post at corner and he marked a new BT 18" Pw S03°W 35 links, now gone in roadway area; per Old Field Book 4a Page 30 in Oneida County survey records.

In 1955, Norman Loftus, RLS 259, found and accepted an iron pipe monument as corner in center of an existing road on an East/West fenceline, which he further verified by retracement to C1/4 corner by Dorr to the North and to West 1/8th corner by Vaughan in 1903 per Old Field Book 9 Page 5 in Oneida County survey records; and in 1974, he again found and accepted the iron pipe during his survey of the NENW of Section 26 for owner Donald Bragg, who accepts the iron shaft as roadway was relocated, but does not know by whom or when the shaft and aluminum reference pipe were set.

In 1995, Todd Loftus, RLS 1523, found and accepted the iron pipe at this corner per his plat of survey filed as C-1205 in Oneida County survey records. By common report the iron pipe has been accepted as the corner for nearly 45 years.

Plan view map of monument location with bearing and distance ties to a minimum of four(4) described witness or reference monuments of concrete, natural stone, iron, live bearing trees or equivalent material. If applicable, also show a minimum of two(2) bearing and distance ties to any other monument found and not accepted; including the bearing and distance from the accepted monument.



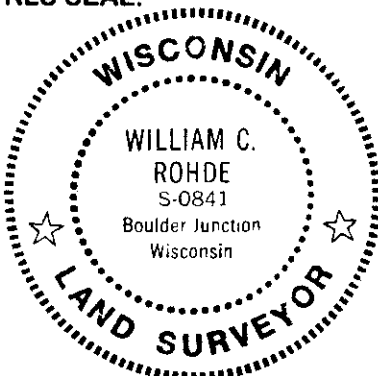
WITNESS MONUMENT TIES:

- ① Old BT 16" Pr with upper & lower blazes shut but plain, N30°E 90.22'.
- ② New BT 10" Pj N60°E 58.50' to PK nail and washer in left face.
- ③ 2" dia. aluminum pipe reference found with stamped Oneida County cap S85°E 19.88'; standard white poly 'T' marker post set 6" East.
- ④ New BT west 12" trunk of two Pw S42°E 56.11'.
- ⑤ 1" dia. by 24" long iron pipe set with Reference Mark cap flush with grade N85°W at 19.16'.

SCALE: 1" = 40'

Unless otherwise indicated, all bearing tree ties are to a .25" dia. by 2.5" long PK nail with a 1.25" dia. steel washer driven into unblazed right face and a .25" dia. by 2.5" long PK nail with a 2" dia. steel washer stamped BT is also driven into unblazed face of bearing tree at DBH; the basis for measured bearings is by compass to nearest degree and all tie distances are measured horizontal by steel tape corrected to nearest 1/100th feet at standard temperature of 68° F.

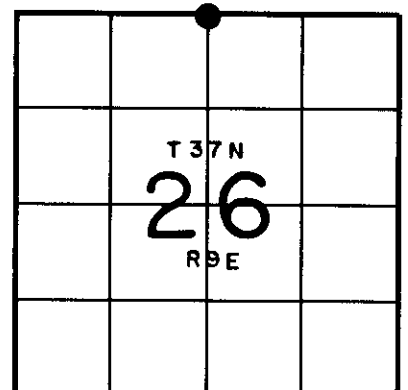
RLS SEAL:



LAND SURVEYOR CERTIFICATE:

I, William C. Rohde, hereby certify that I am duly licensed as a Professional Land Surveyor in the State of Wisconsin; that this USPLS monument location was determined by me and/or under my direct supervision and control; and that this U.S. Public Land Survey Monument Location Record is true and correct to the best of my knowledge and belief.

Signed: *William C. Rohde*
 William C. Rohde RLS 841



SECTION LOCATION MAP

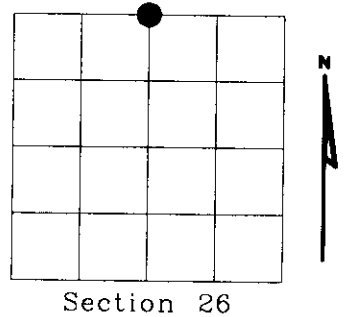
INDEX NO. R 19

3709230020

U.S. PUBLIC LAND SURVEY MONUMENT RECORD

NOTE: This form is intended and designed to fulfill all requirements of Wisconsin Administrative Code, Chapter A-E 7.08 U.S. Public Land Survey Monument Record (3)(a)(b)(c)(d)(e)(f)(g)(h)(i). An additional sheet may be added if necessary to conform with said requirements

(a) Corner location: Township 37 North
 Range 09 East
 Town of PINE LAKE
 ONEIDA County, Wisconsin



Section 26

(b)(f)(g)(h) Description of monument found at this corner and if it was accepted, state all evidence (material, testimonial, occupational, plats, records, other monuments) used as a basis for accepting. If not accepted or if nothing was found, state evidence used as basis for establishing location. If reestablished through lost corner proportionate methods, indicate all monuments, distances and directions used to establish. Indicate type of monument found or set and sign post.

In 1863, William E. Daugherty/GLO set a wood post as the original corner and marked OBIs: A 10" White Pine N04°W 11 links and a 10" Yellow Pine S18°E 12? links, which are all now obliterated. In 1903, Vaughan found SE OBT and post at corner and he marked a new BT 18" White Pine S03°W 35 links, now gone in roadway area; per Old Field Book 4a Page 30 in Oneida County survey records.

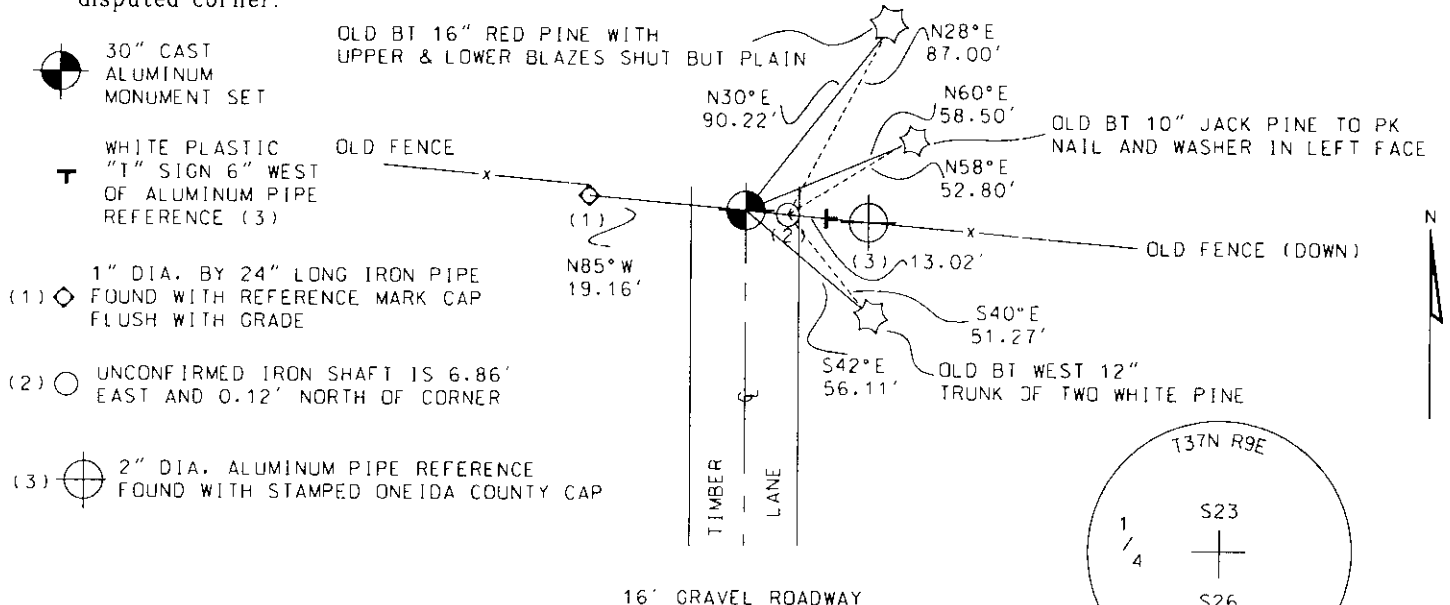
In 1955, Norman Loftus, RLS 259, found and accepted an iron pipe monument as corner in center of an existing road on an East/West fence line, which he further verified by retracement to C1/4 corner by Dorr to the North and to West 1/8th corner by Vaughan in 1903 per Old Field Book 9 Page 5 in Oneida County survey records; and in 1974, he again found and accepted the iron pipe during his survey of NENW of Section 26 for owner Donald Bragg, who accepts the iron shaft as roadway was relocated, but does not know by whom or when the shaft and aluminum reference pipe were set.

In 1995, Todd Loftus, RLS 1523, found and accepted the iron pipe at this corner per his plat of survey filed as C-1205 in Oneida County survey records. By common report the iron pipe has been accepted as the corner for nearly 45 years.

Found and accepted uncapped fluorescent orange painted top of an old 1" dia. iron pipe monument 4" +/- below existing gravel road surface; corner falls in center of roadway to south and on old fence lines leading East and West. Also found a 3/4" dia. iron shaft 7" +/- below the roadway referenced by a 2" dia. aluminum pipe monument with stamped Oneida county cap 5" above grade East of the iron pipe, which I have been unable to confirm by records research or query to several local surveyors and Consolidated Papers, Inc. owner of land NW of the corner

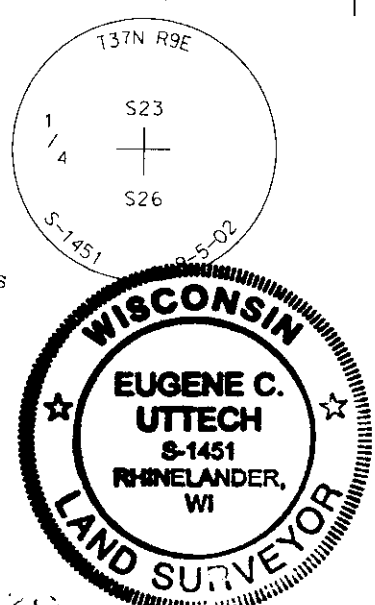
2002- 1" dia. iron pipe found and accepted by William G. Rhode in 1999, was missing - used existing ties and set Oneida County aluminum monument.

(c)(d)(e) Plan view of corner with ties to at least 4 witness monuments. If in disagreement with previously established corner, show the distances between the two corners and also indicate the ties to the disputed corner.



(i) I, Eugene C. Uttech, Registered Land Surveyor *S-1451, hereby certify that the corner location on this record was determined by me or under my direction and control and that this U.S. Public Land Survey Monument Record is correct and complete to the best of my knowledge and belief.

Eugene C. Uttech
 Signature
 11/26/02
 9/26/02
 Date



Index No. R 19

3109230020