

CERTIFIED LAND CORNER RESTORATION

Index No. P-21

3709732000

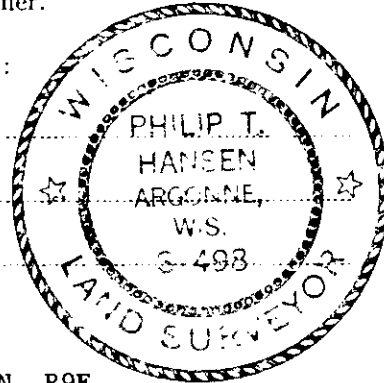
State of Wisconsin }
County of Oneida } ss.

I, Philip T. Hansen, do hereby certify that on the 12th day of June, 1980, I found evidence of the Quarter corner of Sections 23 and 24 Township 27, North, Range 9 East, Fourth Principal Meridian, as described hereon; and that from this evidence I established a new monument and accessories as described hereon to perpetuate the original location of this corner.

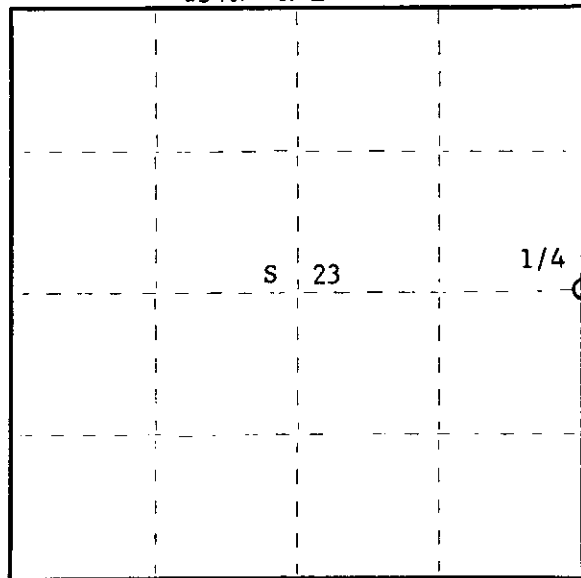
Resident witnesses:

Glen Barker

Jim Claflin



T37N R9E



○ = Corner monument restored.

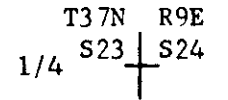
History of original corner establishment:

N. Loftus and Alexander, Ripco surveyors, recovered an old squared post in 1956. Set a new iron pipe. No record of any BT's established.

Description of corner evidence found:

Recovered Ripco's 2" iron pipe with 4" square brass cap in good condition. Also recovered an old 4" square cedar post beside it. Recovered OBT's - cedar stump 7" S6°E 37.0 links, scribed 1/4S BT (this is not Ripco's BT) Maple 8" N25°W 34.0 links, scribed 1/4 BT. B.Ash 6" S39°E 19.0 links, scribing grown over.

Monument projects 3' - cap stamped:



Description of monument and accessories I established to perpetuate the original location of this corner.

Left monument in place as recovered.

Marked NBT's -
Maple 7" S45°W 47.8 links
Maple 5" N63°W 29.3 links
both scribed 1/4S BT.

Dated at Rhineland, Wis., this 21st day of July, 1980.

Signature Philip T. Hansen Title Registered Land Surveyor Registration No. S-498
(County Surveyor, Registered Land Surveyor, or other duly authorized official)

Office of Register of Deeds, County of Oneida, I hereby certify that the within instrument was filed in this office for record on the 30th day of July, 1980 at 10:15 o'clock a M.

Loris Verage Kuehn
(Register of Deeds)

By..... Deputy

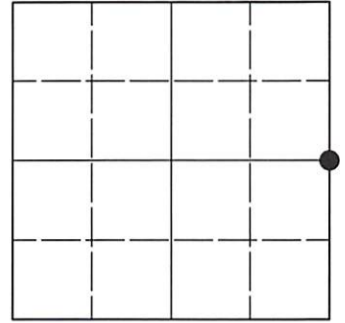
FORM 985 P. C. M. ER CO. MILWAUKEE

U.S. PUBLIC LAND SURVEY MONUMENT RECORD

Note: This form is intended and designed to fulfill all requirements of Wisconsin Administrative Code, Chapter A-E 7.08 U.S. Public Land Survey Monument Record (3)(a-i).

(a) CORNER LOCATION
 1/4 Cor. of Secs. 23 & 24
 Township 37 North
 Range 9 East of the 4th P.M.
 Town of Pine Lake
 County of Oneida

WISCRS - Oneida County
 N: 180,950.39 USft
 E: 286,111.53 USft
 Datum: NAD 83(2011) ep. 2010.00
 GNSS Method: RTN - Direct
 GNSS Control: WISCORS VRS



Sec. 23, T. 37 N., R. 9 E.

(b)(f)(g)(h) Description of monument found at this corner and if it was accepted, state all evidence (material, testimonial, occupational, plats, records, other monuments) used as a basis for accepting. If not accepted or if nothing was found, state evidence used as basis for establishing location. If re-established through lost corner proportionate methods, indicate all monuments, distances and directions used to establish. Indicate type of monument and sign post found or set.

This record is a perpetuation of the following land corner document(s):

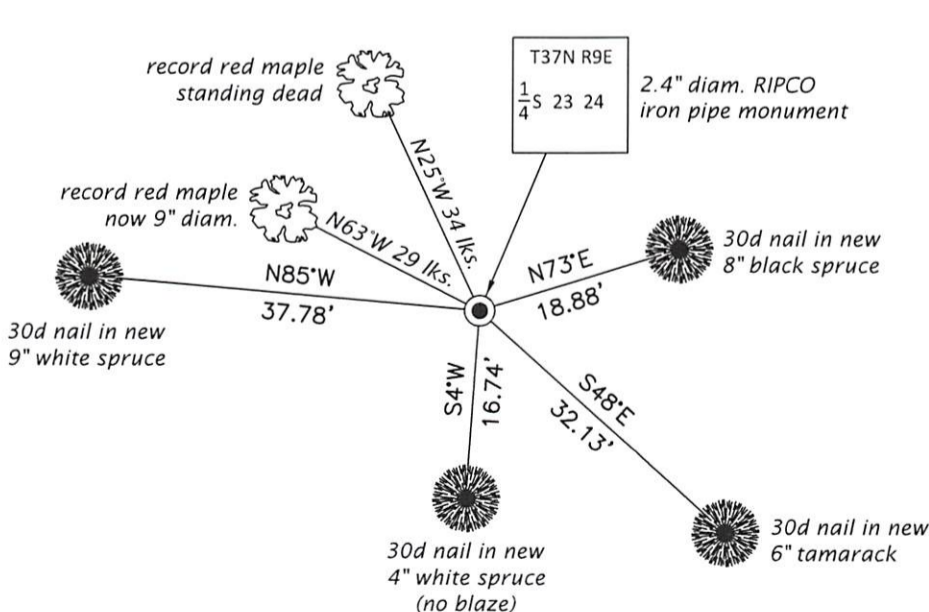
July 21, 1980: Certified Land Corner Restoration by Philip T. Hansen, filed in Oneida County

A complete history of the corner can be found on the previous land corner document(s). I accept the record activity as a true and faithful perpetuation or reestablishment of the original corner location and further perpetuate it as described below.

May 28, 2021: I found and accepted the record monument, a 2.4" diam. iron pipe, loosely set, with a 4.0" sq. RIPCO brass plate projecting 30" above a collar of stone. I found or established accessories as shown below. I set a white vinyl sign post adjacent to the monument.

The coordinate value shown has been verified by at least one of the following methods: 1) comparison to a previously GNSS determined published value; 2) the value is the average of two or more GNSS observations at a markedly different time; 3) one or more distances were measured back to the GNSS observed corner from temporary GNSS observed offset locations.

(c)(d)(e) Plan view of corner with ties to at least 4 witness monuments. If in disagreement with previously established corner, show the distances between the two corners and also indicate the ties to the disputed.



REGISTER OF DEEDS OFFICE
 ONEIDA COUNTY
 FILED

JUN 23 2021

KYLE J. FRANSON
 REGISTER OF DEEDS

(i) I, Jeffrey W. Austin, Professional Land Surveyor No. S-1885, hereby certify that the corner location on this record was determined by me or under my direction and control and that this U.S. Public Land Survey Monument Record is correct and complete to the best of my knowledge and belief.

[Handwritten Signature]

JUNE 1, 2021

Signature

Date