

U.S. PUBLIC LAND SURVEY MONUMENT RECORD

NOTE: This form is intended and designed to fulfill all requirements of Wisconsin Administrative Code, Chapter A-E 7.08 U.S. Public Land Survey Monument Record (3)(a)(b)(c)(d)(e)(f)(g)(h)(i). An additional sheet may be added if necessary to conform with said requirements.

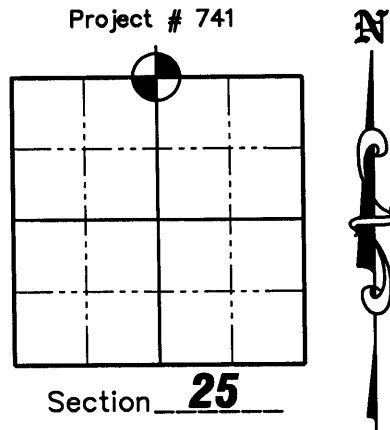
(a) Corner location: Township 37 North

Range 9 East

Town of Pine Lake

County Oneida

Project # 741



Section 25

(b)(f)(g)(h) Description of monument found at this corner and if it was accepted, state all evidence (material, testimonial, occupation, plats, records, other monuments) used as a basis for accepting. If not accepted or if nothing was found, state evidence used as a basis for establishing location. If reestablished through lost corner proportionate methods, indicate all monuments, distances and directions used to establish. Indicate type of monument found or set and sign post.

July 1859— Hiram C. Fellows went East from Northwest Section Corner 80.12 chains to Northeast Section Corner, was 18 lks. South of Corner. Corrected back 40.06 chains and set North 1/4. B.T.s: Tamarack 6", S42°E 7 lks., Tamarack 10" N13°W 37 lks.

December 22, 1899— D. H. Vaughn: Went East from Northwest Section Corner 41.15 chains to North 1/4. Fell 1.56 North of North 1/4. Found stumps of original B.T.'s and set new post in swamp.

March 1965— Drivas and crew (Ripco) found iron pipe set by Ripco and old post set by Vaughn.

February 9, 1966— Sy M. Poske, R.L.S. 140, shows North 1/4 on O.C.L.I.O. Map A-937.

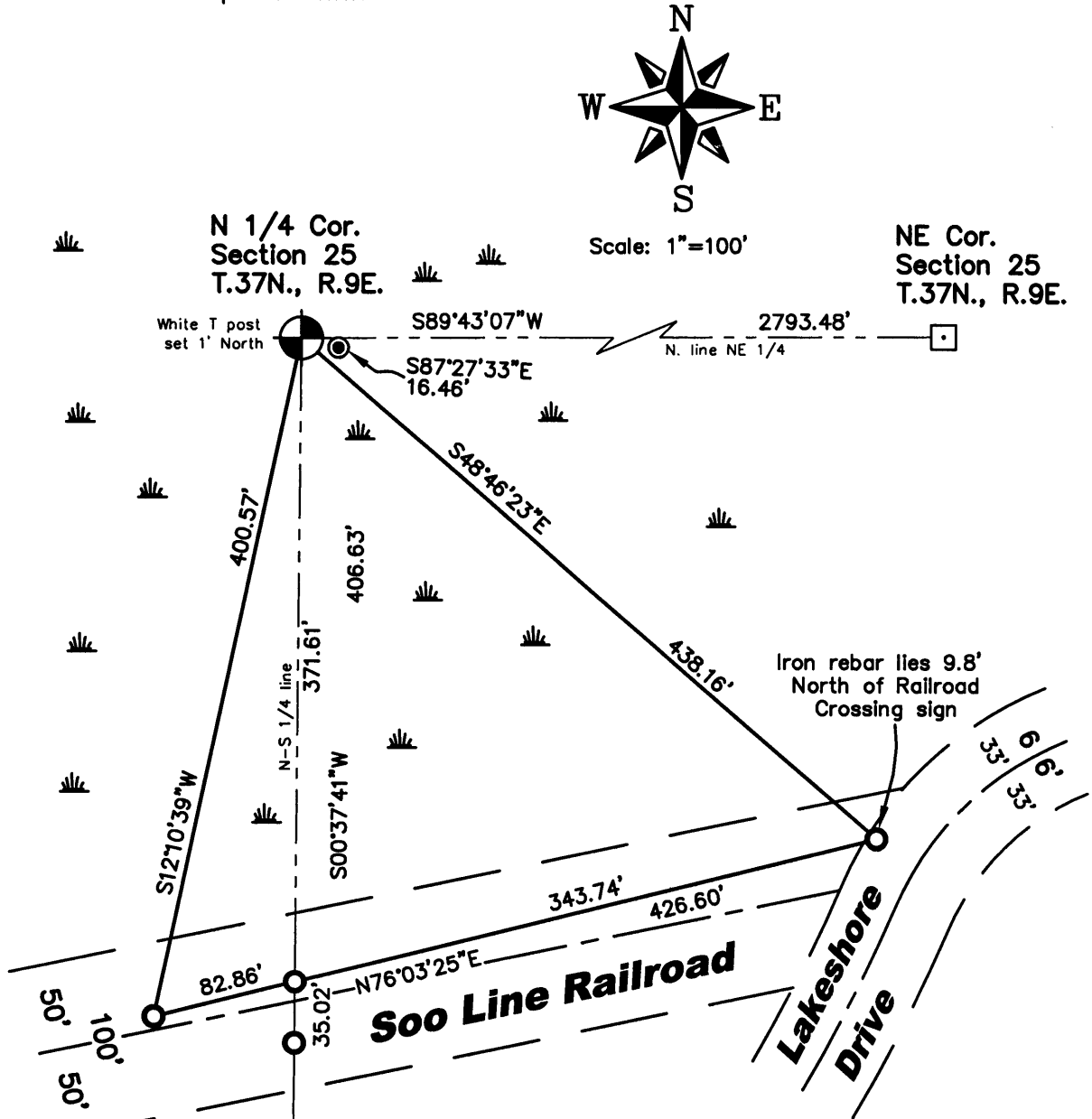
February 23, 1994— Glen Barker, R.L.S. 1682, shows North 1/4 on O.C.L.I.O. Map B-3031.

September 14, 2006— Matthew E. Hoglund, R.L.S. 1910, found and accepted a 2" iron pipe with a 4" square cap at the North 1/4. We set ties as shown on sheet 2 hereof.

R-23

U.S. PUBLIC LAND SURVEY MONUMENT RECORD

(c)(d)(e) Plan view of corner with ties to at least 4 witness monuments. If in disagreement with previously established corner, show the distances between the two corners and also indicate the ties to the disputed corner.



LEGEND

- ⊙ 1" Iron Pipe found
- 3/4" x 24" Capped Iron Rebar
Set Weighing 1.50 lbs/lin ft.
- ⊕ 2" Iron Pipe with 4" by 4" Brass Cap Found
- ◻ 3" Brass cap in 6" by 6" Concrete Monument Found
- ☙ Open swamp

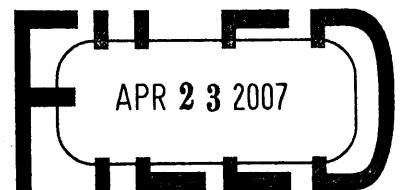
(i) I, Matthew E. Hoglund, certify that the corner location on this record was determined by me under my direction and control and that this U.S. Public Land Survey Monument is correct and complete to the best of my knowledge and belief.

Signature Matthew E. Hoglund Date 11/12/2006

Project # 741

WISCONSIN
MATTHEW E. HOGLUND
S-1910
TOMAHAWK
WI
LAND SURVEY

REGISTER OF DEEDS OFFICE
ONEIDA COUNTY, WIS.



At _____ O'Clock _____ M
THOMAS H. LEIGHTON
REGISTER OF DEEDS

Sheet 2 of 2

R-23

3709240020