

U.S. PUBLIC LAND SURVEY MONUMENT RECORD

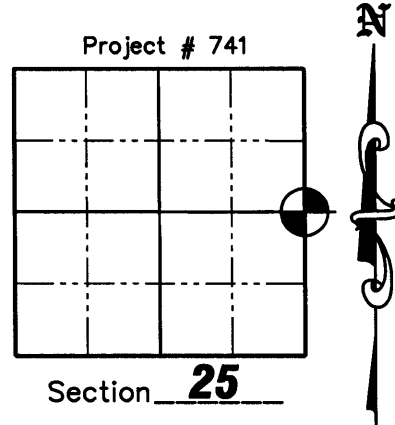
NOTE: This form is intended and designed to fulfill all requirements of Wisconsin Administrative Code, Chapter A-E 7.08 U.S. Public Land Survey Monument Record (3)(a)(b)(c)(d)(e)(f)(g)(h)(i). An additional sheet may be added if necessary to conform with said requirements.

(a) Corner location: Township 37 North

Range 9 East

Town of Pine Lake

County Oneida



(b)(f)(g)(h) Description of monument found at this corner and if it was accepted, state all evidence (material, testimonial, occupation, plats, records, other monuments) used as a basis for accepting. If not accepted or if nothing was found, state evidence used as a basis for establishing location. If reestablished through lost corner proportionate methods, indicate all monuments, distances and directions used to establish. Indicate type of monument found or set and sign post.

July 1859— Hiram C. Fellows Chained North on Range line between Sections 25 and 30, 40.00 chains and set 1/4 post. B.T.s: White Pine 8", S70°W 209 lks., no others near.

April 21, 1914— D. H. Vaughn went North from Southeast Section Corner 40.40 chains to East 1/4. Fell 185 West of East 1/4. Found trunk of North tree, marks OK, also stump of South tree, marks gone. Set post and new B.T.'s: Yellow Pine 14", N81-1/2°E 45 lks. tree is on top of big hill..

November 5, 1930— H. C. Hall ran line from Northeast 1/4 to Southeast 1/4. Found no evidence of East 1/4.

August 17, 1953— Hugh B. Crawford performed a Dependent Resurvey of the West Boundary of Section 30, T.37N., R10E. He states that the point for the 1/4 Section corner of Sections 25 and 30, at proportionate distance by using the South Meander corner point, falls in flowage; point not monumented. O.C.L.I.O. Maps B1729 and L1084.

January 8, 1963— F.R. Wincentzen shows position of East 1/4 on O.C.L.I.O. map B 3868.

August 18, 1975— Harold W. Behn R.L.S. 1221 shows a calculated position for the East 1/4 on O.C.L.I.O. map C 315; corner not set.

September 14, 2006— Matthew E. Hogleund R.L.S. 1910 found no evidence of the corner, so we reestablished corner from Plat of Survey by Harold W. Behn dated August 18, 1975, O.C.L.I.O. Map Number C-315. The corner fell in pretty wet tagalder swamp on the edge of Moen Lake and couldn't be monumented. We set a 2-1/2" Aluminum capped witness monument and a 3/4" by 24" capped iron rebar as witnesses to the one-quarter corner location. Ties set as shown on page 2 hereof.

I, Matthew E. Hogleund, certify that the corner location on this record was determined by me under my direction and control and that this U.S. Public Land Survey Monument is correct and complete to the best of my knowledge and belief.

Signature *Matthew E. Hogleund* Date 11/12/06 *M.H.*

REGISTER OF DEEDS OFFICE
ONEIDA COUNTY, WIS.

At _____ O'Clock _____ M
THOMAS H. LEIGHTON
REGISTER OF DEEDS
Sheet 1 of 2

37 09 25 2000

T-25

