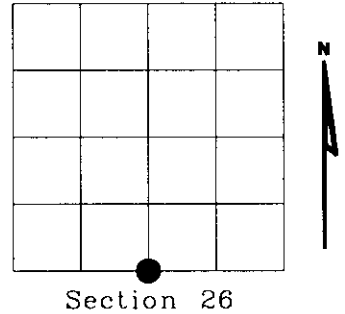


# U.S. PUBLIC LAND SURVEY MONUMENT RECORD

NOTE: This form is intended and designed to fulfill all requirements of Wisconsin Administrative Code, Chapter A-E 708 U.S. Public Land Survey Monument Record (3)(a)(b)(c)(d)(e)(f)(g)(h)(i). An additional sheet may be added if necessary to conform with said requirements

(a) Corner location: Township 37 North  
 Range 09 East  
 Town of PINE LAKE  
 ONEIDA County, Wisconsin



(b)(f)(g)(h) Description of monument found at this corner and if it was accepted, state all evidence (material, testimonial, occupational, plats, records, other monuments) used as a basis for accepting. If not accepted or if nothing was found, state evidence used as basis for establishing location. If reestablished through lost corner proportionate methods, indicate all monuments, distances and directions used to establish. Indicate type of monument found or set and sign post.

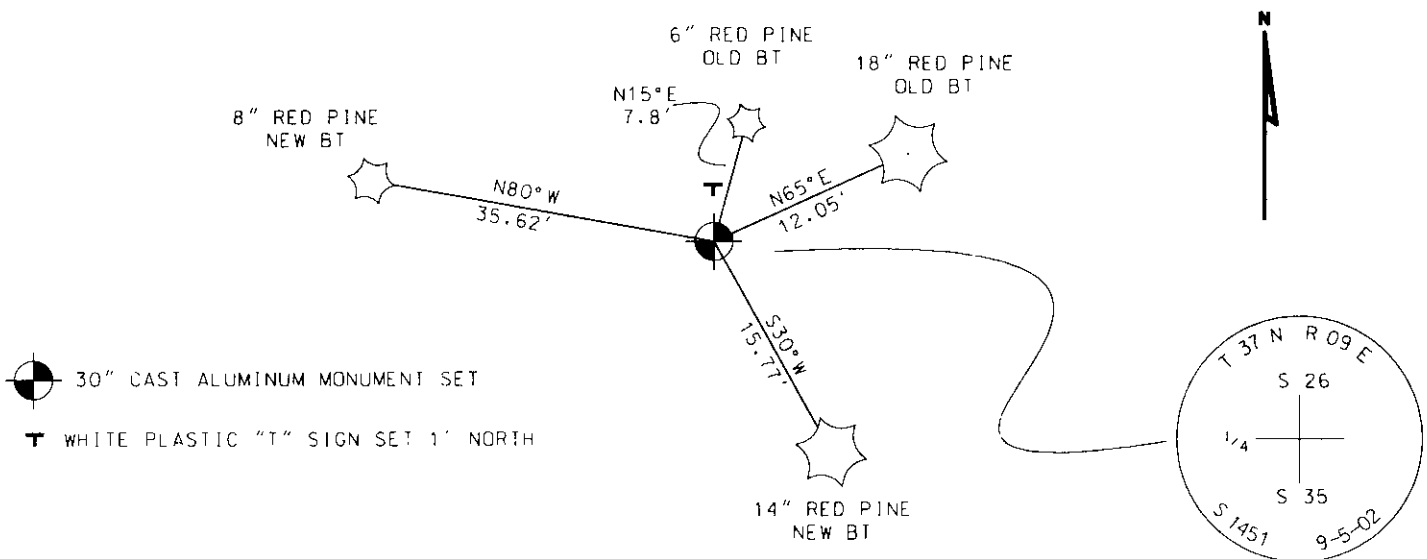
1863 - William E. Daugherty set a wood post as original corner and marked OBts.  
 OBT: Birch S17°E 12 Lks.

1903 - D.H. Vaughn found original 1/4 post, birch down but marks are plain. Set new post.  
 BTs: 12" W. Pine N42°E 52.5 Lks.  
 12" W. Pine S10°E 55 Lks.

1965 - Bill Egtvedt & Bill Suth's field notes show iron pipe or brass cap.

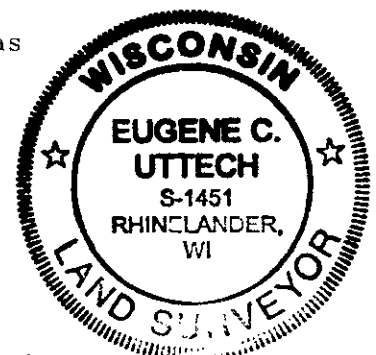
2002 - I found 2" dia. iron pipe. Replaced 2" dia. iron pipe with Oneida county 2" dia. aluminum pipe 30" long with a 3" dia. aluminum tablet stamped as shown below.  
 BTs found: 6" R. Pine N15°E 7.8' (others)  
 18" R. Pine N65°E 12.05' (others)

(c)(d)(e) Plan view of corner with ties to at least 4 witness monuments. If in disagreement with previously established corner, show the distances between the two corners and also indicate the ties to the disputed corner.



(i) I, Eugene C. Uttech, Registered Land Surveyor \*S-1451, hereby certify that the corner location on this record was determined by me or under my direction and control and that this U.S. Public Land Survey Monument Record is correct and complete to the best of my knowledge and belief.

*Eugene C. Uttech*  
 Signature  
 11-06-02  
 Date



Index No. V 19

3109260020

## US PUBLIC LAND SURVEY MONUMENT RECORD

Per Wis. Admin. Code § A-E 7.08, a U.S. public land survey monument record shall be prepared and filed with the county survey records as part of any land survey within 60 days of setting or accepting the corner, which includes or requires the perpetuation, restoration, or use of a U.S. public land survey corner and when any of the situations in Wis. Admin. Code § A-E 7.08(1)(a), (b) or (c) arise.

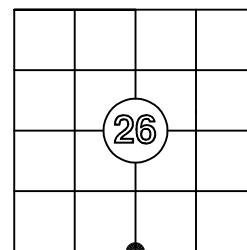
**CORNER ID:**  
**3709260020**

**3(a) Corner Identification:**

Found Oneida County aluminum monument  
South 1/4 corner  
Section 26  
Township 37 North  
Range 09 East  
4th Principal Meridian  
Town of Pine Lake  
Oneida Co., WI

Observed Coordinates:

N: 172656.91  
E: 283312.54  
Datum: NAD83 (2011)  
GNSS Control: WISCRS Network  
GNSS Method: RTK-Direct  
Verification Method: 2



The coordinate value has been verified by at least one of the following methods: 1) comparison to a previously GNSS determined published value; 2) The value is the average of two or more GNSS observations at markedly different times; 3) one or more distances were measured to the corner from temporary GNSS observed offset locations.

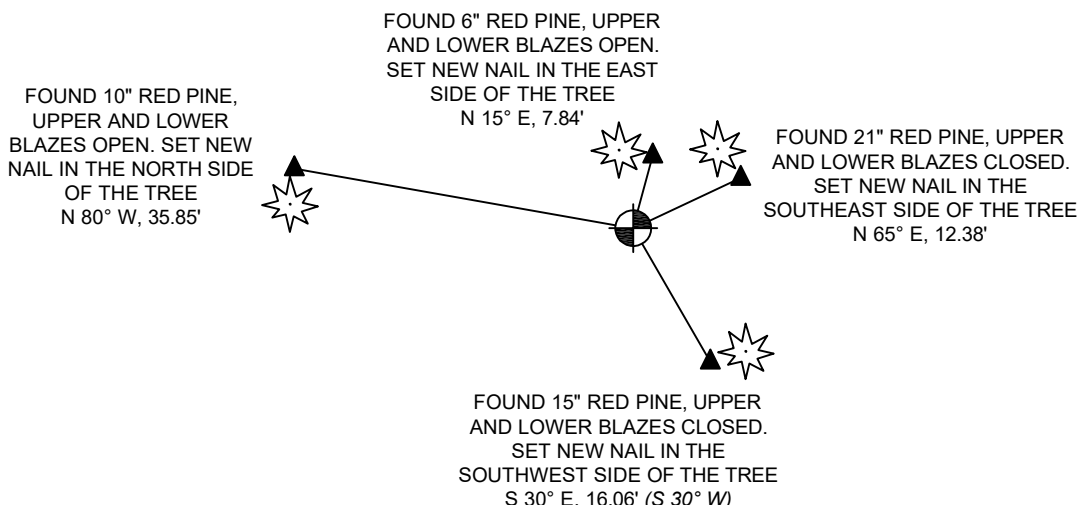
**History of Original Corner Establishment**

Corner Set: Wood Post  
Original Surveyor: Wm. Daugherty  
Date of Survey: August, 1863  
Birch, 12" N 34° E, 17 links  
Aspen, 10" S 6° E, 10 links

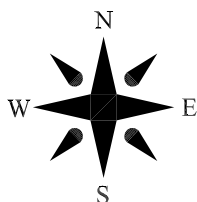
**3(b)((c)(d)(f)(g)(h))**

This is a continuation of a previous USPLSS Monument Record by Surveyor Gene Uttech (2002). See previous record for additional history on this corner.

- 11/06/2002 - Gene Uttech, S-1451, found a 2" iron pipe and replaced it with an Oneida County aluminum monument.
- 2/25/2008 - Russ Brown, S-2148, finds and Oneida County aluminum monument.
- 5/14/2014 - Jeff DeMuth, S-2656, finds an Oneida County aluminum monument.
- 12/2/2025 - I, Anthony Jones, S-2508, found an Oneida County aluminum monument as set and described by Gene Uttech, in good condition. I found all four witness trees in good condition. Since he did not state that he set nails, I am assuming his distances are to the blazes in the face of the trees. I added a new nail to each tree, expecting that the blazes will eventually grow over. The 2" iron pipe is lying next to the monument.



Bearings: Grid  
Scale: 1"=20'



**3(i)**

I, Anthony R. Jones, Wisconsin Professional Land Surveyor No S-2508, hereby certify that the corner location shown on this record was determined by me, or under my direction or control, and that this U.S. Public Land Survey Monument Record is correct and complete to the best of my knowledge and belief.

