

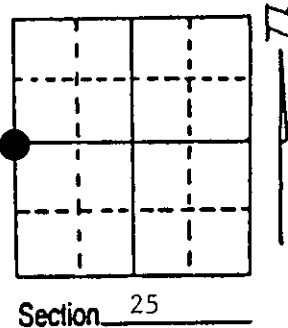
# U.S. PUBLIC LAND SURVEY MONUMENT RECORD

**Note:** This form is intended and designed to fulfill all requirements of Wisconsin Administrative Code, Chapter A-E 7.08 U.S. Public Land Survey Monument Record (3) (a) (b) (c) (d) (e) (f) (g) (h) (i). An additional sheet may be added if necessary to conform with said requirements.

(a) Corner location: Township 37 North  
 Range 9 East/West

Town/City/Village Pine Lake

County Oneida



(b) (f) (g) (h) Description of monument found at this corner and if it was accepted, state all evidence (material, testimonial, occupational, plats, records, other monuments) used as a basis for accepting. If not accepted or if nothing was found, state evidence used as basis for establishing location. If reestablished through lost corner proportionate methods, indicate all monuments, distances and directions used to establish. Indicate type of monument found or set and sign post.

1863 - William Daugherty established this corner and set a wood post with BTs:  
 10" Y. Pine, S60°E, 15 Links                      10" W. Pine, N20°W, 19 Links

4/5/1989 - Milo E. Stefan found Ripco cap, a 4" x 4" brass cap on 1 1/4" iron pipe, supported by Red Pine Stump, S60°E, 9.9'. White Pine falls in woods road. Ripco BT, 10" Tamarack, N64°W, 56.75'.

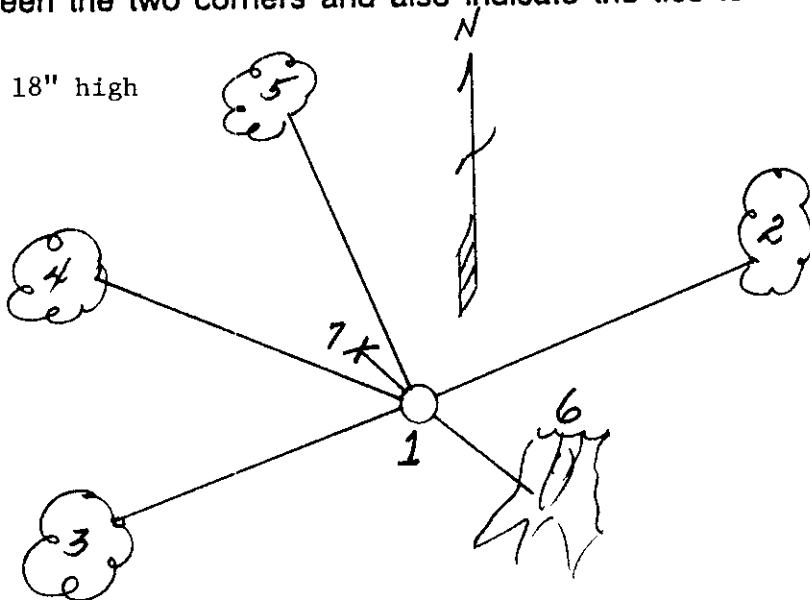
I accept this corner as the perpetuated original corner position and make new BTs and set plastic sign post.

10/10/1936 - Maine found remains of both original BT's and set a new tamarack stake with two new references:  
 12" yellow pine stump, N81°E, 68 1/2 links                      6" White Pine stump, S16°E, 31 1/2 links

(c) (d) (e) Plan view of corner with ties to at least 4 witness monuments. If in disagreement with previously established corner, show the distances between the two corners and also indicate the ties to the disputed corner.

- 1) 4" x 4" brass cap on 1 1/2" iron pipe 18" high
- 2) 7" White Birch, N75°E, 33.62'
- 3) 7" Black Spruce, S78°W, 78.43'
- 4) 10" Tamarack, N64°W, 56.75'
- 5) 6" Tamarack, N10°W, 49.76'
- 6) Red Pine Stump, S60°E, 9.9'
- 7) Plastic sign post, NW, 2.0'

Distances to nail in side of BTs.  
 BTs scribed "BT" in stump blaze.



(i) I, Milo E. Stefan  
 (type or print name) certify that the corner location on this record was determined by me or under my direction and control and that this U.S. Public Land Survey Monument Record is correct and complete to the best of my knowledge and belief.

Milo E. Stefan  
 Signature

8/5/89  
 Date



Index No. T-21

3709262000

# U.S. PUBLIC LAND SURVEY MONUMENT RECORD

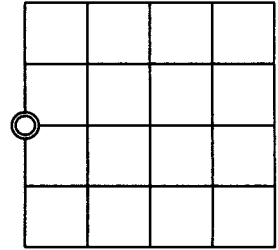
Note: This form is intended and designed to fulfill all requirements of Wisconsin Administrative Code, Chapter A-E 7.08 U.S. Public Land Survey Monument Record (3)(a)(b)(c)(d)(e)(f)(g)(h)(i). An additional sheet may be added to if necessary to conform with said requirements.

(a) Corner Location: West 1/4 Section 25  
 Township 37 North  
 Range 9 East  
 Town of Pine Lake  
 Oneida County, Wisconsin

REGISTER OF DEEDS OFFICE  
 ONEIDA COUNTY  
 FILED

JUL 24 2017

AT \_\_\_\_\_ O'CLOCK \_\_\_\_\_ M  
 KYLE J. FRANSON  
 REGISTER OF DEEDS



Section 25

(b)(f)(g)(h) Description of monument found at this corner and if it was accepted, state all evidence (material, testimonial, occupational, plats, records, other monuments) used as a basis for accepting. If not accepted or if nothing was found, state evidence used as basis for establishing location. If reestablishment through lost corner proportionate methods, indicate all monuments, distances and directions used to establish. Indicate type of monument found or set and sign post.

August 1863 - William Daugherty set quarter section post.

- 10" Yellow Pine, S60°E, 15 links
- 10" White Pine, N20°W, 19 links

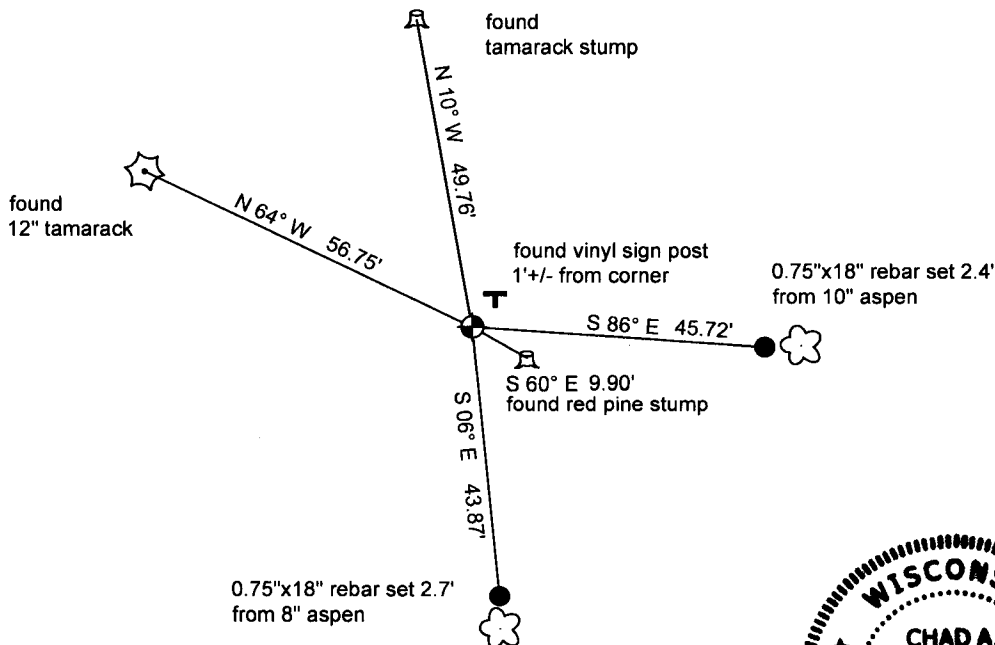
10/10/1936 - Maine found remains of both original BT's and set a new tamarack stake with two new references: 12" yellow pine stump, N81°E, 68 ¼ links 6" white pine stump, S16°E, 31 ½ links.

4/5/1989 - Milo E. Stefan reports:

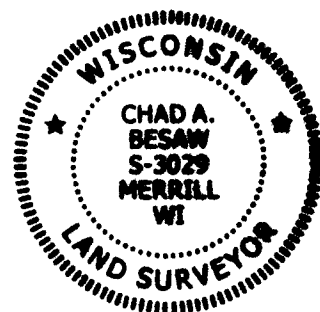
"Found Ripco cap, a 4"x4" brass cap on 1.25" iron pipe, supported by red pine stump, S60°E, 9.9'. White pine falls in woods road. Ripco BT, 10" tamarack, N64°W, 56.75'. I accepted this corner as the perpetuated original corner position and make new BT's and set plastic sign post."

6/30/2017 - Chad A. Besaw found "Ripco Monumnet", a 4"x4" brass capped 1.25" iron pipe up 18 inches, and in good condition. 3 ties remain, set 2 additional ties as shown below:

(c)(d)(e) Plan view of corner with ties to at least 4 witness monuments. If in disagreement with previously established corner, show the distances between the two corners and also indicate the ties to the disputed corner.



scale: 1" = 30'



(i) I, Chad A. Besaw, Professional Land Surveyor #S-3029, hereby certify that the corner location on this record was determined by me or under my direction and control and that this U.S. Public Land Survey Monument Record is correct and complete to the best of my knowledge and belief.

*Chad A. Besaw*  
 Signature

7-14-2017  
 Date

Index No. T 21 370924 2000