

CERTIFIED LAND CORNER RESTORATION

Index No. V-17

3709270000

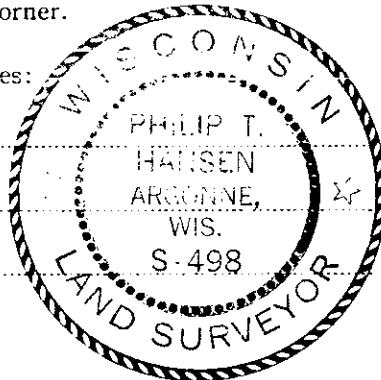
State of Wisconsin }  
County of Oneida } ss.

I, Philip T. Hansen, do hereby certify that on the 17th day of February, 1977, I found evidence of the Section corner of Section 26, 27, 34, 35 Township 37, North, Range 9 East, Fourth Principal Meridian, as described hereon; and that from this evidence I established a new monument and accessories as described hereon to perpetuate the original location of this corner.

Resident witnesses:

Jim Claflin

Herb Wagoner



History of original corner establishment:

Original Corner established by Wm. E. Dougherty, Deputy Surveyor, in 1863, from which Aspen 10" bears N 8° W 20 links and Aspen 8" bears S 33° E 12 links. Corner re-established by N. Loftus, Ripco Surveyor, in 1961. From recovered E<sup>1</sup>/<sub>2</sub> corner, Section 27, ran a random line South 178° 43' 15" mag. 21.81 links, closed out 2.9 links west of S 1/16. Recovered old corner and BTs. Continued line South, same bearing and at 43.62 chains set Section Corner 26, 27, 34 and 35, 5.8 links east. Set 1" iron pipe and marked NBT - Birch 5" N 73° W 98 links and NBO 2" x 4" x 18" rock, N 2° W 55.6 links. Correct bearing S1° 21' 20"E

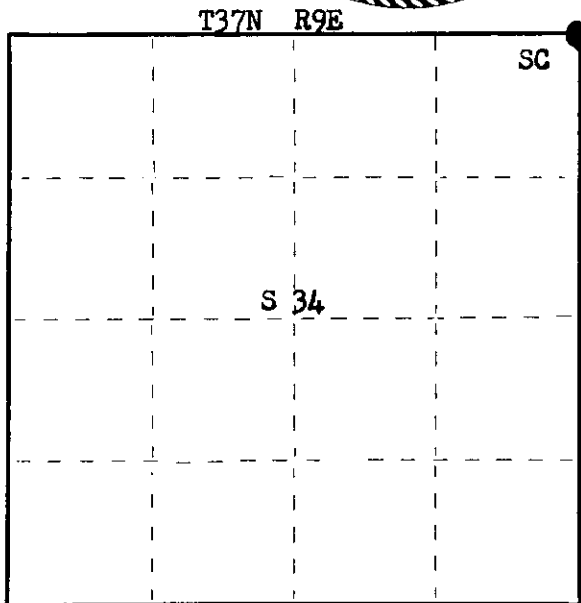
Description of corner evidence found:

Recovered 1 1/2" iron pipe with alloy cap, stamped:  
Monument recovered in excellent condition. Also 1" iron pipe driven in ground beside it.  
Recovered OBT - White Birch 5" N 73° W 98.0 links, scribing partly visible (stump).  
OBO - 2" x 4" x 18" rock N 2° W 55.6 links.

T37N R9E  
27 | 26  
34 | 35  
RIPCO

Description of monument and accessories I established to perpetuate the original location of this corner.

As monument was recovered in excellent condition, it was left in place.  
NETs - White Birch 6" N 50° W 61.0 links, scribed SC BT.  
White Birch 6" N 75° E 47.0 links, scribed SC BT.  
Oak 6" S 25° W 33.5 links, scribed SC BT.



○ = Corner monument restored.

Dated at Rhineland, Wis., this 21st day of March, 1977.

Signature Philip T. Hansen Title Registered Land Surveyor Registration No. S-498  
(County Surveyor, Registered Land Surveyor, or other duly authorized official)

Office of Register of Deeds, County of Oneida, I hereby certify that the within instrument was filed in this office for record on the 1st day of April, 1977 at 1:00 o'clock P. M.

Darwin George Kuehn  
(Register of Deeds)

By.....Deputy

FORM 985 M. C. MILLER CO., MILWAUKEE

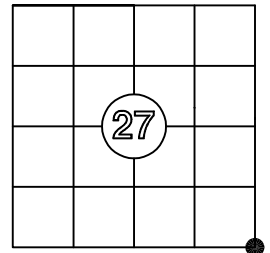
## US PUBLIC LAND SURVEY MONUMENT RECORD

Per Wis. Admin. Code § A-E 7.08, a U.S. public land survey monument record shall be prepared and filed with the county survey records as part of any land survey within 60 days of setting or accepting the corner, which includes or requires the perpetuation, restoration, or use of a U.S. public land survey corner and when any of the situations in Wis. Admin. Code § A-E 7.08(1)(a), (b) or (c) arise.

**3(a) Corner Identification:**

Found 1 1/2" iron pipe with aluminum cap  
Southeast Corner  
Section 27  
Township 37 North  
Range 9 East  
4th Principal Meridian  
Town of Pine Lake  
Oneida Co., WI

Observed Coordinates:  
N: 172758.40  
E: 280454.80  
Datum: WISCRS  
GNSS Control: WISCRS NETWORK  
GNSS Method: RTK-Direct  
Verification Method: 2



**CORNER ID:  
3709270000**

**History of Original Corner Establishment**

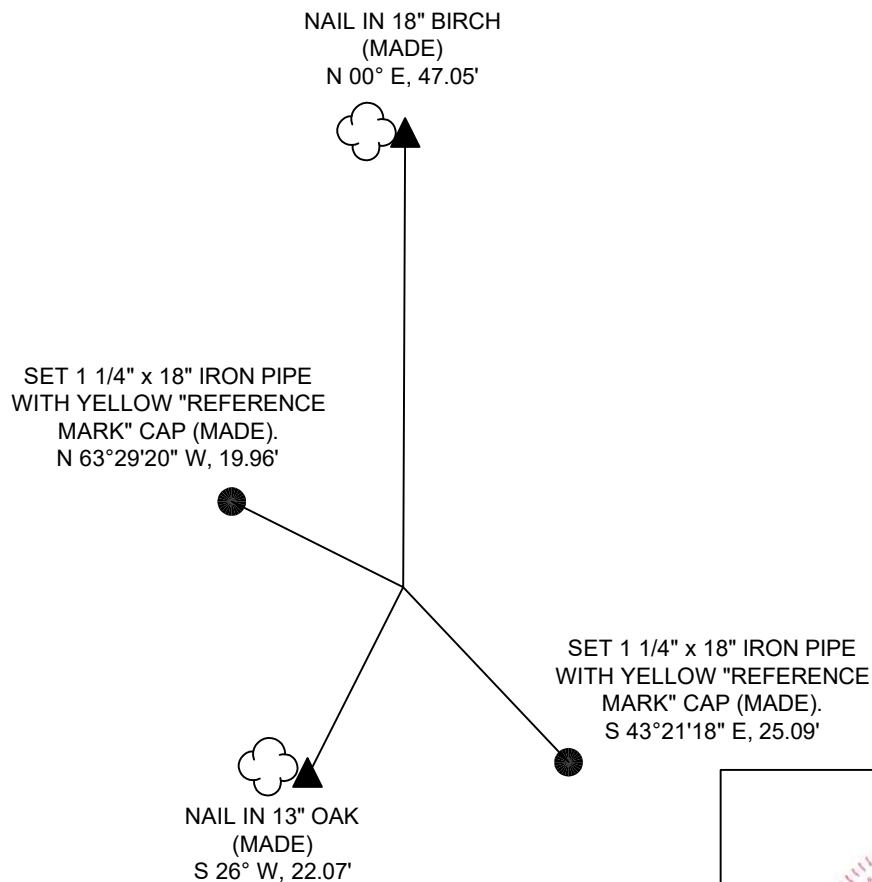
Corner Set: Wood Post  
Original Surveyor: Wm. Daugherty  
Date of Survey: August, 1863  
Aspen, 15" N 8° W, 20 links  
Aspen, 8" S 33° E, 12 links

The coordinate value has been verified by at least one of the following methods: 1) comparison to a previously GNSS determined published value; 2) The value is the average of two or more GNSS observations at markedly different times; 3) one or more distances were measured to the corner from temporary GNSS observed offset locations.

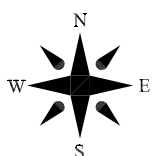
**3(b)((c)(d)(f)(g)(h)**

This is a continuation of a previous USPLSS Monument Record by Surveyor Philip Hansen (1977). See previous record for additional history on this corner.

- 3/21/1977 - Philip Hansen, S-498, finds a 1 1/2" iron pipe with an alloy cap, set by Ripco surveyors in 1961, stamped to indicate location.
- 11/1/2025 - I, Anthony Jones, S-2508, found the 1 1/2" iron pipe with an alloy cap, stamped to identify the location, 2' above grade, in good condition. The Ripco witness tree is gone. I did find the 2"x4"x18" rock, but there is no scribe marks or any indication where the record distance of 55.6 links is measured to. The two birch trees by Hansen are also gone. I found Hansen's oak in good condition and set a new nail in the side. The scribe is closed over. I made three new witnesses, as shown below.



Bearings: Grid  
Scale: 1"=20'



**3(i)**

I, Anthony R. Jones, Wisconsin Professional Land Surveyor No S-2508, hereby certify that the corner location shown on this record was determined by me, or under my direction or control, and that this U.S. Public Land Survey Monument Record is correct and complete to the best of my knowledge and belief.

