

U.S. PUBLIC LAND SURVEY MONUMENT RECORD

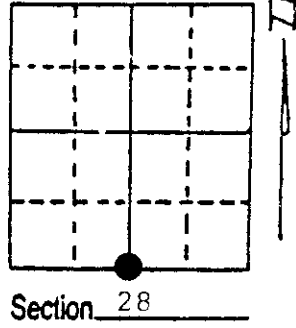
Note: This form is intended and designed to fulfill all requirements of Wisconsin Administrative Code, Chapter A-E 7.08 U.S. Public Land Survey Monument Record (3) (a) (b) (c) (d) (e) (f) (g) (h) (i). An additional sheet may be added if necessary to conform with said requirements.

(a) Corner location: Township 37 North

Range 9 East

Town/City/Village Pine Lake

County Oneida



(b) (f) (g) (h) Description of monument found at this corner and if it was accepted, state all evidence (material, testimonial, occupational, plats, records, other monuments) used as a basis for accepting. If not accepted or if nothing was found, state evidence used as basis for establishing location. If reestablished through lost corner proportionate methods, indicate all monuments, distances and directions used to establish. Indicate type of monument found or set and sign post.

- 1863 W.E. Daugherty 40.06 ch set 1/4 Post Y. Pine 18 N 32 E 20 lks, W. Pine 18 N 32 W 20 lks.
- 1891 Dorr at corner.
- 1900 Vaughan at corner.
- 1970 McKnown found corner set by others.
- 1980 T. Loftus found 2" iron pipe 15" Scotch Pine N 36 E 82.60; 16" Scotch Pine N 89 E 2.30', old 2" iron pipe N 15 E 5.60.
- 1988 W.E. Bandow found iron pipe and Loftus BT's in place of 2" iron pipe set Oneida County aluminum monument stamped to identify corner with white plastic survey marker Post 1' South, corner referenced as shown below:

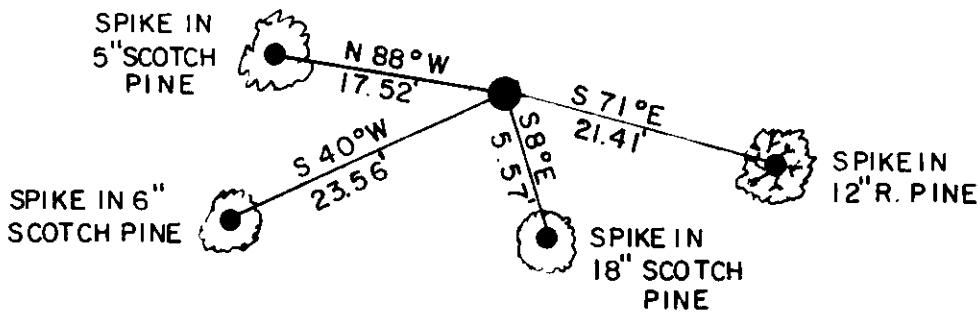
(c) (d) (e) Plan view of corner with ties to at least 4 witness monuments. If in disagreement with previously established corner, show the distances between the two corners and also indicate the ties to the disputed corner.

NOTE:

ALL MEASUREMENTS
TAKEN FROM A 6"
SPIKE IN SIDE OF TREES

BEARINGS TAKEN WITH
HANDHELD MAGNETIC
COMPASS

NO SCALE



(i) I, William E. Bandow

(type or print name) certify that the corner location on this record was determined by me or under my direction and control and that this U.S. Public Land Survey Monument Record is correct and complete to the best of my knowledge and belief.

William E. Bandow
Signature

12-29-89
Date



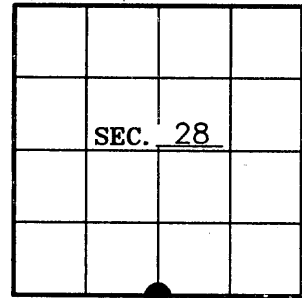
Index No. Y-11

3709280020

U. S. PUBLIC LAND SURVEY MONUMENT RECORD

Note: This form is intended and designed to fulfill all requirements of Wisconsin Administrative Code-Chapter A-E 7.08 U. S. Public Land Survey Monument Record (3)(a)(b)(c)(d)(e)(f)(g)(h)(i). An additional sheet may be added if necessary to conform with said requirements.

(a) CORNER LOCATION: Oneida County Coordinates
S1/4 corner of Sec. 28 N 172145.2400
 Township 37 North E 273167.4665
 Range 9 East Oneida Co. Coord's.
 Town Pine Lake Datum Base 83/91
 County of Oneida



(b) HISTORY OF ORIGINAL CORNER ESTABLISHMENT:
 Original Surveyor: Wm. E. Daugherty Original B.T.'S
 Date of Survey: Commenced Aug. 1863 18" Yellow Pine, N32°E, 20 lks.
 Completed 1863 18" White Pine, N32°W, 20 lks.

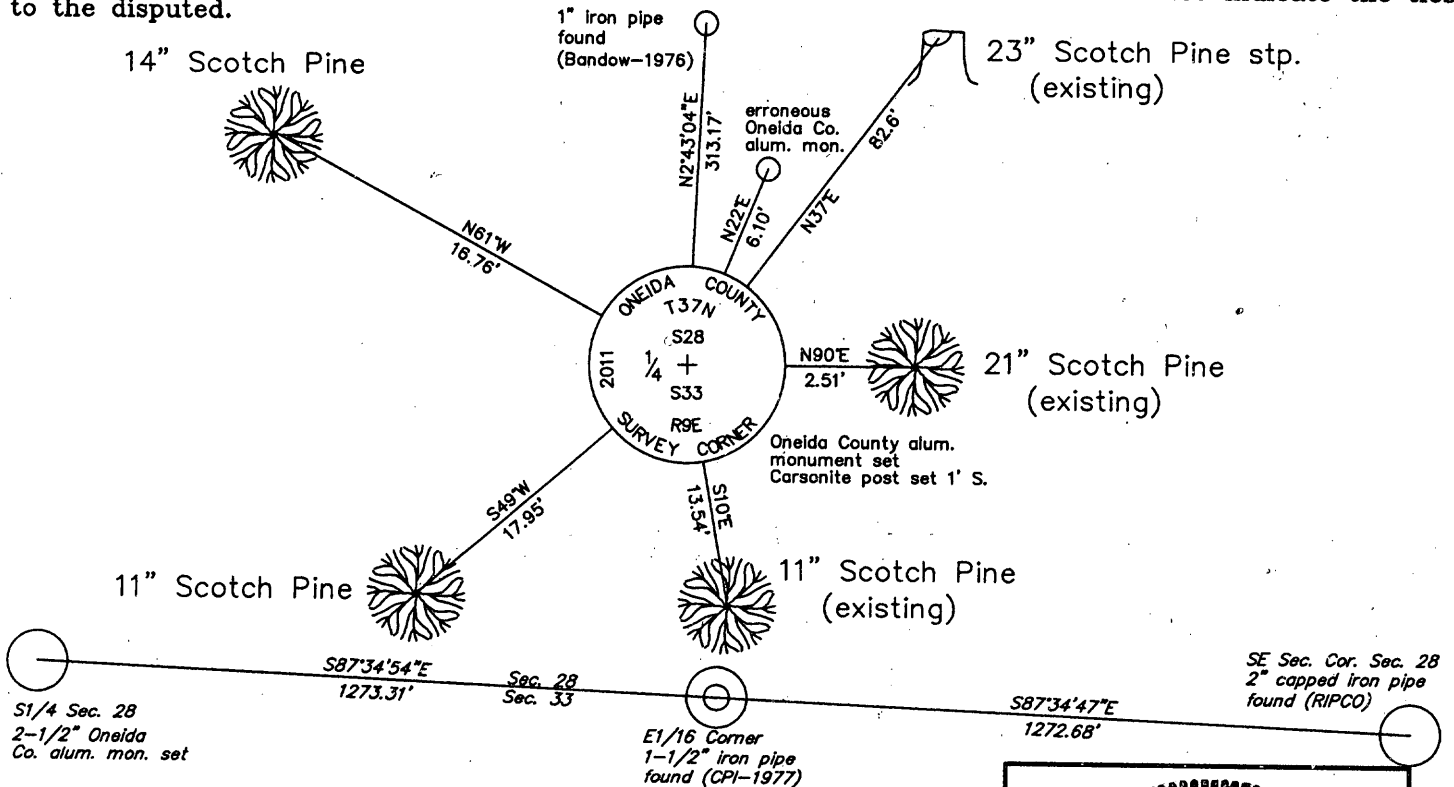
(b)(f)(g)(h) Description of monument found at this corner and if it was accepted—state all evidence (material—testimonial—occupation—plats—records—other monuments) used as a basis for accepting. If not accepted or if nothing was found state evidence used as basis for establishing location. If reestablished through lost corner proportionate methods indicate all monuments—distances and directions used to establish. Indicate type of monument and sign post found or set.

REGISTER OF DEEDS OFFICE
 ONEIDA COUNTY
FILED
 FEB 13 2012

SEE SHEET 2

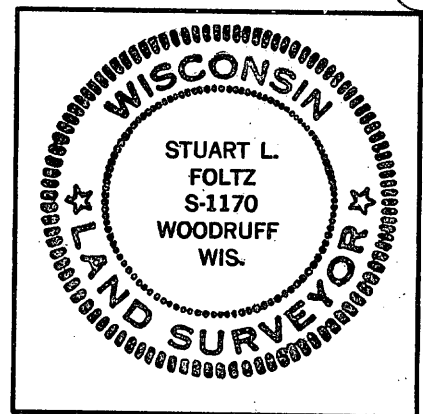
AT O'CLOCK M
THOMAS H. LEIGHTON
 REGISTER OF DEEDS

(c)(d)(e) Plan view of corner with ties to at least 4 witness monuments. If in disagreement with previously established corner—show the distances between the two corners and also indicate the ties to the disputed.



(i) I Stuart L. Foltz S-1170
 hereby certify that the corner location on this record was determined by me or under my direction and control and that this U.S. Public Land Survey Monument Record is correct and complete to the best of my knowledge and belief.

Stuart L. Foltz 1/24/2012
 Signature Foltz and Associates, Inc. Date

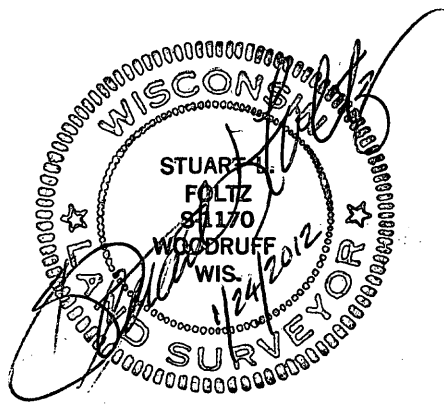


INDEX NO. V-11

U. S. PUBLIC LAND SURVEY MONUMENT RECORD

Note: This form is intended and designed to fulfill all requirements of Wisconsin Administrative Code-Chapter A-E 7.08 U. S. Public Land Survey Monument Record (3)(a)(b)(c)(d)(e)(f)(g)(h)(i). An additional sheet may be added if necessary to conform with said requirements.

- 1863 - Wm. E. Daugherty, Deputy Surveyor, set 1/4 Section post.
- 1976 - William E. Bandow surveys the SW-SE, Sec. 28 - see Oneida Co. Surveyor's Map #C1267. He shows a found iron pipe at the S1/4 location. He also shows the South 1/16 Southeast half-way and on line with the SE Sec. Corner. He also shows an iron pipe set N2°04'47"W, 313.30' from the S1/4.
- 1979 - William E. Bandow shows a found iron pipe at the S1/4 location (O.C.S.M. #B1161).
- 1980 - Todd Loftus performs a survey in the SE1/4 of Sec. 28 (O.C.S.M. #B2327). He shows a 2" iron pipe found at the S1/4 location with two BT's: new 15" Scotch Pine, N36°E, 82.60'; new 16" Scotch Pine, N89°E, 2.30'. He also shows an old 2" I.P. N15°E, 5.60'. His survey also shows the E1/16 corner to be monumented with a 1" capped I.P. set by C.P.I. on line with the SE Sec. Corner and 0.10' W. of half-way.
- 1984 - William Immich shows a 2" iron pipe found at the S1/4 location (O.C.S.M. #B216).
- 1988 - William E. Bandow files a U.S. Public Land Survey Monument Record for the S1/4 Cor. The record indicates he replaced the 2" I.P. used by Loftus with an Oneida County aluminum monument and shows the following BT's.: 18" Scotch Pine, N35°E, 82.88'; 18" Scotch Pine, S90°E, 2.51'; 9" Scotch Pine, S10°E, 13.54' and 5" Scotch Pine, S29°E, 18.60'.
- 1989 - William E. Bandow files a U.S. Public Land Survey Monument Record for the S1/4 Cor. The 1988 record is marked "Void See Next Sheet" This record indicates he replaced the 2" I.P. used by Loftus with an Oneida County aluminum monument and shows the following BT's.: 12" Red Pine, S71°E, 21.41'; 18" Scotch Pine, S8°E, 5.57'; 6" Scotch Pine, S40°W, 23.56' and 5" Scotch Pine, N88°W, 17.52'.
- 1992 - William E. Bandow shows monument found at the S1/4 Cor. location (O.C.S.M. #C942 and #C943).
- 1999 - William E. Bandow shows an Oneida County Monument found at the S1/4 Cor. location (O.C.S.M. #C1264).
- 2000 - Devon Vanden Heuvel shows a 2" iron pipe at the S1/4 location (CSM #2418). He also shows the E1/16 Corner 0.02' S. and 0.65' W. of the mid-way point to the SE Section Corner.
- 2001 - Russell F. Brown shows an Oneida County Monument found (O.C.S.M. #B4904).
- 2011 - Stuart L. Foltz, while performing a survey in the SW1/4 of the SE1/4, Sec. 28, recovered an Oneida County aluminum monument, but distance to Bandow's I.P. to north was about 5.9' short. We tied the E1/16 Corner and SE Section corner of Sec. 28. This confirmed that the Oneida County aluminum monument found was about 6' too far to the north. We recovered the BT's. shown on the U.S.P.L.S. monument record by William E. Bandow dated 11/3/88 and set a new Oneida County aluminum monument from said BT's. Erroneous Oneida County aluminum monument found originally is N22°E, 6.10' from new Oneida County aluminum monument set.



INDEX NO. V-11