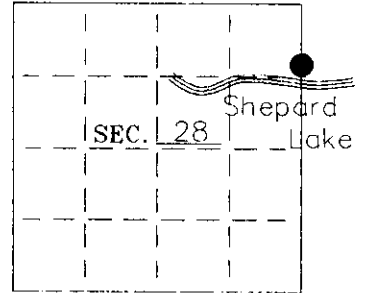


U. S. PUBLIC LAND SURVEY MONUMENT RECORD

Note: This form is intended and designed to fulfill all requirements of Wisconsin Administrative Code—Chapter A-E 7.08 U. S. Public Land Survey Monument Record (3)(a)(b)(c)(d)(e)(f)(g)(h)(i). An additional sheet may be added if necessary to conform with said requirements.

(a) CORNER LOCATION: State Plane Coordinates
 Witness
 Meander corner of Sec. 28. X _____
 Township 37 North Y _____
 Range 9 East Datum Base _____
 Town Pine Lake County of Oneida



(b) HISTORY OF ORIGINAL CORNER ESTABLISHMENT:

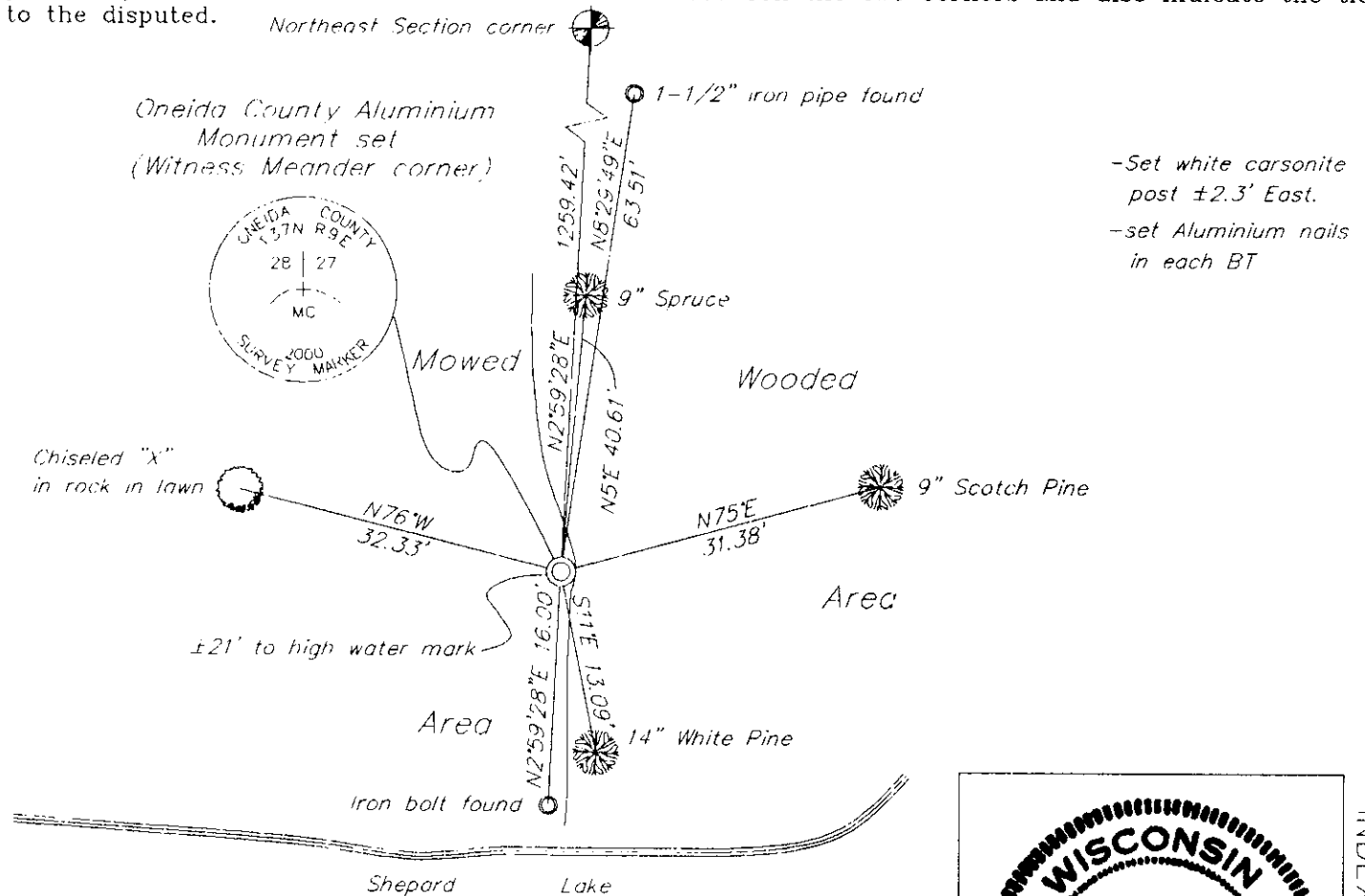
Original Surveyor: W. Daugherty Original B.T.'S
 Date of Survey: Commenced 1863 12" Y. Pine N31°E. 9 lks
 Completed 1863 12" W. Pine N38°W. 9 lks

(b)(f)(g)(h) Description of monument found at this corner and if it was accepted—state all evidence (material—testimonial—occupation—plats—records—other monuments) used as a basis for accepting. If not accepted or if nothing was found state evidence used as basis for establishing location. If reestablished through lost corner proportionate methods indicate all monuments—distances and directions used to establish. Indicate type of monument and sign post found or set.

1947— A.J. Lytle's notes state he "went to M.C. on east Sect. line on North shore of Shepard Lake, found iron bolt, made new bearing; BT: N. Pine 14" N79°45'E, 45 lks (29.7').

2000— I found an iron bolt on the north shore of Shepard Lake, 5' from water. I found a blazed Red Pine N83°E, 30'. I set an Oneida County Aluminium Monument 16.00' from the iron bolt found, as a witness, on the section line. I also found a 1-1/2" iron pipe that bears N8°29'49"E, 63.51' from the witness corner, which was believed to be the meander corner on Oneida County map #1.1682 doted 9/3/99. See sketch below.

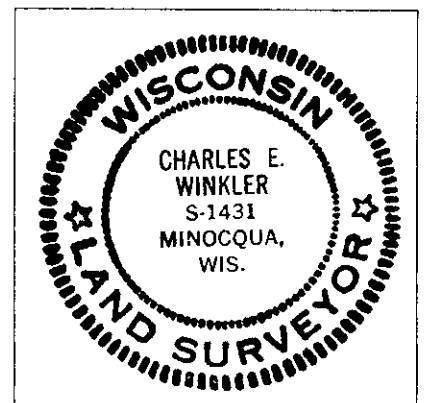
(c)(d)(e) Plan view of corner with ties to at least 4 witness monuments. If in disagreement with previously established corner—show the distances between the two corners and also indicate the ties to the disputed.



-Set white carsonite post ±2.3' East.
 -set Aluminium nails in each BT

(i) I Charles E. Winkler S-1431 hereby certify that the corner location on this record was determined by me or under my direction and control and that this U.S. Public Land Survey Monument Record is correct and complete to the best of my knowledge and belief.

Charles E. Winkler 8/8/2001
 Signature Foltz and Associates, Inc. Date



INDEX NO. P.S.—13