

At _____ O'Clock _____ M
THOMAS H. LEIGHTON
REGISTER OF DEEDS

This form is intended to fulfill the requirements of Chapter A-E7.08 (3)(a) thru (i) U.S. Public Land Survey Monument Location Record, Wisconsin Administrative Code. Use the reverse side of form for continuation.

U.S. PUBLIC LAND SURVEY MONUMENT LOCATION RECORD

Recorders Data

USPLS CORNER: WEST 1/4 SECTION: 29 TOWNSHIP: 37 NORTH RANGE: 9 EAST
NAME OF WATERWAY FOR M.C. CORNER: N/A SECTION LINE: N/A
~~(CITY)(VILLAGE)(TOWN)~~ OF: PINE LAKE COUNTY OF: ONEIDA

Description of monument found or placed and all other evidence used as the basis for monument location; including monuments and measurements required if the corner location was reestablished by lost corner proportionate methods. Also indicate name of the original surveyor, original survey date and the corner monument, bearing trees, witness or other reference monuments established, including measured bearing and distance ties, from available survey records.

In August 1863, William E. Daugherty/GLO set a wood post as original corner and noted an OBT: an 8" Tamarack N32°E 9 links; all now obliterated.

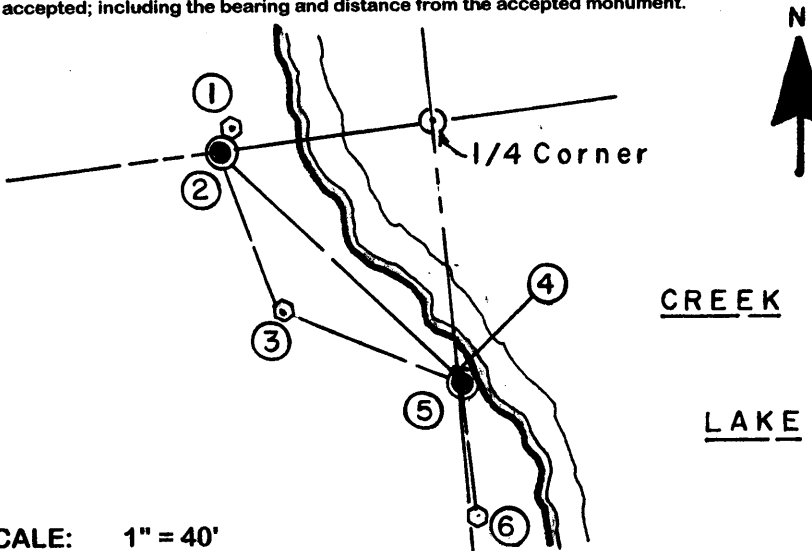
In June 1948, Surveyor Walter V. Gafke notes a wood post at this corner in water (of Creek Lake), an iron pipe S88°27'W 70.8' and an iron pipe S0°03'E 176.7' per legend on Plat of Forest Point filed in Oneida County records; I did not locate either iron pipe.

In January 1998, Russell F. Brown/RLS 2148, notes this corner in water (of Creek Lake), a 1" iron pipe S05°54'42"E 55.00' and a 1" iron pipe S81°59'44"W 45.12' per his Plat of Survey B-3853 filed in Oneida County survey records.

In April 2000, Stuart Foltz/RLS 1170 notes this corner in Creek Lake and a 3/4" iron pipe S0°00'00"W 193.62' per County Plat of Red Pines Estates filed in Oneida County records. I did not look for iron pipe.

On June 12, 2006 I found a 1" dia. iron pipe with uncapped top 5.5" above grade West of corner in lake and a 1" iron pipe with uncapped top 5" above grade South of corner in lake per Plat of Survey B-3853 and I drove a standard 2" dia. x 30" long aluminum monument with stamped Oneida County cap over each iron pipe to 7"+/- above grade as witness monuments to the corner in lake by record bearing and distance and measured new ties for both.

Plan view map of monument location with bearing and distance ties to a minimum of four(4) described witness or reference monuments of concrete, natural stone, iron, live bearing trees or equivalent material. If applicable, also show a minimum of two(2) bearing and distance ties to any other monument found and not accepted; including the bearing and distance from the accepted monument.



WITNESS MONUMENT TIES:

Note:

See survey data sketch and new ties on the reverse side of this location record.

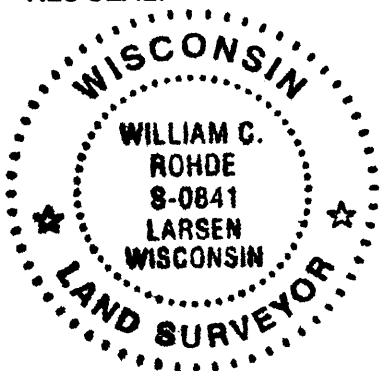
I set a standard white poly 'T' marker post near aluminum witness monument South of corner in lake.

This recovery witnessed by adjoining owner John Hannaford at Fire No. 5216 River Road.

SCALE: 1" = 40'

Unless otherwise indicated, all bearing tree ties are to a .25" dia. by 2.5" long PK nail with a 1.25" dia. steel washer driven into unblazed right face and a .25" dia. by 2.5" long PK nail with a 2" dia. steel washer stamped BT is also driven into unblazed face of bearing tree at DBH; the basis for measured bearings is by compass to nearest degree and all tie distances are measured horizontal by steel tape corrected to nearest 1/100th feet at standard temperature of 68° F.

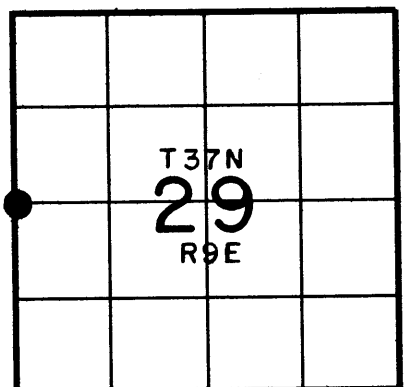
RLS SEAL:



LAND SURVEYOR CERTIFICATE:

I, William C. Rohde, hereby certify that I am duly licensed as a Professional Land Surveyor in the State of Wisconsin; that this USPLS monument location was determined by me and/or under my direct supervision and control; and that this U.S. Public Land Survey Monument Location Record is true and correct to the best of my knowledge and belief.

Signed: *William C. Rohde*
William C. Rohde RLS 841



SECTION LOCATION MAP

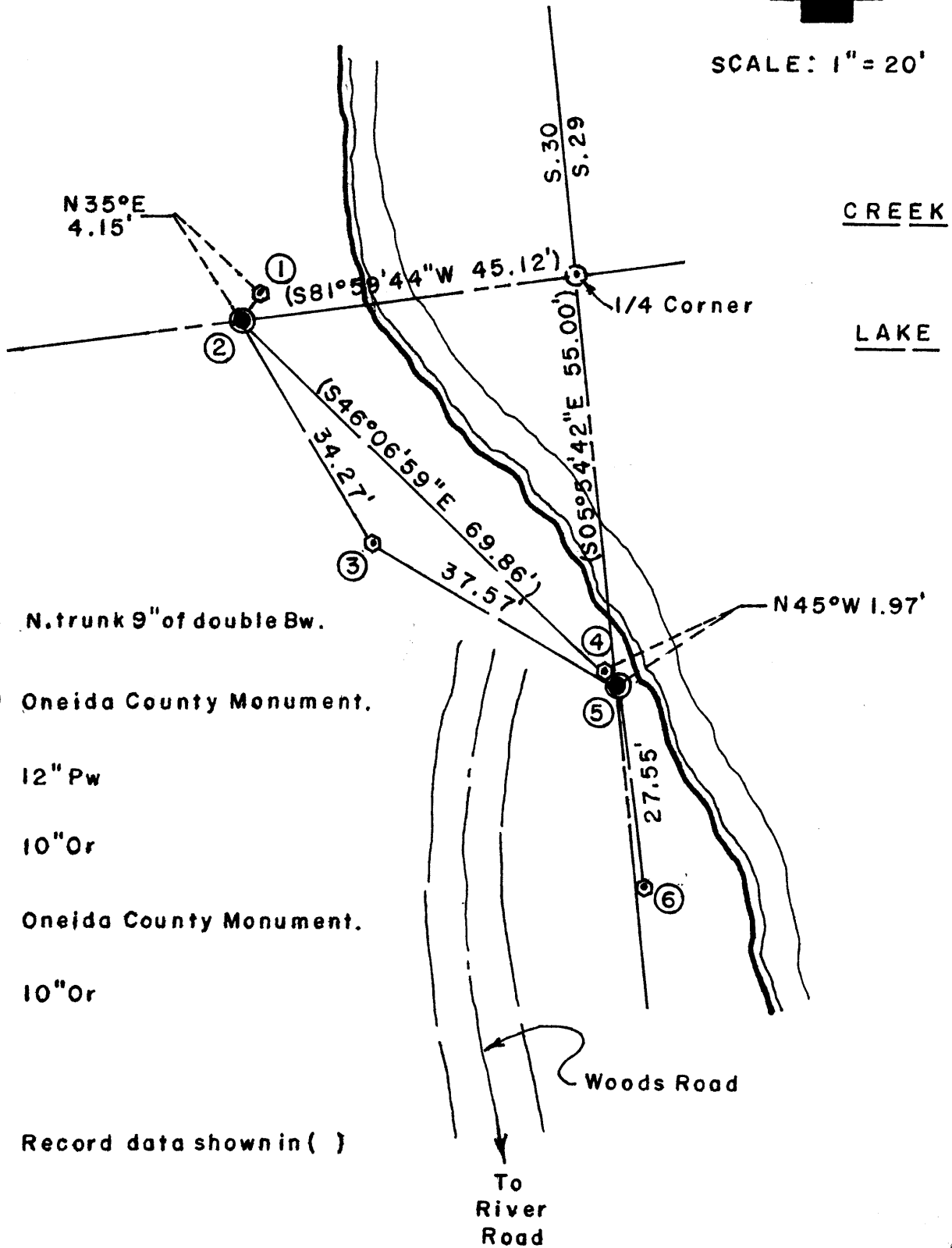
INDEX NO. T 5

3709302000

NORTH



SCALE: 1" = 20'



- ① N. trunk 9" of double Bw.
- ② Oneida County Monument.
- ③ 12" Pw
- ④ 10" Or
- ⑤ Oneida County Monument.
- ⑥ 10" Or

US PUBLIC LAND SURVEY MONUMENT RECORD

Per Wis. Admin. Code § A-E 7.08, a U.S. public land survey monument record shall be prepared and filed with the county survey records as part of any land survey within 60 days of setting or accepting the corner, which includes or requires the perpetuation, restoration, or use of a U.S. public land survey corner and when any of the situations in Wis. Admin. Code § A-E 7.08(1)(a), (b) or (c) arise.

3(a) Corner Identification:

Found two Oneida County aluminum monuments-
Witness Corners to the
East 1/4 corner
Section 30
Township 37 North
Range 9 East
4th Principal Meridian
Town of Pine Lake
Oneida Co., WI

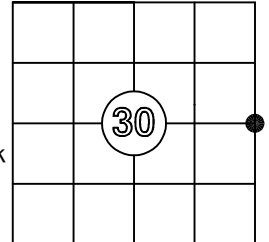
Observed Coordinates:

West witness corner
N: 175444.53
E: 264727.46
Datum: NAD83 (2011)
GNSS Control: WISCRS Network
GNSS Method: RTK-Direct
Verification Method: 2

Observed Coordinates:

South witness corner
N: 175391.03
E: 264772.16
Datum: NAD83 (2011)
GNSS Control: WISCRS Network
GNSS Method: RTK-Direct
Verification Method: 2

**CORNER ID:
3709302000**



History of Original Corner Establishment

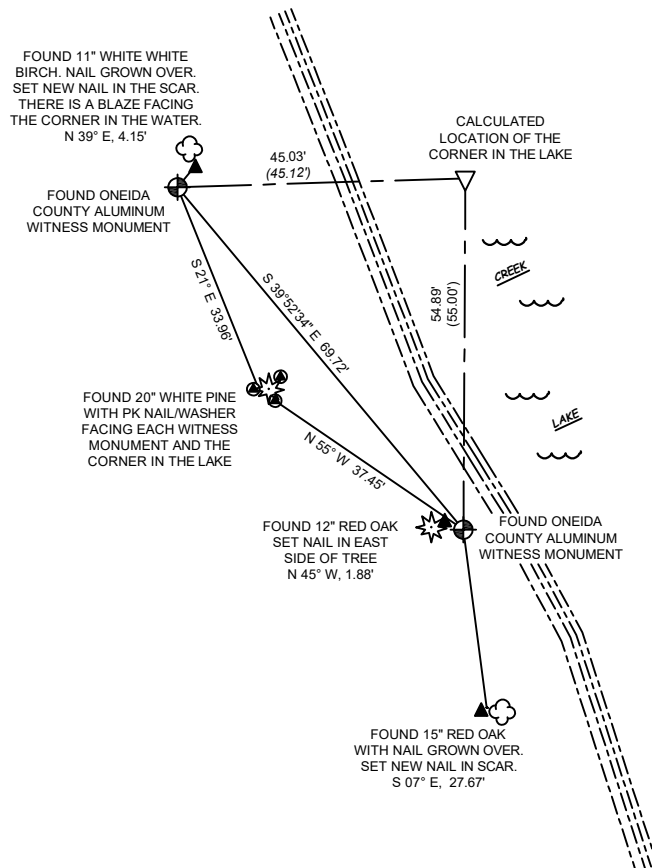
Corner Set: Wood Post
Original Surveyor: Wm. Daugherty
Date of Survey: August, 1863
Tamarack, 8" N 32° E, 9 links
Tamarack 10", 8" S32 1/2° W, 13 links

The coordinate value has been verified by at least one of the following methods: 1) comparison to a previously GNSS determined published value; 2) The value is the average of two or more GNSS observations at markedly different times; 3) one or more distances were measured to the corner from temporary GNSS observed offset locations.

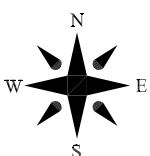
3(b)((c)(d)(f)(g)(h)

This is a continuation of a previous USPLSS Monument Record by Surveyor William Rohde (2006). See previous record for additional history on this corner.

- 11/20/2006 - Bill Rohde, S-841, notes that he found a 1" iron pipe west of the corner in the lake and a 1" iron pipe south of the corner in the lake. He set an Oneida County aluminum monument over each one, seven inches above grade and stamped to identify the witness corner.
- 11/8/2025 - I, Anthony Jones, S-2508, found both of Rohde's monuments in good condition, as described. I found all of his witness trees also in good condition. All are noted below.



Bearings: Grid
Scale: 1"=30'



3(i)

I, Anthony R. Jones, Wisconsin Professional Land Surveyor No S-2508, hereby certify that the corner location shown on this record was determined by me, or under my direction or control, and that this U.S. Public Land Survey Monument Record is correct and complete to the best of my knowledge and belief.

