

CERTIFIED LAND CORNER RESTORATION

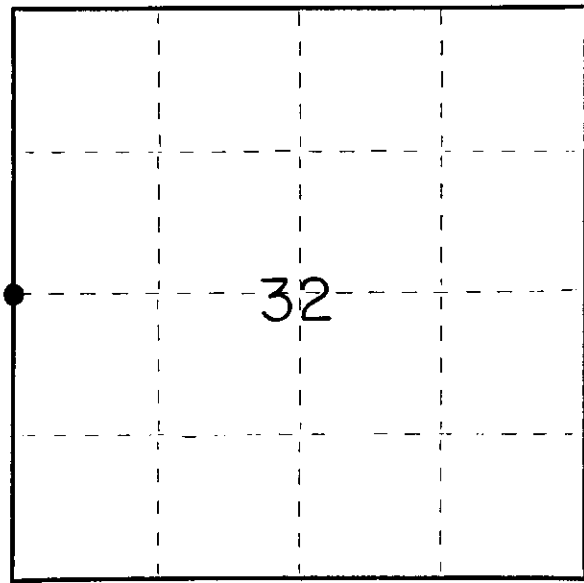
Index No. X-5

State of Wisconsin }  
County of Oneida } ss.

I William Immich 26, do hereby  
certify that on the September 30 day  
of September, 1980, I found  
evidence of the West one-quarter  
corner of Section 32  
Township 37, North, Range  
9 East, Fourth Principal Meridian,  
as described hereon; and that from this evidence  
I established a new monument and accessories  
as described hereon to perpetuate the original  
location of this corner.

Resident witnesses:

Mark Hendrichsen  
Michael Rompelt



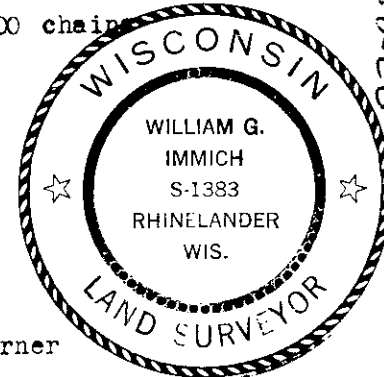
● = Corner monument restored.

History of original corner establishment:

- 1863 William E. Daugherty: North between Sec. 31 & 32 Var. 6°E, 40.00 chain set 1/4 corner B.T.s Aspen 6" S73°W 26 lks., B. Pine 6" N82°E 9lks.
- February 1891, B.F. Dorr, Plat of Town Site Of Pelican tied to 1/4
- August 5, 1898, B.F. Dorr at 1/4 corner
- July 24, 1946, A.J. Lytle Sr. Found iron pipe at 1/4 corner
- May 16, 1972 J.C. Kirby found iron pipe at 1/4 corner

Description of corner evidence found:

- Found iron pipe, checked with center 1/4 of section 32 to confirm corner

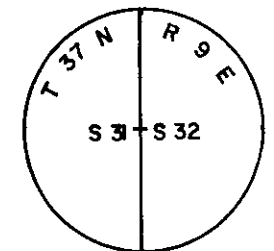


Description of monument and accessories I established to perpetuate the original location of this corner.

Set Capped Aluminum Oneida County Monument stamped as follows:

Witnesses;

- P.K. in side of power pole N44°W 45.14 ft.
- Center of railroad switch S75°E 49.42 ft.
- Center of railroad switch S8°W 104.32 ft.
- 5" Ash P.K. nail in side S82°W 103.97 ft.



Dated at Rhinelanders, Wis., this 4th day of NOVEMBER, 1980

Signature William Immich Title Registered Land Surveyor Registration No. S-1383  
(County Surveyor, Registered Land Surveyor, or other duly authorized official)

Office of Register of Deeds, County of Oneida I hereby certify that the within  
instrument was filed in this office for record on the 11 day of June, 1986  
at 4:00 o'clock P. M.

Doris Verage Kuehn  
(Register of Deeds)

By Stephen J. Pitts Deputy

FORM 985 H. C. MILLER CO., MILWAUKEE

3709312000

## US PUBLIC LAND SURVEY MONUMENT RECORD

Per Wis. Admin. Code § A-E 7.08, a U.S. public land survey monument record shall be prepared and filed with the county survey records as part of any land survey within 60 days of setting or accepting the corner, which includes or requires the perpetuation, restoration, or use of a U.S. public land survey corner and when any of the situations in Wis. Admin. Code § A-E 7.08(1)(a), 7.08(1)(b) or 7.08(1)(c) arise.

**3(a) Corner location:**

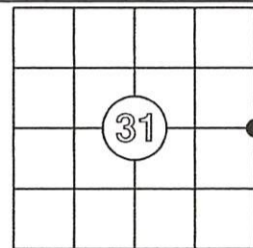
Found aluminum monument  
West 1/4 Corner  
Section 31  
Township 37 North  
Range 9 East  
4th Principal Meridian  
City of Rhinelander  
Oneida Co., WI

**WISCRS:**

N: 169,664.68 (*rec*) 169,664.69 (*meas*)  
E: 264,791.64 (*rec*) 264,791.63 (*meas*)  
Datum: WISCRS (2011)  
GNSS Control: CORS NETWORK  
GNSS Method: RTK  
Verification Method: 1

The coordinate value, if shown, has been verified by at least one of the following methods: 1) comparison to a previously GNSS determined published value; 2) The value is the average of two or more GNSS observations at markedly different times; 3) one or more distances were measured to the corner from temporary GNSS observed offset locations.

CORNER ID: 3709312000



**(b) History of Original Corner Establishment**

Corner Set: Wood Post  
Original Surveyor: Wm. Daugherty  
Date of Survey: 1863

Original Bearing Trees:  
6" aspen- S 73° W, 26 links  
6" b. pine - N 82° E, 91 links

(b)(f)(g)(h) Description of monument found at this corner and, if it was accepted, state all evidence (material, testimonial, occupational, plats, record, other monuments) used as a basis for establishing location. If re-establishing through lost corner proportionate methods, indicate all monuments, distances and directions used to establish this location. Indicate type of monument and sign post found or set.

This is a perpetuation of the Certified Land Corner Restoration form by William Immich, S-1383, dated Sept. 26, 1980. See previous record for additional history on this corner.

7/5/2022: I recovered this corner during the course of surveying Lots 4 and 5 of Block 16 of the Plat of the Townsite of Pelican. It appears that the power pole at N 44° W, 45.14' has been replaced. I did not use the new pole for a tie. The 5" Ash tree at S 82° W, 108.97' is no longer viable as there is a huge hedge between it and the monument and I could not find the P.K. Nail. The center of the railroad switch at S 8° W, 104.32 feet was not evident. I measured a direct reading with my total station to the center of the switch at S 75° E, 49.42' and found my reading in harmony with this tie. I occupied this monument with my Carlson RTK rover and matched with the published coordinates as shown on the Oneida County GIS Mapping site. I accepted this location and monument as the corner and set four new 1 1/4 inch iron pipes for new ties as shown below.

(c)(d)(e) Plan view of corner with ties to at least 4 witness monuments. If in disagreement with previously established corner, show the distances between the two corners and also indicate the ties to the disputed.

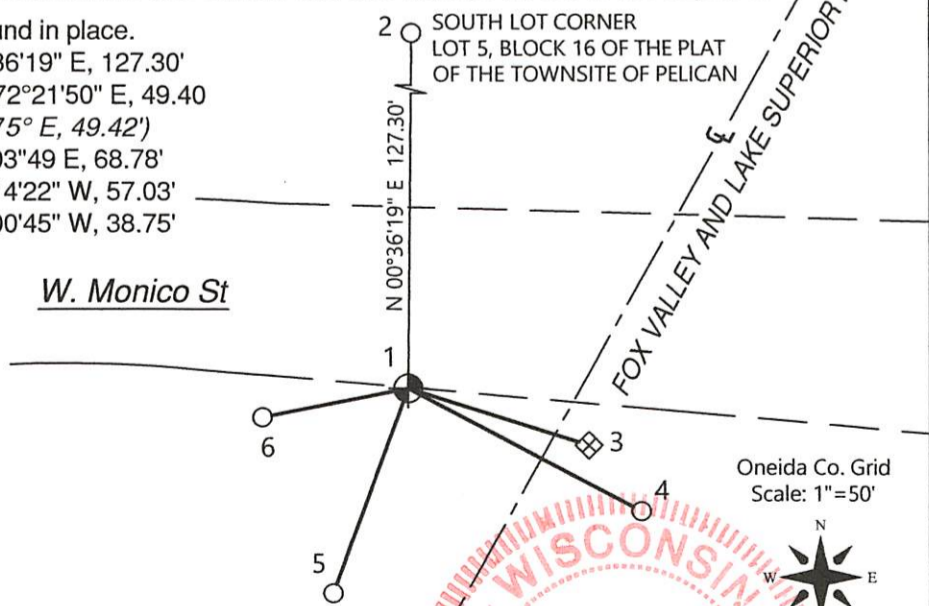
1. Oneida Co Aluminum Monument-found in place.
2. 1 1/4" x 18" iron pipe (made), N 00°36'19" E, 127.30'
3. Center of railroad switch (found), S 72°21'50" E, 49.40'  
(S 75° E, 49.42')
4. 1 1/4" x 18" iron pipe (made), S 62°03'49" E, 68.78'
5. 1 1/4" x 18" iron pipe (made), S 20°14'22" W, 57.03'
6. 1 1/4" x 18" iron pipe (made), S 79°00'45" W, 38.75'

REGISTER OF DEEDS OFFICE  
ONEIDA COUNTY  
FILED

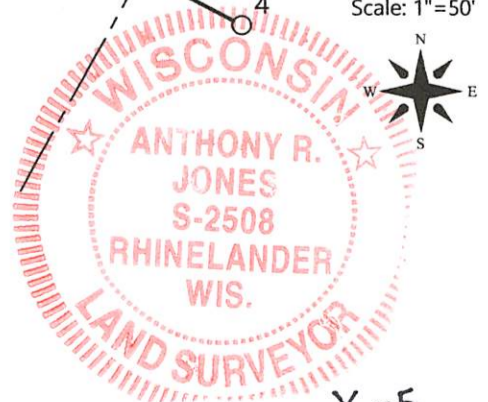
AUG 31 2022

KYLE J. FRANSON  
REGISTER OF DEEDS

W. Monico St



Oneida Co. Grid  
Scale: 1"=50'



**LEGEND**

○ SET 1 1/4" X18" IRON PIPE

(i) I, Anthony R. Jones, Wisconsin Professional Land Surveyor No S-2508, hereby certify that the corner location shown on this record was determined by me, or under my direction or control, and that this U.S. Public Land Survey Monument Record is correct and complete to the best of my knowledge and belief.

*Anthony R. Jones*  
Anthony R. Jones, PLS No. S-2508      7/5/22      Date

Index No. **X-5**