

CERTIFIED LAND CORNER RESTORATION

Index No. 2-9

State of Wisconsin }  
County of ONEIDA } ss.

I William Luntich, do hereby certify that on the 26 day of September, 1980, I found evidence of the Southeast corner of Section 32 Township 37, North, Range 9 East, Fourth Principal Meridian, as described hereon; and that from this evidence I established a new monument and accessories as described hereon to perpetuate the original location of this corner.

Resident witnesses:

Mark Henderson  
Edward Rongstad

History of original corner establishment:

- 1859, Hiram C. Fellows; West between Sec. 4 & 33 Var. 70' 15" E 80.00 set corner to Sec. 4, 5, 32, 33 B.T.'s Birch 10" N21W 8 lks., Maple N64°E 5lks., Birch S18°E 7 lks., W Pine 7" S 6°0' W 14 lks.
- May 5, 1904, D. H. Vaughan found post New B.T. Spruce N39°W 41 lks.
- April 20, 1950, F.R. Wincentsen found iron pipe in road; set iron pipe N5° 16'E 24.75ft.
- April 28, 1967 State Highway Commission, Found iron pipe and reference pipe
- June 6, 1977 John Margiten found P.K. nail at corner location

Description of corner evidence found:

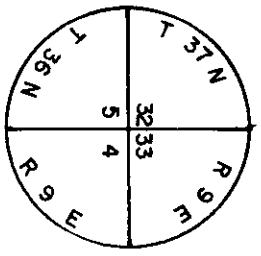
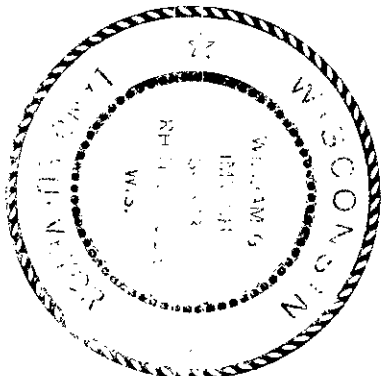
- Found P.K. nail checked with reference pipe

Description of monument and accessories I established to perpetuate the original location of this corner.

Set Capped aluminum Oneida County Monument stamped as follows:

Witnesses:

- top nut of hydrant S76°W 220.30 ft.
- P.K. nail in side of power pole # 58CC64 N10°W 44.69 ft.
- P.K. nail in side of power pole S19°E 89.00 ft.



Dated at Rhinelander, Wis., this 4th day of NOVEMBER, 1980.

Signature William Luntich Title Registered Land Surveyor Registration No. S-1383  
(County Surveyor, Registered Land Surveyor, or other duly authorized official)

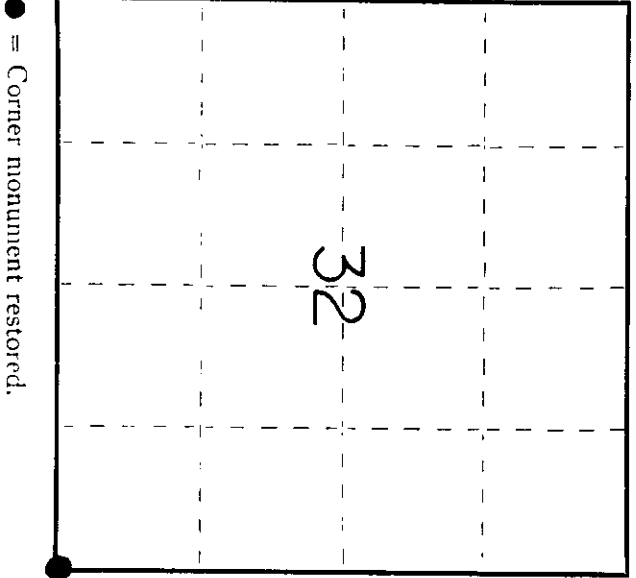
Office of Register of Deeds, County of Oneida  
Instrument was filed in this office for record on the 11 day of June, 1980  
at 4:00 o'clock P. M.

Debra Veroy  
(Register of Deeds)

By Virginia A. Bitts Deputy

I hereby certify that the within

3709320000



● = Corner monument restored.

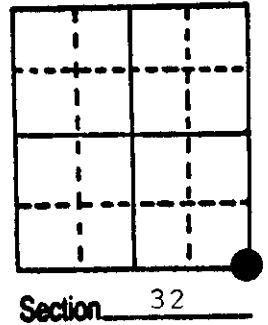
# U.S. PUBLIC LAND SURVEY MONUMENT RECORD

Note: This form is intended and designed to fulfill all requirements of Wisconsin Administrative Code, Chapter A-E 5.02, U.S. Public Land Survey Monument Record (3) (a) (b) (c) (d) (e) (f) (g) (h) (i). An additional sheet may be added if necessary to conform with said requirements.

(a) Corner location: Township 37 North  
 Range 9 East ~~24~~

Town/City/Village Rhinelander

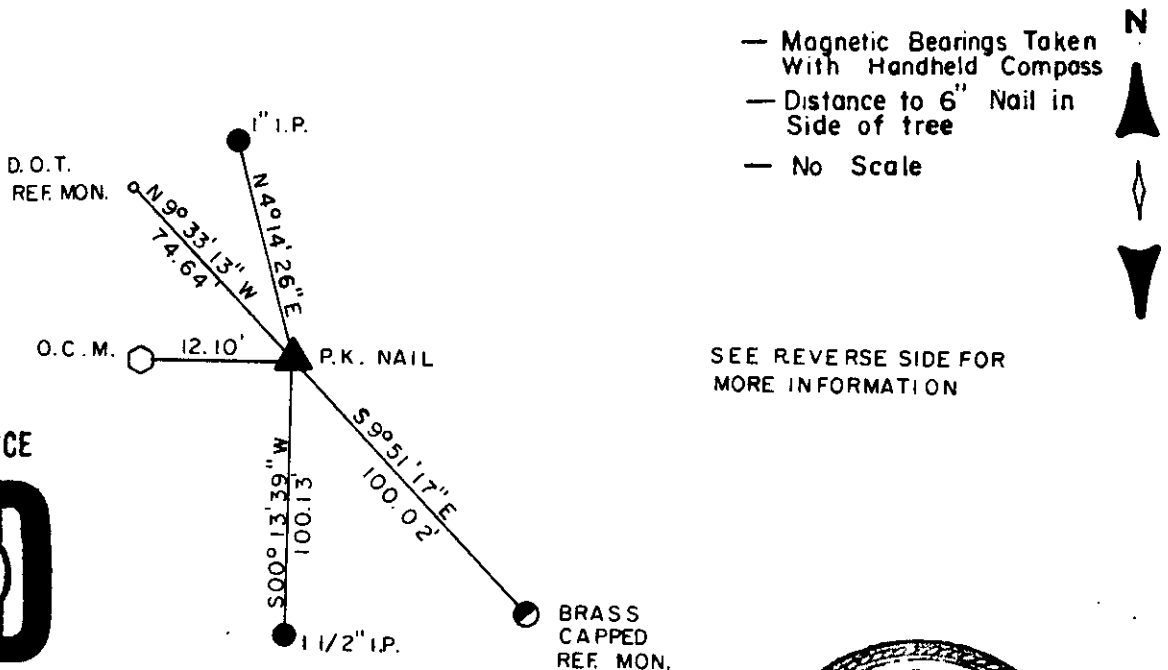
County Oneida



(b) (f) (g) (h) Description of monument found at this corner and if it was accepted, state all evidence (material, testimonial, occupational, plats, records, other monuments) used as a basis for accepting. If not accepted or if nothing was found, state evidence used as basis for establishing location. If reestablished through lost corner proportionate methods, indicate all monuments, distances and directions used to establish.

- 1859 H.C. Fellows West between 4 and 33 80 ch. set Post Birch 10" N 21 W 8 lks. Birch 8" S 18 E 7 lks. Maple 8" N 64 E 5 lks. W. Pine 7" S 65 W 14 lks.
- 1904 Vaughan found original Post and B.T.'s Post in good shape, New B.T. Spruce N 39 W 41 lks.
- 1950 F.R. Wincentzen found iron pipe in road set iron pipe N 5-16' E 24.75'.
- 1967 St. Hwy. Comm. found iron pipe and Ref. pipe.
- 1977 J. Margitan found P.K. at corner location.
- 1980 W. Immach replaced P.K. with Oneida County Monument.
- 1991 W. Badow found monument and witnessed as shown below:

(c) (d) (e) Plan view of corner with ties to at least 4 witness monuments. If in disagreement with previously established corner, show the distances between the two corners and also indicate the ties to the disputed corner.



SEE REVERSE SIDE FOR MORE INFORMATION

REGISTER OF DEEDS OFFICE  
 ONEIDA COUNTY, WIS.  
**FILED**  
 DEC 17 1991

At        O'Clock        M  
**THOMAS H. LEIGHTON**  
 REGISTER OF DEEDS

(i) I, William E. Badow  
 (type or print name) certify that the corner location on this record was determined by me or under my direction and control and that this U.S. Public Land Survey Monument Record is correct and complete to the best of my knowledge and belief.

William E. Badow 12-10-91  
 Signature Date

GENISOT & ASSOCIATES INC.  
 1512 EAGLE ST., RHINELANDER, WIS.

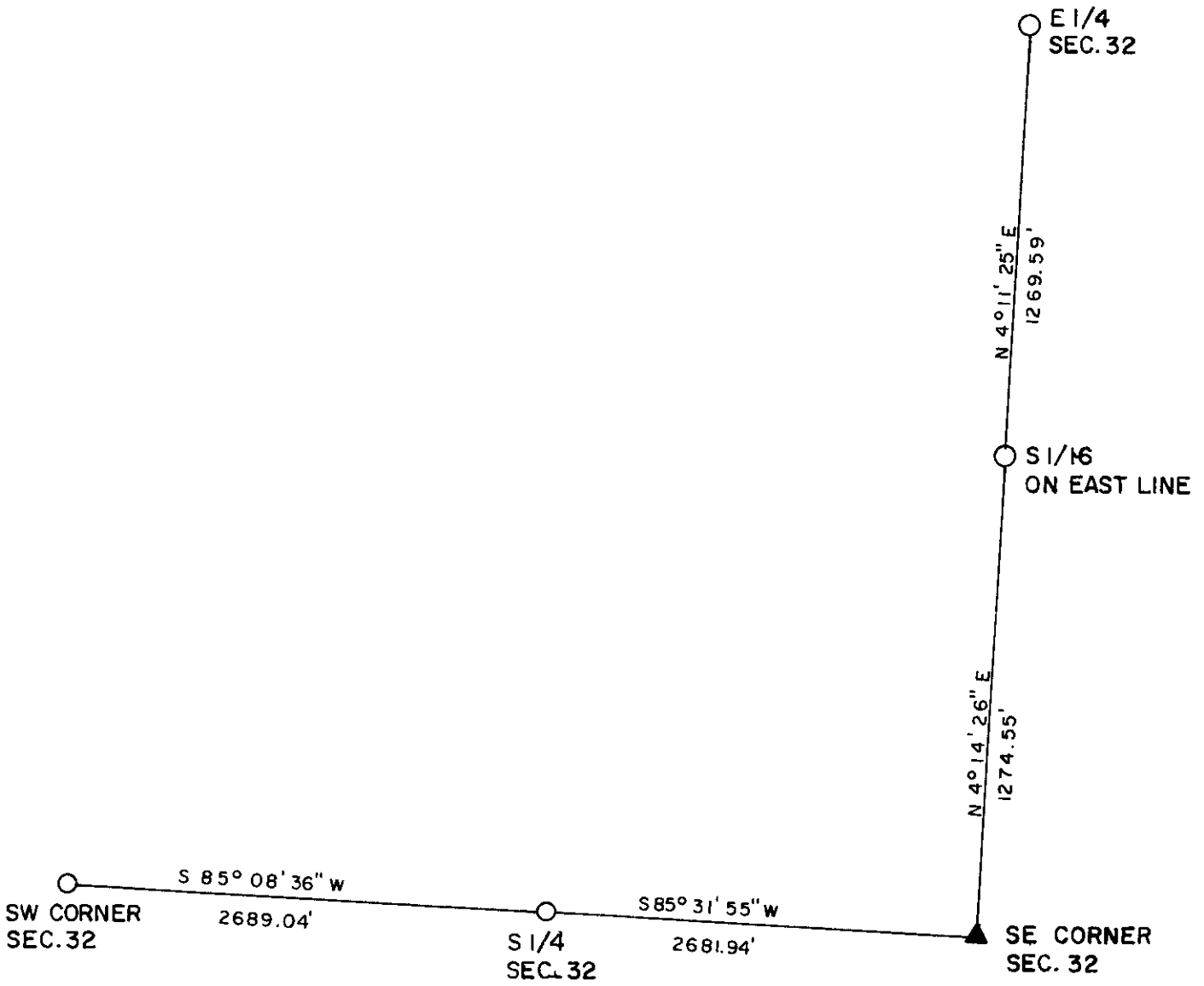


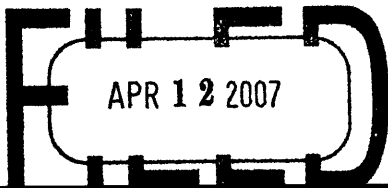
Index No. Z-9

3709320000



Stock No. 26273





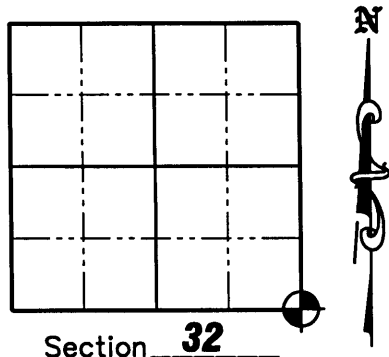
At \_\_\_\_\_ O'Clock \_\_\_\_\_ M  
**U.S. PUBLIC LAND SURVEY MONUMENT RECORD**  
REGISTER OF DEEDS

NOTE: This form is intended and designed to fulfill all requirements of Wisconsin Administrative Code, Chapter A-E 7.08 U.S. Public Land Survey Monument Record (3)(a)(b)(c)(d)(e)(f)(g)(h)(i). An additional sheet may be added if necessary to conform with said requirements.

(a) Corner location: Township 37 North  
Range 9 East/West

City of RHINELANDER

County ONEIDA



(b)(f)(g)(h) Description of monument found at this corner and if it was accepted, state all evidence (material, testimonial, occupation, plats, records, other monuments) used as a basis for accepting. If not accepted or if nothing was found, state evidence used as a basis for establishing location. If reestablished through lost corner proportionate methods, indicate all monuments, distances and directions used to establish. Indicate type of monument found or set and sign post.

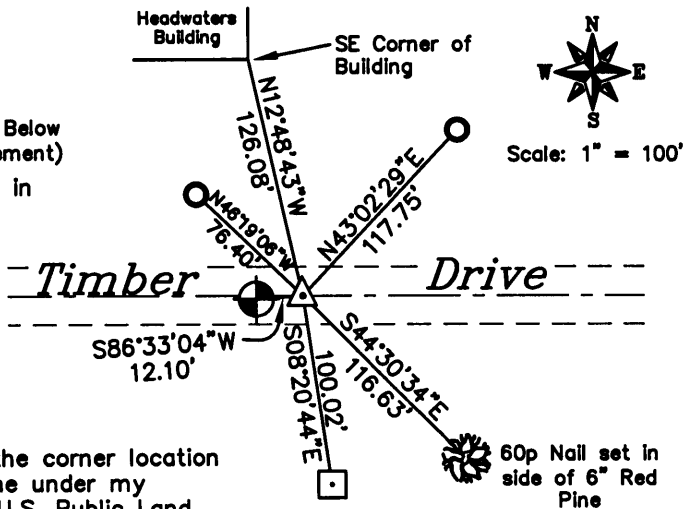
- 1859: H.C. FELLOWS WEST BETWEEN 4 AND 33 - 80 CH. SET POST  
BIRCH 10" N21W 8 LKS. BIRCH 8" S18E 7LKS.  
MAPLE 8" N64E 5 LKS. W. PINE 7" S65W 14 LKS.
- 1904: VAUGHAN FOUND ORIGINAL POST AND B.T.'S POST IN GOOD SHAPE  
NEW B.T. SPRUCE N39W 41 LKS.
- 1950: F.R. WNCENTSEN FOUND IRON PIPE IN ROAD. SET IRON PIPE N5°16'E 24.75'.
- 1967: ST. HWY. COMM. FOUND IRON PIPE AND REF. PIPE.
- 1977: J. MARGITAN FOUND P.K. AT CORNER LOCATION.
- 1980: W. IMMICH REPLACED P.K. WITH ONEIDA COUNTY MONUMENT.
- 1991: W. BANDOW FOUND ONEIDA COUNTY MONUMENT AND DIDN'T ACCEPT IT AS THE CORNER. HE AND SET A P.K NAIL 12.10' EAST OF THE FOUND ONEIDA COUNTY MONUMENT AS THE NEW CORNER AND MADE NEW REFERENCE MONUMENTS.
- 2005: MATTHEW E. HOGLUND FOUND THE ONEIDA COUNTY MONUMENT. THROUGH TRAVERSING TO NUMEROUS SURVEYS AND FOUND MONUMENTS IN SECTION 32 AND IN SECTION 5-36-9 IT WAS VERIFIED THAT THE PREPONDERANCE OF EVIDENCE SUPPORTS THE FORMER FOUND PK NAIL LOCATION 12.10' EAST AS THE CORRECT CORNER LOCATION. A RAILROAD SPIKE WAS SET AT THE CORNER LOCATION 12.10' EAST OF THE FOUND ONEIDA COUNTY MONUMENT.

(c)(d)(e) Plan view of corner with ties to at least 4 witness monuments. If in disagreement with previously established corner, show the distances between the two corners and also indicate the ties to the disputed corner.

**LEGEND**

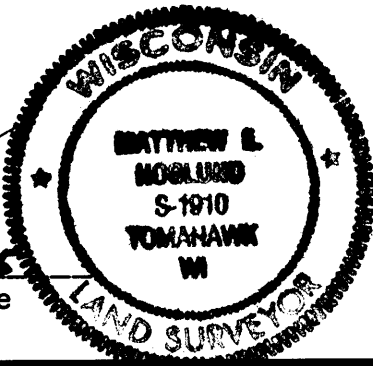
- 2-1/2" Aluminum Capped (0.4' Below Pavement) Monument found
- Brass Capped monument found in Concrete.
- 3/4" x 24" iron rebar set
- Railroad Spike Set

NOTE: The published O.C. GPS coordinates are on the O.C. Monument, NOT the Section Corner.



(i) I, Matthew E. Hoglund, certify that the corner location on this record was determined by me under my direction and control and that this U.S. Public Land Survey Monument is correct and complete to the best of my knowledge and belief.

Signature \_\_\_\_\_ Date 12/22/06  
Proj. # 667



370932 0000

2-9