

CERTIFIED LAND CORNER RESTORATION

Index No. X9

State of Wisconsin

County of ONEIDA } ss.

I William Imnich, do hereby certify that on the 26 day of September, 1980, I found evidence of the East one-quarter corner of Section 32 Township 37, North, Range 9 East, Fourth Principal Meridian, as described hereon; and that from this evidence I established a new monument and accessories as described hereon to perpetuate the original location of this corner.

Resident witnesses:

Mark Winkler
Miscel Romero

History of original corner establishment:

- 1863 William E. Daugherty: North between Sec. 32 & 33, Var. 60-30'E 40.00 chains set 1/4 corner B.T.s Cedar 10" N50°W 5 lks.; Cedar 8" S73°E 2 lks.
- November 20, 1890, B.F. Dorr at 1/4 corner
- May 5, 1904, D.H. Vaughan Found original bearing trees
- November 8, 1953 F.R. Vincentsen Found well point

Description of corner evidence found:

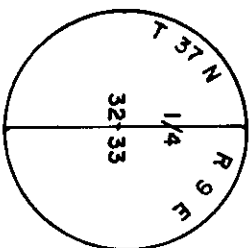
- Found well point

Description of monument and accessories I established to perpetuate the original location of this corner.

- Set capped aluminum Oneida County Monument stamped as follows;

Witnesses:

- 8" Balsam N 23° W 5.58 ft.
- 9" twin Cedar S 82° E 43.13 ft.
- 8" Maple S 16° E 18.38 ft.
- 5" Cedar S 49° W 29.60 ft.
- Center line of road South 8 ft.



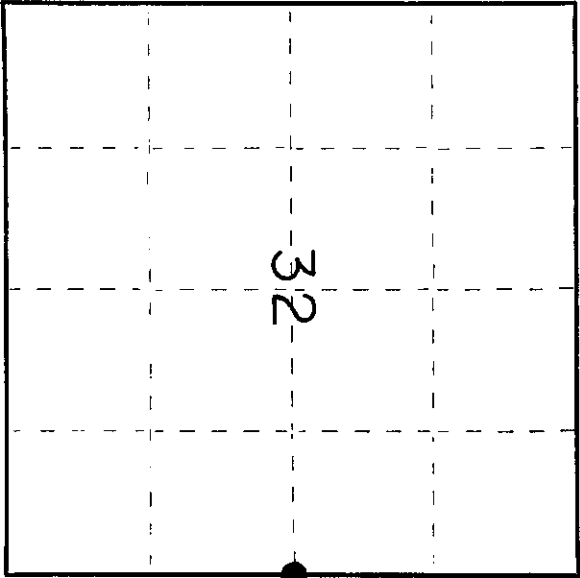
Dated at Rhineland, Wis. this 4th day of NOVEMBER, 1980.

Signature: William Imnich Title: Registered Land Surveyor Registration No. S-1383
(County Surveyor, Registered Land Surveyor, or other duly authorized official)

Office of Register of Deeds, County of Oneida I hereby certify that the within instrument was filed in this office for record on the 11 day of June, 1980 at 4:00 o'clock P M.

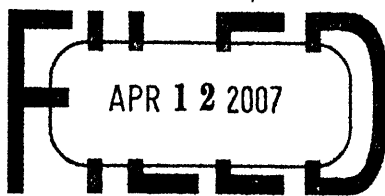
Doris Joyce Kuehn
(Register of Deeds)

By Virginia A. Jones Deputy



● = Corner monument restored.

3709 322000



At _____ O'Clock _____ M
THOMAS H. LEIGHTON
Register of Deeds

U.S. PUBLIC LAND SURVEY MONUMENT RECORD

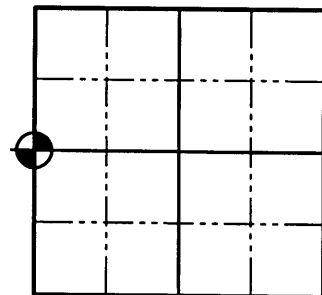
NOTE: This form is intended and designed to fulfill all requirements of Wisconsin Administrative Code, Chapter A-E 7 .08 U.S. Public Land Survey Monument Record (3)(a)(b)(c)(d)(e)(f)(g)(h)(i). An additional sheet may be added if necessary to conform with said requirements.

(a) Corner location: Township 37 North

Range 9 East/West

Town of PINE LAKE

County ONEIDA



Section 33

N



(b)(f)(g)(h) Description of monument found at this corner and if it was accepted, state all evidence (material, testimonial, occupation, plats, records, other monuments) used as a basis for accepting. If not accepted or if nothing was found, state evidence used as a basis for establishing location. If reestablished through lost corner proportionate methods, indicate all monuments, distances and directions used to establish. Indicate type of monument found or set and sign post.

1863: WILLIAM E. DAUGHERTY NORTH BETWEEN SEC.32 & 33, VAR. 6°30'E 40.00 CHAINS SET 1/4 CORNER. B.T.'S CEDAR 10° N55°W 5 LKS. CEDAR 8° S73°E 2 LKS.

NOVEMBER 20, 1890: B.F. DORR AT 1/4 CORNER.

MAY 5, 1904: D.H. VAUGHAN FOUND ORIGINAL BEARING TREES

NOVEMBER 8, 1953: F.R. WINCENTSEN FOUND WELL POINT.

SEPTEMBER 26, 1980: WILLIAM G. IMMICH FOUND WELL POINT AND REPLACED IT WITH A SET ALUMINUM ONEIDA COUNTY MONUMENT.

SEPTEMBER 31, 2005: MATTHEW E. HOGLUND FOUND REMNANTS OF WELL POINT NEAR CORNER LOCATION AND BEARING TREES. REESTABLISHED CORNER FROM EXISTING BEARING TREES. WE SET ONEIDA COUNTY ALUMINUM MONUMENT AND REFERENCED IT AS SHOWN BELOW.

(c)(d)(e) Plan view of corner with ties to at least 4 witness monuments. If in disagreement with previously established corner, show the distances between the two corners and also indicate the ties to the disputed corner.

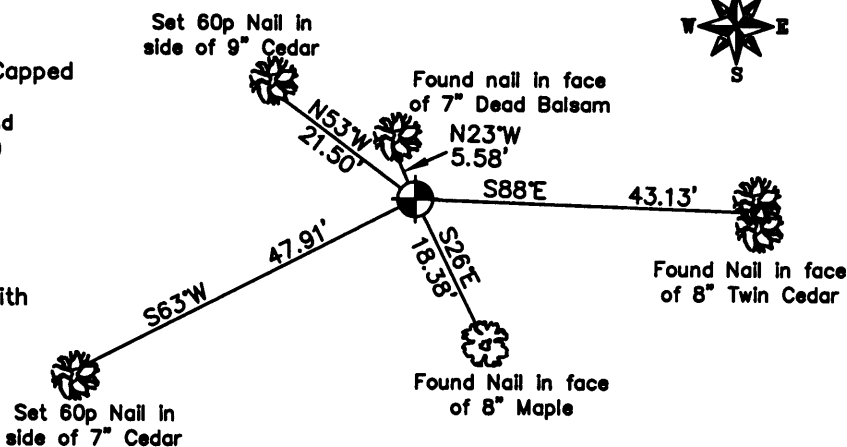
LEGEND



2-1/2" Aluminum Capped Monument Set
(4"x4" wood post found 1' North of Monument)

Notes:

- 1. Drawing in not to scale
- 2. All Bearings were taken with a compass.

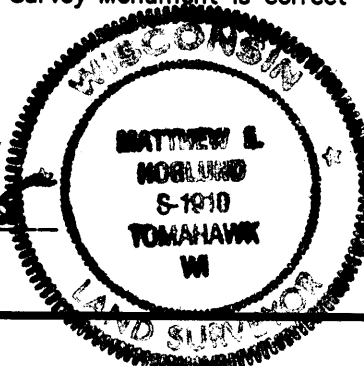


(i) I, Matthew E. Hoglund, certify that the corner location on this record was determined by me under my direction and control and that this U.S. Public Land Survey Monument is correct and complete to the best of my knowledge and belief.

Matthew E. Hoglund
Signature

12/22/05
Date

Proj. # 667



370932 2000

6-X