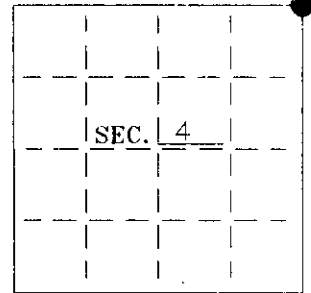


# U. S. PUBLIC LAND SURVEY MONUMENT RECORD

Note: This form is intended and designed to fulfill all requirements of Wisconsin Administrative Code-Chapter A-E 7.08 U. S. Public Land Survey Monument Record (3)(a)(b)(c)(d)(e)(f)(g)(h)(i). An additional sheet may be added if necessary to conform with said requirements.

(a) CORNER LOCATION: Oneida County Coordinates  
NE corner of Sec. 4 N 167332.7400  
 Township 36 North E 275495.0904  
 Range 9 East Datum Base --  
 Town Pelican County of Oneida



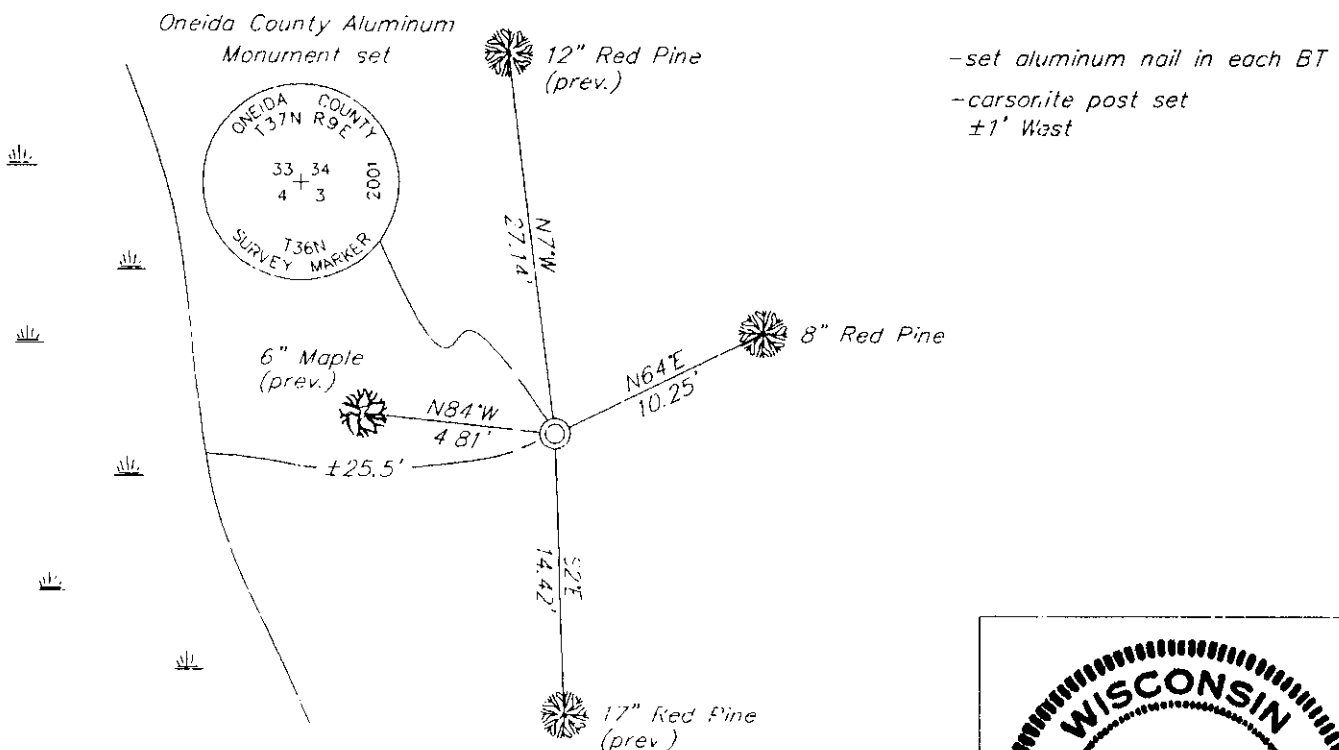
(b) HISTORY OF ORIGINAL CORNER ESTABLISHMENT:

Original Surveyor: H.C. Fellows Original B.T.'S  
 Date of Survey: Commenced 1859 9" Y. Pine N48°W, 17 lks  
 Completed 1859 16" Y. Pine N32°E 32 lks  
 8" Y. Pine S49°E 7 lks  
 8" Birch S33°W 13 lks

(b)(f)(g)(h) Description of monument found at this corner and if it was accepted—state all evidence (material—testimonial—occupation—plats—records—other monuments) used as a basis for accepting. If not accepted or if nothing was found state evidence used as basis for establishing location. If reestablished through lost corner proportionate methods indicate all monuments—distances and directions used to establish. Indicate type of monument and sign post found or set.

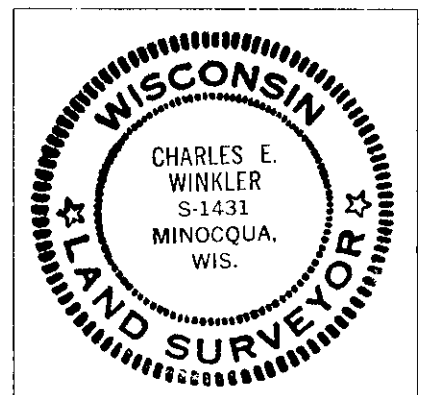
- 1897— Map by B.F. Dorr (see Oneida County Surveyor's Map #A534) shows "Orig. Trees" at corner location.
- 1902— Notes by Maine (Book 3, page 104) state "N.E. Cor. Found 3 Orig. Trees & Post".
- 2001— I found and accepted a 1-1/4" well point with a wood post adjacent and replaced it with an Oneida County Aluminium Monument. I made BT's as shown below.

(c)(d)(e) Plan view of corner with ties to at least 4 witness monuments. If in disagreement with previously established corner—show the distances between the two corners and also indicate the ties to the disputed.



(i) I Charles E. Winkler S-1170  
 hereby certify that the corner location on this record was determined by me or under my direction and control and that this U.S. Public Land Survey Monument Record is correct and complete to the best of my knowledge and belief.

Charles E. Winkler 2/26/2002  
 Signature Foltz and Associates, Inc., Date



INDEX NO. A 13

37 69 33 00 00