

CERTIFIED LAND CORNER RESTORATION

Index No. W-17  
W-12

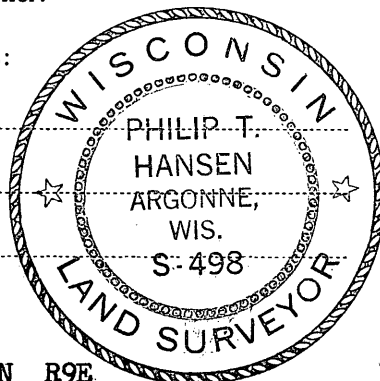
State of Wisconsin }  
County of Oneida } ss.

I Philip T. Hansen, do hereby certify that on the 16th day of February, 1977, I found evidence of the N 1/16 corner of Section 33 - 34 Township 37, North, Range 9 East, Fourth Principal Meridian, as described hereon; and that from this evidence I established a new monument and accessories as described hereon to perpetuate the original location of this corner.

Resident witnesses:

Jim Claflin

Herb Wagoner



History of original corner establishment:

Corner established by N. Loftus, Ripco Surveyor, in 1961. Set corner equidistant between 1/4 corner Sec. 33 & 34 and N-W 1/4. Set iron pipe and marked NBT. Corner is 20.935 chains north of W 1/4 corner.  
NBTs - Spruce 5" N 50° W 10 1/2 links and Spruce 5" N 62° E 33 links.

Description of corner evidence found:

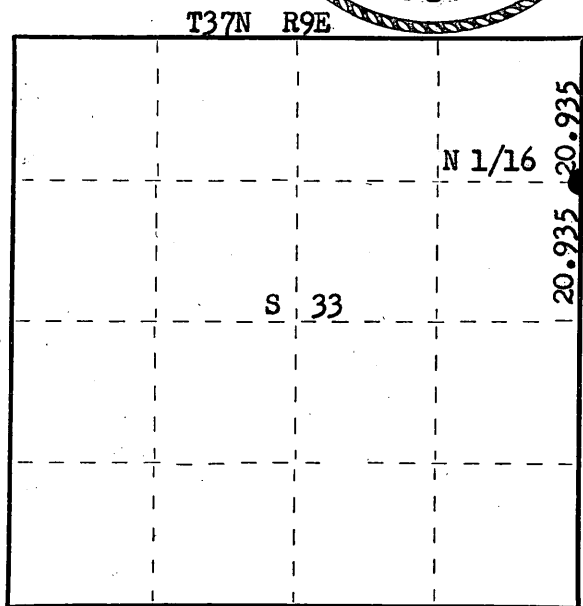
Recovered 1" iron pipe with alloy cap in excellent condition.  
Monument projects 24" above ground, stamped:

Recovered OBTs - Black Spruce 5" (6") N50°W 10.5 links, scribed N 1/16 S33 BT.  
Black Spruce 5" (6") N 62° E 33.0 links, scribed 1/16 S34 BT.

N 1/16  
S33 | S34  
RIPCO

Description of monument and accessories I established to perpetuate the original location of this corner.  
As monument was recovered in excellent condition, it was left in place.  
Added stamping T37N R9E to cap.

FORM 985 H. C. MILLER CO., MILWAUKEE



○ = Corner monument restored.

Dated at Rhineland, Wis., this 18th day of March, 1977

Signature Philip T. Hansen Title Registered Land Surveyor Registration No. S-498  
(County Surveyor, Registered Land Surveyor, or other duly authorized official)

Office of Register of Deeds, County of Oneida, I hereby certify that the within instrument was filed in this office for record on the 23rd day of March, 1977 at 3:00 o'clock P. M.

Doris Verage Kuehn  
(Register of Deeds)

By \_\_\_\_\_ Deputy

3709 333000