

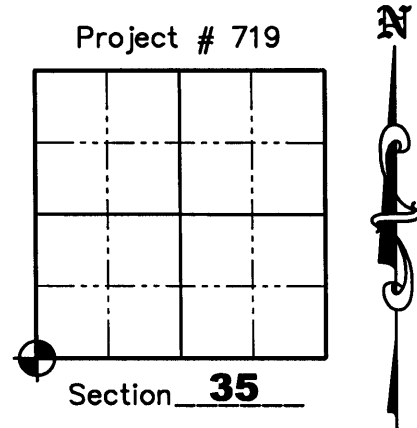
U.S. PUBLIC LAND SURVEY MONUMENT RECORD

NOTE: This form is intended and designed to fulfill all requirements of Wisconsin Administrative Code, Chapter A-E 7 .08 U.S. Public Land Survey Monument Record (3)(a)(b)(c)(d)(e)(f)(g)(h)(i). An additional sheet may be added if necessary to conform with said requirements.

(a) Corner location: Township 37 North
Range 9 East/West

Town of Pine Lake

County of Oneida



(b)(f)(g)(h) Description of monument found at this corner and if it was accepted, state all evidence (material, testimonial, occupation, plats, records, other monuments) used as a basis for accepting. If not accepted or if nothing was found, state evidence used as a basis for establishing location. If reestablished through lost corner proportionate methods, indicate all monuments, distances and directions used to establish. Indicate type of monument found or set and sign post.

July 1859 – Hiram C. Fellows set Original Corner BT's: 10" White Pine N43°W 9 lks; 8" White Pine N19°E 6 lks; 10" Aspen S42°E 13 lks; 12" White Pine S37°W 14 lks.

July 1863 – William E. Daugherty ran North random between Section 2 and 3 and fell 53 links West of Post and corrected South.

1897 – D.H. Vaughan ran North from Corner. (Old Field Book 38)

1900 – D.H. Vaughan Ran North, South and West from Corner. (Old Field Book 1)

1903 – D.H. Vaughan went to Corner and set new post and made BT's: 12" W. Pine Stump S19°E 53 lks; 16" W. Pine Stump S88°E 27 lks. (Old Field Book 4)

Novemer 4, 1959 – F.R. Wincentsen identified corner as a Iron Pipe and noted two BT's: 5" Maple N66°W, 4.7'; 7" W. Birch S51°E, 16.2' (Wincentsen Book 1 and P.O.S. O.C.L.I.O. Map Number C-1964)

May 31, 1977 – William E. Bandow found an existing iron pipe and noted the two old BT's per 1959. (P.O.S. O.C.L.I.O. Map Number B-3465)



June 12, 1978 – William Immich found an iron pipe. (C.S.M. Number 577)

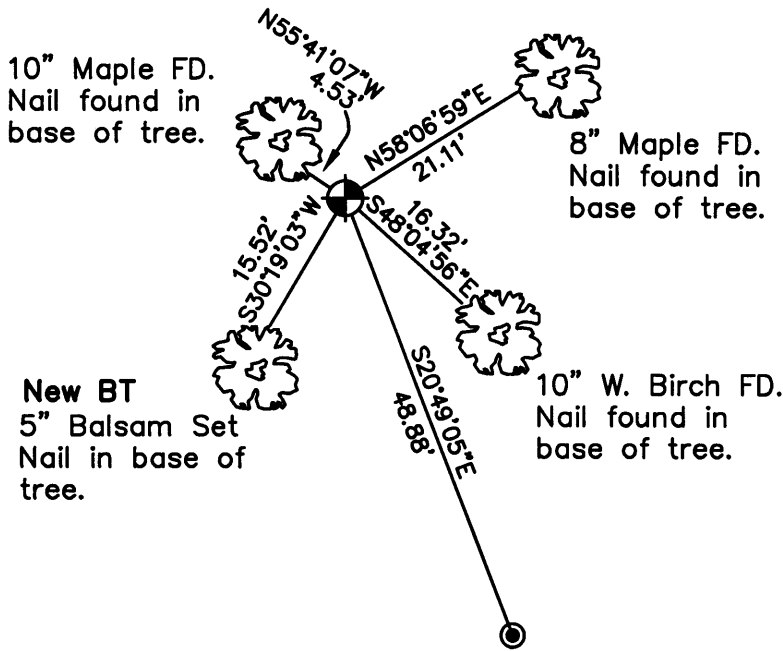
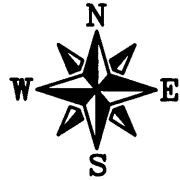
December 31, 2002 – William E. Bandow found a 1" iron pipe and two existing BT's: 9" Birch S53°E, 16.2'; 7" Maple N86°W, 4.7'. They replaced the 1" iron pipe with an Oneida County Aluminum Monument. They also noted that they found a 1-1/2" iron pipe bearing S21°05'04"E, 48.78'.

November 3, 2006 – Matthem E. Hogle found an accepted the Oneida County Aluminum Monument as the Corner. We found 3 existing BT's and set 1 New BT as shown below.

U.S. PUBLIC LAND SURVEY MONUMENT RECORD

LEGEND

-  Oneida County Aluminum Monument Found
-  1-1/2" Iron Pipe Found


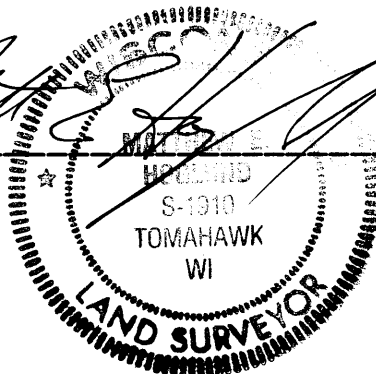


GRAPHIC SCALE



(IN FEET)
1 inch = 20 ft.

(i) I, Matthew E. Hoglund, certify that the corner location on this record was determined by me under my direction and control and that this U.S. Public Land Survey Monument is correct and complete to the best of my knowledge and belief.


 Signature _____ Date 2/27/07


REGISTER OF DEEDS OFFICE
ONEIDA COUNTY, WIS.

FILED
APR 12 2007

At _____ O'Clock _____ M
THOMAS H. LEIGHTON
 REGISTER OF DEEDS

Proj. # 719

41-2