

CERTIFIED LAND CORNER RESTORATION

Index No. **W-14**

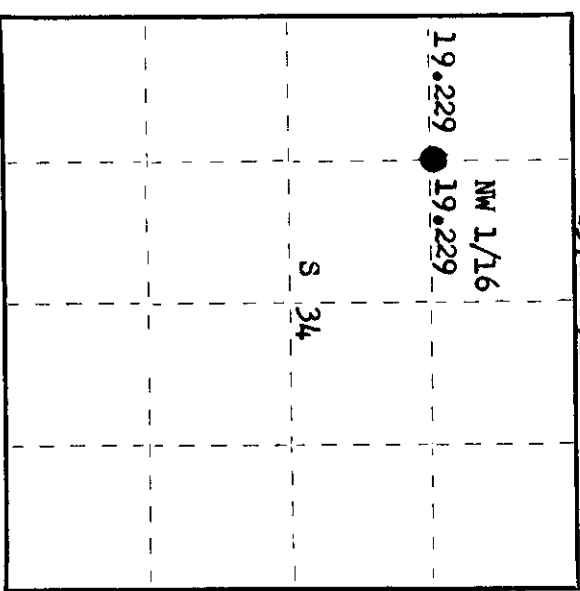
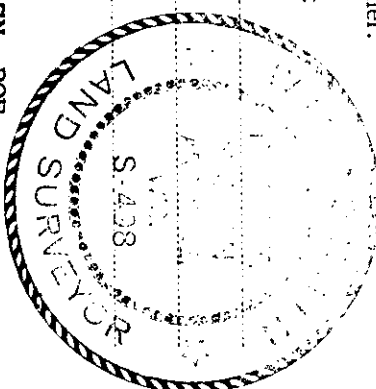
State of Wisconsin

County of **Oneida**

ss.

I **Phillip T. Hansen**, do hereby certify that on the **16th** day of **February**, 19**77**, I found evidence of the **NW 1/16** corner of **Section 34**, Township **37**, North, Range **9 East**, Fourth Principal Meridian, as described hereon; and that from this evidence I established a new monument and accessories as described hereon to perpetuate the original location of this corner.

Resident witnesses:
Jim Claflin
Herb Wagoner



History of original corner establishment: Corner established by N. Loftus, Ripco Surveyor, in 1961. From established NC 1/16 ran random line west, bearing 255° 56' mag. via traverse a distance of 38.458 chains to N 1/16. Computed distance 38.458 chains. Corrected bearing S 72° 45' 30" W. Set NW 1/16 at 19.229 chains intermediate. Set iron post and marked NBT - White Pine 10" S 54° W 81 links and White Birch 7" S 30° E 70-3/4 links.

Description of corner evidence found:
Recovered 1" iron pipe with alloy cap, stamped:
Monument recovered in excellent condition and projects 24" above ground.
Recovered OBT - White Pine 10" (14") S 54° W 81 links,
scribing not legible.
White Birch 7" (8") S 30° E 70.75 links,
scribing not legible.
T37N R9E
NW 1/16
S 34
RIFCO

Description of monument and accessories I established to perpetuate the original location of this corner. As monument was recovered in excellent condition, it was left in place. No other accessories established.

Dated at **Rhineland**, Wis., this **18th** day of **March**, 19**77**.

Signature: *Phillip T. Hansen* Title: **Registered Land Surveyor** Registration No. **S-498**
(County Surveyor, Registered Land Surveyor, or other duly authorized official)

Office of Register of Deeds, County of **Oneida**
Instrument was filed in this office for record on the **23rd** day of **March**, 19**77**
at **3:00** o'clock **P.** M.

Doris Verge Kuehn
(Register of Deeds)

By: _____ Deputy

370934 3030