

U.S. PUBLIC LAND SURVEY MONUMENT RECORD

REGISTER OF DEEDS OFFICE
ONEIDA COUNTY
FILED

JUN 08 2017

Note: This form is intended and designed to fulfill all requirements of the Wisconsin Administrative Code, Chapter A-E 7.08 U.S. Public Land Monument Record (3)(a)(b)(c)(d)(e)(f)(g)(h)(i). An additional sheet may be added if necessary to conform with said requirements.

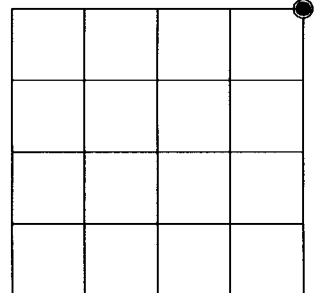
(a) CORNER LOCATION:
Northeast Corner of Section 2
Township 36 North
Range 9 East
Town of Pelican
County of Oneida

WISCRS - Oneida County
North: 167254.530 USft
East: 286210.838 USft
Latitude: 45° 38' 40.40028" N
Longitude: 89° 19' 28.86751" W
Datum: NAD 83(2011)
GNSS Method: RTK - Direct
GNSS Control: WISCRS VRS
Record North: 167254.681 USft
Record East: 286210.869 USft
Record Datum: NAD 83(1991)

AT _____ O'CLOCK _____ M
KYLE J. FRANKSON
REGISTER OF DEEDS

(RECORDING AREA)

SECTION 2



(b) HISTORY OF ORIGINAL CORNER ESTABLISHMENT

Original Surveyor: Hiram C. Fellows
Date of Survey: July 12, 1859

Original B.T.'S: Tamarack 9" N 4°W 20 lks. Tamarack 6" N 75°E 17 lks.
Tamarack 6" S 55°W 15 lks. Tamarack 9" S 62°E 3 lks.

(f)(g)(h) DESCRIPTION OF MONUMENT FOUND AT THIS CORNER AND IF IT WAS ACCEPTED, STATE ALL EVIDENCE (MATERIAL, TESTIMONIAL, OCCUPATIONAL, PLATS, RECORD, OTHER MONUMENTS) USED AS A BASIS FOR ESTABLISHING LOCATION. IF NOT ACCEPTED OR IF NOTHING WAS FOUND, STATE EVIDENCE USED AS BASIS FOR ESTABLISHING LOCATION. IF REESTABLISHED THROUGH LOST CORNER PROPORTIONATE METHODS, INDICATE ALL MONUMENTS, DISTANCES AND DIRECTIONS USED TO ESTABLISH. INDICATE TYPE OF MONUMENT AND SIGN POST FOUND OR SET.

June 1903 - D.H. Vaughan, County Surveyor (Old Field Book 4, pages 32-37 and also Dorr-Vaughan Book, page 235, for a survey in Section 35, T37N, R9E) "went to SE Corner set ne Post from 3 org. BT.

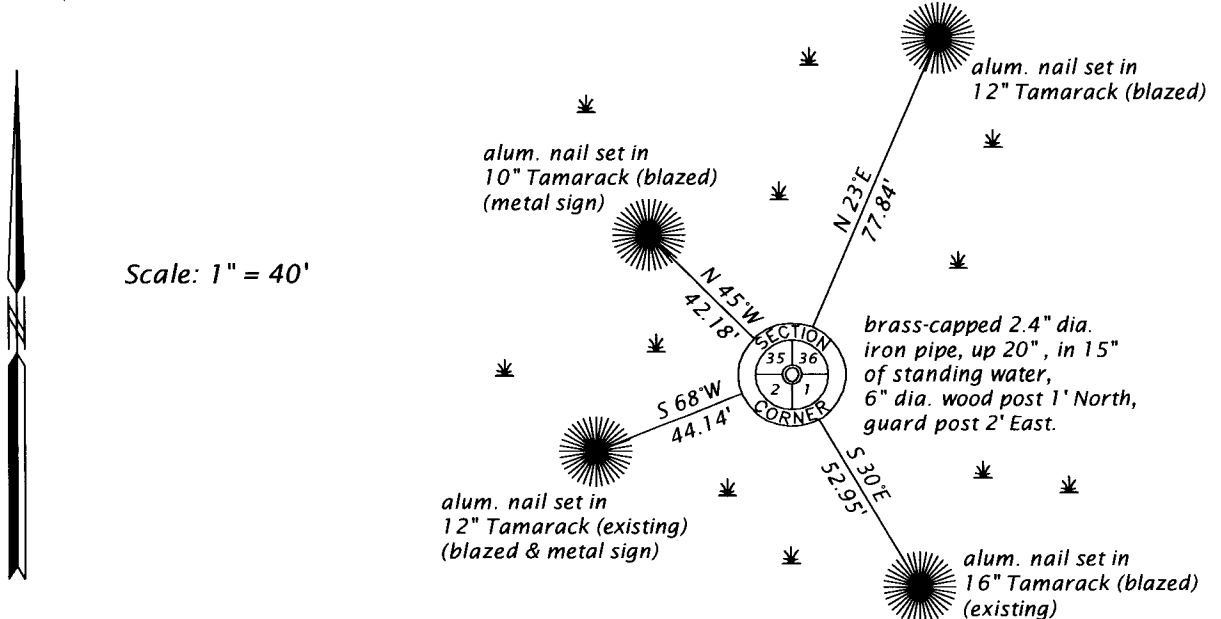
November 2 & 3, 1941 - V. M. Maine, County Surveyor (Maine Book 1941, pages 150-152) recovered "Orig. Gov. Cor. 1, 2, 35, 36 identified by one Orig. B.T. down but marks plan viz; others all gone ? logging road & blasted out. Found D.H.V. post offset on South side of Log Road"

January 8, 1968, F. R. Wincentsen, RLS No. 155 (Wincentsen Book pages 67-68 and Genisot Engineering Co. Dwg. No. 2723 for a survey in Section 2, T36N, R9E) describes the corner monumented by "iron pipe (in place)

(CONTINUED ON REVERSE PAGE)

The coordinate value shown has been verified by at least one of the following methods: 1) comparison to a previously GPS determined published value; 2) the value is the average of two or more GPS observations at a markedly different time; 3) one or more distances were measured back to the GPS observed corner from temporary GPS observed offset locations.

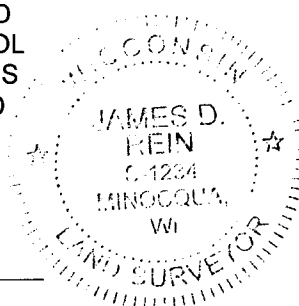
(c)(d)(e) PLAN VIEW OF CORNER WITH TIES TO AT LEAST 4 WITNESS MONUMENTS. IF IN DISAGREEMENT WITH PREVIOUSLY ESTABLISHED CORNER, SHOW THE DISTANCE BETWEEN THE TWO CORNERS AND ALSO INDICATE THE TIES TO THE DISPUTED CORNER.



(i) I, JAMES D. REIN, PROFESSIONAL LAND SURVEYOR NO. S-1234 HEREBY CERTIFY THAT THE CORNER LOCATION ON THIS RECORD WAS DETERMINED BY ME OR UNDER MY DIRECTION AND CONTROL AND THAT THIS U.S. PUBLIC LAND SURVEY MONUMENT RECORD IS CORRECT AND COMPLETE TO THE BEST OF MY KNOWLEDGE AND BELIEF.

James D. Rein
SIGNATURE

6-06-17
DATE



INDEX NO. A - 21
3709350000

(CONTINUED FROM REVERSE PAGE)

May 2, 1994 - Russell F. Brown, RLS No. 2148 (Genisot and Associates, Inc. Dwg. No. 9361, filed as B2913 in county surveyor's office) legends this corner "WOOD POST TO BE MONUMENTED BY ROBERT WINAT"

May 18, 2017 - James D. Rein, PLS No. 1234, we recovered a brass capped 2.4" dia. iron pipe stamped correctly to identify the corner including "S-1040", which is Robert H. Winat's license number. An old rotted 6" dia. wood was found 1 foot north of the monument. I accept this monument as a perpetuation of the original corner position and we made reference ties as shown in the plan.