

U.S. PUBLIC LAND SURVEY MONUMENT RECORD

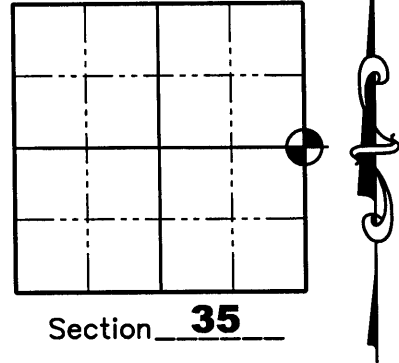
NOTE: This form is intended and designed to fulfill all requirements of Wisconsin Administrative Code, Chapter A-E 7 .08 U.S. Public Land Survey Monument Record (3)(a)(b)(c)(d)(e)(f)(g)(h)(i). An additional sheet may be added if necessary to conform with said requirements.

(a) Corner location: Township 37 North

Range 9 East

Town of Pine Lake

County of Oneida



Section 35

(b)(f)(g)(h) Description of monument found at this corner and if it was accepted, state all evidence (material, testimonial, occupation, plats, records, other monuments) used as a basis for accepting. If not accepted or if nothing was found, state evidence used as a basis for establishing location. If reestablished through lost corner proportionate methods, indicate all monuments, distances and directions used to establish. Indicate type of monument found or set and sign post.

1863— William Daugherty established corner and set a wood post and BTs; Maple 8", N52W, 38 lks. Tamarack 8", S78E, 23lks.

Unknown Date— Iron Pipe placed in road and made Tamarack BT, North, 67.79'.

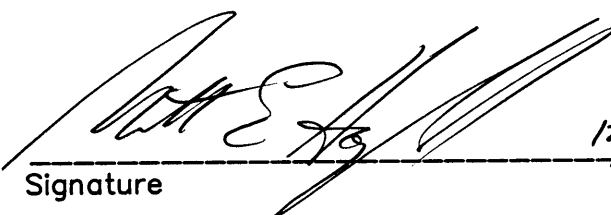
August 2, 1989— Milo E. Stefan accepted the iron pipe and BT to be the perpetuated position of the original corner. He said that highway construction had destroyed all other evidence. He set railroad spike in surface of road above the found iron pipe. He set BT's as follows: Red Pine 6", S39E, 63.36'; Red Pine 13", S5W, 53.98'; Black Ash 8', N12W, 53.23'; Tamarack 10", North, 67.79'; Plastic Sign Post, S7E, 50.40'.

May 22, 1978 — William Immich found a Railroad Spike per Oneida County Land Information Map Number B-1968.

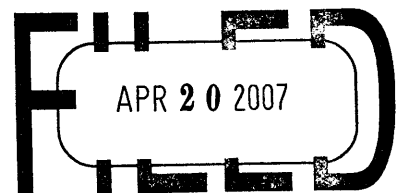
July 23, 1989 — Russell F. Brown found a Railroad Spike per Oneida County Land Information Map Map Number B-4026.

November 3, 2006— Matthew E. Hoglund, R.L.S. S-1910, found a P.K. nail in the centerline of Highway "C" along with 3 bearing trees from Milo Stefan. The P.K. nail didn't match the existing bearing trees and when we swing the distances from the bearing trees, they don't come up with a good intersection. We removed the P.K. nail and dug for any evidence of the railroad spike or the iron pipe. We recovered a disturbed railroad spike laying on its side about 1 foot below the road surface. We then tied a couple of corners from an existing survey to the East dated May 22, 1978 (O.C.L.I.O. Map Number B-1968.) and a couple of corners from an existing survey to the West dated July 23, 1989 (O.C.L.I.O. Map Number B-4026.) We reestablished the corner from the 2 existing surveys and used 2 of the existing bearing trees. We set a railroad spike and set new witness corners as shown on Sheet 2 hereof.

I, Matthew E. Hoglund, certify that the corner location on this record was determined by me under my direction and control and that this U.S. Public Land Survey Monument is correct and complete to the best of my knowledge and belief.


 Signature _____ Date 12/21/06 M.H.

REGISTER OF DEEDS OFFICE
ONEIDA COUNTY, WIS.

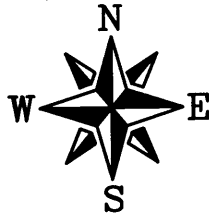


At _____ O'Clock _____ M
THOMAS H. LEIGHTON
 REGISTER OF DEEDS

Sheet 1 of 2
 Proj. #719

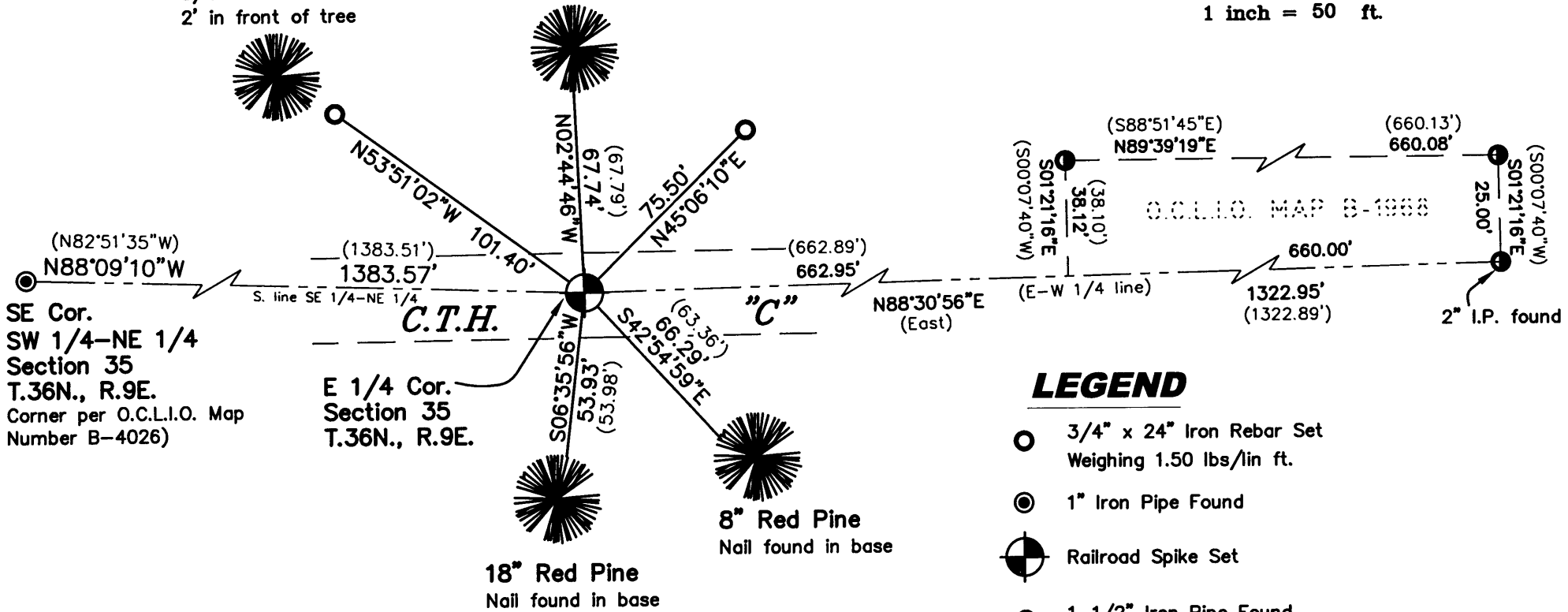
3709352000

U.S. PUBLIC LAND SURVEY MONUMENT RECORD



36" White Pine
3/4" Iron rebar set
2' in front of tree

16" Tamarack
Nail found in base



The existing PK nail that was removed during the corner search was at a position North 81°49'32" East, 1.37' from the re-established East 1/4 Corner position.

LEGEND

- 3/4" x 24" Iron Rebar Set Weighing 1.50 lbs/lin ft.
- ⊙ 1" Iron Pipe Found
- ⊕ Railroad Spike Set
- 1-1/2" Iron Pipe Found Unless otherwise noted

(46.57') Record Dimensions

Sheet 2 of 2
Proj. #719

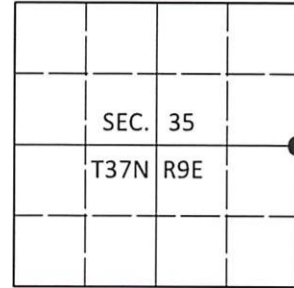
3709352000

U.S. PUBLIC LAND SURVEY MONUMENT RECORD

Note: This form is intended and designed to fulfill all requirements of Wisconsin Administrative Code, Chapter A-E 7.08 U.S. Public Land Survey Monument Record (3)(a-i).

(a) CORNER LOCATION
 1/4 Cor. of Secs. 35 & 36
 Township 37 North
 Range 9 East of the 4th P.M.
 Town of Pine Lake
 County of Oneida

WISCRS - Oneida County
 N: 169,902.91 USft
 E: 286,153.96 USft
 Datum: NAD 83(2011)
 GNSS Method: RTN - Offset
 GNSS Control: WISCORS VRS



(b) HISTORY OF ORIGINAL CORNER ESTABLISHMENT

Original Surveyor:

Original Accessories:

Date of Survey Commenced:
 Completed:

See previous monument record(s)

(b)(f)(g)(h) Description of monument found at this corner and if it was accepted, state all evidence (material, testimonial, occupational, plats, records, other monuments) used as a basis for accepting. If not accepted or if nothing was found, state evidence used as basis for establishing location. If re-established through lost corner proportionate methods, indicate all monuments, distances and directions used to establish. Indicate type of monument and sign post found or set.

This is a perpetuation of the following monument record(s) that comprise a complete history of the corner:

Dec. 21, 2006: USPLS Monument Record No. 3709352000 by Matthew E. Hoglund, PLS

July 24, 2020: I found and accepted the record monument, a railroad spike in the centerline of County Highway "C". I found or established accessories as shown below. I found a white vinyl sign post bearing S9°E, 50 ft.

Sep. 8, 2020: I set a Berntsen "survey mark" nail at the corner point in the new pavement centerline.

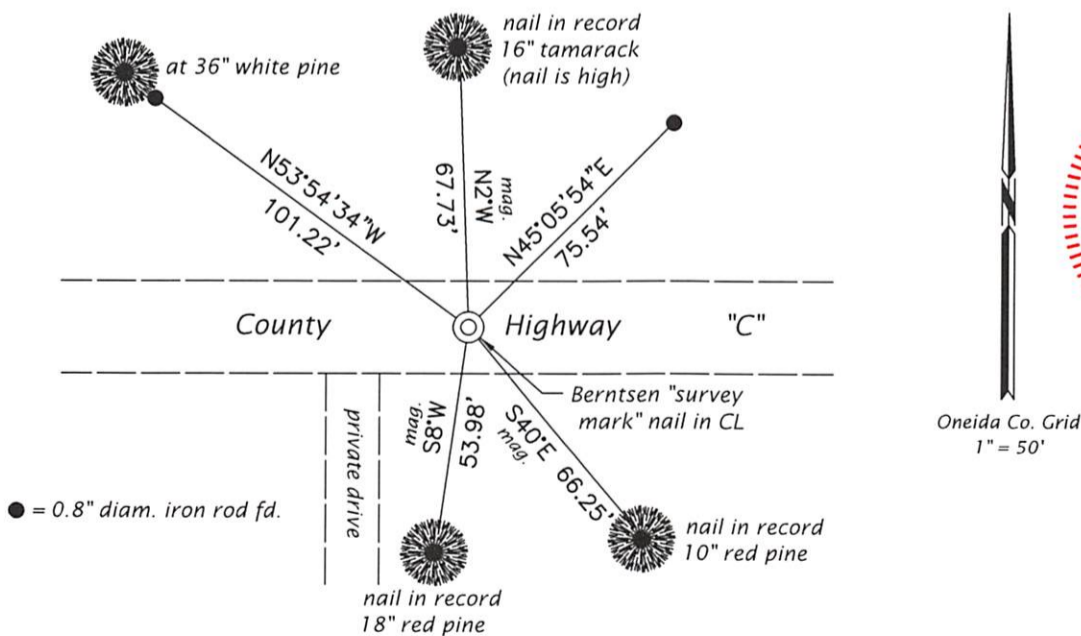
The coordinate value shown has been verified by at least one of the following methods: 1) comparison to a previously GPS determined published value; 2) the value is the average of two or more GPS observations at a markedly different time; 3) one or more distances were measured back to the GPS observed corner from temporary GPS observed offset locations.

REGISTER OF DEEDS OFFICE
 ONEIDA COUNTY
 FILED

JAN 13 2021

KYLE J. FRANSON
 REGISTER OF DEEDS

(c)(d)(e) Plan view of corner with ties to at least 4 witness monuments. If in disagreement with previously established corner, show the distances between the two corners and also indicate the ties to the disputed.



(i) I, Jeffrey W. Austin, Professional Land Surveyor No. S-1885, hereby certify that the corner location on this record was determined by me or under my direction and control and that this U.S. Public Land Survey Monument Record is correct and complete to the best of my knowledge and belief.

[Handwritten Signature]
 Signature

15 DEC 2020
 Date