

U.S. PUBLIC LAND SURVEY MONUMENT RECORD

NOTE: This form is intended and designed to fulfill all requirements of Wisconsin Administrative Code, Chapter A-E 7 .08 U.S. Public Land Survey Monument Record (3)(a)(b)(c)(d)(e)(f)(g)(h)(i). An additional sheet may be added if necessary to conform with said requirements.

(a) Corner location: Township 36 North

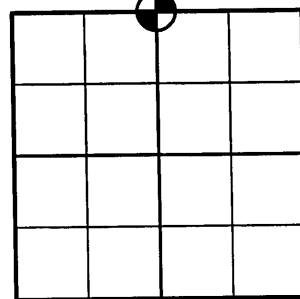
Range 09 East

Town of PELICAN

County of ONEIDA

Oneida County Coordinates Northing 167208.871
 Easting 288874.944

Project # 496



Section 1



(b)(f)(g)(h) Description of monument found at this corner and if it was accepted, state all evidence (material, testimonial, occupation, plats, records, other monuments) used as a basis for accepting. If not accepted or if nothing was found, state evidence used as a basis for establishing location. If reestablished through lost corner proportionate methods, indicate all monuments, distances and directions used to establish. Indicate type of monument found or set and sign post.

1863 - Original survey by William E. Daughtery set 1/4 post with bearing trees: 9" tamarac N9°W, 31 links, 12" tamarac S78°E 15 links.

1903 - Survey by D.H. Vaughan set a new post from one original bearing tree (down) stood it up and took bearing and distance. Found existing post 4' SW from set post, also found East stump of bearing tree and it agreed fairly well with notes.

5-14-1975 - Sy M. Poskie shows an existing iron pipe at this corner per Plat of Survey with an Oneida County Land Information Office Map Number of B-1863.

12-8-2003 - Matthew E. Hoglund, R.L.S. S-1910, searched and found an old wood post with a 1-1/2" iron pipe next to it. We doubled over from an iron pipe at the 40 corner to the East, per Sy. M. Poskie dated May 14, 1975, O.C.L.I.O. Map Number B-1863, and this position falls 2.33' East and 3.37' South of the found wood post. We also measured from the wood post, South, to the meander corner on Lake Thompson and this distance only differs from a 1959 Genisot Survey (O.C.L.I.O. Map Number B-1291) by 2.02'. We accepted the wood post and set a 2-1/2" aluminum capped Oneida County monument and set 4 new bearing trees as shown below. Oneida County coordinates determined from total station traverse from GPS pair surveyed by Jeff Anderson R.L.S.

(c)(d)(e) Plan view of corner with ties to at least 4 witness monuments. If in disagreement with previously established corner, show the distances between the two corners and also indicate the ties to the disputed corner.

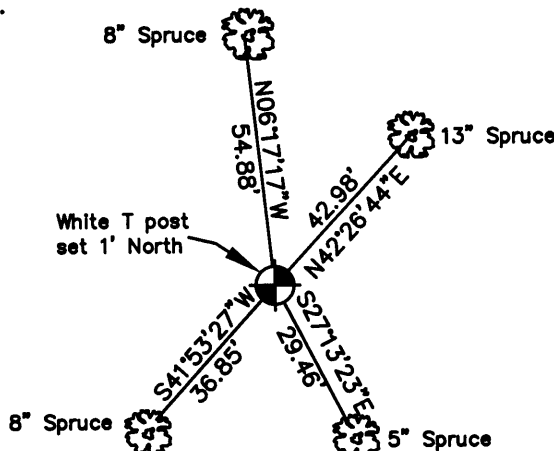
LEGEND



NOTES:

1. All distances are to 60 D nail in base of blazed trees; also all trees have a BT sign on them.

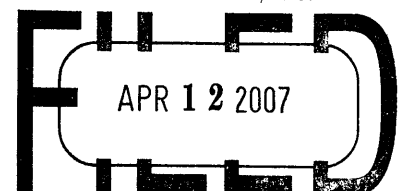
2. Drawing is not to scale



(i) I, Matthew E. Hoglund, certify that the corner location on this record was determined by me under my direction and control and that this U.S. Public Land Survey Monument is correct and complete to the best of my knowledge and belief.

Signature Matthew E. Hoglund Date 3/1/2005

REGISTER OF DEEDS OFFICE
ONEIDA COUNTY, WIS.



At _____ O'Clock _____ M
THOMAS H. LEIGHTON
 REGISTER OF DEEDS

3709360020

GPS Survey Coordinates

Oneida County Coordinates were determined by Jeff Anderson, RLS of Favorite, Anderson and Maine Surveying, S.C. by GPS methods under sub-contract to Nicolet Surveyors, Inc. for this project. The HARN station - OCID # 219S and the Azimuth Mark for this station – OCID # 219AZ were used as the base stations for the GPS control in setting the coordinate pairs used for this corner's location. As a check the Northeast Corner of Section 1 was surveyed during the same GPS session and the coordinates matched to 0.008' in the Northing and 0.005' in the Easting from the published Oneida County coordinates.

A closed traverse from the GPS coordinate pair was performed to obtain the final coordinates of the set monument at the North $\frac{1}{4}$ corner.