

This form is intended to fulfill the requirements of Chapter A-E 7.08 (3)(a) thru (i) U.S. Public Land Survey Monument Location Record, Wisconsin Administrative Code. Use the reverse side of form for continuation.

**U.S. PUBLIC LAND SURVEY MONUMENT LOCATION RECORD**

Recorders Data

USPLS CORNER: WIT.MC TO E AST 1/4 SECTION: 36 TOWNSHIP: 37 NORTH RANGE: 09 EAST

NAME OF WATERWAY FOR M.C. CORNER : THIRD LAKE SECTION LINE: EW C1/4

(CITY)(VILLAGE)(TOWN) OF: PINE LAKE COUNTY OF: ONEIDA

Description of monument found or placed and all other evidence used as the basis for monument location; including monuments and related measurements required if the corner location was reestablished by lost corner proportionate methods. Also indicate name of original surveyor, original survey date and the corner monument, bearing trees, witness or other reference monuments established; including measured bearing and distance ties, from available records.

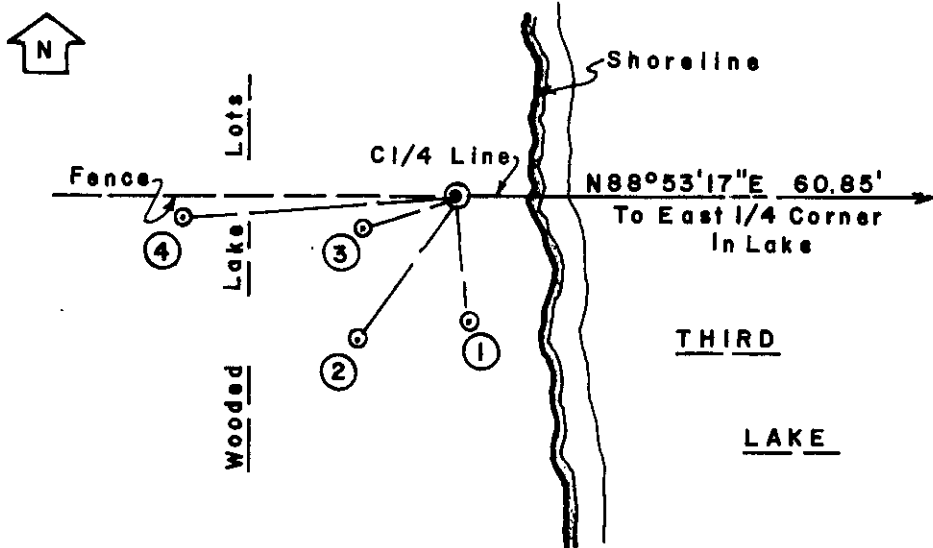
NO ORIGINAL GLO SURVEY NOTES APPLY AS THIS WITNESS MC CORNER WAS ESTABLISHED BY SUBSEQUENT RECORD SURVEYS THAT REFERENCE THE LOCATION OF THE EAST 1/4 OF SECTION 36 WHICH FALLS IN THIRD LAKE; THEREFORE, THIS RECOVERY WAS APPROVED BY ONEIDA COUNTY SURVEYOR MICHAEL ROMPORTL UPON MY QUERY AT HIS OFFICE.

In 1976, Harold W. Behm/RLS 1221 found and accepted a 1" dia. iron bolt at this corner as a witness corner to East 1/4 corner of Section 36 in Third Lake at N88°53'17"E 60.85' per Plat of Survey C-315 in Oneida County survey records. He does not note the iron pipe 10" East of the iron bolt ; both found this date. I left iron bolt in place and drove a standard 2" dia. by 30" long aluminum pipe monument with split bottom end and stamped Oneida County cap to 11" above grade. An older woven wire fence with steel posts leads West of this corner location and existing lake shoreline is 7.5' East this date.

Due to the extensive sectional subdivision control survey by Behm per latter plat of survey, I have accepted the 1" dia. domed head iron bolt found this date as the Witness MC corner to the East 1/4 corner of Section 36 in Third Lake, but I have also indicated my measured tie distances, in parenthesis ( ) below, to the uncapped top center of disturbed 1.5" dia. galvanized iron pipe found 10" East of the old iron bolt; undoubtedly the same iron pipe noted by Poskie per 1976 Plat of Survey A-474 and 1977 Plat of Survey L-906 in Oneida County survey records.

This recovery completed September 12, 2001 and witnessed by adjoining owner Joe Ohman at Fire No. 3752 and by adjoining resident G. Dorothy Bronson at Fire No. 3744, Limberlost Road.

Plan view map of monument location with bearing and distance ties to a minimum of four(4) described witness or reference monuments of concrete, natural stone, iron, live bearing trees or equivalent material. If applicable, also show a minimum of two(2) bearing and distance ties to any other monument found and not accepted; including the bearing and distance from the accepted monument.



**WITNESS MONUMENT TIES:**

- ① New BT 9" Mr S06°E at 13.45'; (13.30') to iron pipe found.
- ② New BT 9.5" Bw S34°W 18.18'; (18.60') to iron pipe found.
- ③ New BT 18" Or S71°W 10.25'; (11.07') to iron pipe found.
- ④ New BT 10" Or S85°W 28.37'; (29.23') to iron pipe found.

Standard white poly 'T' corner marker post set 12" East of corner monument and 2" East of iron pipe found.

No older BTs observed nearby.

SCALE: 1" = 20'

Unless otherwise indicated, all bearing tree ties are to a .25" dia. by 2.5" long PK nail with a 1.25" dia. steel washer driven into unblazed right face and a .25" dia. by 2.5" long PK nail with a 2" dia. steel washer stamped BT is also driven into unblazed face of bearing tree at DBH; the basis for measured bearings is by compass to nearest degree and all tie distances are measured horizontal by steel tape corrected to nearest 1/100th feet at standard temperature of 68° F.

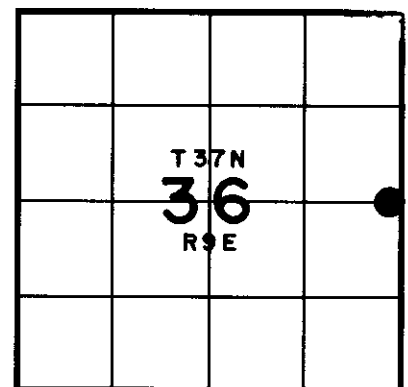
RLS SEAL:



LAND SURVEYOR CERTIFICATE:

I, William C. Rohde, hereby certify that I am duly licensed as a Professional Land Surveyor in the State of Wisconsin; that this USPLS monument location was determined by me and/or under my direct supervision and control; and that this U.S. Public Land Survey Monument Location Record is true and correct to the best of my knowledge and belief.

Signed: *William C. Rohde*  
William C. Rohde RLS 841



SECTION LOCATION MAP

INDEX NO. X 24 25