

CERTIFIED LAND CORNER RESTORATION

Index No. E-1

State of Wisconsin }
County of Oneida } ss.

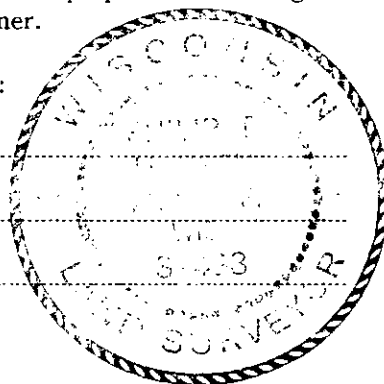
I, Philip T. Hansen, do hereby certify that on the 10th day of September, 1976, I found evidence of the section corner of Sec. 1-6, 12, 7 Township 37N, North, Range 10-11 East, Fourth Principal Meridian, as described hereon; and that from this evidence I established a new monument and accessories as described hereon to perpetuate the original location of this corner.

Resident witnesses:

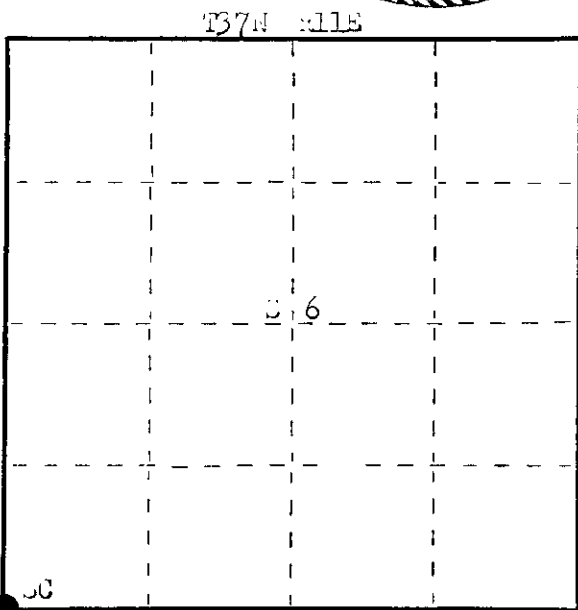
Shen

Jim Staffin

Harold Jensen



FORM 983 H. C. MILLER CO., MILWAUKEE



○ = Corner monument restored.

History of original corner establishment:

Original corner established by Wm. C. Fellows, Deputy Surveyor, in 1857, from which Cedar 12" bears S 22° W 23 links, Birch 10" bears N 71° E 24 links, Cedar 12" bears N 24° E 15 links and Ash 12" bears S 1° E 31 links.

Corner recovered and restored by V. J. Meine, County Surveyor, in 1930. Recovered original BTs - Cedar 12" N 24°, 15 links (down) and Ash 12" S 1° E 31 links. Set iron pipe with brass cap.

Corner recovered by H. O. Lawrence, Registered Land Surveyor, in 1958. Recovered Meine's iron pipe in good condition. Set 4" cedar post, marked BTs - Cedar stamp 14" N 5' E 20° E 33 links and Maple 9" S 80° W 32 links.

Description of corner evidence found:

Recovered V. J. Meine's 1 1/2" iron pipe with brass cap, in excellent condition. Also found Lawrence's cedar post 1 link south.

Recovered BTs - Cedar stamp 14" N 5' E 20° E 33 links, scribed 30 BT.

Maple 9" S 80° W 32.5 links, tree not scribed.

Lawrence's post and setting to Meine's iron pipe.

Also Meine's pipe 14" S 51° E 33 links, scribing visible, timber grown.

Description of monument and accessories I established to perpetuate the original location of this corner.

Because of the good condition of Meine's iron pipe, it was left as found, but painted blue. BTs - Cedar 14" N 5' E 20° E 31 links, scribed 30 BT.

Maple 9" S 80° E 32.5 links.

Maple 9" S 81° E 32.5 links.

Left Lawrence's post standing beside Meine's pipe.

All BTs painted blue.

Dated at Wainelander, Wis., this 21st day of September, 1976.

Signature Philip T. Hansen Title Registered Land Surveyor Registration No. 2-428
(County Surveyor, Registered Land Surveyor, or other duly authorized official)

Office of Register of Deeds, County of Oneida. I hereby certify that the within instrument was filed in this office for record on the 9th day of November, 1976 at 10:30 o'clock A M.

Louis Verage Kuehn
(Register of Deeds)

By..... Deputy

371010000

U.S. PUBLIC LAND SURVEY MONUMENT RECORD

REGISTER OF DEEDS OFFICE
ONEIDA COUNTY
FILED

FEB 17 2022

KYLE J. FRANSON
REGISTER OF DEEDS

Note: This form is intended and designed to fulfill all requirements of the Wisconsin Administrative Code, Chapter A-E 7.08 U.S. Public Land Monument Record (3)(a)(b)(c)(d)(e)(f)(g)(h)(i). An additional sheet may be added if necessary to conform with said requirements.

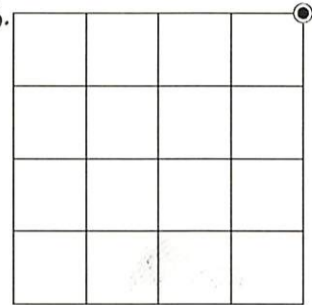
(a) CORNER LOCATION:

Northeast Corner of Section 12
Township 37 North
Range 10 East
Town of Stella
County of Oneida

North:
East:
Datum:
GNSS Method:
GNSS Control:

(RECORDING AREA)

SECTION 12



(b) HISTORY OF ORIGINAL CORNER ESTABLISHMENT

Original Surveyor:
Date of Survey: Commenced
Completed
Original B.T.'S

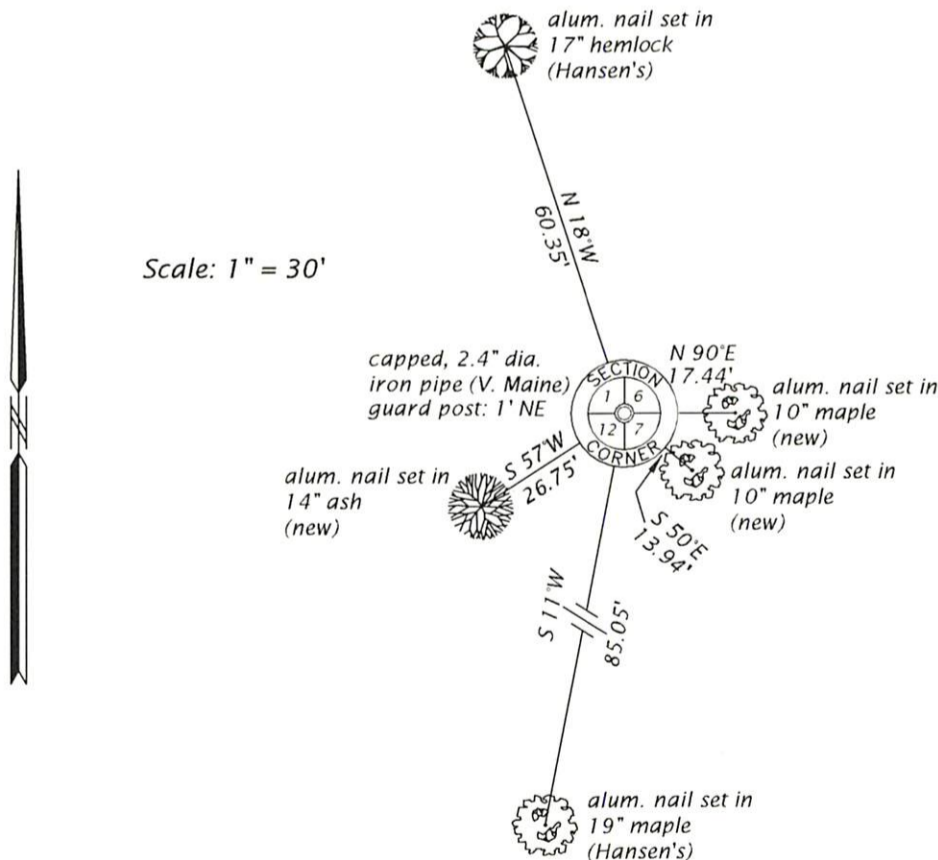
SEE PREVIOUS U.S.P.L.S. MONUMENT
RECORD DATED SEPTEMBER 21, 1976.

(f)(g)(h) DESCRIPTION OF MONUMENT FOUND AT THIS CORNER AND IF IT WAS ACCEPTED, STATE ALL EVIDENCE (MATERIAL, TESTIMONIAL, OCCUPATIONAL, PLATS, RECORD, OTHER MONUMENTS) USED AS A BASIS FOR ESTABLISHING LOCATION. IF NOT ACCEPTED OR IF NOTHING WAS FOUND, STATE EVIDENCE USED AS BASIS FOR ESTABLISHING LOCATION. IF REESTABLISHED THROUGH LOST CORNER PROPORTIONATE METHODS, INDICATE ALL MONUMENTS, DISTANCES AND DIRECTIONS USED TO ESTABLISH. INDICATE TYPE OF MONUMENT AND SIGN POST FOUND OR SET.

This is a perpetuation of a previous U.S.P.L.S. Monument Record by Philip T. Hansen, RLS, dated September 21, 1976, and filed in the office of the Oneida County Register of Deeds. A complete history of the corner can be found on the previous monument record. I accept the previous location as a true and faithful perpetuation or reestablishment of the original corner location and further perpetuate it as follows.

January 11, 2022, we found and I accepted V. Maine's capped, 2.4" dia. iron pipe, up 14", as shown on the previous monument record by Hansen. We also recovered Hansen's northwesterly hemlock and southwesterly maple bearing trees. See below for updated witnesses.

(c)(d)(e) PLAN VIEW OF CORNER WITH TIES TO AT LEAST 4 WITNESS MONUMENTS. IF IN DISAGREEMENT WITH PREVIOUSLY ESTABLISHED CORNER, SHOW THE DISTANCE BETWEEN THE TWO CORNERS AND ALSO INDICATE THE TIES TO THE DISPUTED CORNER.



(i) I, JAMES D. REIN, PROFESSIONAL LAND SURVEYOR NO. S-1234 HEREBY CERTIFY THAT THE CORNER LOCATION ON THIS RECORD WAS DETERMINED BY ME OR UNDER MY DIRECTION AND CONTROL AND THAT THIS U.S. PUBLIC LAND SURVEY MONUMENT RECORD IS CORRECT AND COMPLETE TO THE BEST OF MY KNOWLEDGE AND BELIEF.

James D. Rein
SIGNATURE

2-09-22
DATE



INDEX NO. E - 25
371001000