

This form is intended to fulfill the requirements of Chapter A-E 7.08 (3)(a) thru (l) U.S. Public Land Survey Monument Location Record, Wisconsin Administrative Code. Use the reverse side of form for continuation.

U.S. PUBLIC LAND SURVEY MONUMENT LOCATION RECORD

USPLS CORNER: East M.C. SECTION: 12 TOWNSHIP: 37 NORTH RANGE: 10 East
 NAME OF WATERWAY FOR M.C. CORNER: Stella Lake SECTION LINE: North Line
 (CITY)(VILLAGE)(TOWN) OF: Town of Stella COUNTY OF: Oneida

Description of monument found or placed and all other evidence used as the basis for monument location; including monuments and related measurements required if the corner location was reestablished by lost corner proportionate methods. Also indicate name of original surveyor, original survey date and the corner monument, bearing trees, witness or other reference monuments established; including measured bearing and distance ties, from available records.

Found and accepted a standard stamped GLO/BLM brass cap/tablet set in the top of a concrete filled 5.25" O.D. clay pipe 22" above grade, which is tipped slightly West but very stable, so I accepted top cap center for new ties. Also set a standard white poly 'T' marker post S60°W 6" from the MC monument which is 13.5'+ SE of existing shoreline of Stella Lake.

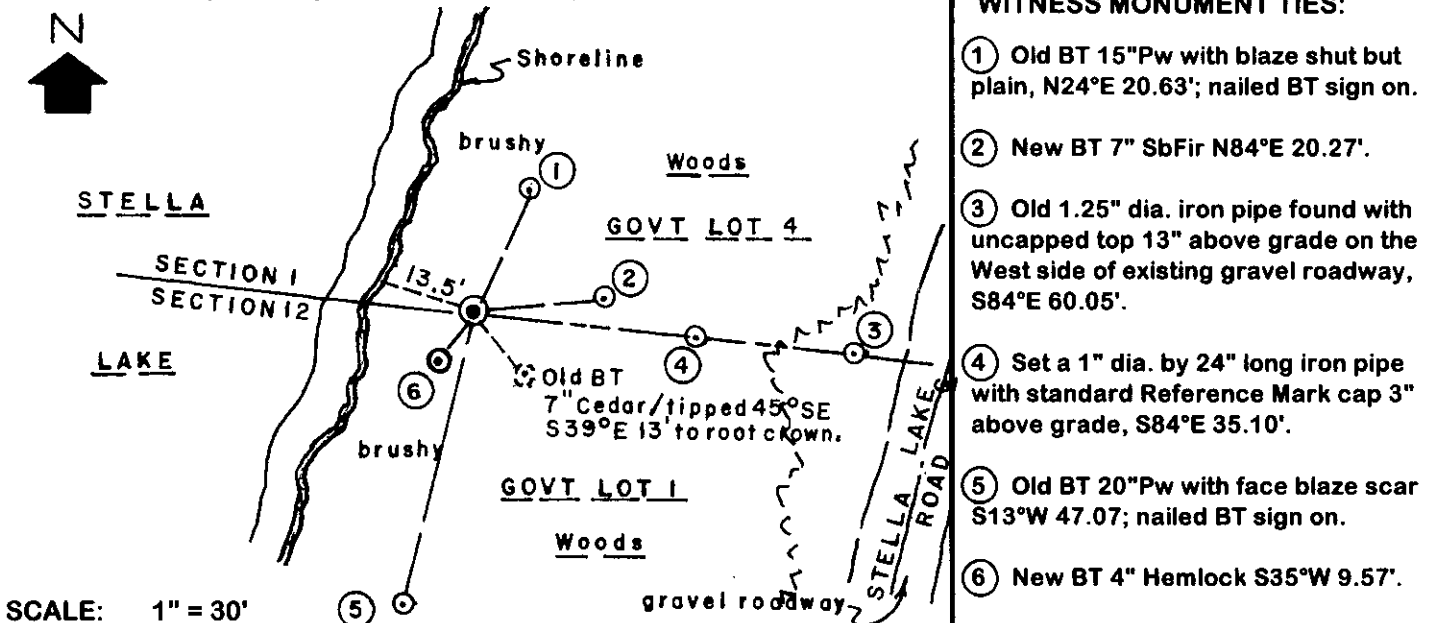
In August 1863, William E. Daugherty/GLO set a wood post as the original corner and marked OBTs: a 12" Cedar N18°E 24 links and a 10" Tamarack S53°E 12 links, which are all now obliterated.

In September 1959, Hugh B. Crawford/BLM set subject monument as the MC during his resurvey of omitted lands in Section 12 South of Stella Lake, per BLM Plat of Survey filed as B-1730 in Oneida County survey records; no copy of the related BLM resurvey field notes are available in said Oneida Co. records.

In 1967, Joseph C. Kirby, RLS 253, found and accepted subject BLM monument as the MC per Plat of Survey filed as B-1382 in Oneida County survey records.

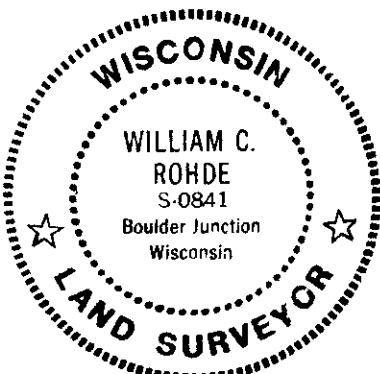
This recovery completed July 27, 1999 and witnessed by Edith Franson, adjoining landowner at Fire No. 1949 Stella Lake Road.

Plan view map of monument location with bearing and distance ties to a minimum of four(4) described witness or reference monuments of concrete, natural stone, iron, live bearing trees or equivalent material. If applicable, also show a minimum of two(2) bearing and distance ties to any other monument found and not accepted; including the bearing and distance from the accepted monument.



Unless otherwise indicated, all bearing tree ties are to a .25" dia. by 2.5" long PK nail with a 1.25" dia. steel washer driven into unblazed right face and a .25" dia. by 2.5" long PK nail with a 2" dia. steel washer stamped BT is also driven into unblazed face of bearing tree at DBH; the basis for measured bearings is by compass to nearest degree and all tie distances are measured horizontal by steel tape corrected to nearest 1/100th feet at standard temperature of 68° F.

RLS SEAL:



LAND SURVEYOR CERTIFICATE:

I, William C. Rohde, hereby certify that I am duly licensed as a Professional Land Surveyor in the State of Wisconsin; that this USPLS monument location was determined by me and/or under my direct supervision and control; and that this U.S. Public Land Survey Monument Location Record is true and correct to the best of my knowledge and belief.

Signed: *William C. Rohde*
 William C. Rohde RLS 841

	T 37N		
	12		
	R10E		

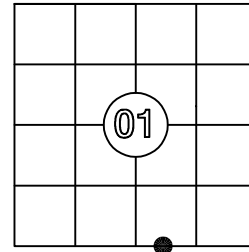
US PUBLIC LAND SURVEY MONUMENT RECORD

Per Wis. Admin. Code § A-E 7.08, a U.S. public land survey monument record shall be prepared and filed with the county survey records as part of any land survey within 60 days of setting or accepting the corner, which includes or requires the perpetuation, restoration, or use of a U.S. public land survey corner and when any of the situations in Wis. Admin. Code § A-E 7.08(1)(a), (b) or (c) arise.

3(a) Corner Identification:
 Found brass BLM disk in a concrete post, 22" high
 Meander Corner
 Section 01
 Township 37 North
 Range 10 East
 4th Principal Meridian
 Town of Stella
 Oneida Co., WI

Offset Coordinates:
 N: 191948.43
 E: 322391.69
 Datum: NAD83(2011)
 GNSS Control: WISCRS NETWORK
 GNSS Method: RTK-Offset Traverse
 Verification Method: 3

CORNER ID:
3710010016



Establishment of Original Corner

Corner Set: Wood Post
 Original Surveyor: Wm. Daugherty
 Date of Survey: August, 1863
 Cedar 12", N 18° E, 24 lks
 Tamarack 10", S 53° E, 12 lks

The coordinate value has been verified by at least one of the following methods:

1. Comparison to a previously determined GNSS determined published value;
2. The value is the average of two or more GNSS observations at markedly different times;
3. One or more distances were measured to the corner from offset GNSS observed locations, set and observed per No. 2 methods.

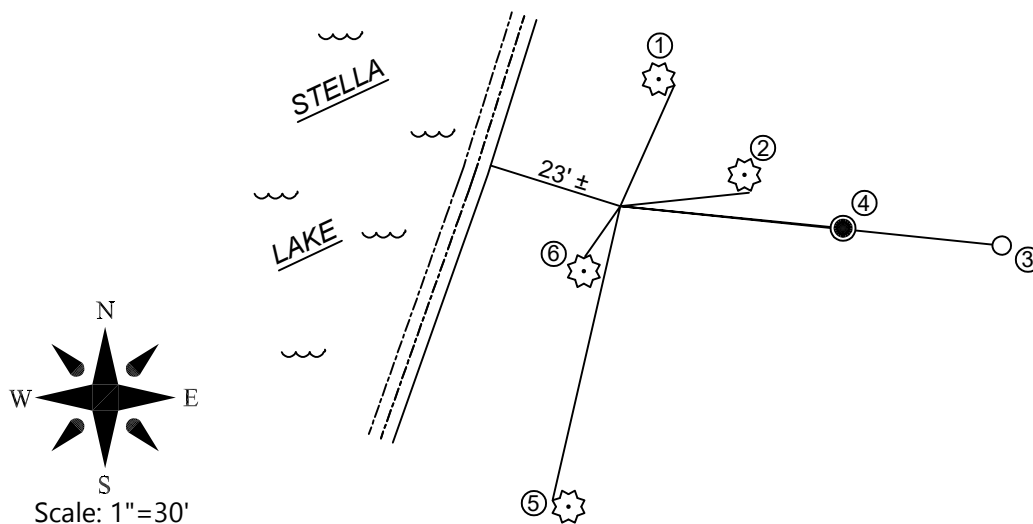
3(b)(c)(d)(f)(g)(h)

This is a continuation of a previous USPLSS Monument Records by Surveyor William Rohde, S-841 (1999).

- 9/6/1999 - William Rohde, S-841, finds and accepts a BLM brass cap set in a concrete post, 22" above grade.
- 8/11/2011 - Kip Soder, S-1731, finds GLO brass cap in a concrete monument/
- 5/16/2016 - Kip Soder, S-1731, find a GLO brass cap in a concrete monument.
- 9/6/2025 - I, Anthony Jones, S-2508, found the BLM brass cap in a concrete post, standing 22" above grade as described by Rohde in 1999. I set two offset nails and made two GPS observations on both with a Carlson NR3 receiver. I also made two GPS observations on the 1 1/4" iron pipe with the "reference mark" cap set by Rodhe in 1999. I turned two angles from the reference pipe to the observed offset points, then to the BLM disk and the 2" iron pipe, found by Rohde. The bearings and distance to the witness trees are shown below.

Witness Monument Ties:

1. Found 22" white pine with an aluminum nail in the side, N 24° E, 20.67'.
2. Found 9" fir with a PK nail/washer, N 84° E, 20.21'.
3. Found 2" iron pipe, S 84°06'28" E, 59.89'.
4. Found 1 1/4" iron pipe with a "Reference Mark" cap, S 84°22'29" E. 34.97'
5. Found 25" white pine with an aluminum nail in the side, S 13° W, 47.00'
6. Found 5" hemlock with a PK nail/washer, S 35° W, 9.60'



Scale: 1"=30'

Bearings: Oneida Co
Coordinate System

3(i) I, Anthony R. Jones, Wisconsin Professional Land Surveyor No S-2508, hereby certify that the corner location shown on this record was determined by me, and that this U.S. Public Land Survey Monument Record is correct and complete to the best of my knowledge and belief.

