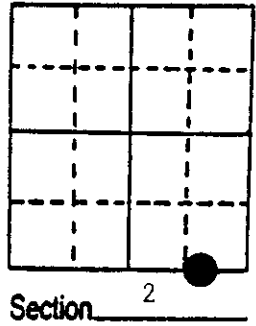


# U.S. PUBLIC LAND SURVEY MONUMENT RECORD

**Note:** This form is intended and designed to fulfill all requirements of Wisconsin Administrative Code, Chapter A-E 7.08 U.S. Public Land Survey Monument Record (3) (a) (b) (c) (d) (e) (f) (g) (h) (i). An additional sheet may be added if necessary to conform with said requirements.

(a) Corner location: Township 37 North  
 Range 10 East/West

Town/City/Village Stella  
 County Oneida



(b) (f) (g) (h) Description of monument found at this corner and if it was accepted, state all evidence (material, testimonial, occupational, plats, records, other monuments) used as a basis for accepting. If not accepted or if nothing was found, state evidence used as basis for establishing location. If reestablished through lost corner proportionate methods, indicate all monuments, distances and directions used to establish. Indicate type of monument found or set and sign post.

1863 - William Daugherty established this corner and set a wood post and BTs:  
 10" Birch, N12°W, 14 Links                      12" Hemlock, S15°E, 10 Links

1932 - Hall called Meander Corner and iron pipe with two BTs:  
 4" Birch, N50°W, 20.9'                      4" Birch, S15°W, 16.2'

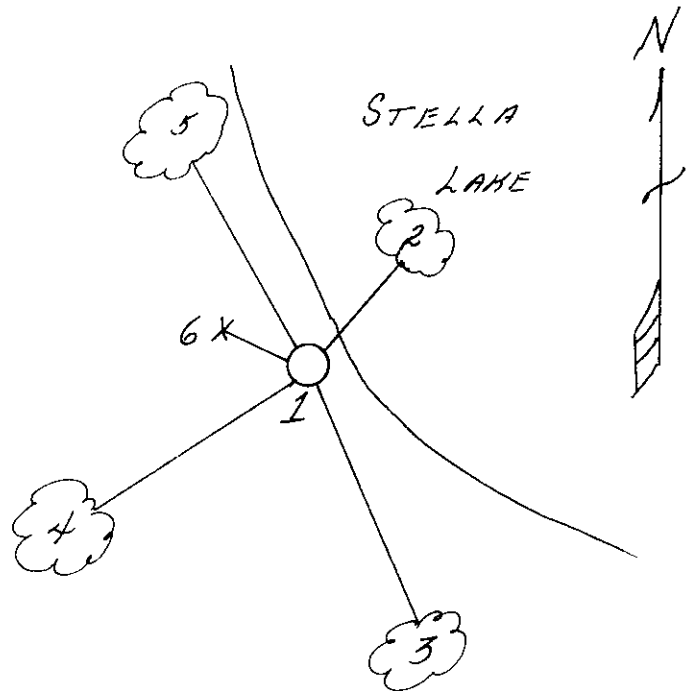
1980 - Wm. Immich called this corner on the plat of "Birch Ridge".

8/2/1989 - Milo E. Stefan found corner marked with a 3" x 24" iron pipe. No evidence of the original survey remains. This is a pipe placed by surveyor Hall in the 1930's. It has been recognized as the Meander Corner for many years. I, therefore, accept this iron pipe as the perpetuated corner position and restore it with an aluminum county monument, making new bearing trees and placement of a plastic sign post.

(c) (d) (e) Plan view of corner with ties to at least 4 witness monuments. If in disagreement with previously established corner, show the distances between the two corners and also indicate the ties to the disputed corner.

- 1) 2" x 30" aluminum Oneida County monument
- 2) 6" Hemlock, N36°E, 5.10'
- 3) 3" Hemlock, S21°E, 9.02'
- 4) 6" White Birch, S42°W, 10.40'
- 5) 8" White Birch, N21°W, 13.48'
- 6) Plastic sign post, NW, .4'

Distance to nail in side of BTs.  
 BTs scribed "BT" in stump blaze.



(i) I, Milo E. Stefan  
 (type or print name) certify that the corner location on this record was determined by me or under my direction and control and that this U.S. Public Land Survey Monument Record is correct and complete to the best of my knowledge and belief.

Milo E. Stefan  
 Signature

8/10/89  
 Date



Index No. 20, 21

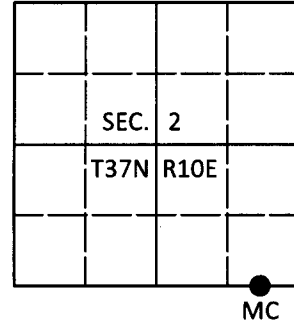
3710020006

# U.S. PUBLIC LAND SURVEY MONUMENT RECORD

Note: This form is intended and designed to fulfill all requirements of Wisconsin Administrative Code, Chapter A-E 7.08 U.S. Public Land Survey Monument Record (3)(a-i).

(a) CORNER LOCATION  
 Meander Cor. of Secs. 2 & 11  
 Township 37 North  
 Range 10 East of the 4th P.M.  
 Town of Stella  
 County of Oneida

WISCORS - Oneida County  
 N: 192,313.02 USft  
 E: 317,610.84 USft  
 Datum: NAD 83(2011)  
 GNSS Method: RTN - Offset  
 GNSS Control: WISCORS VRS



(b) HISTORY OF ORIGINAL CORNER ESTABLISHMENT

Original Surveyor:

Original Accessories:

Date of Survey Commenced:  
 Completed:

See previous USPLS Monument Record

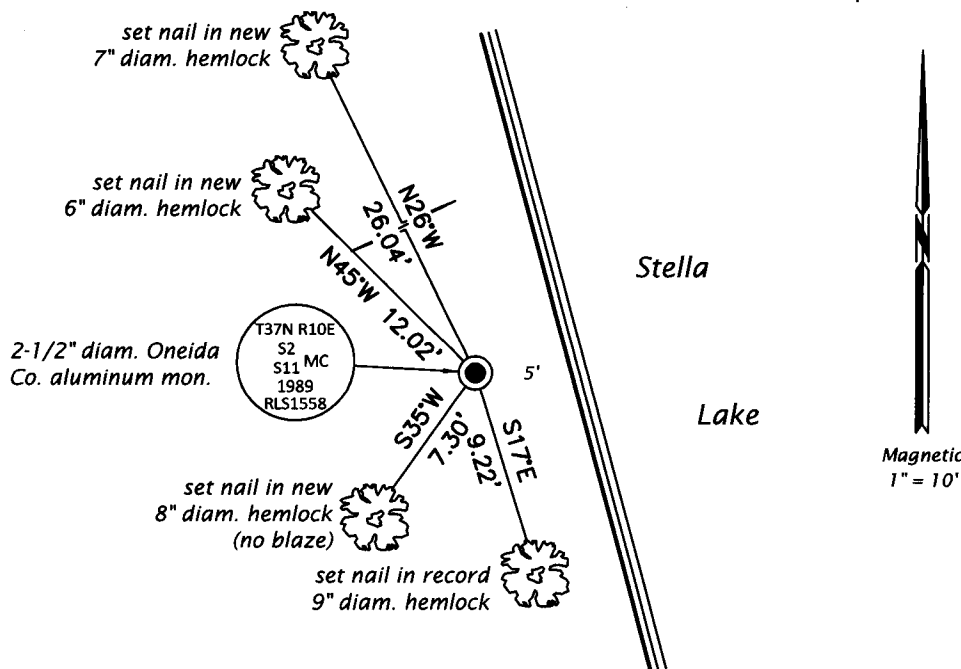
(b)(f)(g)(h) Description of monument found at this corner and if it was accepted, state all evidence (material, testimonial, occupational, plats, records, other monuments) used as a basis for accepting. If not accepted or if nothing was found, state evidence used as basis for establishing location. If re-established through lost corner proportionate methods, indicate all monuments, distances and directions used to establish. Indicate type of monument and sign post found or set.

*This is a perpetuation of a previous USPLS Monument Record by Milo E. Stefan, RLS dated August 10, 1989 and filed in the office of the Oneida County Register of Deeds. A complete history of the corner can be found on the previous monument record. I accept the previous location as a true and faithful perpetuation or reestablishment of the original corner location and further perpetuate it as follows.*

*March 15, 2018: I found and accepted the record monument, a 2-1/2" diam. aluminum pipe with a 3-1/4" diam. Oneida Co. aluminum cap projecting 8" above the ground surface. Record bearing trees 4 and 5 are now stumps, tree 2 is tipping into the lake. I found or established accessories as shown below and found a white vinyl sign post bearing North, 0.3 ft. dist.*

*The coordinate value shown has been verified by at least one of the following methods: 1) comparison to a previously GPS determined published value; 2) the value is the average of two or more GPS observations at a markedly different time; 3) one or more distances were measured back to the GPS observed corner from temporary GPS observed offset locations.*

(c)(d)(e) Plan view of corner with ties to at least 4 witness monuments. If in disagreement with previously established corner, show the distances between the two corners and also indicate the ties to the disputed.



REGISTER OF DEEDS OFFICE  
 ONEIDA COUNTY  
 FILED

APR 12 2018

KYLE J. FRANSON  
 REGISTER OF DEEDS

(i) I, Jeffrey W. Austin, Professional Land Surveyor No. S-1885, hereby certify that the corner location on this record was determined by me or under my direction and control and that this U.S. Public Land Survey Monument Record is correct and complete to the best of my knowledge and belief.

*[Handwritten Signature]*  
 Signature

4 APR 2018  
 Date