

U. S. PUBLIC LAND SURVEY MONUMENT RECORD

INSTRUCTIONS: This record shall show the location of the corner and shall include all of the following nine elements (a through i).

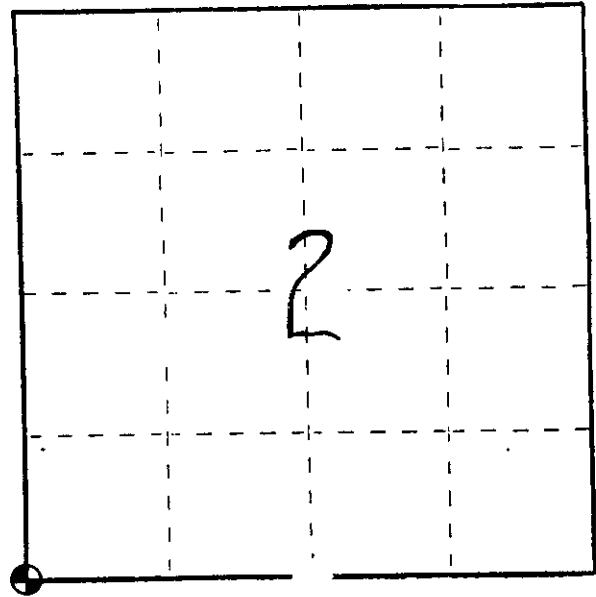
- (a) Identify the corner by reference to the U.S. public land survey system.
 ○ = Corner monument restored.

Township 37 North Range 10 East
 Section Corner Sections 2,3,10,11

Original BT's

Birch 12" S54°W 17 lks
 W/Pine 14" N46°E 7 lks

Compared with all record data and accepted as correct.



Robert H. Nival 18 JAN 84
 On side County Surveyor date

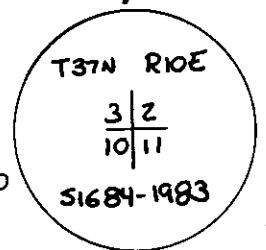
- (b) Describe any record evidence, monument evidence, occupational evidence, testimonial evidence or any other material evidence you considered, and whether the monument was found or placed.

H.Hall recovered the original W/Pine stump in field as from his field notes of June 2, 1932, Corner location falls in a productive farm field now, W/Pine stump has been plowed away over the years. Recovered an 18" long piece of Rail Road Rail approximately 18" below ground level. Placed an Aluminum A-1 monument in place of the iron rail. Left iron rail alongside monument to help aid location of Aluminum monument with metal locators.

- (c) In the plan view drawing below, provide reference ties to at least 4 witness monuments, or, if the location is within a municipality, to at least 2 witness monuments. (Witness monuments shall be made of concrete, natural stone, iron or other equally durable material.) Describe witness monuments.

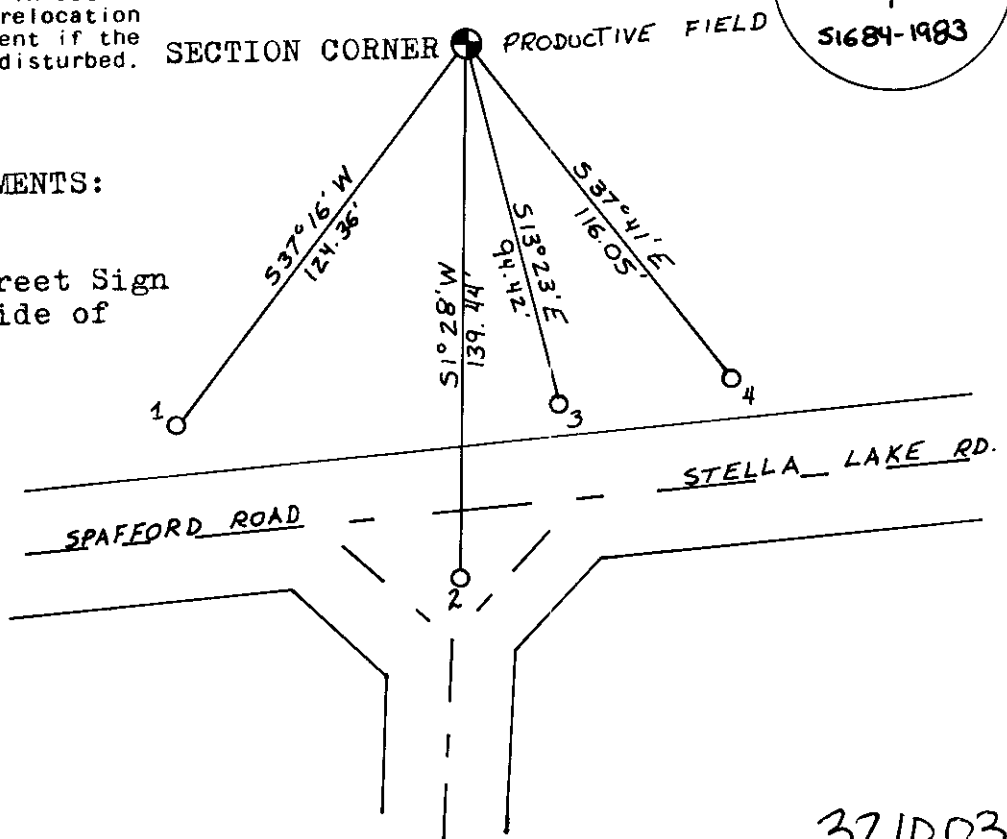
(ALUMINUM CAP STAMPED:)

- (d) Show a plan view drawing depicting the relevant monuments and reference ties which is sufficient in detail to enable accurate relocation of the corner monument if the corner monument is disturbed. Indicate north.



REFERENCE MONUMENTS:

1. 3/4" Iron Pipe
2. 2 1/2" Iron Street Sign
3. P.K. Nail in side of power pole
4. 3/4" Iron Pipe



E-17
 3710030000

(e) Describe any material discrepancy between the location of the corner as restored or reestablished and the location of that corner as previously restored or reestablished by distance and direction. Show the discrepancy on the plan view drawing under (d), above. Show the distances between the corner as previously restored or reestablished and (1) the corner as restored or reestablished, and (2) to at least 2 of the witness monuments shown on the drawing in (d), above.

NONE

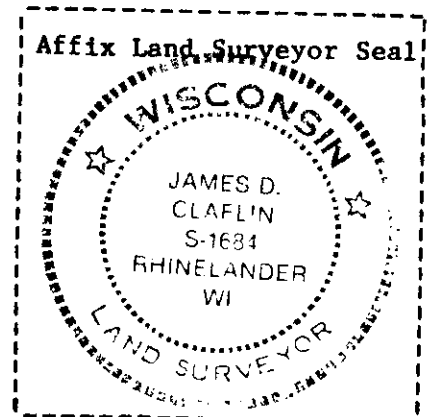
(f) Was the corner restored through acceptance of (1) an obliterated evidence location, or, (2) a found perpetuated location?

FOUND PERPETUATED LOCATION

(g&h) Was the corner reestablished through lost corner proportionate methods? If so, show the method, including the directions and distances to other public land survey corners used as evidence or used for proportioning in determining the corner location?

REGISTERS' OFFICE }
Oneida County, Wis. }

Received for Record the 18th day of
January A. D. 1984 at
10:00 o'clock A. M. and recorded in
Vol. _____ on page _____
Louis Terage Kuehn
Register



(i) I, James D. Claflin
(type or print name) certify that the corner location shown
on this record was determined by me or under my direction and
control and that this U.S. Public Land Survey Monument Record is
correct and complete to the best of my knowledge and belief.

Signature

Date

[Signature] 9-17-83

This form is intended to fulfill the requirements of Chapter A-E 7.08 (3)(a) thru (l) U.S. Public Land Survey Monument Location Record, Wisconsin Administrative Code. Use the reverse side of form for continuation.

U.S. PUBLIC LAND SURVEY MONUMENT LOCATION RECORD

Recorders Data

USPLS CORNER: NW SECTION SECTION: 11 TOWNSHIP: 37 NORTH RANGE: 10 EAST
 NAME OF WATERWAY FOR M.C. CORNER: N/A SECTION LINE: N/A
 (CITY)(VILLAGE)(TOWN) OF: STELLA COUNTY OF: ONEIDA

Description of monument found or placed and all other evidence used as the basis for monument location; including monuments and related measurements required if the corner location was reestablished by lost corner proportionate methods. Also indicate name of original surveyor, original survey date and the corner monument, bearing trees, witness or other reference monuments established; including measured bearing and distance ties, from available records.

THIS CORNER RECOVERED AND REFERENCED AT THE REQUEST AND APPROVAL OF ONEIDA COUNTY SURVEYOR MICHAEL ROMPORTL DUE TO THE DISTURBANCE OR INADEQUACY OF RECORD WITNESS MONUMENTATION.

I found and accepted an undisturbed standard cast aluminum monument with stamped Oneida County cap 20" below grade in an existing cultivated field.

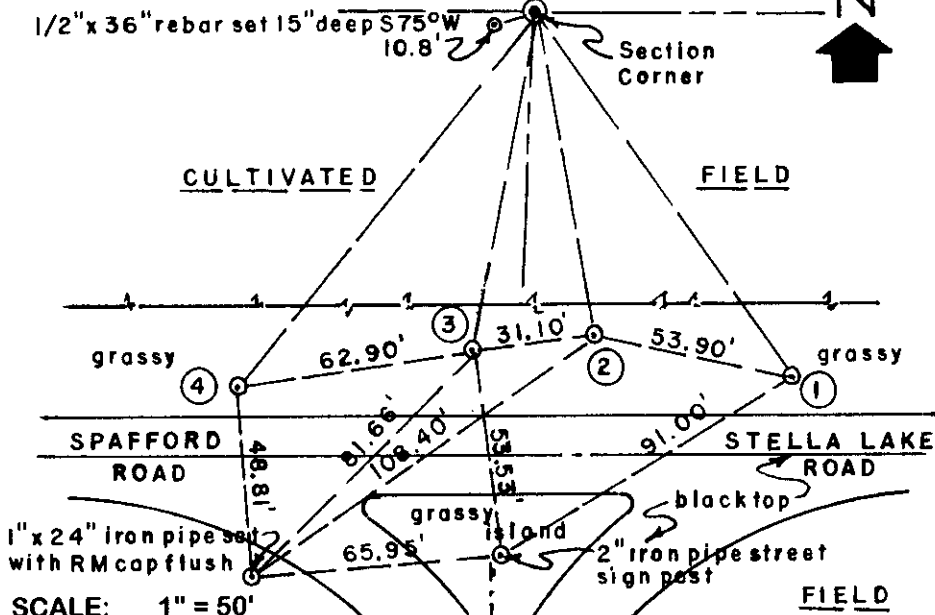
In August 1863, William E. Daugherty/GLO set a wood post as the original corner and marked OBTs: a 12" Bw S54°W 17 links and a 14" Pw N46°E 7 links, all of which are now obliterated.

In June 1932, H.C. Hall noted he had located the corner from the stump of original NE Pw OBT.

In September 1983, James D. Claflin, RLS 1684, found and accepted an old 18" long railroad rail at this corner 18" below grade and replaced it with a standard A-1 cast aluminum monument with stamped Oneida County cap and noted he left the old RR rail along side in ground and measured new ties: a 3/4" dia. iron pipe S37°16'W 124.36'; a 2.5" dia. iron pipe street sign post S01°28'W 139.44'; a PK nail in side of power pole S13°23'E 94.42' and a 3/4" dia. iron pipe S37°41'E 116.05', which I found OK and used in addition to other ties as noted below; excepting the PK nail in power pole and the street sign post which has apparently been moved South since 1983.

This recovery completed September 8, 1999; there were no direct witnesses other than by vehicular drive-bys.

Plan view map of monument location with bearing and distance ties to a minimum of four(4) described witness or reference monuments of concrete, natural stone, iron, live bearing trees or equivalent material. If applicable, also show a minimum of two(2) bearing and distance ties to any other monument found and not accepted; including the bearing and distance from the accepted monument.

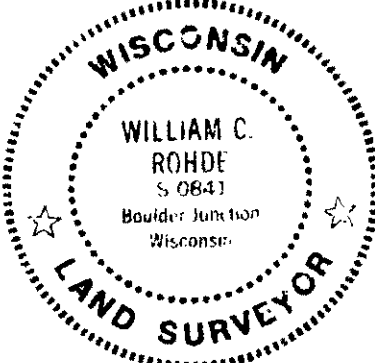


WITNESS MONUMENT TIES:

- ① Old 3/4" dia. iron pipe found with uncapped top 7" above grade S35°E 116.05'.
 - ② New 1" dia. by 24" iron pipe set with standard yellow poly Reference Mark cap flush S10°E 86.10'.
 - ③ New 1" dia. by 24" iron pipe set with standard yellow poly Reference Mark cap flush S11°W 90.44'.
 - ④ Old 3/4" dia. iron pipe found with uncapped top 4" below grade S39°E 124.36'.
- Standard white poly 'T' marker post set 6" West of Witness Monument 3.

Unless otherwise indicated, all bearing tree ties are to a .25" dia. by 2.5" long PK nail with a 1.25" dia. steel washer driven into unblazed right face and a .25" dia. by 2.5" long PK nail with a 2" dia. steel washer stamped BT is also driven into unblazed face of bearing tree at DBH; the basis for measured bearings is by compass to nearest degree and all tie distances are measured horizontal by steel tape corrected to nearest 1/100th feet at standard temperature of 68° F.

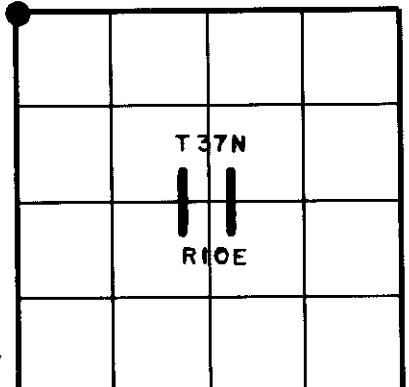
RLS SEAL:



LAND SURVEYOR CERTIFICATE:

I, William C. Rohde, hereby certify that I am duly licensed as a Professional Land Surveyor in the State of Wisconsin; that this USPLS monument location was determined by me and/or under my direct supervision and control; and that this U.S. Public Land Survey Monument Location Record is true and correct to the best of my knowledge and belief.

Signed: *William C. Rohde*
 William C. Rohde RLS 841



SECTION LOCATION MAP

INDEX NO. E 17

3710030000