

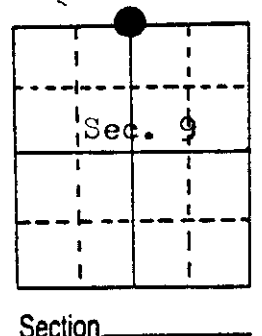
# U.S. PUBLIC LAND SURVEY MONUMENT RECORD

Note: This form is intended and designed to fulfill all requirements of Wisconsin Administrative Code, Chapter A-E 5.02, U.S. Public Land Survey Monument Record (3) (a) (b) (c) (d) (e) (f) (g) (h) (i). An additional sheet may be added if necessary to conform with said requirements.

(a) Corner location: Township 37 North  
 Range 10 East/West

Town/City/Village Stella

County Oneida



Section \_\_\_\_\_

(b) (f) (g) (h) Description of monument found at this corner and if it was accepted, state all evidence (material, testimonial, occupational, plats, records, other monuments) used as a basis for accepting. If not accepted or if nothing was found, state evidence used as basis for establishing location. If reestablished through lost corner proportionate methods, indicate all monuments, distances and directions used to establish.

Surveyed in 1863 by William E. Daugherty. West corrected between sections 4 and 9. 40.11 chains set  $\frac{1}{4}$  post. Tam. 7, N61E, 25 lks., Tam. 10, S36E, 32 lks.

H.C. Hall in 1930 while surveying for 3 rod road ran from center of section 9 North 40.444 chains and found Vaughns  $\frac{1}{4}$  corner and set new pine post.

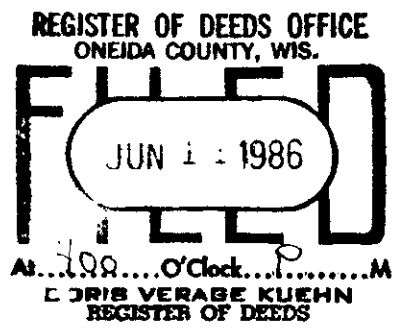
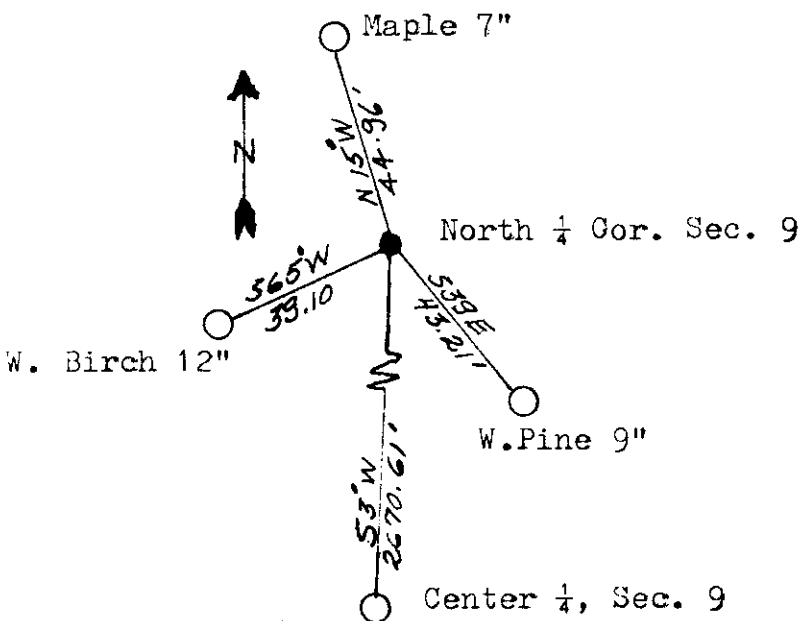
W.Pine 18, N66 $\frac{1}{4}$ E, 30.6 ft. W.Pine 18, S39 $\frac{1}{2}$ E, 69.6 ft.

F.R. Wincentzen in 1950 set iron pipe. W.Pine 18", N63 $\frac{1}{4}$ W, 124.7 lks.

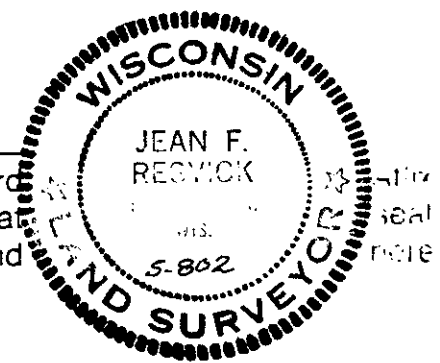
N.Pine 13", N35 $\frac{1}{2}$ W, 94.9 lks.

On Nov. 2, 1984, I found iron pipe in black top road. Using it as the  $\frac{1}{4}$  Cor. and establishing the Center of section 9, I find the distance to be 2670.61 ft. or 40.464 chains.

(c) (d) (e) Plan view of corner with ties to at least 4 witness monuments. If in disagreement with previously established corner, show the distances between the two corners and also indicate the ties to the disputed corner. Blazed and scribed the new bearing trees as shown on Plan view.



(i) I, Jean F. Resvick  
 (type or print name) certify that the corner location on this record was determined by me or under my direction and control and that this U.S. Public Land Survey Monument Record is correct and complete to the best of my knowledge and belief.



Jean F. Resvick Jan 10, 1985  
 Signature Date

Index No. E-11

3710040020