

At \_\_\_\_\_ O'Clock \_\_\_\_\_ M

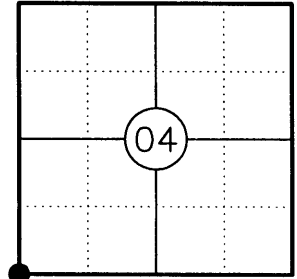
U.S. PUBLIC LAND SURVEY MONUMENT RECORD

NOTE: THIS FORM IS INTENDED AND DESIGNED TO FULFILL ALL REQUIREMENTS OF WISCONSIN ADMINISTRATIVE CODE CHAPTER A-E 7.08 U.S. PUBLIC LAND SURVEY MONUMENT RECORD (3) (a)(b)(c)(d)(e)(f)(g)(h)(i). AN ADDITIONAL SHEET MAY BE ADDED IF NECESSARY TO CONFIRM WITH SAID REQUIREMENTS.

(a) CORNER LOCATION:

SOUTHWEST CORNER OF SECTION 4  
TOWNSHIP 37 NORTH  
RANGE 10 EAST  
TOWN OF STELLA  
ONEIDA COUNTY

ONEIDA COUNTY COORDINATES (FEET)  
NORTHING: 193266.029  
EASTING: 302315.769



(b) HISTORY OF ORIGINAL CORNER:

ORIGINAL SURVEYOR: WILLIAM E. DAUGHERTY  
DATE OF SURVEY: AUG. 1863

ORIGINAL BEARING TREES: 12" BIRCH - N68°W, 17 LKS.  
12" ASPEN - S82°E, 19 LKS.

(f)(g)(h) DESCRIPTION OF MONUMENT FOUND AT THIS CORNER AND IF IT WAS ACCEPTED STATE ALL EVIDENCE (MATERIAL, TESTIMONIAL, OCCUPATIONAL, PLATS, RECORDS, OTHER MONUMENTS) USED AS A BASIS FOR ESTABLISHING LOCATION. IF REESTABLISHING THROUGH LOST CORNER PROPORTIONATE METHODS, INDICATE ALL MONUMENTS, DISTANCES, AND DIRECTIONS USED TO ESTABLISH. INDICATE TYPE OF MONUMENT AND SIGN POST FOUND OR SET.

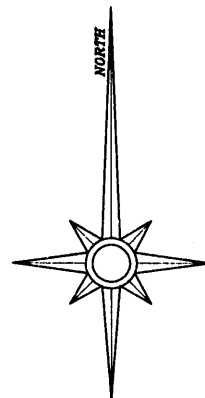
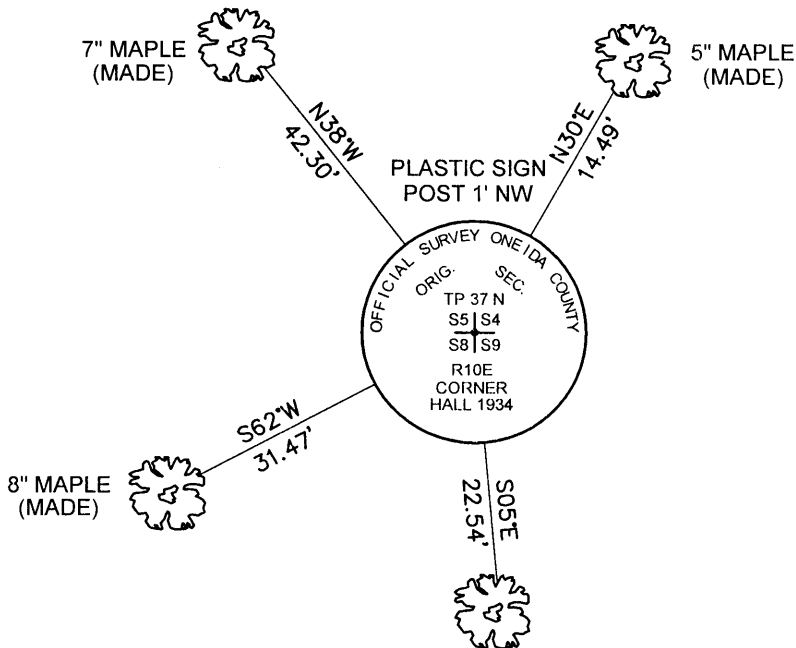
1934: H.C. HALL SET A CONCRETE MONUMENT IN PLACE OF VAUGHAN'S POST.

FEB. 1950: F.R. WINCENTSEN FOUND A CONCRETE MONUMENT AND PINE STUMP BT DURING HIS SURVEY IN SECTION 9.

1954 & 1963: RIPCO SURVEYORS FOUND A CONCRETE MONUMENT DURING THEIR SURVEY IN SECTION 8.

2008: I FOUND HALL'S 6" SQUARE CONCRETE MONUMENT WITH A 3" DIA. BRASS CAP AND MADE ACCESSORIES AS SHOWN BELOW.

(c)(d)(e) PLAN VIEW OF CORNER WITH TIES TO AT LEAST FOUR WITNESSES. IF IN DISAGREEMENT WITH PREVIOUSLY ESTABLISHED CORNER, SHOW THE DISTANCES BETWEEN THE TWO CORNERS AND ALSO INDICATE THE TIE TO THE DISPUTED CORNER.

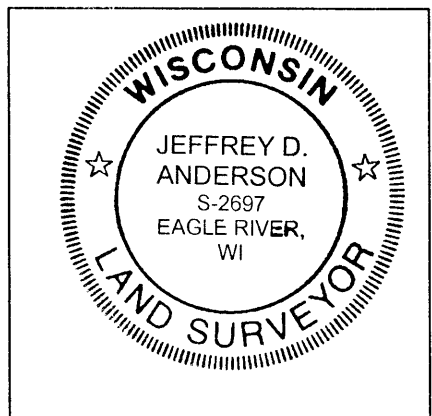


NOTE:

THE CORNER POSITION WAS DIRECTLY OCCUPIED 16" SPRUCE USING STATIC GPS AND IS REFERENCED TO ONEIDA COUNTY GPS BASE #242S (10PPM). THE MEASUREMENTS WERE MADE DURING A SURVEY OF THE SOUTH LINE OF SECTION SECTIONS 4 AND 5 IN DECEMBER, 2008. CHECKS WERE MADE ON THE S 1/4 OF SECTION 4 AND THE S 1/4 OF SECTION 5 WHICH WERE PREVIOUSLY MEASURED BY AERO-METRIC, INC.

NOTES:  
NOT TO SCALE  
DISTANCES TO NAIL IN SIDE OF TREE

I, JEFFREY D. ANDERSON, REGISTERED LAND SURVEYOR NO. 2697, HEREBY CERTIFY THAT THE CORNER LOCATION ON THIS RECORD WAS REFERENCED BY ME OR UNDER MY DIRECTION AND CONTROL; THAT THE POSITIONAL ACCURACY OF COORDINATES DOES NOT EXCEED 50PPM AND THAT THIS U.S. PUBLIC LAND SURVEY MONUMENT RECORD IS COMPLETE TO THE BEST OF MY KNOWLEDGE AND BELIEF.



INDEX NO. *5-19*

*Jeffrey D. Anderson*  
SIGNATURE

*12/30/08*  
DATE

*3710050000*