

CERTIFIED LAND CORNER RESTORATION

Index No. **E-3**

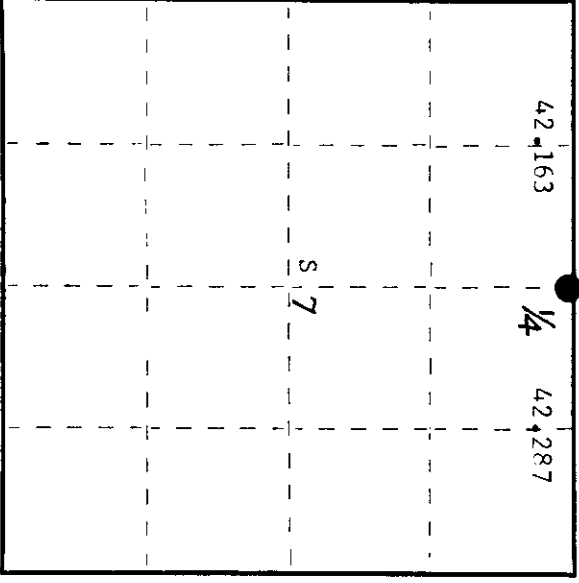
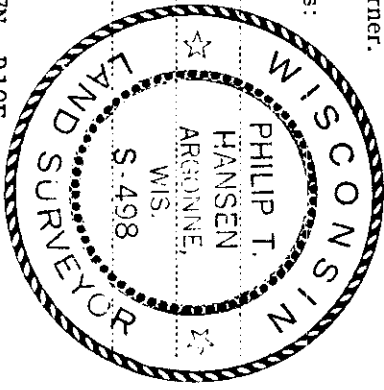
State of Wisconsin

County of Oneida } ss.

I, Phillip T. Hansen, do hereby certify that on the 22nd day of July, 1977, I found evidence of the quarter corner of Section 6 & 7

Township 37 North, Range 10 East, Fourth Principal Meridian, as described hereon; and that from this evidence I established a new monument and accessories as described hereon to perpetuate the original location of this corner.

Resident witnesses:
Jim Claflin
Herb Wagoner



○ = Corner monument restored.

History of original corner establishment:

Original Corner established by Wm. E. Dougherty, Deputy Surveyor, in 1863 from which Birch 10" bears S36°W, 13 links and White Pine 12" bears N18°E, 12 links. Corner re-established by N. Loftus, Ripco Surveyor, in 1958. Ran random line 270° 05' mag. 84.19 1/2 chains to close out 6.606 chains south of Section Corner. Corrected distance 84.45 chains. Set 1/4 corner at 42.287 chains. Set 3/4" iron pin in road and set witness corner 25 links east.

Description of corner evidence found:

Recovered 3/4" iron pin in center of old road which has now been re-routed.
Recovered 2" iron pipe with 4" square brass cap stamped as witness corner.
No BTs in evidence. Brass cap stamped:

T37N R10E
S 6 1/4
+
S 17 1/4
Corner 25 lks West
1 inch pin

Description of monument and accessories I established to perpetuate the original location of this corner.

Monument projects 24" above ground.
NBTS - Red Pine 6" S1°E, 236.1 links, scribed 1/4 BT.
Red Pine 5" S25°E, 112.2 links, scribed 1/4 BT.
Red Pine 6" S58°E, 83.9 links, scribed 1/4 BT.

Dated at Rhinelander, Wis., this 29th day of July, 1977

Signature: *Phillip T. Hansen* Title: Registered Land Surveyor Registration No. S-498
(County Surveyor, Registered Land Surveyor, or other duly authorized official)

Office of Register of Deeds, County of Oneida
Instrument was filed in this office for record on the 5th day of August, 1977
at 9:00 o'clock a.m.

Signature: *Doris Verage Kuehn*
(Register of Deeds)

By: Deputy

3710060020

This form is intended to fulfill requirements of Chapter A-E 7.08 (3)(a) thru (i) U.S. Public Land Survey Monument Location Record, Wisconsin Administrative Code. Use reverse side for geodetic location data and/or other continuation purposes.

U.S. PUBLIC LAND SURVEY MONUMENT LOCATION RECORD

Recorders Data

USPLS CORNER: NORTH 1/4 CORNER SECTION: 7 TOWNSHIP: 37 NORTH RANGE: 10 EAST

NAME OF WATERWAY FOR M.C. CORNER: N/A SECTION LINE: N/A

~~(CITY/VILLAGE)~~(TOWN) OF: STELLA COUNTY OF: ONEIDA

Description of monument found or placed and all other evidence used as the basis for monument location; including monuments and related measurements required if the corner location was reestablished by lost corner proportionate methods. Also indicate name of original surveyor, original survey date and the corner monument, bearing trees, witness or other reference monuments established; including measured bearing and distance ties, from available records.

This corner re-referenced due to disturbance by approval of Michael Romportl, Oneida County Surveyor this date. I found disturbed 3/4" dia. iron rod with uncapped top 12" below existing grade, which I re-plumbed and then drove a 3/4" by 24" long iron pipe over it with uncapped top 4" below grade for new ties. I also found record 2" dia. witness monument with RIPCO stamped plate top tipped 15°+/- East, which I replumbed with cap 23" above grade. Face blazes of three(3) record BTs were also found overgrown but scars plain with blue tree paint, so I set standard PK nails and washers as described below for new ties.

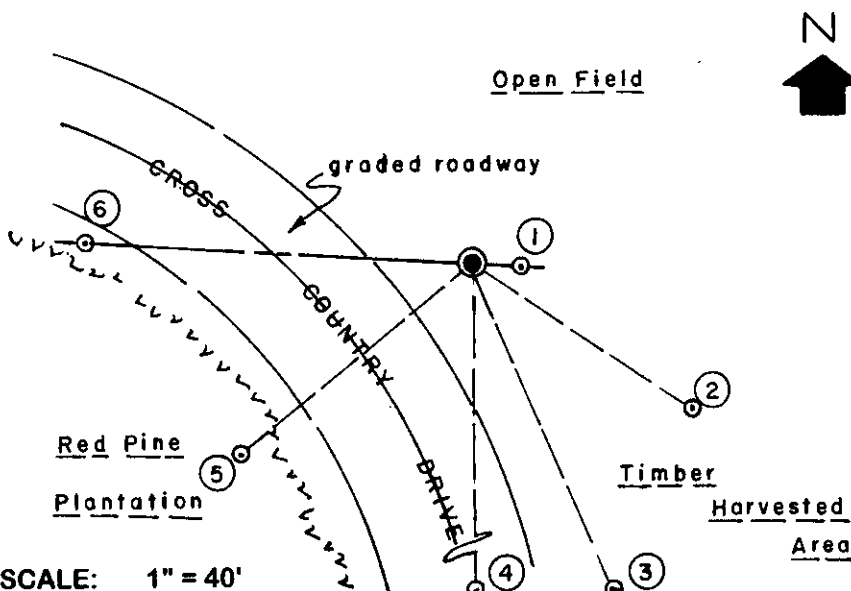
In 1863, William Daugherty/GLO set a wood post as original corner and marked OBTs, a 10" Bw S36°W 13 links and a 12" Pw N18°E 12 links, which are all now obliterated within existing roadway area.

In 1958, Norman Loftus, RLS 259, set a 3/4" dia. iron pin at this corner on a right line between the opposite section corners by proportion at 42.163 chains from NW section corner and 42.287 chains from East section corner; and he set a standard 2" dia. iron pipe witness monument with RIPCO stamped plate cap 25 links East of corner location; no BTs.

1977 OK MGR
In 1997, Philip Hanson, RLS 498, found and accepted iron pin and witness monument previously set by Norman Loftus and referenced corner location to three(3) new BTs which I found OK and used for new ties as defined herein. Hanson filed his certified land corner restoration record in Oneida County Register of Deeds office on August 5, 1977.

This recovery completed May 4, 1999; there were no witnesses.

Plan view map of monument location with bearing and distance ties to a minimum of four(4) described witness or reference monuments of concrete, natural stone, iron, live bearing trees or equivalent material. If applicable, also show a minimum of two(2) bearing and distance ties to any other monument found and not accepted; including the bearing and distance from the accepted monument.



WITNESS MONUMENT TIES:

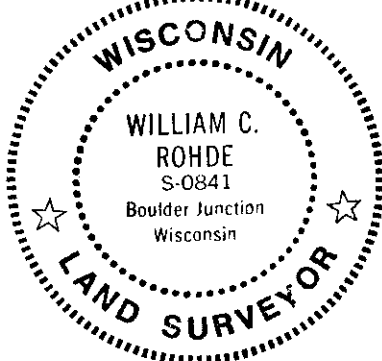
- ① 2" dia. iron pipe found with RIPCO stamped plate cap S86°E 16.22'.
- ② Record BT 16" Pr S56°E 55.42'.
- ③ Record BT 12" Pr S22°E 74.12'.
- ④ Record BT 13" Pr South 155.8'.
- ⑤ New BT 5" Pr S51°W 62.70'.
- ⑥ 3/4" dia. by 24" long iron pipe set with yellow poly Reference Mark cap flush with grade at N86°W 81.23'.

Standard white poly 'T' marker post set 9" West of Witness Monument # 1.

SCALE: 1" = 40'

Unless otherwise indicated, all bearing tree ties are to a .25" dia. by 2.5" long PK nail with a 1.25" dia. steel washer driven into unblazed right face and a .25" dia. by 2.5" long PK nail is also driven into unblazed face of bearing tree at DBH; the basis for measured bearings is by magnetic compass to nearest degree and all the distances are measured horizontal by steel tape corrected to nearest 1/100th feet at standard temperature of 68 degrees Fahrenheit.

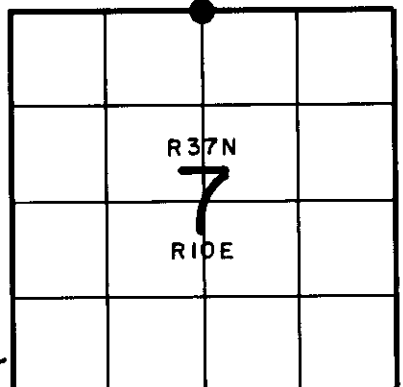
RLS SEAL:



LAND SURVEYOR CERTIFICATE:

I, William C. Rohde, hereby certify that I am duly licensed as a Professional Land Surveyor in the State of Wisconsin; that this USPLS monument location was determined by me and/or under my direct supervision and control; and that this U.S. Public Land Survey Monument Location Record is true and correct to the best of my knowledge and belief.

Signed: *William C. Rohde*
William C. Rohde RLS 841



SECTION LOCATION MAP

INDEX NO. E-3
3710060020