

CERTIFIED LAND CORNER RESTORATION

Index No. J. 7

State of Wisconsin }
County of Oneida } ss.

I Philip T. Hansen, do hereby certify that on the 18th day of September, 1978, I found evidence of the Quarter corner of Sections 8 & 17 Township 37, North, Range 10 East, Fourth Principal Meridian, as described hereon; and that from this evidence I established a new monument and accessories as described hereon to perpetuate the original location of this corner.

Resident witnesses:

Jim Claflin

Herb Wagoner

John Masbaum

History of original corner establishment:

Original corner established by Wm. E. Dougherty, Deputy Surveyor, in 1863, from which white pine 12" bears N32°E, 19 links and white pine 8" bears S13°E, 11 links. N. Loftus, Ripco Surveyor, recovered Abernathy's iron pin in road bed, and a 3" iron pipe 13½ links south from which they ran south on 1/4 line to set interior corners.

Description of corner evidence found:

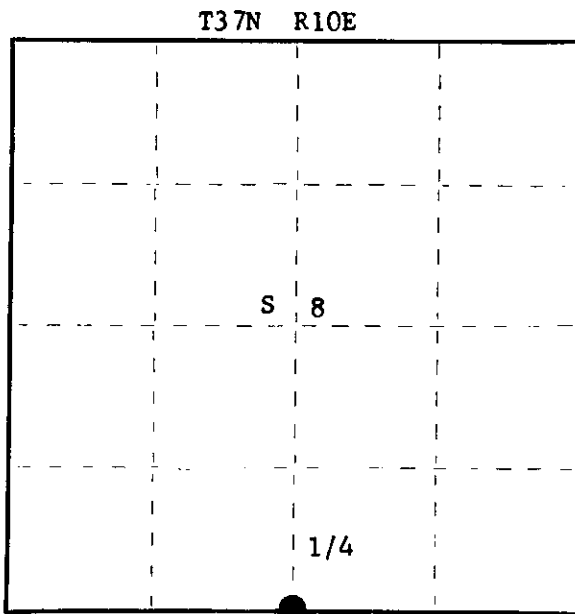
Recovered Abernathy's threaded iron pin with square nut 2' below surface of road bed on south edge of Cross Country Road. Ripco has witness corner on south side of road which did not fit too well, 25 links. Recovered jack pine B.T. (Abernathy's) 16" N21°E, 64.5 links, scribing grown over.

Description of monument and accessories I established to perpetuate the original location of this corner.

Moved Ripco's 2" iron pipe with 4" brass cap to fit with 25 link measurement. Monument projects 1' above ground. Cap stamped:

Marked NBT's to true corner -
Black Spruce 7" S74°W, 106.0 links
Jack Pine 7" N21°W, 48.0 links
both scribed 1/16 BT

T37N R10E
Cor. 25 lks No.
1/4 S + 8 1/4
S + 17
RIPCO



○ = Corner monument restored.

Dated at Rhineland, Wis., this 4th day of October, 1978

Signature Philip T. Hansen Title Registered Land Surveyor Registration No. S-498
(County Surveyor, Registered Land Surveyor, or other duly authorized official)

Office of Register of Deeds, County of Oneida I hereby certify that the within instrument was filed in this office for record on the 9th day of October, 1978 at 1:30 o'clock P. M.

Doris Terese Kuehn
(Register of Deeds)

By _____ Deputy

FORM 985 H. C. MILLER CO., MILWAUKEE

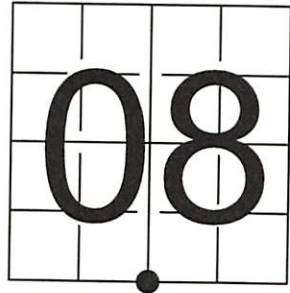
0200800123

U S PUBLIC LAND SURVEY MONUMENT RECORD

NOTE: This form is intended and designed to fulfill all requirements of Wisconsin Administrative Code, Chapter A-E 7.08 U.S. Public Land Survey Monument Record (3) (a-i)

A-E 7.08(3)(a) Identity of corner
 SOUTH 1/4 CORNER OF SECTION 08
 TOWNSHIP 37 NORTH
 RANGE 10 EAST OF THE 4TH PM
 TOWN OF STELLA
 COUNTY OF ONEIDA

WISCORS - ONEIDA COUNTY
 N: 188,009.615 USft
 E: 300,329.990 USft
 Datum: NAD83 (2011)
 GNSS Method RTN - Direct
 GNSS Control WISCORS VRS



The coordinate value shown has been verified by the average of two or more GPS observations at a markedly different time.

A-E 7.08(3)(b) Description of any record evidence, monument evidence, occupational evidence, testimonial evidence, or any other material evidence.

Original Surveyor: William E. Daugherty

REGISTER OF DEEDS OFFICE
 ONEIDA COUNTY
 FILED

Date of Original Survey Commenced: August 21, 1863
 Completed: August 27, 1863

JAN 19 2022

Original Accessories:

White Pine 12 N. 32° E. 19
 White Pine 8 S. 13° E. 11

See Previous Monument Record:
 Index No. J-7

KYLE J. FRANSON
 REGISTER OF DEEDS

Surveyor 00259 - Norman J. Loftus - Recovered iron pin in road bed, and a 3" iron pipe, 13 1/2 links south.

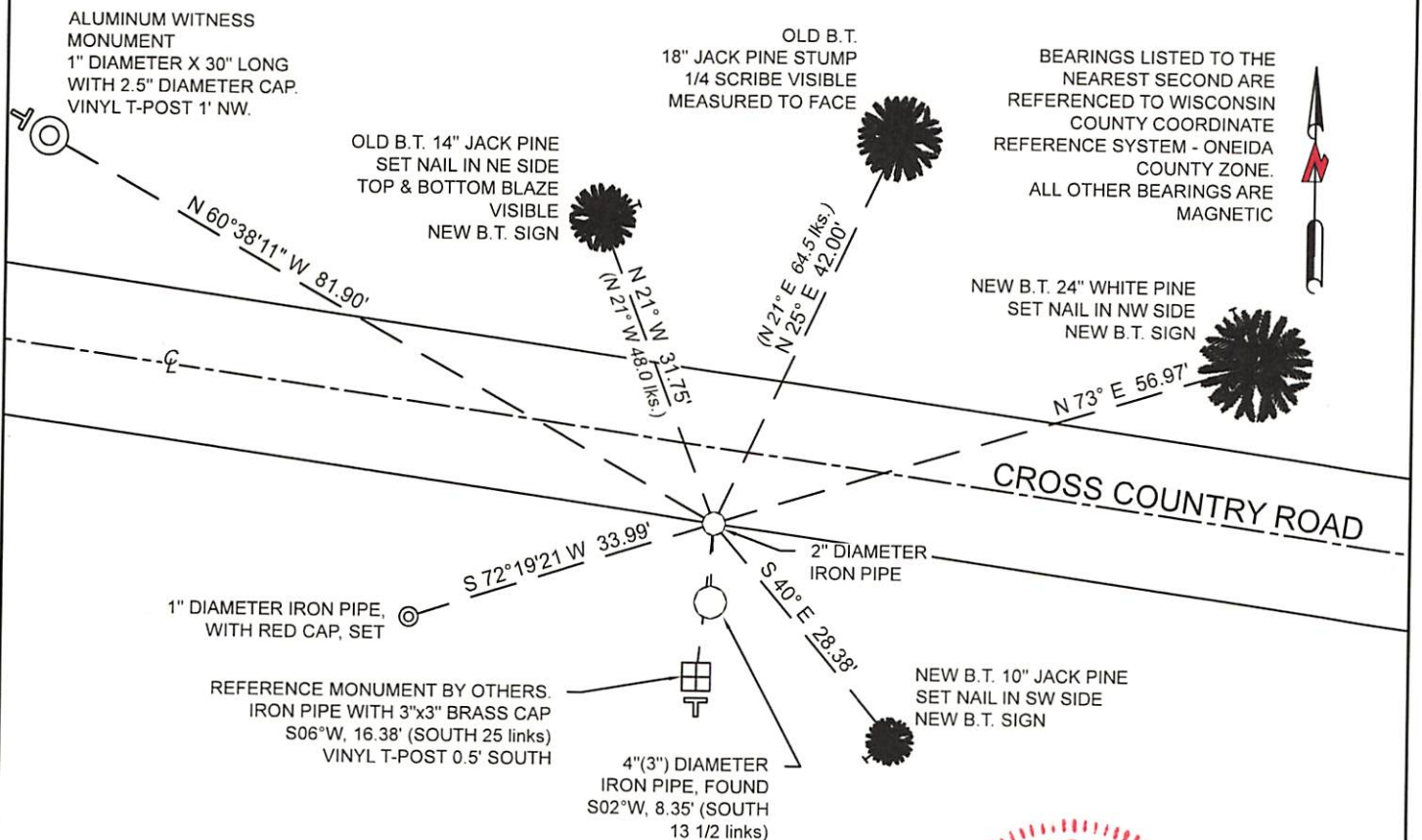
October 4, 1978 - Surveyor 498 - Phillip T. Hansen - Recovered a iron pin with a square nut 2' below surface of road bed, and a Ripco witness corner "which did not fit too well", and a Jack Pine B.T. - 16" N21°E, 64.5 links.

A-E 7.08(3)(f) The corner is a found perpetuated location.

May 26, 2021 - In preparation of a road reconstruction project, I found: a 2" Diameter Iron Pipe ±6" below road surface and ±8 feet south of Cross Country Road centerline, a 3" x 3" (4") brass capped reference monument stamped to identify the corner location, and a 4" (3") Diameter iron pipe all as shown below.

November 04, 2021 - I returned to the location and found the monument to be the same and intact, and established new witnesses as shown below. By appearance, road reconstruction had not yet occurred.

A-E 7.08(3)(c)(d)(e)(h) Plan view of corner with references to at least 4 witness monuments. If in disagreement with previously established corner, show the distances between the two corners and also indicate the ties to the disputed. The directions and distances to other public land survey corners used as evidence or used for determining the corner location.



A-E 7.08(3)(i) I, Jeffrey L. DeMuth, Professional Land Surveyor No. S-2656, hereby certify that the corner location on this record was determined by me or under my direction and control and that this U.S. Public Land Survey Monument Record is correct and complete to the best of my knowledge, and belief

Jeffrey L. DeMuth
 SIGNATURE



December 30, 2021
 DATE