

Stock No. 26273

U. S. PUBLIC LAND SURVEY MONUMENT RECORD

INSTRUCTIONS :

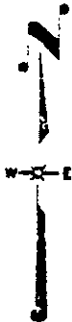
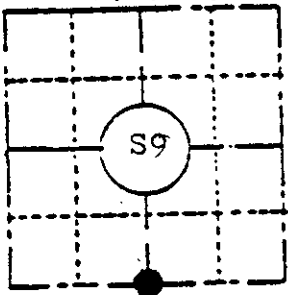
This record shall show the location of the corner and shall include all of the following nine elements (1 through 9).

- (a) Identify the corner by reference to the U.S. public land survey system.

One Quarter Corner between sections 9 and 16, Township 37 Noth, Range 10 East.

Surveyed in 1863 by William E. Daugherty.
Reported not found in 1930 by H.C.Hall
Set by proportional methods in 1953
by F.R. Wincentzen

Sec. 9, T37N, R10E



F.R. Wincentzen set :
Iron Pipe
Birch 12, S33E, 71 links
Birch 8, 30E, 100.4 links

LOCATION SKETCH

(Location of landmark indicated by "●")

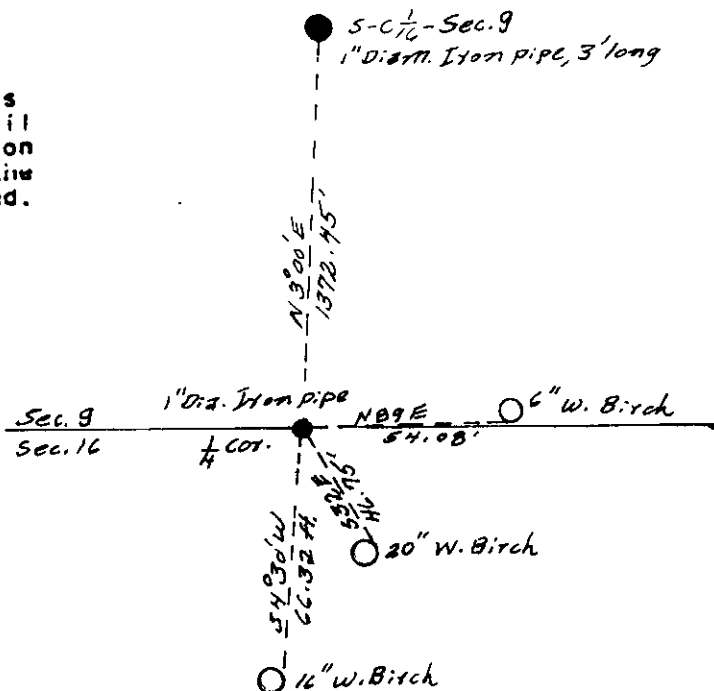
- (b) Describe any record evidence, monument evidence, occupational evidence, testimonial evidence or any other material evidence you considered, and whether the monument was found or placed.

Found Nov. 2, 1984
Iron Pipe on timber line (E&W)
White Birch 20", S32E, 46.75 feet
White Birch 16", S4 30W, 66.32 feet

I made new bearing tree.
White Birch 6", N 89 E, 54.08 feet

- (c) In the plan view drawing below, provide reference ties to at least 4 witness monuments, or, if the location is within a municipality, to at least 2 witness monuments. (Witness monuments shall be made of concrete, natural stone, iron or other equally durable material, except wood.) Describe witness monuments.

- (d) Show a plan view drawing depicting the relevant monuments and reference ties which is sufficient in detail to enable accurate relocation of the corner monument if the corner monument is disturbed. Indicate north.



5-11

(e) Describe any material discrepancy between the location of the corner as restored or reestablished and the location of that corner as previously restored or reestablished by distance and direction. Show the discrepancy on the plan view drawing under (d), above. Show the distances between the corner as previously restored or reestablished and (1) the corner as restored or reestablished, and (2) to at least 2 of the witness monuments shown on the drawing in (d), above.

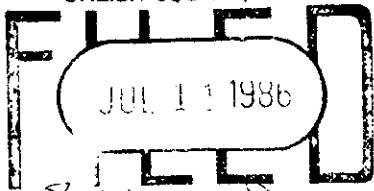
No discrepancy found

(f) Was the corner restored through acceptance of (1) an obliterated evidence location, or, (2) a found perpetuated location?

Corner was accepted as found set by F.R. Wincentzen in 1953.

(g&h) Was the corner reestablished through lost corner proportionate methods? If so, show the method, including the directions and distances to other public land survey corners used as evidence or used for proportioning in determining the corner location?

REGISTER OF DEEDS OFFICE
ONEIDA COUNTY, WIS.



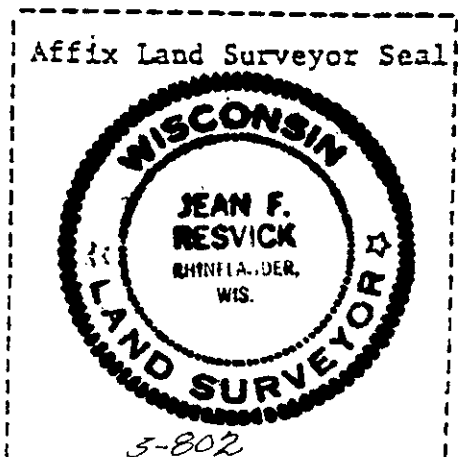
At... O'Clock... M
DORIS VERAGE KUEHN
REGISTER OF DEEDS

Jean F. Resvick

(i) I, Jean F. Resvick
(type or print name) certify that the corner location shown on this record was determined by me or under my direction and control and that this U.S. Public Land Survey Monument Record is correct and complete to the best of my knowledge and belief.

Jean F. Resvick
Signature

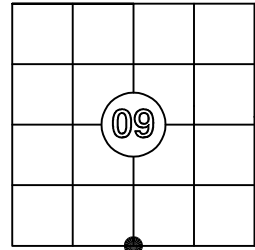
11-8-84
Date



US PUBLIC LAND SURVEY MONUMENT RECORD

Per Wis. Admin. Code § A-E 7.08, a U.S. public land survey monument record shall be prepared and filed with the county survey records as part of any land survey within 60 days of setting or accepting the corner, which includes or requires the perpetuation, restoration, or use of a U.S. public land survey corner and when any of the situations in Wis. Admin. Code § A-E 7.08(1)(a), (b) or (c) arise.

CORNER ID:
3710090020



The coordinate value has been verified by at least one of the following methods: 1) comparison to a previously GNSS determined published value; 2) The value is the average of two or more GNSS observations at markedly different times; 3) one or more distances were measured to the corner from temporary GNSS observed offset locations.

3(a) Corner Identification:

Found Oneida County aluminum monument
South 1/4 corner
Section 09
Township 37 North
Range 10 East
4th Principal Meridian
Town of Stella
Oneida Co., WI

Observed Coordinates:

N: 187679.34
E: 304832.13
Datum: NAD83 (2011)
GNSS Control: WISCRS Network
GNSS Method: RTK-Direct
Verification Method: 2

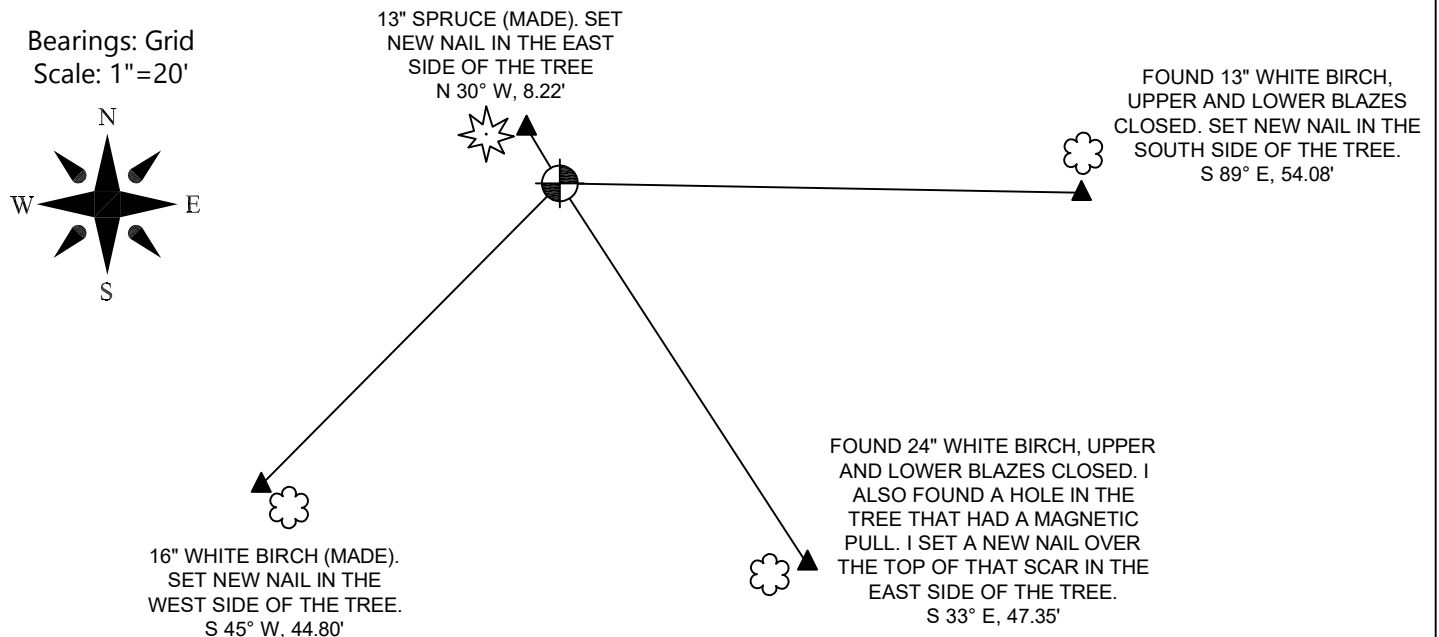
History of Original Corner Establishment

Corner Set: Wood Post
Original Surveyor: Wm. Daugherty
Date of Survey: August, 1863
White pine, 10" N 38° E, 6 links
White pine, 10" S 15° E, 14 links

3(b)((c)(d)(f)(g)(h))

This is a continuation of a previous USPLSS Monument Record by Surveyor Jean Resvick (1984). See previous record for additional history on this corner.

- 8/28/1990 - Jean Resvick, S-802, finds a 1" iron pipe.
- 11/10/1992 - Todd Loftus, S-1523, finds a 1" iron pipe and sets an Oneida County aluminum monument.
- 6/7/1995 - Todd Loftus, S-1523 finds a subdivisional monument.
- 12/22/2025 - I, Anthony Jones, S-2508, found an Oneida County aluminum monument as set by Todd Loftus, in good condition, stamped to identify the location. I found two of the three witness trees, by Resvick, in good condition. I added a new nail to each tree and made two new witnesses with a nail in the side, all as shown below. The balsam at S4°30'W, 66.32 has fallen.



3(i)

I, Anthony R. Jones, Wisconsin Professional Land Surveyor No S-2508, hereby certify that the corner location shown on this record was determined by me, or under my direction or control, and that this U.S. Public Land Survey Monument Record is correct and complete to the best of my knowledge and belief.

