

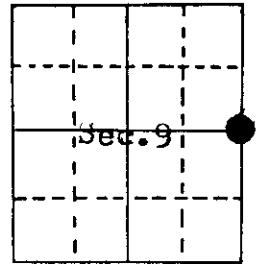
# U.S. PUBLIC LAND SURVEY MONUMENT RECORD

Note: This form is intended and designed to fulfill all requirements of Wisconsin Administrative Code, Chapter A-E 5.02, U.S. Public Land Survey Monument Record (3) (a) (b) (c) (d) (e) (f) (g) (h) (i). An additional sheet may be added if necessary to conform with said requirements.

(a) Corner location: Township 37 North  
 Range 10 East/West

Town/City/Village Stella

County Oneida

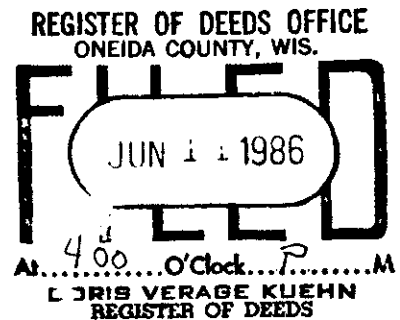
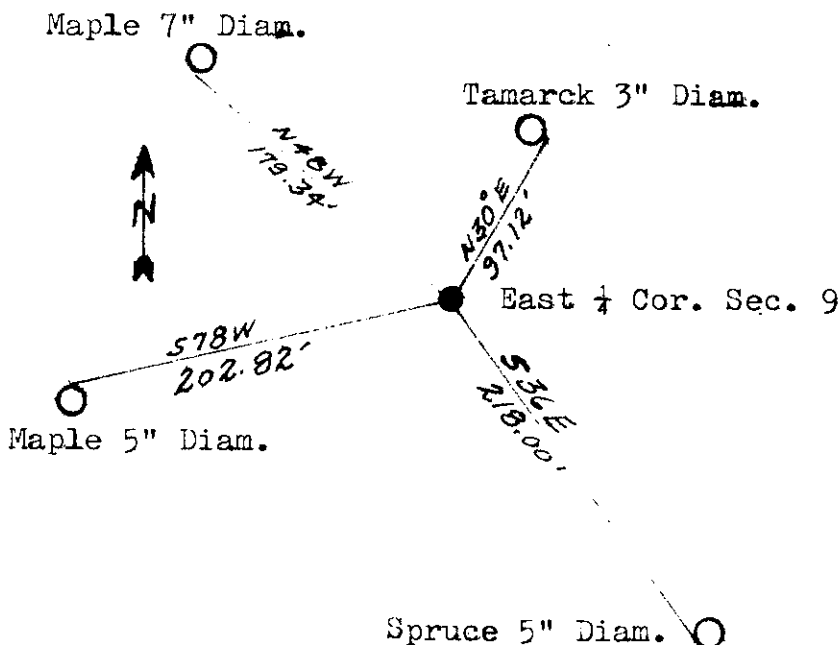


Section 9

(b) (f) (g) (h) Description of monument found at this corner and if it was accepted, state all evidence (material, testimonial, occupational, plats, records, other monuments) used as a basis for accepting. If not accepted or if nothing was found, state evidence used as basis for establishing location. If reestablished through lost corner proportionate methods, indicate all monuments, distances and directions used to establish.

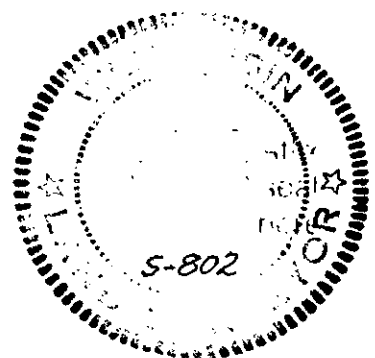
Surveyed in 1863 by William E. Daugherty. 40 chains north between section 9 & 10 Set  $\frac{1}{4}$  post, White Pine 12" N 4 W, 198 lks. White Pine 12", N 1 E, 207 lks. 42 chains north leave swamp.  
 H.C. Hall in 1934 set Concrete Monument (6X6x36) with Brass Cap.  
 Wincentzen in 1950 used Halls monument. North 2 chains leave Swamp. North 3.5 chains center line road. East 4 chains leave Swamp, East 5.63 chains enter Swamp, East 9 chains leave Swamp, East 9.92 chains center line road.  
 Jan. 10, 1985, I found Concrete monument  $3\frac{1}{2}$  chains south of road and 2 chains south from swamp edge and 4 chains west of swamp island.

(c) (d) (e) Plan view of corner with ties to at least 4 witness monuments. If in disagreement with previously established corner, show the distances between the two corners and also indicate the ties to the disputed corner. Blazed and scribed new bearing trees as shown on plan view.



(i) I, Jean F. Resvick  
 (type or print name) certify that the corner location on this record was determined by me or under my direction and control and that this U.S. Public Land Survey Monument Record is correct and complete to the best of my knowledge and belief.

Jean F. Resvick Jan. 10, 1985  
 Signature Date



6-13

3710092000