

CERTIFIED LAND CORNER RESTORATION

State of Wisconsin }
 County of Oneida } ss.

I William Immich, do hereby certify that on the 20 day of April, 1978, I found evidence of the Southwest corner of Section 11 Township 37 North, Range 10 East, Fourth Principal Meridian, as described hereon; and that from this evidence I established a new monument and accessories as described hereon to perpetuate the original location of this corner:

Description of original monument and accessories and subsequent restorations: Found bearing trees set by J.M. Abernathy in previous survey. Did not find corner in place.

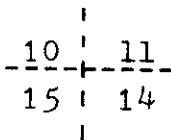
See Genisot and Associates Inc. Dwg. 805-1
 Ran line from S 1/16 SW Sec. 10 to S.E. cor. Sec. 11
 found Iron Pipe at above 1/16 cor.
 found brass capped mon. at S.E. cor. Sec. 11

Description of corner evidence found:

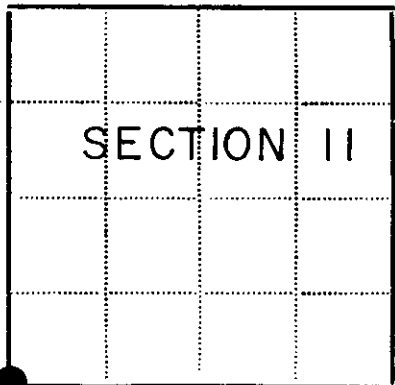
N. Pine N 51° E 165.5 lks
 Birch S 51° W 205.6 lks
 Birch N 51° E 260.5 lks

Description of monument and accessories I established to perpetuate the location of this corner:

Set capped county marker stamped



Bearing trees
 4" Oak N 54° W 58.16'
 5" W. Birch S 4° W 94.23'
 P.P. No. 3710-14 WIS N 32° E 58.14'



● - Corner monument restored
 □ -

Resident witnesses Mark J. Hendrickson

Dated at Rhinelander, Wisconsin, this 11 day of August 1978.

Signature William Immich Title Registered Land Surveyor
 (County Surveyor, Registered Land Surveyor, or other duly authorized official)
 Surveyors Registration No. S-1383

Office of Registrar of Deeds County of Oneida

I hereby certify that the within instrument was filed in this office for record on the 17th day of September 1982, and was filed in Book No. _____ Page No. _____ of County Records.

Signature Doris Verage Kuehn Title REGISTER OF DEEDS

Township 37 North, Range 10 East, Section 11, Index No. _____, Page No. _____

371010 0000

5-17

US PUBLIC LAND SURVEY MONUMENT RECORD

Per Wis. Admin. Code § A-E 7.08, a U.S. public land survey monument record shall be prepared and filed with the county survey records as part of any land survey within 60 days of setting or accepting the corner, which includes or requires the perpetuation, restoration, or use of a U.S. public land survey corner and when any of the situations in Wis. Admin. Code § A-E 7.08(1)(a), (b) or (c) arise.

3(a) Corner Identification:

Found 1/2" iron rod
Southeast corner
Section 10
Township 37 North
Range 10 East
4th Principal Meridian
Town of Stella
Oneida Co., WI

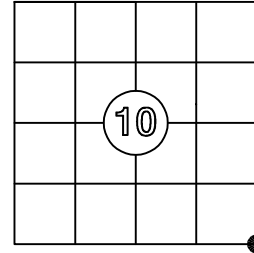
Observed Coordinates:

Found 1/2" iron rod
N: 187035.10
E: 312829.23
Datum: NAD83(2011)
GNSS Control: WISCRS NETWORK
GNSS Method: RTK-Direct
Verification Method: 2

Observed Coordinates:

Railroad spike
N: 187033.34
E: 312829.34
Datum: NAD83(2011)
GNSS Control: WISCRS NETWORK
GNSS Method: RTK-Direct
Verification Method: 2

CORNER ID:
371010000



Establishment of Original Corner

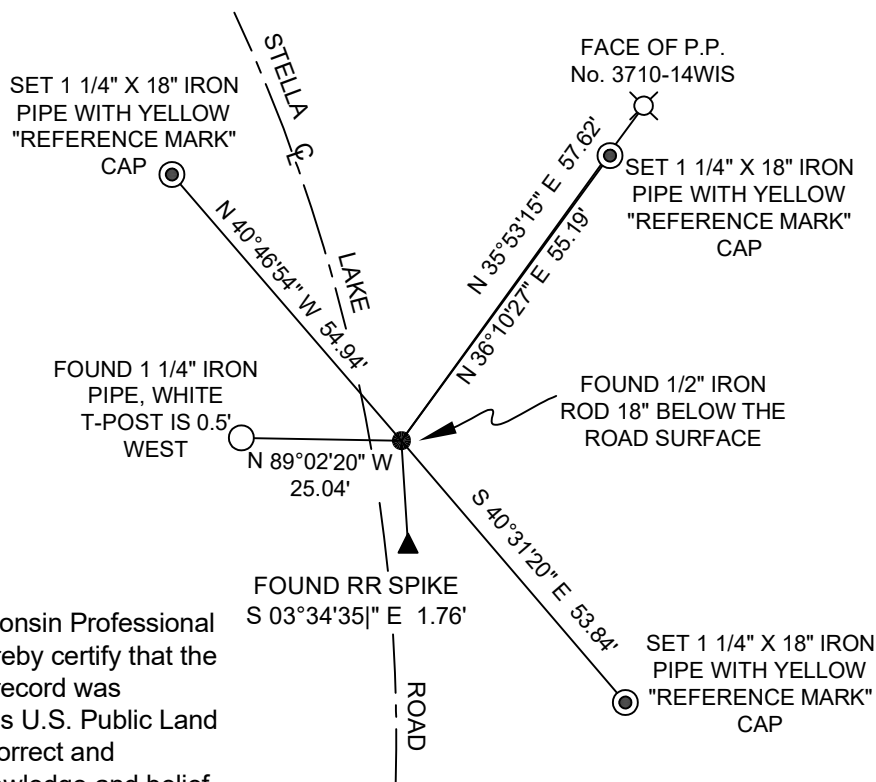
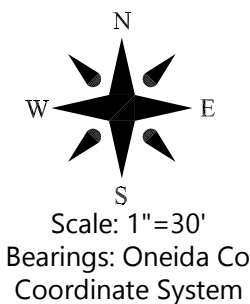
Corner Set: Wood Post
Original Surveyor: Wm. Daugherty
Date of Survey: June, 1863
Aspen 12", S 18° E, 33 lks
Birch 10", N 65° W, 8 lks

The coordinate value has been verified by at least one of the following methods:

1. Comparison to a previously determined GNSS determined published value;
2. The value is the average of two or more GNSS observations at markedly different times;
3. One or more distances were measured to the corner from offset GNSS observed locations, set and observed per No. 2 methods.

3(b)(c)(d)(f)(g)(h)

- This is a continuation of a previous USPLSS Monument Records by Surveyor William Immich, S-1383 (1978).
- 4/20/1978 - William Immich, S-1383, finds a railroad spike.
- 11/10/1978 - William Immich, S-1383, set a stamped county marker, using existing witnesses.
- 10/29/1979 - William Bandow, S-1182 finds a county surveyor's capped monument.
- 5/3/1999 - Kip Soder, S-1731, finds an Oneida County aluminum capped monument.
- 7/26/2001 - Devon Vanden Huevel, S-1795, finds an aluminum monument.
- 10/08/2002 - Devon Vanden Huevel, S-1795, finds an aluminum
- 9/3/2003 - William Bandow, S-1182, sets a railroad spike per survey by W. Immich, dated 1978.
- 5/12/2004 - Kip Soder, S-1731, finds the railroad spike.
- 1/9/2006 - Jeffrey Brock, S-2642, finds the aluminum monument and the railroad spike
- 8/30/2025 - I, Anthony Jones, S-2508, found the railroad spike and a hole in the blacktop. I removed the dirt in the hole and dug down 18" below the surface of the road. I did not find the aluminum monument, but did find a 1/2" iron rod that appears to be the remnants of the monument in stable condition. It fit with the dimensions of the surveys that call for the monument. Further research should be done to determine which is the correct marker. I found a 1 1/4" iron pipe and white t-post, but could not find the origin of either. I did not find the witnesses that Immich found in 1978 and only found the power pole that he used. Neither marker matches with the face of the power pole. I did not find a nail in the side, so I'm not sure where his distance was measured to. It is possible that this could be a newer power pole. The other two witnesses are gone, so I set three new 1 1/4" by 18" iron pipes with a yellow "reference mark" cap. The corners were double occupied with a Carlson NR3 receiver and the witnesses were located with a Trimble robotic total station.



3(i) I, Anthony R. Jones, Wisconsin Professional Land Surveyor No S-2508, hereby certify that the corner location shown on this record was determined by me, and that this U.S. Public Land Survey Monument Record is correct and complete to the best of my knowledge and belief.