

CERTIFIED LAND CORNER RESTORATION

State of Wisconsin }
 County of Oneida } ss.

I William Immich, do hereby certify that on the _____ day of _____, 19____, I found evidence of the South 1/4 corner of Section 10 Township 37 North Range 10 East, Fourth Principal Meridian, as described hereon; and that from this evidence I established a new monument and accessories as described hereon to perpetuate the original location of this corner:

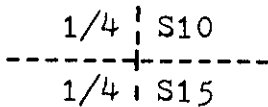
Description of original monument and accessories and subsequent restorations:

none
 Ran line from S 1/16 SW Sec. 10 to S.E. cor. Sec. 11
 Reset from survey by J.M. Abernathy 1950.
 See Genisot and Associates Inc. Dwg. 805-1.

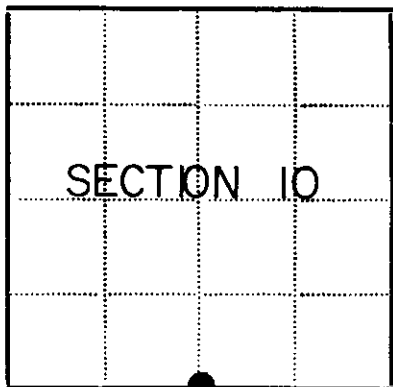
Description of corner evidence found: none

Description of monument and accessories I established to perpetuate the location of this corner:

Set capped county marker stamped



bearing trees;
 4" cherry N 12° W 13.50'
 14" Aspen N 85° E 9.90'
 4" cherry S 55° E 13.78'
 1" spruce N 32° E 12.4'



● - Corner monument restored
 □ -

Resident witnesses Mark J. Hendrickson

Dated at Rhinelanders Wisconsin, this 11 day of August 1978.

Signature William Immich Title Registered Land Surveyor
 (County Surveyor, Registered Land Surveyor, or other duly authorized official)

Surveyors Registration No. S 1383

Office of Register of Deeds County of Oneida

I hereby certify that the within instrument was filed in this office for record on the 17th day of September 1982, and was filed in Book No. _____ Page No. _____ of County Records.

Signature Louis George Fuchs Title REGISTER OF DEEDS

Township 37 North, Range 10 East, Section 10, Index No. _____, Page No. _____

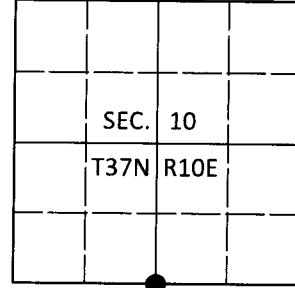
5-15

U.S. PUBLIC LAND SURVEY MONUMENT RECORD

Note: This form is intended and designed to fulfill all requirements of Wisconsin Administrative Code, Chapter A-E 7.08 U.S. Public Land Survey Monument Record (3)(a-i).

(a) CORNER LOCATION
 1/4 Cor. of Secs. 10 & 15
 Township 37 North
 Range 10 East of the 4th P.M.
 Town of Stella
 County of Oneida

WISCRS - Oneida County
 N: 187,233.91 USft
 E: 310,120.34 USft
 Datum: NAD83(2011)
 GNSS Method: RTN - Direct
 GNSS Control: WISCORS VRS



(b) HISTORY OF ORIGINAL CORNER ESTABLISHMENT

Original Surveyor: _____ Original Accessories: _____
 Date of Survey Commenced: _____ See previous monument record(s)
 Completed: _____

(b)(f)(g)(h) Description of monument found at this corner and if it was accepted, state all evidence (material, testimonial, occupational, plats, records, other monuments) used as a basis for accepting. If not accepted or if nothing was found, state evidence used as basis for establishing location. If re-established through lost corner proportionate methods, indicate all monuments, distances and directions used to establish. Indicate type of monument and sign post found or set.

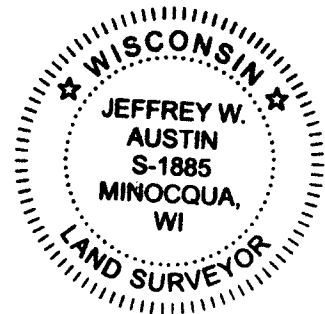
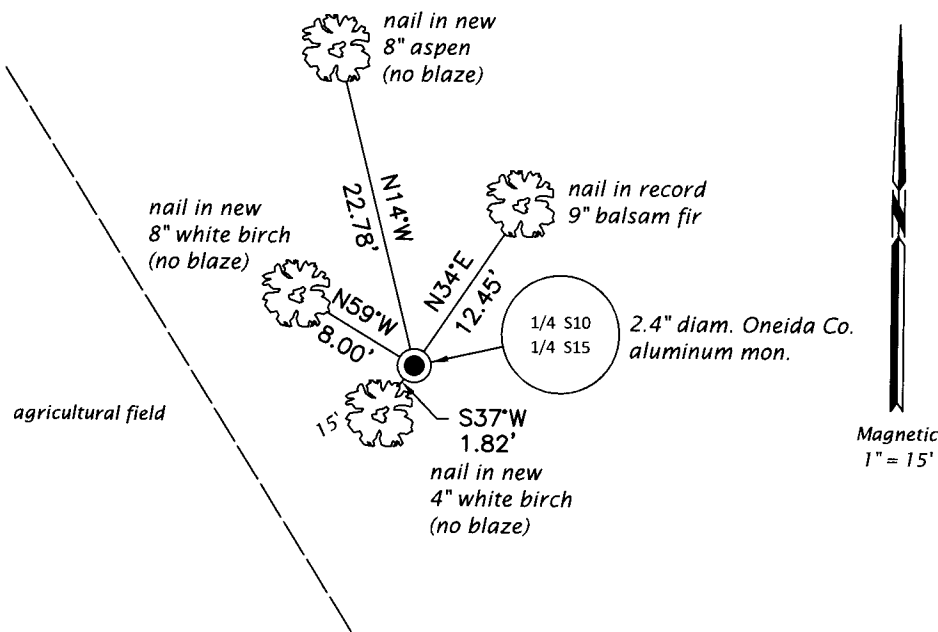
This is a perpetuation of the following monument record(s) that comprise a complete history of the corner:

Aug. 11, 1978: Certified Land Corner Restoration No. 3710100020 by William G. Immich, RLS

June 21, 2019: I found and accepted the record monument, a 2.4" diam. aluminum pipe with a 3.3" diam. Oneida Co. aluminum cap projecting 18" above the ground surface. The record cherry bearing trees are gone. The record aspen bearing tree is now a stump. I found or established accessories as shown below. I found a white vinyl sign post bearing South, 1.1 ft.

The coordinate value shown has been verified by at least one of the following methods: 1) comparison to a previously GPS determined published value; 2) the value is the average of two or more GPS observations at a markedly different time; 3) one or more distances were measured back to the GPS observed corner from temporary GPS observed offset locations.

(c)(d)(e) Plan view of corner with ties to at least 4 witness monuments. If in disagreement with previously established corner, show the distances between the two corners and also indicate the ties to the disputed.

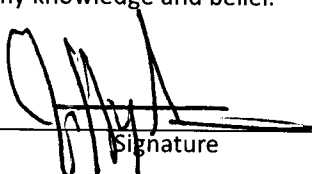


REGISTER OF DEEDS OFFICE
 ONEIDA COUNTY
 FILED

AUG 28 2019

KYLE J. FRANSON
 REGISTER OF DEEDS

(i) I, Jeffrey W. Austin, Professional Land Surveyor No. S-1885, hereby certify that the corner location on this record was determined by me or under my direction and control and that this U.S. Public Land Survey Monument Record is correct and complete to the best of my knowledge and belief.


 Signature

JUL. 19, 2019
 Date