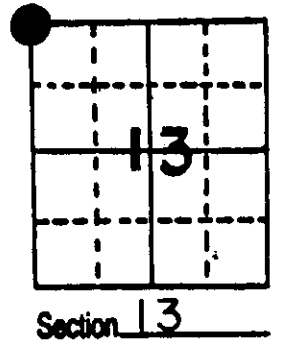


U.S. PUBLIC LAND SURVEY MONUMENT RECORD

Note: This form is intended and designed to fulfill all requirements of Wisconsin Administrative Code, Chapter A-E 5.02, U.S. Public Land Survey Monument Record (3) (a) (b) (c) (d) (e) (f) (g) (h) (i). An additional sheet may be added if necessary to conform with said requirements.

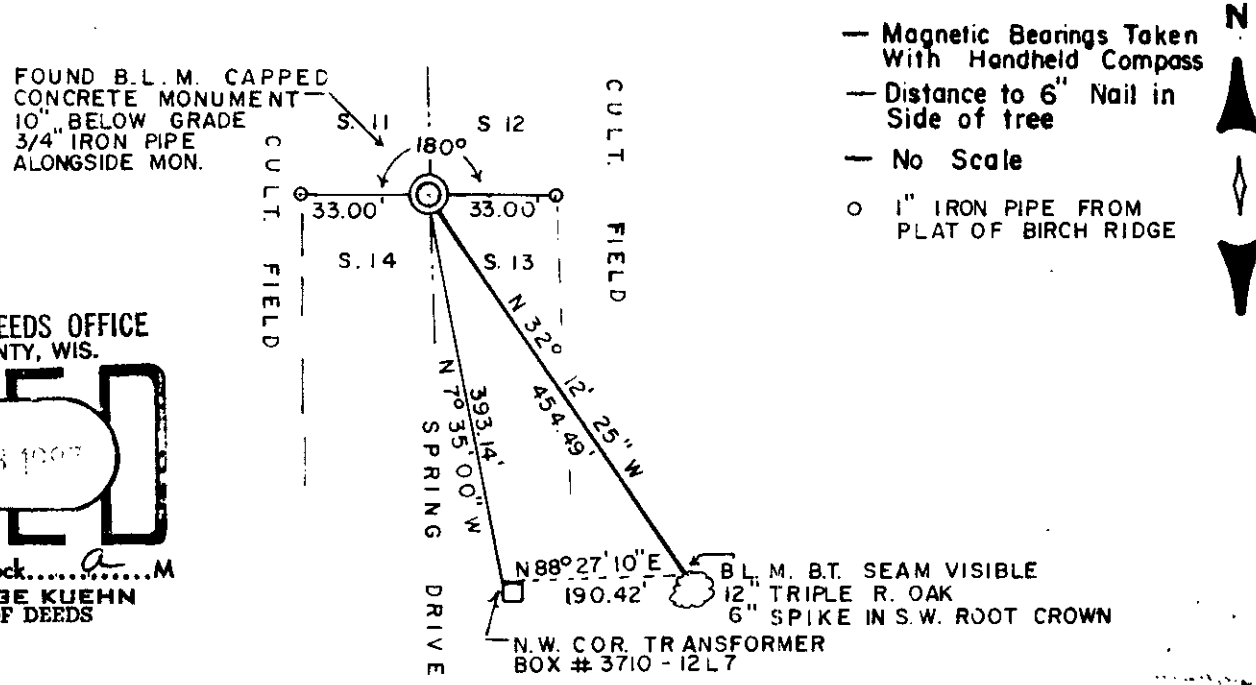
(a) Corner location: Township 37 North
 Range 10 East/West
 Town/City/Village STELLA
 County ONEIDA



(b) (f) (g) (h) Description of monument found at this corner and if it was accepted, state all evidence (material, testimonial, occupational, plats, records, other monuments) used as a basis for accepting. If not accepted or if nothing was found, state evidence used as basis for establishing location. If reestablished through lost corner proportionate methods, indicate all monuments, distances and directions used to establish.

- 1859 W. E. Daughterly set original corner
- 1929 H.C. Hall drive a steel auto axle at original corner of 11-12-13-14, comes in east ditch of N-S turnpipe B.T.s W.Pine Stump N 63 E 11.0, Tall lone spruce 20" S 46 W 72.4, Distance to S.W. cor 13 78.657chains.
- 1959 Hugh B. Crawford a surveyor with the Bureau of Land Management executed a dependent resurvey in S.12, T 37 N. R10 E and for the corner of 11-12-13-14 found a rusted auto exhaust pipe at west edge of a field road, replaced the pipe with a brass capped concrete monument. R. Oak 7" S28-27E 689lks.
- 1987 I found the B.L.M. concrete monument on west edge of field road and the B.L.M. B.T.. I witnessed the corner as shown below. Distance south to S.W. corner 13 5190.80'

(c) (d) (e) Plan view of corner with ties to at least 4 witness monuments. If in disagreement with previously established corner, show the distances between the two corners and also indicate the ties to the disputed corner.

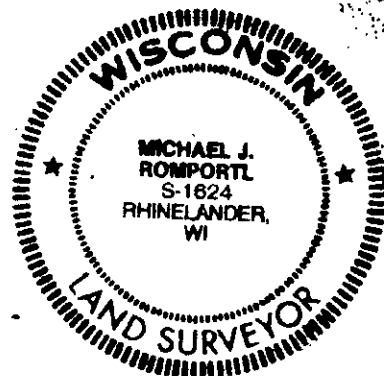


REGISTER OF DEEDS OFFICE
 ONEIDA COUNTY, WIS.
FILED
 APR 3 1987
 At 8:00 O'clock a.m.
 DORIS VERAGE KUEHN
 REGISTER OF DEEDS

(i) I, MICHAEL J. ROMPORTL
 (type or print name) certify that the corner location on this record was determined by me or under my direction and control and that this U.S. Public Land Survey Monument Record is correct and complete to the best of my knowledge and belief.

Michael J. Romportl March 30, 1987
 Signature Date

GENISOT & ASSOCIATES INC.
 1512 EAGLE ST., RHINELANDER, WIS.



Index No
 5-21

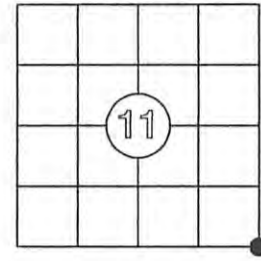
3710110000

US PUBLIC LAND SURVEY MONUMENT RECORD

Per Wis. Admin. Code § A-E 7.08, a U.S. public land survey monument record shall be prepared and filed with the county survey records as part of any land survey within 60 days of setting or accepting the corner, which includes or requires the perpetuation, restoration, or use of a U.S. public land survey corner and when any of the situations in Wis. Admin. Code § A-E 7.08(1)(a), (b) or (c) arise.

<u>3(a) Corner Identification:</u>	<u>Observed Coordinates:</u>	<u>Published Coordinates:</u>
Found B.L.M. brass disk in a concrete monument	N: 186810.77 E: 318290.32	N: 186810.704 (ΔN: 0.07) E: 318290.364 (ΔE: 0.04)
Southeast corner	Datum: NAD83(2011)	
Section 11	GNSS Control: WISCRS	
Township 37 North	NETWORK	
Range 10 East	GNSS Method: RTK-Direct	
4th Principal Meridian	Verification Method: 2	
Town of Stella		
Oneida Co., WI		

CORNER ID:
3710110000



Establishment of Original Corner

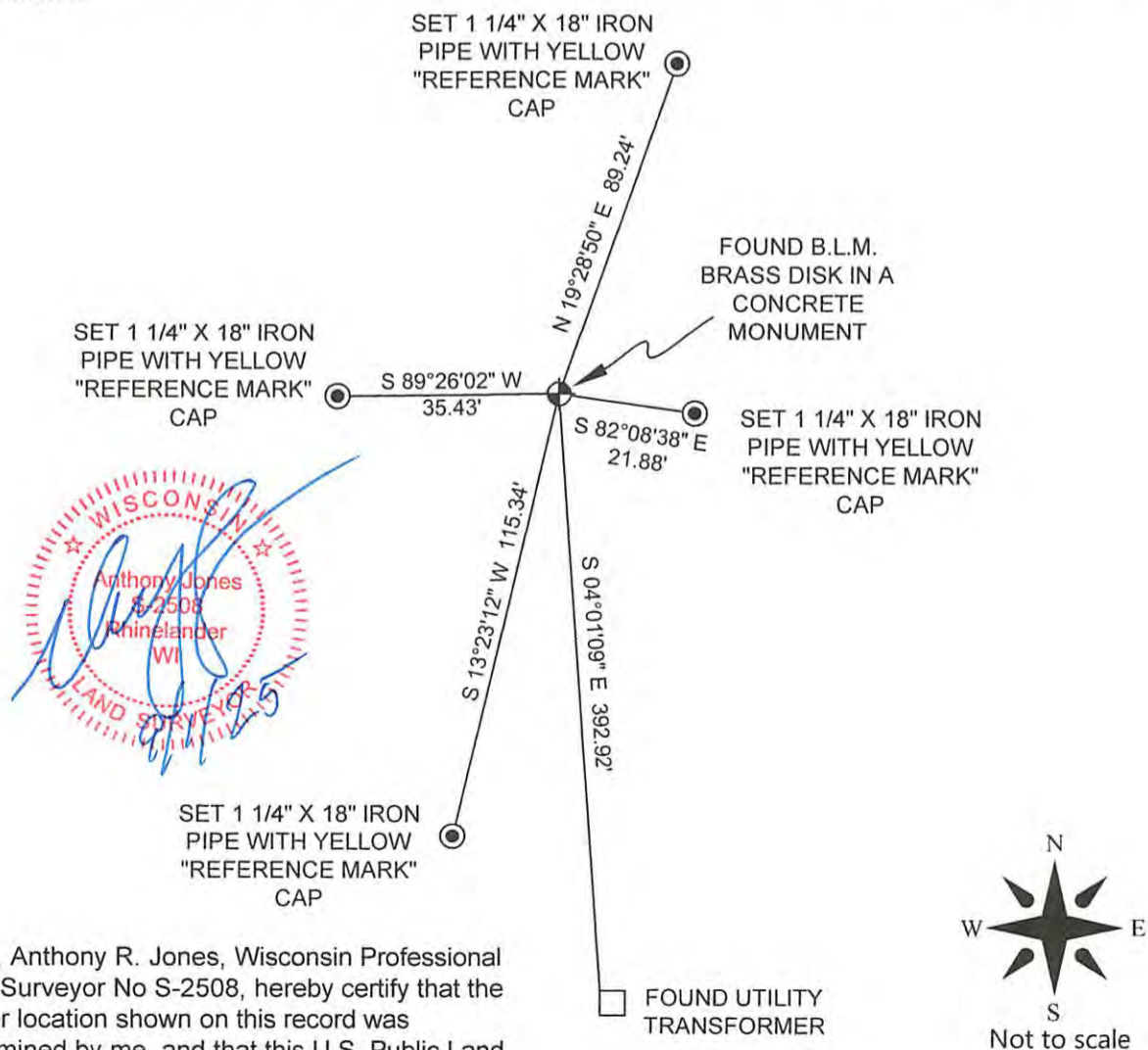
Corner Set: Wood Post
Original Surveyor: Wm. Daugherty
Date of Survey: June, 1863
White pine 10", N 60° E, 11 lks
Sugar maple 10", S 83° W, 26 lks

- The coordinate value has been verified by at least one of the following methods:
1. Comparison to a previously determined GNSS determined published value;
 2. The value is the average of two or more GNSS observations at markedly different times;
 3. One or more distances were measured to the corner from offset GNSS observed locations, set and observed per No. 2 methods.

3(b)((c)(d)(f)(g)(h)

This is a continuation of a previous USPLSS Monument Record by Surveyor Michael Romportl, S-1624 (1987).

- 3/30/1987 - Monument record by Michael Romportl, S-1624, states he found a B.L.M. brass capped concrete monument and made witnesses.
- 11/14/1991 - Todd Loftus, S-1523, finds a BLM monument.
- 7/11/1992 - Glen Barker, S-1682, finds a GLO monument.
- 5/02/2002 - Devon Vanden Heuvel, S-1795, found a 1" iron pipe
- 8/23/2006 - Russ Brown, S-2148, finds a brass capped concrete monument.
- 9/1/2025 - I, Anthony Jones, S-2508, dug down 6" below the surface of the gravel road and found the brass B.L.M. disk set in a concrete monument with a 3/4" iron pipe driven alongside. I found the utility transformer that Romportl used, but all of the other witnesses are gone. I set four new, intervisible, 1 1/4" x 18" iron pipes with a yellow "reference mark" cap, as shown below. Measurements were made to the witnesses with a Carlson NR3 receiver.



3(i) I, Anthony R. Jones, Wisconsin Professional Land Surveyor No S-2508, hereby certify that the corner location shown on this record was determined by me, and that this U.S. Public Land Survey Monument Record is correct and complete to the best of my knowledge and belief.