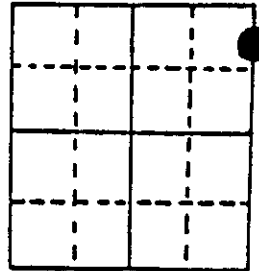


U.S. PUBLIC LAND SURVEY MONUMENT RECORD

Note: This form is intended and designed to fulfill all requirements of Wisconsin Administrative Code, Chapter A-E 7.08 U.S. Public Land Survey Monument Record (3) (a) (b) (c) (d) (e) (f) (g) (h) (i). An additional sheet may be added if necessary to conform with said requirements.

(a) Corner location: Township 37 North
 Range 10 East/West

Town/City/Village Stella
 County Oneida



Section 11

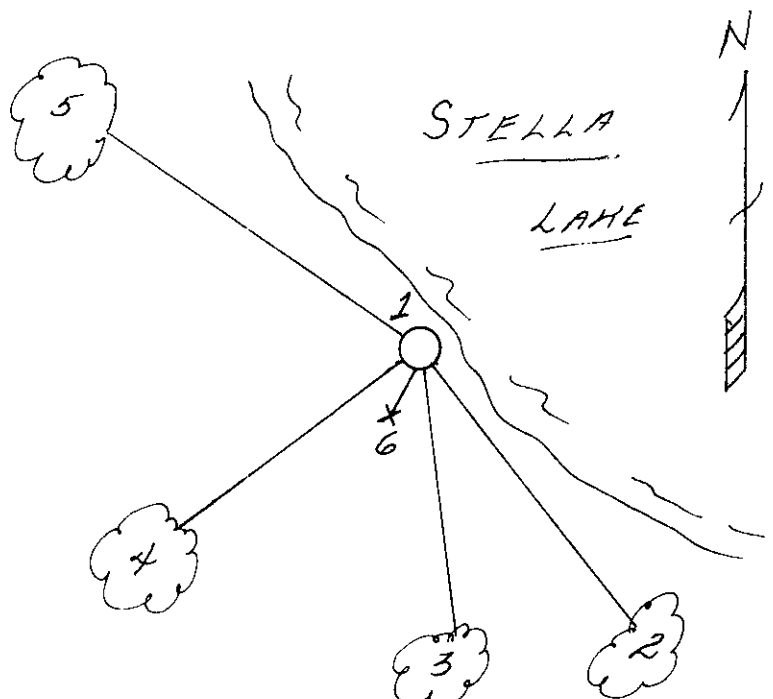
(b) (f) (g) (h) Description of monument found at this corner and if it was accepted, state all evidence (material, testimonial, occupational, plats, records, other monuments) used as a basis for accepting. If not accepted or if nothing was found, state evidence used as basis for establishing location. If reestablished through lost corner proportionate methods, indicate all monuments, distances and directions used to establish. Indicate type of monument found or set and sign post.

- 1863 - William Daugherty established this corner and set a wood post and BTs:
 12" Birch, S45°E, 19 Links 12" Birch, S45°W, 4 Links
- 1959 - BLM conducted a Dependent Resurvey in Section 12, restored this corner. They placed a brass capped monument with BTs:
 6" White Birch, S6°E, 12.48' 6" White Birch, S43°W, 11.20'
- 8/2/1989 - Milo E. Stefan found brass capped monument with both BTs alive and in excellent condition. We made two new BTs and placed plastic sign post.

(c) (d) (e) Plan view of corner with ties to at least 4 witness monuments. If in disagreement with previously established corner, show the distances between the two corners and also indicate the ties to the disputed corner.

- 1) 2 1/2" x 30" brass capped iron pipe monument
- 2) 4" Hemlock, S41°E, 9.34'
- 3) 6" White Birch, S6°E, 12.48'
- 4) 6" White Birch, S43°W, 11.20'
- 5) 5" Hemlock, N51°W, 21.79'
- 6) Plastic sign post, SW, .9'

Distances to nail in side of BTs.
 BTs scribed "BT" in stump blaze.



(i) I, Milo E. Stefan
 (type or print name) certify that the corner location on this record was determined by me or under my direction and control and that this U.S. Public Land Survey Monument Record is correct and complete to the best of my knowledge and belief.

Milo E. Stefan 8/10/89
 Signature Date



Index No. E, F - 21

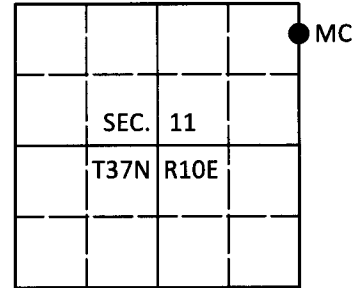
3710113600

U.S. PUBLIC LAND SURVEY MONUMENT RECORD

Note: This form is intended and designed to fulfill all requirements of Wisconsin Administrative Code, Chapter A-E 7.08 U.S. Public Land Survey Monument Record (3)(a-i).

(a) CORNER LOCATION
 Meander Cor. of Secs. 11 & 12
 Township 37 North
 Range 10 East of the 4th P.M.
 Town of Stella
 County of Oneida

WISCORS - Oneida County
 N: 191,443.75 USft
 E: 318,270.91 USft
 Datum: NAD 83(2011)
 GNSS Method: RTN - Offset
 GNSS Control: WISCORS VRS



(b) HISTORY OF ORIGINAL CORNER ESTABLISHMENT

Original Surveyor:

Original Accessories:

Date of Survey

Commenced:
 Completed:

See previous USPLS Monument Record

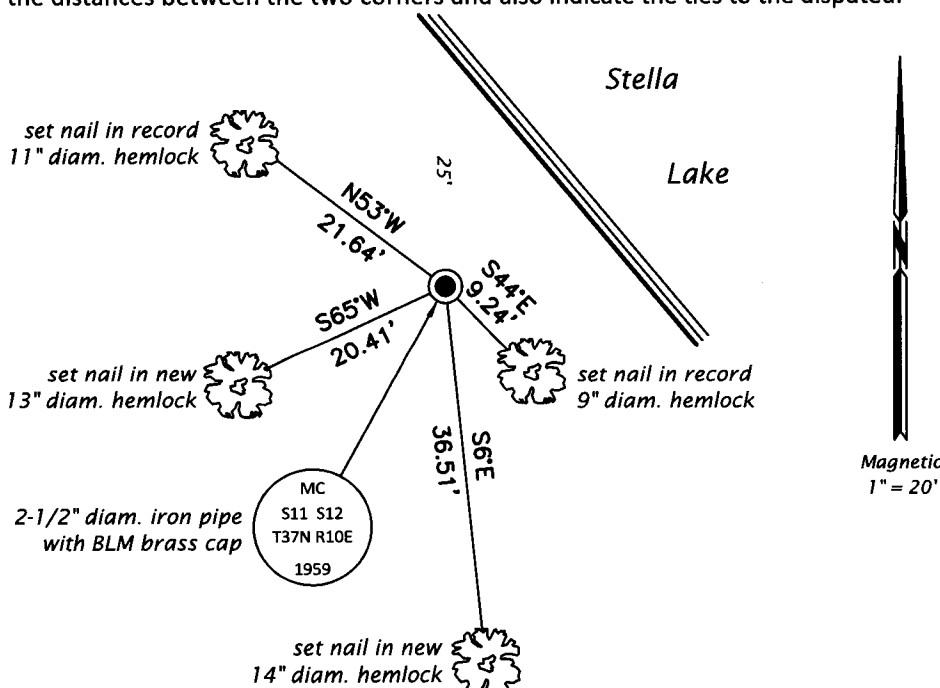
(b)(f)(g)(h) Description of monument found at this corner and if it was accepted, state all evidence (material, testimonial, occupational, plats, records, other monuments) used as a basis for accepting. If not accepted or if nothing was found, state evidence used as basis for establishing location. If re-established through lost corner proportionate methods, indicate all monuments, distances and directions used to establish. Indicate type of monument and sign post found or set.

This is a perpetuation of a previous USPLS Monument Record by Milo E. Stefan, RLS dated August 10, 1989 and filed in the office of the Oneida County Register of Deeds. A complete history of the corner can be found on the previous monument record. I accept the previous location as a true and faithful perpetuation or reestablishment of the original corner location and further perpetuate it as follows.

March 15, 2018: I found and accepted the record monument, a 2-1/2" diam. iron pipe with a 3-1/4" diam. BLM brass cap flush with the ground surface. Record bearing tree 4 is now a stump; tree 3 is standing dead. I found or established accessories as shown below and found a white vinyl sign post bearing Southwest, 0.9 ft. dist.

The coordinate value shown has been verified by at least one of the following methods: 1) comparison to a previously GPS determined published value; 2) the value is the average of two or more GPS observations at a markedly different time; 3) one or more distances were measured back to the GPS observed corner from temporary GPS observed offset locations.

(c)(d)(e) Plan view of corner with ties to at least 4 witness monuments. If in disagreement with previously established corner, show the distances between the two corners and also indicate the ties to the disputed.



REGISTER OF DEEDS OFFICE
 ONEIDA COUNTY
 FILED

APR 12 2018

KYLE J. FRANSON
 REGISTER OF DEEDS

(i) I, Jeffrey W. Austin, Professional Land Surveyor No. S-1885, hereby certify that the corner location on this record was determined by me or under my direction and control and that this U.S. Public Land Survey Monument Record is correct and complete to the best of my knowledge and belief.

[Handwritten Signature]
 Signature

4 APR 2018
 Date