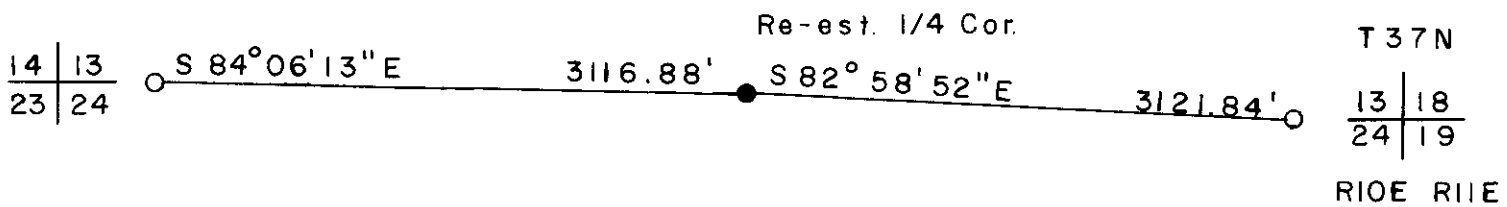
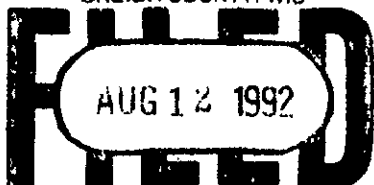


This was accepted as the best available evidence and is harmoniously related to existing condition.

Set a 2-1/4" Oneida County Aluminum Monument with 3-1/4" alloy cap in old fence post hole.



REGISTER OF DEEDS OFFICE
ONEIDA COUNTY, WIS



At _____ O'Clock _____ M
THOMAS H. LEIGHTON
REGISTER OF DEEDS