

U.S. PUBLIC LAND SURVEY MONUMENT RECORD

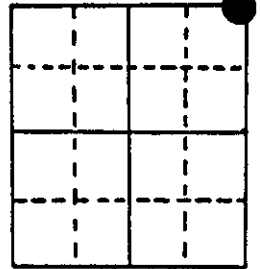
Note: This form is intended and designed to fulfill all requirements of Wisconsin Administrative Code, Chapter A-E 5.02, U.S. Public Land Survey Monument Record (3) (a) (b) (c) (d) (e) (f) (g) (h) (i). An additional sheet may be added if necessary to conform with said requirements.

(a) Corner location: Township 37 North

Range 10 East/West

Town/City/Village OF STELLA

County OF ONEIDA

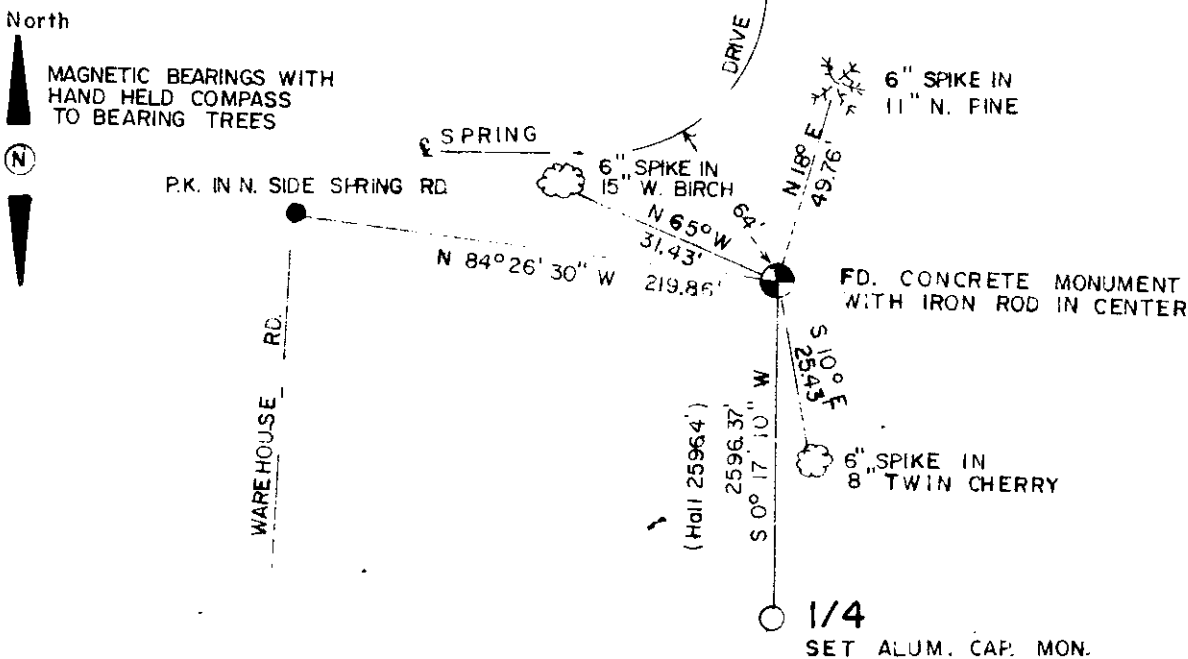


Section 23

(b) (f) (g) (h) Description of monument found at this corner and if it was accepted, state all evidence (material, testimonial, occupational, plats, records, other monuments) used as a basis for accepting. If not accepted or if nothing was found, state evidence used as basis for establishing location. If reestablished through lost corner proportionate methods, indicate all monuments, distances and directions used to establish.

- = 1863 W.E. Daughterty set orig. corner.
- 1929 Harry C. Hall recovered original Section Corner, calls for an 4x4 scribed pipe post, iron pipe, pile of rocks; burned W. pine stub 40" N 69° W 28.4'; burned W. Pine stump N62° W 107.2'; W. Birch N 46° W 33.7' center of N-S road bears west 218'
- At this corner I found a concrete monument with an iron rod in center. Although this concrete is not what Hall calls for it is similar to monuments he set in other surveys in the 1930's and the distances check to the 1/16 corner west and the 1/4 corner south. I did not find any of Halls witnesses. I accepted the concrete monument and referenced as shown below.

(c) (d) (e) Plan view of corner with ties to at least 4 witness monuments. If in disagreement with previously established corner, show the distances between the two corners and also indicate the ties to the disputed corner.

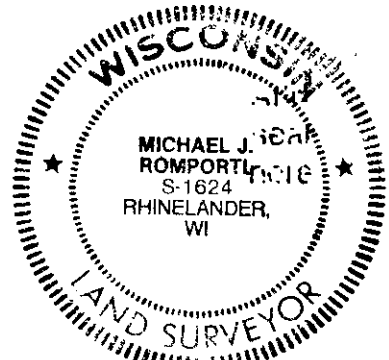


(i) I, MICHAEL J. ROMPORTL R.L.S. 1624

(type or print name) certify that the corner location on this record was determined by me or under my direction and control and that this U.S. Public Land Survey Monument Record is correct and complete to the best of my knowledge and belief.

Michael J. Romportl November 1, 1984
Signature Date

GENISOT & ASSOCIATES, INC
1512 N. EAGLE
RHINELANDER, WIS



Index No.

N-21

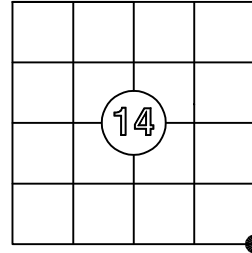
3710140000

US PUBLIC LAND SURVEY MONUMENT RECORD

Per Wis. Admin. Code § A-E 7.08, a U.S. public land survey monument record shall be prepared and filed with the county survey records as part of any land survey within 60 days of setting or accepting the corner, which includes or requires the perpetuation, restoration, or use of a U.S. public land survey corner and when any of the situations in Wis. Admin. Code § A-E 7.08(1)(a), (b) or (c) arise.

3(a) Corner Identification:	<u>Observed Coordinates:</u>	<u>Published Coordinates:</u>
Found 1/2" iron rod in a concrete monument	N: 181637.71 E: 317858.42	N: 181637.702 (ΔN: 0.01) E: 317858.416 (ΔE: 0.00)
Southeast corner	Datum: NAD83(2011)	
Section 14	GNSS Control: WISCRS NETWORK	
Township 37 North	GNSS Method: RTK-Direct	
Range 10 East	Verification Method: 2	
4th Principal Meridian		
Town of Stella		
Oneida Co., WI		

CORNER ID:
3710140000



Establishment of Original Corner

Corner Set: Wood Post
Original Surveyor: Wm. Daugherty
Date of Survey: June, 1863
White pine 10", N 60° E, 11 lks
Sugar maple 10", S 83° W, 26 lks

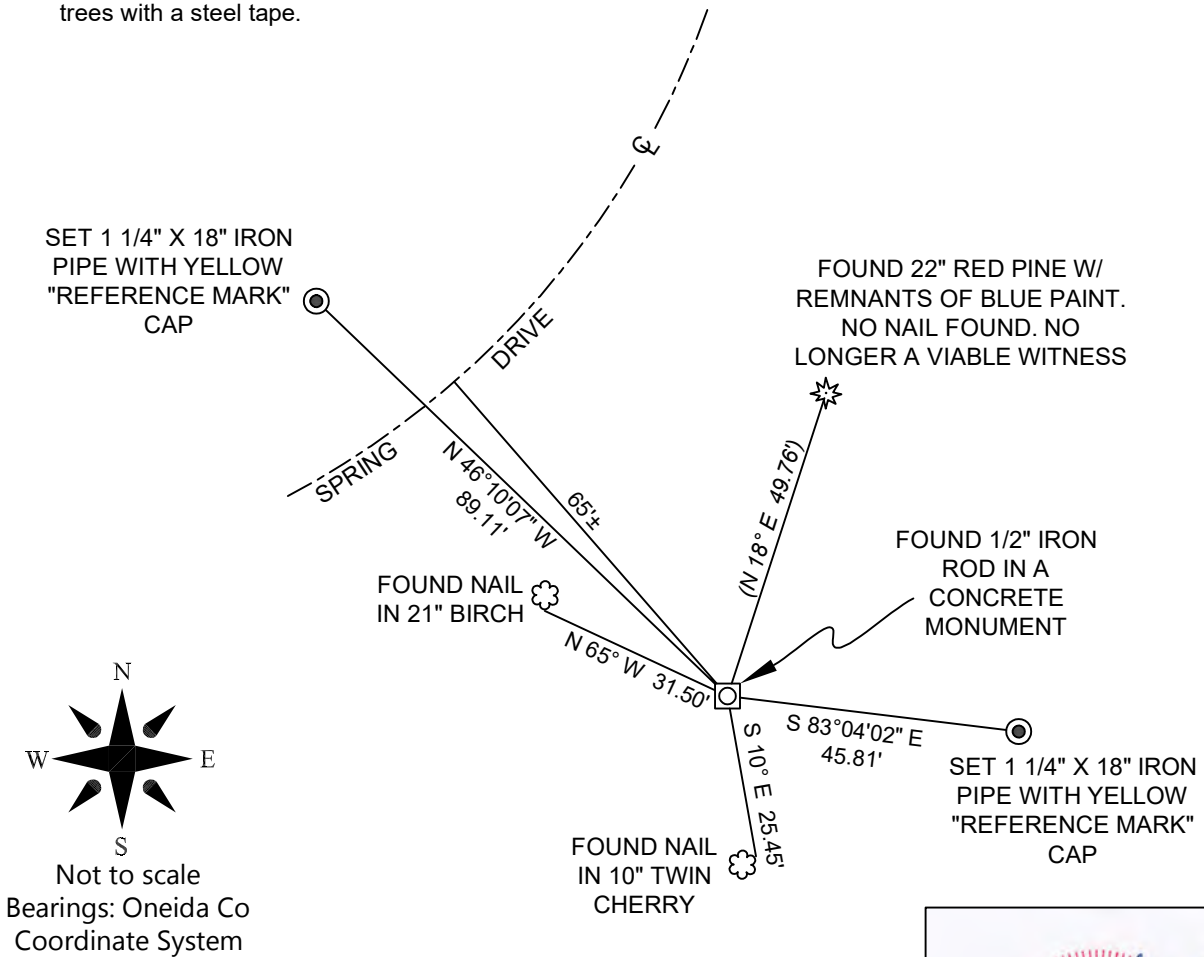
The coordinate value has been verified by at least one of the following methods:

1. Comparison to a previously determined GNSS determined published value;
2. The value is the average of two or more GNSS observations at markedly different times;
3. One or more distances were measured to the corner from offset GNSS observed locations, set and observed per No. 2 methods.

3(b)(c)(d)(f)(g)(h)

This is a continuation of a previous USPLSS Monument Record by Surveyor Michael Romportl, S-1624 (1984).

- 3/30/1984 - Monument record by Michael Romportl, S-1624, states he found a concrete monument with an iron rod in the center and made witnesses.
- 7/11/1992 - Glen Barker, S-1682, finds a 6"x6" concrete monument with brass cap.
- 8/23/2006 - Russ Brown, S-2148, finds a brass capped concrete monument.
- 7/30/2010 - Todd Lofus, S-1523, finds a cement monument.
- 9/1/2025 - I, Anthony Jones, S-2508, found the 1/2" iron rod in the concrete monument, as described by Romportl in 1984. I found the spike in the cherry to the southeast and the birch to the northwest, both in good condition. I also found the red pine to the northeast, but did not find the nail. Due to terrain and vegetation, this is no longer a viable witness. I set two new, intervisible, 1 1/4" x 18" iron pipes with a yellow "reference mark" cap, as shown below. Measurements were made to the witnesses with a Carlson NR3 receiver and to the nails in the trees with a steel tape.



3(i) I, Anthony R. Jones, Wisconsin Professional Land Surveyor No S-2508, hereby certify that the corner location shown on this record was determined by me, and that this U.S. Public Land Survey Monument Record is correct and complete to the best of my knowledge and belief.

