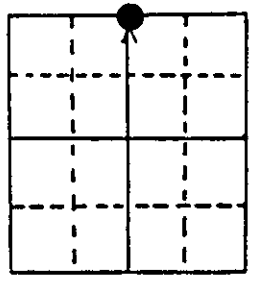


# U.S. PUBLIC LAND SURVEY MONUMENT RECORD

Note: This form is intended and designed to fulfill all requirements of Wisconsin Administrative Code, Chapter A-E 7.08 U.S. Public Land Survey Monument Record (3) (a) (b) (c) (d) (e) (f) (g) (h) (i). An additional sheet may be added if necessary to conform with said requirements.

(a) Corner location: Township 37 North  
 Range 10 East ~~#####~~  
 Town/City/Village ##### OF STELLA  
 County ONIEDA

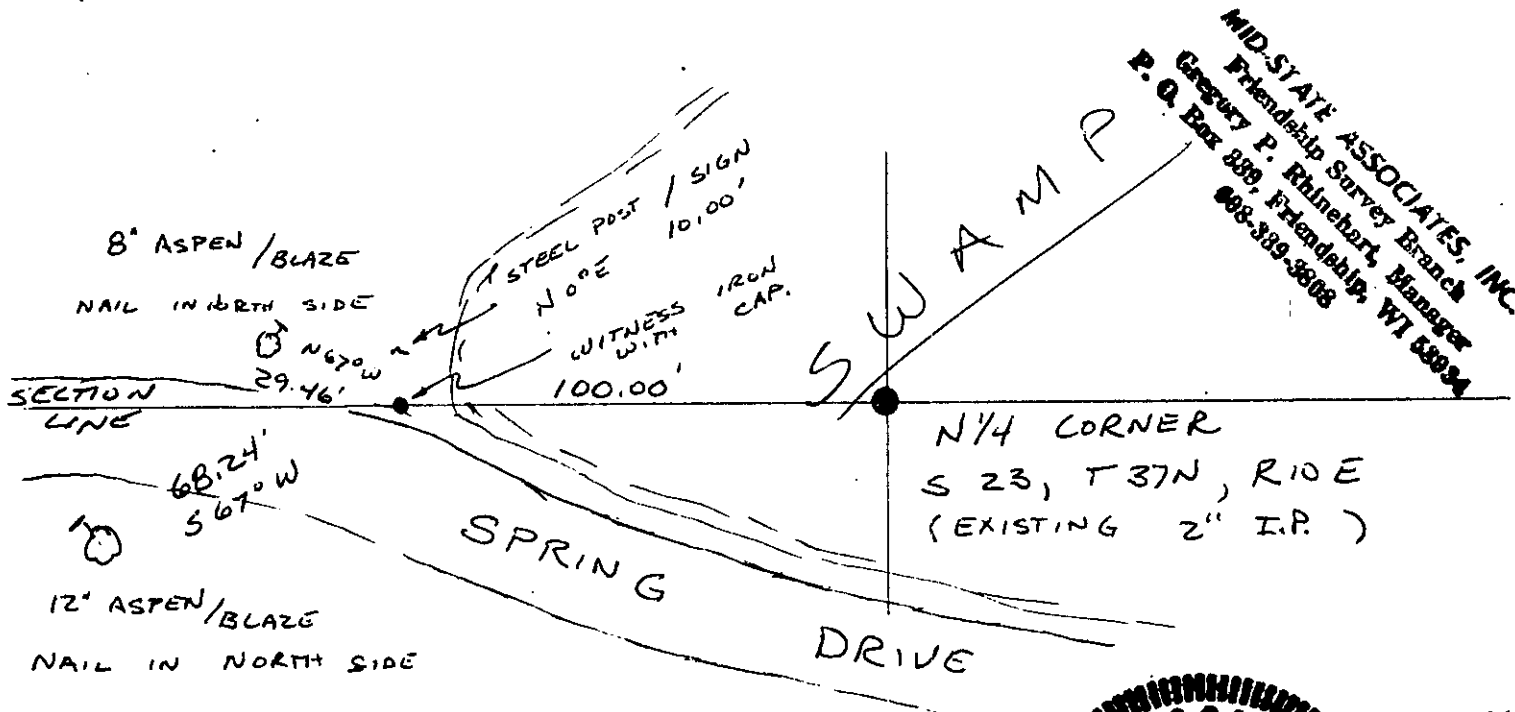


Section 23

(b) (f) (g) (h) Description of monument found at this corner and if it was accepted, state all evidence (material, testimonial, occupational, plats, records, other monuments) used as a basis for accepting. If not accepted or if nothing was found, state evidence used as basis for establishing location. If reestablished through lost corner proportionate methods, indicate all monuments, distances and directions used to establish.

FOUND 2" IRON PIPE BELIEVED PLACED BY HARRY HALL ON AUGUST 1, 1929 AS RECORDED IN PAGES 29 AND 80 OF HIS NOTES FILED IN THE ONIEDA COUNTY COURTHOUSE. AFTER TRAVERSING ALL OF SECTION 23 AND ANALYZING MY NOTES AND HALL'S NOTES TO DETERMINE CORNER LOCATION, I FOUND THE PIPE IN 3 FEET OF WATER ABOUT 1.5 FEET FROM COMPUTED LOCATION. I RAISED THE IRON TO THE SURFACE AND SET A WITNESS IRON 100.00 FEET WEST ON THE SECTION LINE.

(c) (d) (e) Description of corner with ties to at least 4 witness monuments. If in disagreement with previously established location, show the distances between the two corners and also indicate the ties to the disputed corner.



**MID-STATE ASSOCIATES, INC.**  
 Friendship Survey Branch  
 Gregory P. Rhinehart, Manager  
 P. O. Box 889, Friendship, WI 53934  
 608-389-8608



(i) I, GREGORY P. RHINEHART  
 (type or print name) certify that the corner location on this record was determined by me or under my direction and control and that this U.S. Public Land Survey Monument Record is correct and complete to the best of my knowledge and belief.

Gregory P. Rhinehart JULY 5, 1933  
 Signature Date  
 S-1478

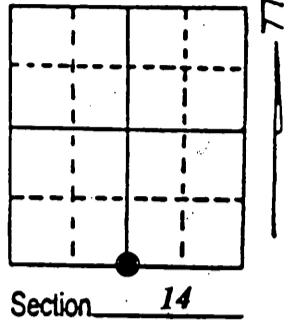
3710140020

Index No. 2-1-1

# U.S. PUBLIC LAND SURVEY MONUMENT RECORD

Note: This form is intended and designed to fulfill all requirements of Wisconsin Administrative Code, Chapter A-E 7.08 U.S. Public Land Survey Monument Record (3) (a) (b) (c) (d) (e) (f) (g) (h) (i). An additional sheet may be added if necessary to conform with said requirements.

(a) Corner location: Township 37 North  
 Range 10 East/West  
 Town/City/Village STELLA  
 County ONEIDA



(b) (f) (g) (h) Description of monument found at this corner and if it was accepted, state all evidence (material, testimonial, occupational, plats, records, other monuments) used as a basis for accepting. If not accepted or if nothing was found, state evidence used as basis for establishing location. If reestablished through lost corner proportionate methods, indicate all monuments, distances and directions used to establish. Indicate type of monument found or set and sign post.

*Aug. 1863 William E. Daugherty West corrected between Sections 14 & 23 39.91 chains Set Quarter Section Post BTS. Tamarack 18, N 35° E, 25'; Tamarack 12, S 5° W, 11.*

*Aug., 1, 1929 Harry Hall set a 2" iron pipe and made Bts. See L.I.O. maps C2551*

*July 5, 1988 Gregory Rhinehart found Hall's iron pipe made BTs. And filed an U.S.P.L.S. Record Sheet index # N-14*

*July 30, 2010 while surveying in section 14, I found Hall's 2" iron pipe in 2.5' of water flush to the ground. I pulled the iron pipe up several inches as the top two inches broke off in my hand. I placed a stamped 5 foot long Oneida County Monument over the iron pipe and left a foot above the water level. I also found Rhinehart's 5/8" iron rod leaning heavily to the East due to road construction. I set a plastic sign post about 1 foot to the west of the corner and referenced as shown below.*

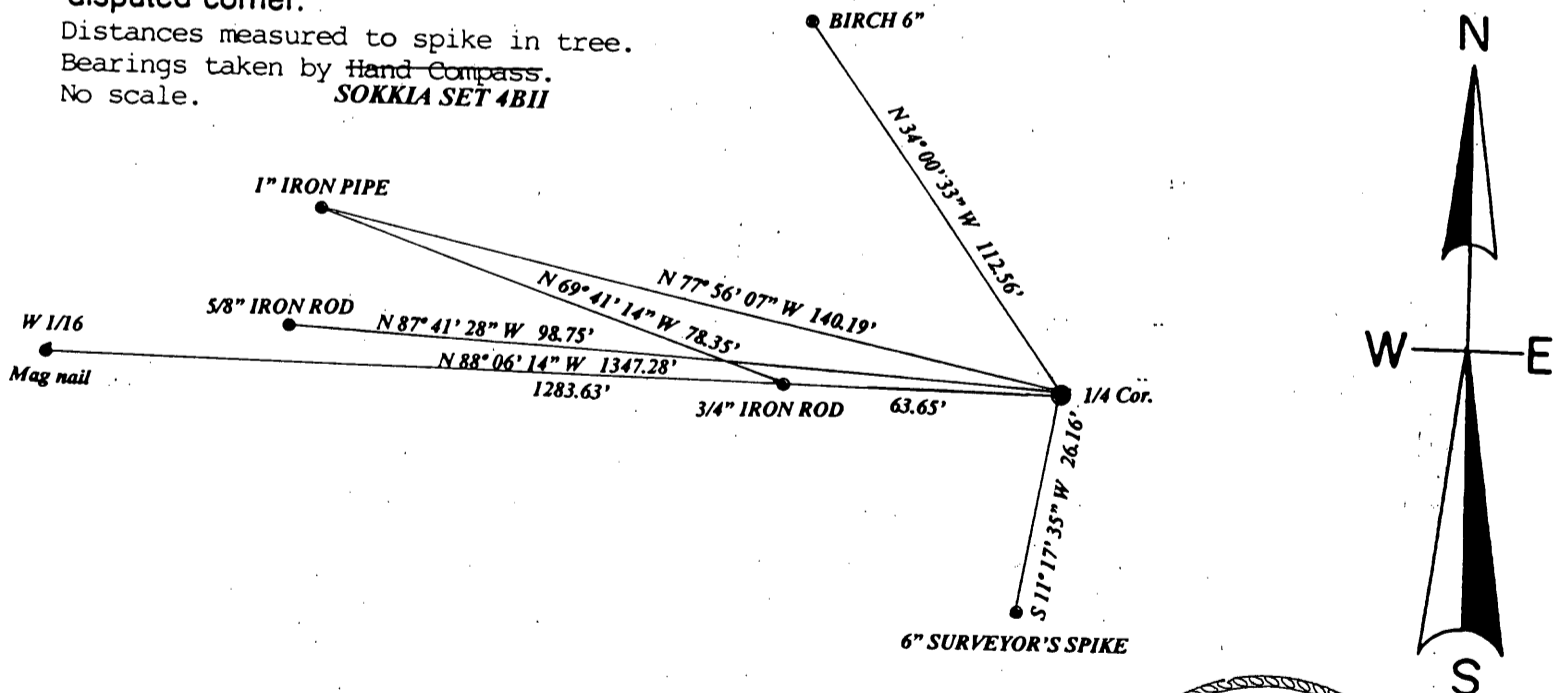
REGISTER OF DEEDS OFFICE  
ONEIDA COUNTY  
FILED

APR 19 2013

AT \_\_\_\_\_ O'CLOCK \_\_\_\_\_ M  
KYLE J. FRANSON  
REGISTER OF DEEDS

(c) (d) (e) Plan view of corner with ties to at least 4 witness monuments. If in disagreement with previously established corner, show the distances between the two corners and also indicate the ties to the disputed corner.

Distances measured to spike in tree.  
Bearings taken by Hand Compass.  
No scale. **SOKKIA SET 4BII**



(i) I, Todd J. Loftus  
 (type or print name) certify that the corner location on this record was determined by me or under my direction and control and that this U.S. Public Land Survey Monument Record is correct and complete to the best of my knowledge and belief.

Todd J. Loftus Signature 11-17-2012 Date



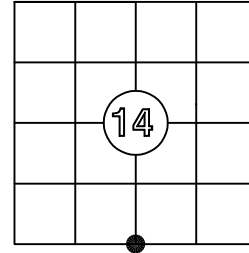
Index No N 19

# US PUBLIC LAND SURVEY MONUMENT RECORD

Per Wis. Admin. Code § A-E 7.08, a U.S. public land survey monument record shall be prepared and filed with the county survey records as part of any land survey within 60 days of setting or accepting the corner, which includes or requires the perpetuation, restoration, or use of a U.S. public land survey corner and when any of the situations in Wis. Admin. Code § A-E 7.08(1)(a), (b) or (c) arise.

**3(a) Corner Identification:** Observed Coordinates:  
 Found Oneida County aluminum monument N: 181725.76  
 South 1/4 corner E: 315173.49  
 Section 10 Datum: NAD83(2011)  
 Township 37 North GNSS Control: WISCRS  
 Range 14 East NETWORK  
 4th Principal Meridian GNSS Method: RTK-Direct  
 Town of Stella Verification Method: 2  
 Oneida Co., WI

**CORNER ID:**  
3710140020



**Establishment of Original Corner**

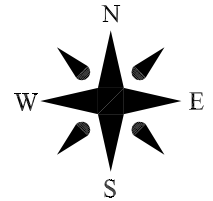
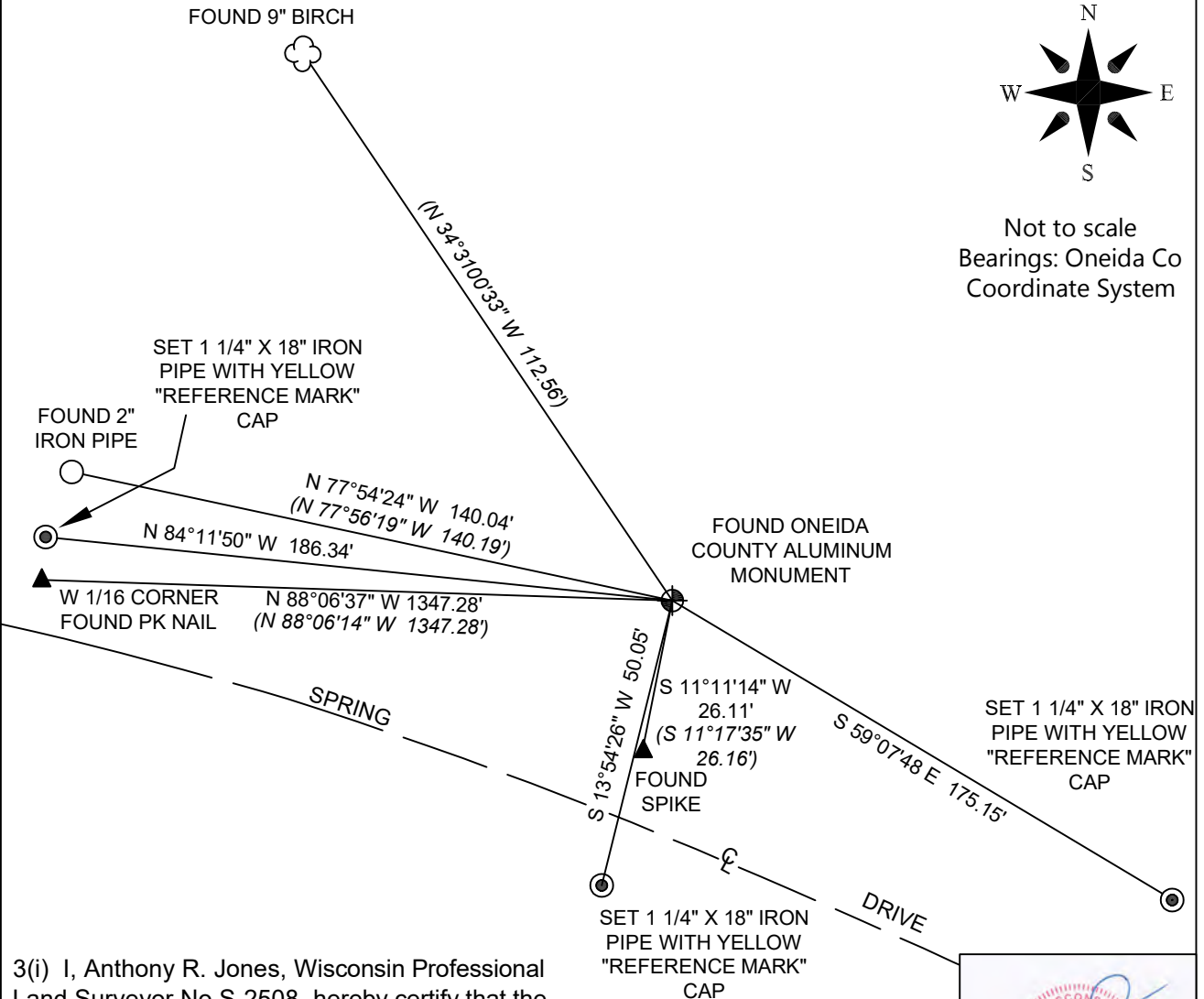
Corner Set: Wood Post  
 Original Surveyor: Wm. Daugherty  
 Date of Survey: August, 1863  
 Tamarack 18", N 35° E, 25 lks  
 Tamarack 12", S 5° W, 11 lks

The coordinate value has been verified by at least one of the following methods:

1. Comparison to a previously determined GNSS determined published value;
2. The value is the average of two or more GNSS observations at markedly different times;
3. One or more distances were measured to the corner from offset GNSS observed locations, set and observed per No. 2 methods.

**3(b)/(c)(d)(f)(g)(h)**

- This is a continuation of a previous USPLSS Monument Records by Surveyor Todd Loftus, S-1523 (2012).
- 7/30/2010 - Todd Loftus, S-1523, finds 2" iron pipe and sets a 5' long Oneida County aluminum monument over the top of it.
- 8/30/2025 - I, Anthony Jones, S-2508, found the Oneida County aluminum monument set by Loftus and the cap is 2.2' above ground. I found the 6" birch, now 9", with upper and lower blazes closed, but due to vegetation and terrain, I was unable to verify the bearing and distance. The 3/4" iron rod is laying in the ditch and the 5/8" iron rod was buried 6" deep and laying flat. I set three new intervisible 1 1/4" by 18" iron pipes with a yellow "reference mark" cap. The aluminum monument and the witnesses were double occupied with a Carlson NR3 receiver.



Not to scale  
 Bearings: Oneida Co  
 Coordinate System

3(i) I, Anthony R. Jones, Wisconsin Professional Land Surveyor No S-2508, hereby certify that the corner location shown on this record was determined by me, and that this U.S. Public Land Survey Monument Record is correct and complete to the best of my knowledge and belief.

