

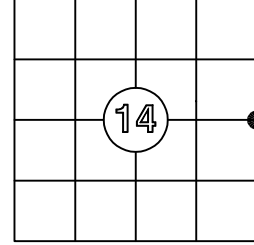


# US PUBLIC LAND SURVEY MONUMENT RECORD

Per Wis. Admin. Code § A-E 7.08, a U.S. public land survey monument record shall be prepared and filed with the county survey records as part of any land survey within 60 days of setting or accepting the corner, which includes or requires the perpetuation, restoration, or use of a U.S. public land survey corner and when any of the situations in Wis. Admin. Code § A-E 7.08(1)(a), (b) or (c) arise.

**3(a) Corner Identification:** Observed Coordinates:  
 Set 5/8" x 24" iron rod N: 184224.240  
 East 1/4 corner E: 318074.37  
 Section 14 Datum: NAD83(2011)  
 Township 37 North GNSS Control: WISCRS  
 Range 10 East NETWORK  
 4th Principal Meridian GNSS Method: RTK-Direct  
 Town of Stella Verification Method: 2  
 Oneida Co., WI

**CORNER ID:**  
3710142000



**Establishment of Original Corner**

Corner Set: Wood Post  
 Original Surveyor: Wm. Daugherty  
 Date of Survey: June, 1863  
 Aspen 10", S 13° E, 28 lks  
 Birch 12", N 50° W, 13 lks

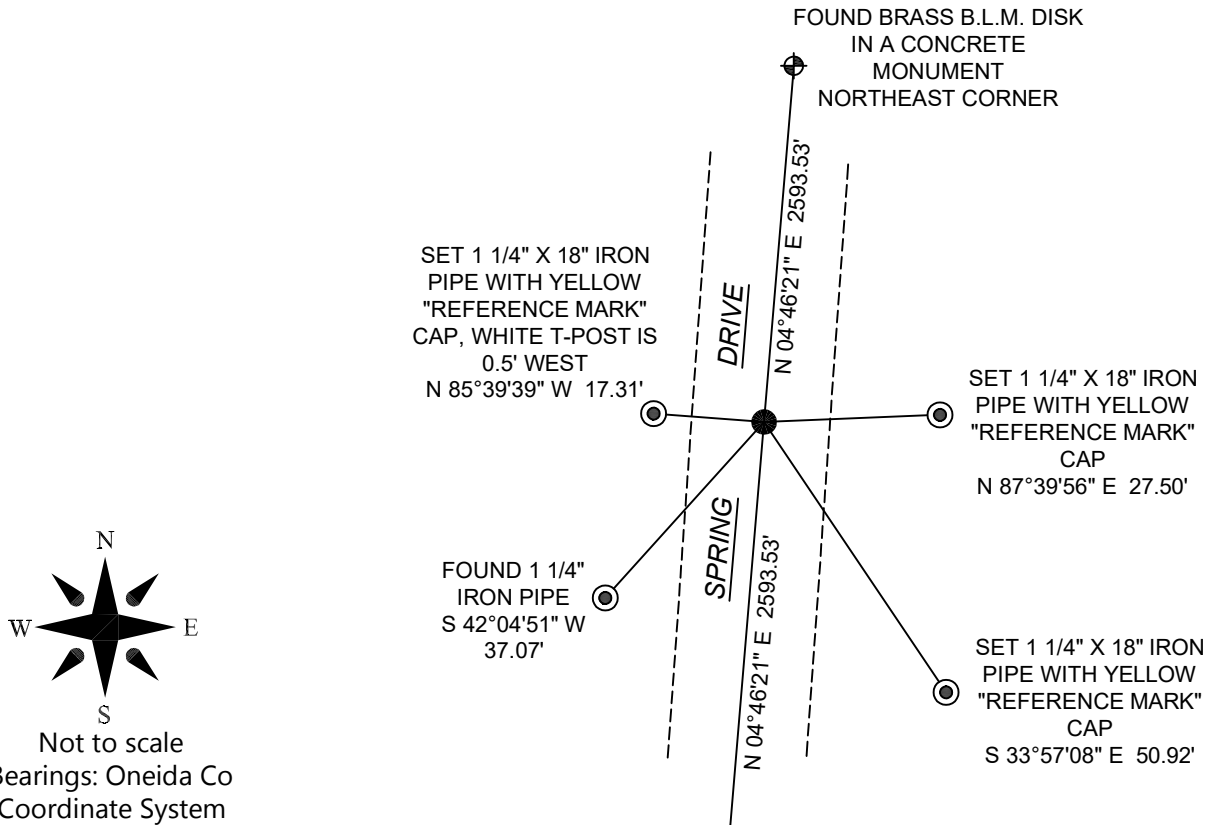
The coordinate value has been verified by at least one of the following methods:

1. Comparison to a previously determined GNSS determined published value;
2. The value is the average of two or more GNSS observations at markedly different times;
3. One or more distances were measured to the corner from offset GNSS observed locations, set and observed per No. 2 methods.

**3(b)(c)(d)(f)(g)(h)**  
**3(b)(c)(d)(f)(g)(h)**

This is a continuation of a previous USPLSS Monument Record by Surveyor William Bandow, S-1182 (1991).

- 2/1/1991 - Monument record by William Bandow, S-1182, states he set an Oneida County monument at the proportional position between the southeast and northeast section corners.
- 7/30/2000 - Todd Loftus, S-1523, finds an Oneida County monument.
- 8/23/2006 - Russ Brown, S-2148, finds an Oneida County monument.
- 3/1/2012 - Todd Loftus, S-1523, finds an Oneida County monument.
- 9/1/2025 - I, Anthony Jones, S-2508, upon initial reconnaissance, did not find anything with a metal detector at this location. I found the white t-post along the west side of the road and Bandow's iron pipe to the southwest. All of his other witnesses are gone. I recovered the northeast and southeast corners of Section 12 and my RTK observations are harmonious with the published Oneida County coordinates. I proceed to dig a hole at the location for the East 1/4, so I could set an iron rod below the surface of the gravel at the proportionate distance between the northeast and southeast section corners. At 4" below the surface of the gravel, I found the remnants of the Oneida County monument. The cap was gone, but the aluminum shaft was in place and at the correct location. I drove a 5/8" x 24" iron rod in the center of the aluminum monument and set new ties, as shown below. Measurements were made to the witnesses with a Carlson NR3 receiver.



3(i) I, Anthony R. Jones, Wisconsin Professional Land Surveyor No S-2508, hereby certify that the corner location shown on this record was determined by me, and that this U.S. Public Land Survey Monument Record is correct and complete to the best of my knowledge and belief.

