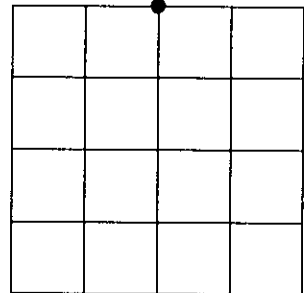


# U.S. PUBLIC LAND SURVEY MONUMENT RECORD

Note: This form is intended and designed to fulfill all requirements of Wisconsin Administrative Code, Chapter A-E 7.08 U.S. Public Land Survey Monument Record (3)(a)(b)(c)(d)(e)(f)(g)(h)(i). An additional sheet may be added if necessary to conform with said requirements.

**(a) CORNER LOCATION:**

N 1/4 corner of Sec. 22 State Plane Coordinates  
 Township 37 North X \_\_\_\_\_  
 Range 10 East Y \_\_\_\_\_  
 Town/~~Oneida~~ Stella Datum Base \_\_\_\_\_  
 County of Oneida



**(b) HISTORY OF ORIGINAL CORNER ESTABLISHMENT**

Original Surveyor: William E. Daugherty Original B.T.'S SECTION 22  
 Date of Survey: Commenced Aug. 21st, 1863 W. Pine 12" N37°E, 6 lks.  
 Completed Aug. 27th, 1863 Y. Pine 15" S50°W, 11 lks.

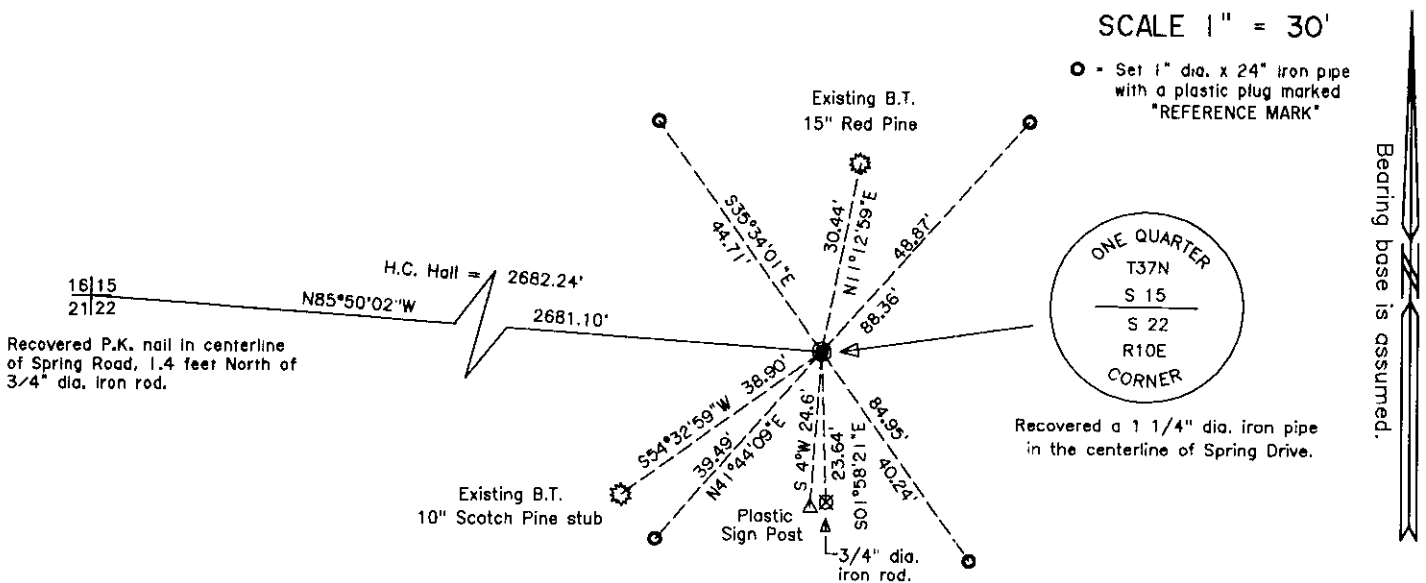
**(f)(g)(h)** Description of monument found at this corner and if it was accepted, state all evidence (material, testimonial, occupational, plats, records, other monuments) used as a basis for establishing location. If not accepted or if nothing was found, state evidence used as basis for establishing location. If reestablished through lost corner proportionate methods, indicate all monuments, distances and directions used to establish. Indicate type of monument and sign post found or set.

1929 – H.C. Hall, Oneida County Surveyor: Unable to find any evidence of original corner, thus "Drive iron pipe and pitch post" at proportionate distance and on line between section corners. Made B.T.'s: W. Pine stump 10" N25°W, 36.0 feet; W. Pine stub 20" S82°E, 38.2 feet.

1934 – H.C. Hall, Oneida County Surveyor: B.T.'s; W. Pine stp. 10" N24°W, 36 feet; W. Pine stub 20" N38 1/2°W, 110.3 feet; W. Pine stub 16" S66 1/4°E, 102.4 feet.

December 12th, 1997 – James D. Rein, R.L.S.: Recovered 1 1/4" dia. iron pipe in centerline of Spring Drive. Monument position is harmonious with Hall's prior surveys. Made ties to existing bearing trees and placed new reference monuments as shown in plan below.

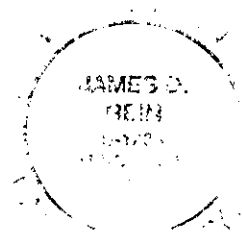
**(c)(d)(e)** Plan view of corner with ties to at least 4 witness monuments. If in disagreement with previously established corner, show the distance between the two corners and also indicate the ties to the disputed corner.



(i) I, James D. Rein, Registered Land Surveyor No. 1234, hereby certify that the corner location on this record was determined by me or under my direction and control and that this U.S. Public Land Survey Monument Record is correct and complete to the best of my knowledge and belief.

*James D. Rein*  
 Signature

January 20th, 1998  
 Date



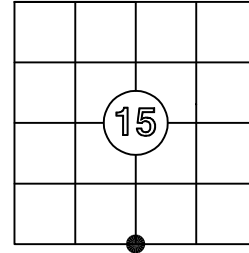
INDEX NO. N-15

# US PUBLIC LAND SURVEY MONUMENT RECORD

Per Wis. Admin. Code § A-E 7.08, a U.S. public land survey monument record shall be prepared and filed with the county survey records as part of any land survey within 60 days of setting or accepting the corner, which includes or requires the perpetuation, restoration, or use of a U.S. public land survey corner and when any of the situations in Wis. Admin. Code § A-E 7.08(1)(a), (b) or (c) arise.

**3(a) Corner Identification:**      Observed Coordinates:  
 Found PK Nail                      N: 181993.45  
 South 1/4 corner                    E: 309805.74  
 Section 15                              Datum: NAD83(2011)  
 Township 37 North                  GNSS Control: WISCRS  
 Range 10 East                        NETWORK  
 4th Principal Meridian            GNSS Method: RTK-Direct  
 Town of Stella                        Verification Method: 2  
 Oneida Co., WI

**CORNER ID:**  
**3710150020**



**Establishment of Original Corner**

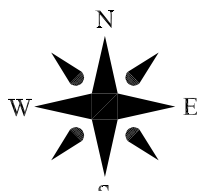
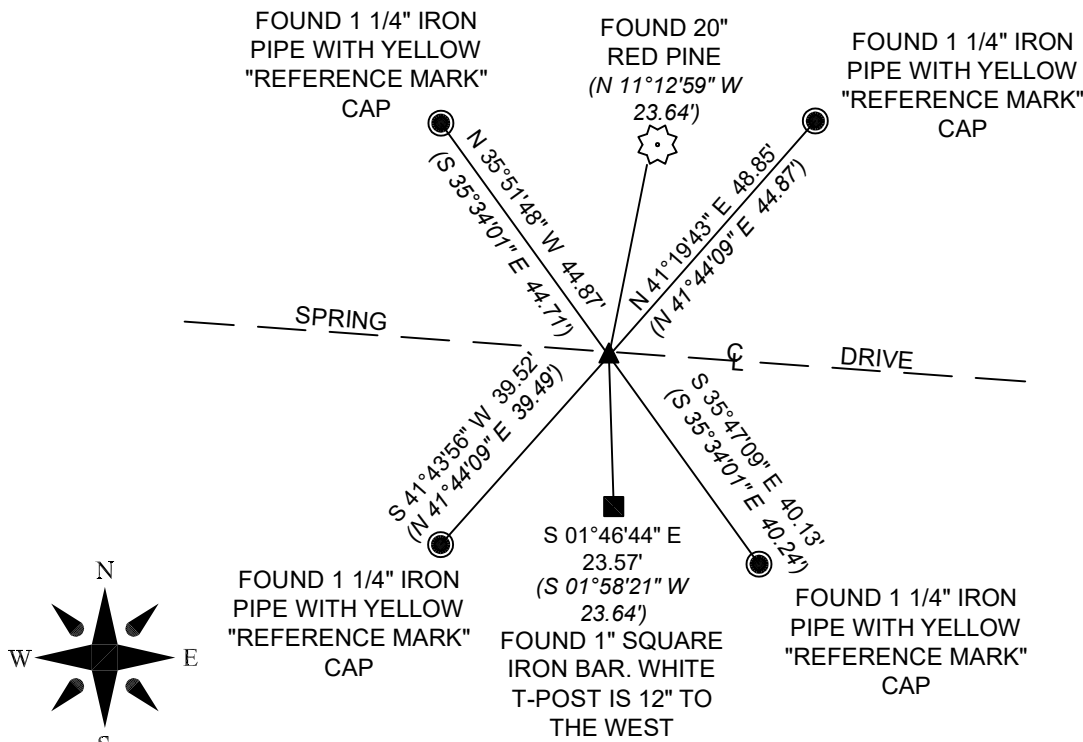
Corner Set: Wood Post  
 Original Surveyor: Wm. Daugherty  
 Date of Survey: August, 1863  
 White pine 12", N 37° E, 6 lks  
 Yellow pine 15", S 50° W, 11 lks

The coordinate value has been verified by at least one of the following methods:

1. Comparison to a previously determined GNSS determined published value;
2. The value is the average of two or more GNSS observations at markedly different times;
3. One or more distances were measured to the corner from offset GNSS observed locations, set and observed per No. 2 methods.

**3(b)(c)(d)(f)(g)(h)**

- This is a continuation of a previous USPLSS Monument Records by Surveyor James Rein, S-1234 (1998).
- 1/20/1998 - James Rein, S-1234, recovered a 1 1/4" iron pipe in the centerline of Spring Drive and tied to existing witnesses.
- 8/24/1999 - Devon Vanden Heuvel, S-1795 found a 1 1/4" iron pipe.
- 12/15/2008 - William Badow, S-1182, found a PK nail.
- 5/23/2011 - Todd Loftus, S-1523, found a PK nail.
- 4/27/2015 - Charles Oleinik, S-2439, found a survey nail fitting ties.
- 8/30/2025 - I, Anthony Jones, S-2508, found the PK nail. I did not dig out the blacktop to see if the iron pipe was still in place. I found no documentation showing how the PK nail was set, but I have accepted it as the correct location. The 10" scotch pine is now a rotten stump. All other witnesses were recovered and shown below. The corner was double occupied with a Carlson NR3 receiver and the witnesses were located with a Trimble robotic total station.



Scale: 1"=30'  
 Bearings: Oneida Co  
 Coordinate System

3(i) I, Anthony R. Jones, Wisconsin Professional Land Surveyor No S-2508, hereby certify that the corner location shown on this record was determined by me, and that this U.S. Public Land Survey Monument Record is correct and complete to the best of my knowledge and belief.

