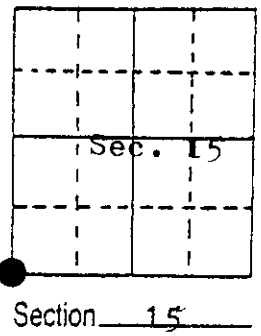
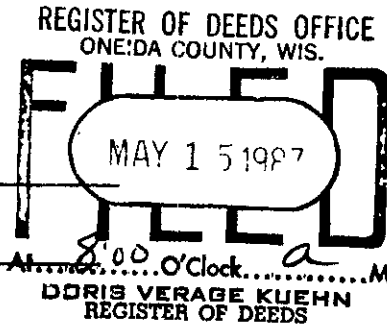


U.S. PUBLIC LAND SURVEY MONUMENT RECORD

Note: This form is intended and designed to fulfill all requirements of Wisconsin Administrative Code, Chapter A-E 5.02, U.S. Public Land Survey Monument Record (3) (a) (b) (c) (d) (e) (f) (g) (h) (i). An additional sheet may be added if necessary to conform with said requirements.

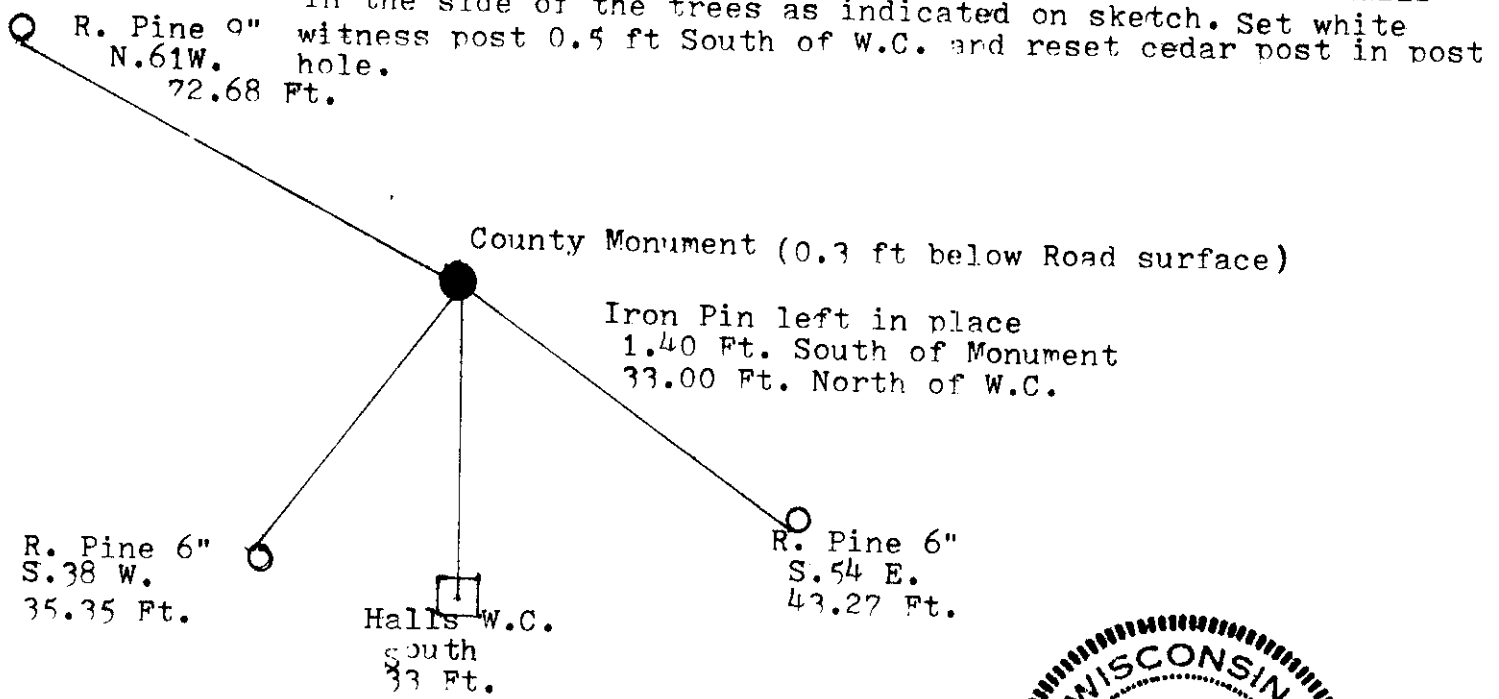
(a) Corner location: Township 37 North
 Range 10 East/West
 Town/City/Village Stella
 County Oneida



(b) (f) (g) (h) Description of monument found at this corner and if it was accepted, state all evidence (material, testimonial, occupational, plats, records, other monuments) used as a basis for accepting. If not accepted or if nothing was found, state evidence used as basis for establishing location. If reestablished through lost corner proportionate methods, indicate all monuments, distances and directions used to establish.

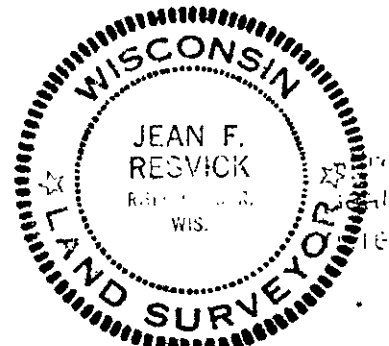
Surveyed in 1863 by William E. Daugherty. Set Post, Y. Pine 12, S41W, 11 Lks.
 Y. Pine 16, N88E, 54 Lks.
 Enter Swamp 2 ch. south. Enter Swamp 0.70 ch. North, Enter Swamp 1.54 ch. East.
 Halls notes of 1933. Town Road Cut E. & W., Y. Pine 12, N59W, 56.8 ft.
 Y. Pine 10, S32E, 27.7 ft. W.C. Monument South 33.0 Ft.
 F.R. Wincentzen in 1953 Iron Pin in Road, Witness corner (Conc. Mon.) 50 Lks.
 South. BT N. Pine (Stn) 12", N58w, 86 lks.
 Found; 6" Sq. conc. monument with brass cap set by Hall in 1933, Stamping
 Reads South to North. Iron Pin in road 32.61 ft. North of Monument.
 The W.C. as found was only 0.55 ft. long setting up right. Found
 bottom of W.C. in place north of the top. Found post point for
 scribed cedar post lying by top. Cedar post point is South of the base
 and North of the top. The top matches the base with the stamping
 reading North to South.
 I accepted the base of the W.C. to be the best evidence of Halls location
 and set the Corner Monument at 33 Ft. North from the base of the W.C.
 Leaving the Iron Pin in place 1.40 Ft. South of the Corner Monument.

(c) (d) (e) Plan view of corner with ties to at least 4 witness monuments. If in disagreement with previously established corner, show the distances between the two corners and also indicate the ties to the disputed corner.



(i) I, Jean F. Resvick
 (type or print name) certify that the corner location on this record was determined by me or under my direction and control and that this U.S. Public Land Survey Monument Record is correct and complete to the best of my knowledge and belief.

Jean F. Resvick Signature 5-13-87 Date



3710160000

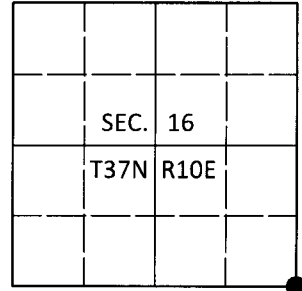
Index No. 7-13

U.S. PUBLIC LAND SURVEY MONUMENT RECORD

Note: This form is intended and designed to fulfill all requirements of Wisconsin Administrative Code, Chapter A-E 7.08 U.S. Public Land Survey Monument Record (3)(a-i).

(a) CORNER LOCATION
 Cor. of Secs. 15, 16, 21 & 22
 Township 37 North
 Range 10 East of the 4th P.M.
 Town of Stella
 County of Oneida

WISCRS - Oneida County
 N: 182,174.37 USft
 E: 307,130.60 USft
 Datum: NAD 83(2011)
 GNSS Method: RTN - Direct
 GNSS Control: WISCORS VRS



(b) HISTORY OF ORIGINAL CORNER ESTABLISHMENT

Original Surveyor:

Original Accessories:

Date of Survey Commenced:
 Completed:

See previous USPLS Monument Record

(b)(f)(g)(h) Description of monument found at this corner and if it was accepted, state all evidence (material, testimonial, occupational, plats, records, other monuments) used as a basis for accepting. If not accepted or if nothing was found, state evidence used as basis for establishing location. If re-established through lost corner proportionate methods, indicate all monuments, distances and directions used to establish. Indicate type of monument and sign post found or set.

This is a perpetuation of a previous USPLS Monument Record by Jean F. Resvick, RLS dated May 13, 1987 and filed in the office of the Oneida County Register of Deeds. A complete history of the corner can be found on the previous monument record. I accept the previous location as a true and faithful perpetuation or reestablishment of the original corner location and further perpetuate it as follows.

October 14, 2018: I found and accepted a Mag-Nail referenced by Hoglund (see 3710160020) in the centerline of the pavement. I found or established accessories as shown below. I set a white vinyl sign post adjacent to Hall's reference monument.

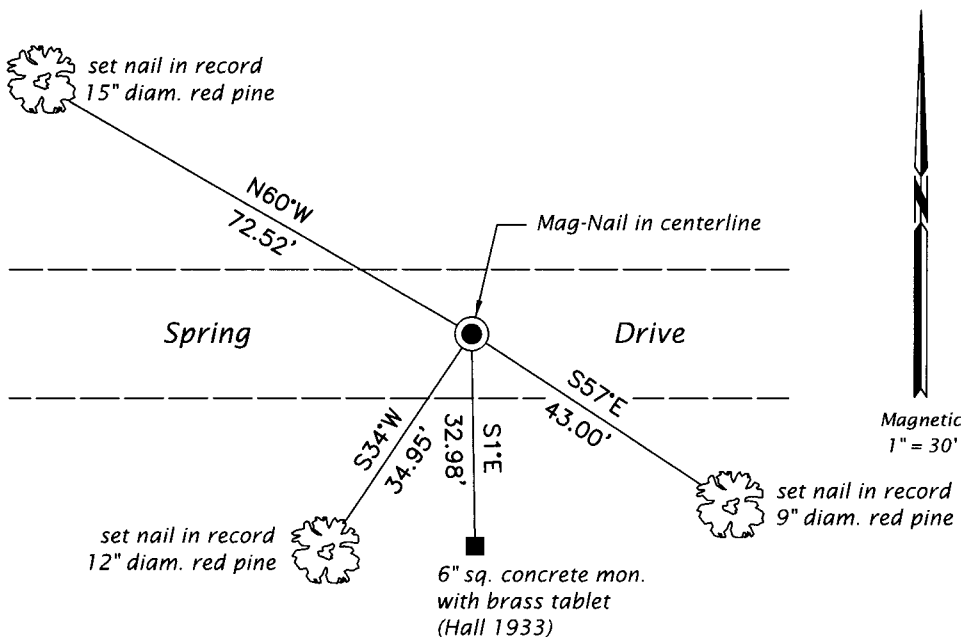
The coordinate value shown has been verified by at least one of the following methods: 1) comparison to a previously GPS determined published value; 2) the value is the average of two or more GPS observations at a markedly different time; 3) one or more distances were measured back to the GPS observed corner from temporary GPS observed offset locations.

REGISTER OF DEEDS OFFICE
 ONEIDA COUNTY
 FILED

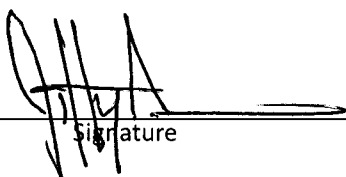
DEC 17 2018

KYLE J. FRANSON
 REGISTER OF DEEDS

(c)(d)(e) Plan view of corner with ties to at least 4 witness monuments. If in disagreement with previously established corner, show the distances between the two corners and also indicate the ties to the disputed.



(i) I, Jeffrey W. Austin, Professional Land Surveyor No. S-1885, hereby certify that the corner location on this record was determined by me or under my direction and control and that this U.S. Public Land Survey Monument Record is correct and complete to the best of my knowledge and belief.


 Signature

3 DEC 2018
 Date