

U.S. PUBLIC LAND SURVEY MONUMENT RECORD

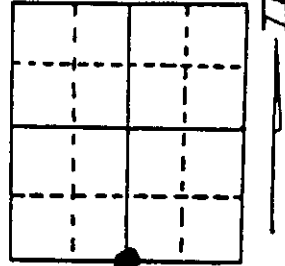
Note: This form is intended and designed to fulfill all requirements of Wisconsin Administrative Code, Chapter A-E 7.08 U.S. Public Land Survey Monument Record (3) (a) (b) (c) (d) (e) (f) (g) (h) (i). An additional sheet may be added if necessary to conform with said requirements.

(a) Corner location: Township 37 North

Range 10 East/West

Town/City/Village Stella

County Oneida

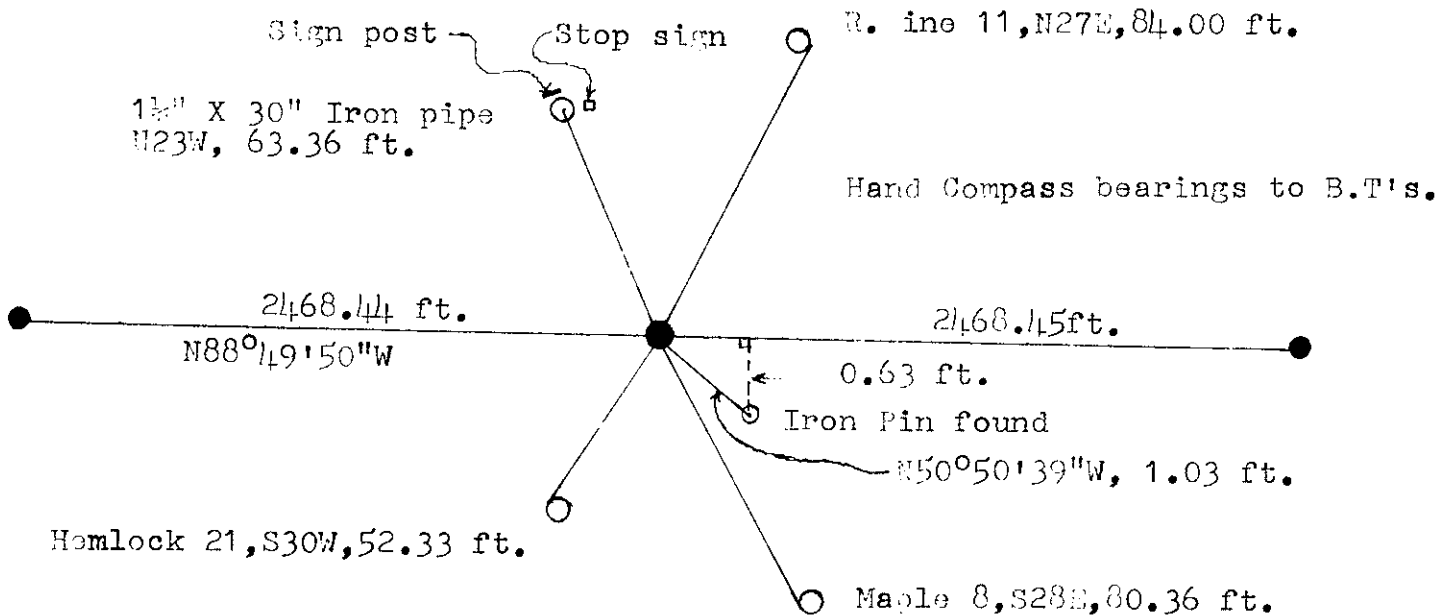


Section 16

(b) (f) (g) (h) Description of monument found at this corner and if it was accepted, state all evidence (material, testimonial, occupational, plats, records, other monuments) used as a basis for accepting. If not accepted or if nothing was found, state evidence used as basis for establishing location. If reestablished through lost corner proportionate methods, indicate all monuments, distances and directions used to establish. Indicate type of monument found or set and sign post.

Surveyed in 1863 by W.E. Daugherty. 40.05 chs. Set post, W. Pine 12", S73W, 14 lks W. Pine 10, N23E, 11 lks. B.F. Dorr in 1890 measured north line of section 21 to be 74.45 chs. F.R. Vincentson in 1953 found Iron Pin, at mid point, 37.00 chs. from section corners. I found Iron Pin, lying horizontal, under black top. I set pin up and tied it to traverse. This location was found to be 1.03 ft. from mid point between section corners. The true location of the pin being questionable I set the Quarter Corner at mid point between section corners. I set an Oneida County Survey Monument at mid point between section corners, and a White sign post by the 1 1/4" iron pipe witness, which is 1 foot West of stop sign.

(c) (d) (e) Plan view of corner with ties to at least 4 witness monuments. If in disagreement with previously established corner, show the distances between the two corners and also indicate the ties to the disputed corner. Blazed and scribed 3 bearing trees and drove 8 penny galvanized nails in side of each tree as indicated on sketch. Set 1 1/4" X 30 inch iron pipe 1 foot West of Stop Sign.



(i) I, Jean F. Resvick
 (type or print name) certify that the corner location on this record was determined by me or under my direction and control and that this U.S. Public Land Survey Monument Record is correct and complete to the best of my knowledge and belief.

Jean F. Resvick Signature 8/28/90 Date

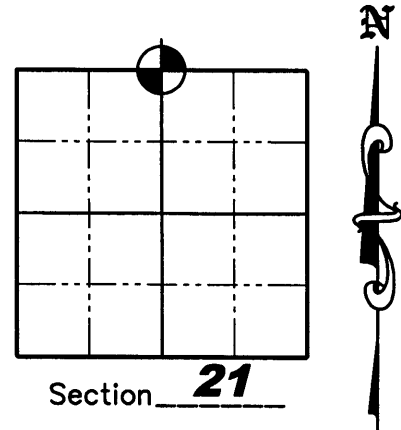


Index No. N-11

U.S. PUBLIC LAND SURVEY MONUMENT RECORD

NOTE: This form is intended and designed to fulfill all requirements of Wisconsin Administrative Code, Chapter A-E 7 .08 U.S. Public Land Survey Monument Record (3)(a)(b)(c)(d)(e)(f)(g)(h)(i). An additional sheet may be added if necessary to conform with said requirements.

(a) Corner location: Township 37 North
 Range 10 East/West
 Town STELLA
 County ONEIDA



(b)(f)(g)(h) Description of monument found at this corner and if it was accepted, state all evidence (material, testimonial, occupation, plats, records, other monuments) used as a basis for accepting. If not accepted or if nothing was found, state evidence used as a basis for establishing location. If reestablished through lost corner proportionate methods, indicate all monuments, distances and directions used to establish. Indicate type of monument found or set and sign post.

~~1863~~ Corner established by W. E. Daugherty. 39.70 chs. Set post, Aspen 12", N13W, 13 lks. Aspen 12", S17W, 41lks.

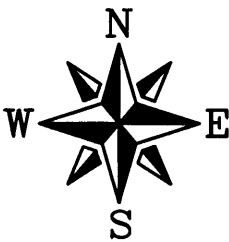
~~1899~~ B.F. Dorr measured North line of Sec. 21 to be 74.45 chs.

~~1953~~ F.R. Wincenson found iron pin, at mid point, 37.40 chs. from Section Corners.

~~8-28-1990~~ Jean F. Resvick, RLS 802, found iron pin lying horizontal under blacktop. Set Oneida County Monument at midpoint between section corners. Reference Monuments: 1-1/4" iron pipe, N23°W, 63.36'; 11" Red Pine, N27°E, 84.00'; 8" Maple, S28°E, 80.36'; 21" Hemlock, S30°W, 52.33'; 8D galvanized nails were set in the sides of BTs. Measurement between corners was 4936.89'.

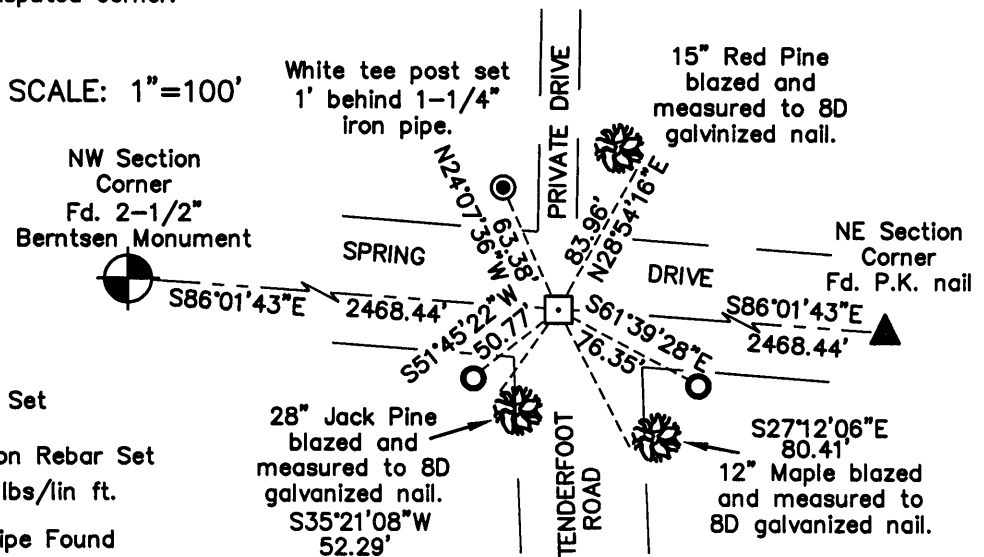
JUNE 2006 Matthew E. Hogleund S-1910. Found reference monuments, no County Monument found. Set rail road spike in pavement from existing ties and at midpoint between the Northeast and the Northwest Section corners. reference ties were set as shown below.

(c)(d)(e) Plan view of corner with ties to at least 4 witness monuments. If in disagreement with previously established corner, show the distances between the two corners and also indicate the ties to the disputed corner.



LEGEND

- ◻ Railroad Spike Set
- 3/4" x 24" Iron Rebar Set Weighing 1.50 lbs/lin ft.
- ⊙ 1-1/4" Iron Pipe Found



(i) I, Matthew E. Hogleund, certify that the corner location on this record was determined by me under my direction and control and that this U.S. Public Land Survey Monument is correct and complete to the best of my knowledge and belief.

Signature _____ Date 7/16/06

REGISTER OF DEEDS OFFICE
ONEIDA COUNTY, WIS.

FILED
APR 12 2007

At _____ O'Clock _____ M
THOMAS H. LEIGHTON
REGISTER OF DEEDS
371016 0020

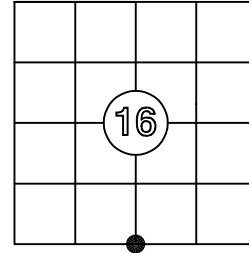
Proj. # 722

US PUBLIC LAND SURVEY MONUMENT RECORD

Per Wis. Admin. Code § A-E 7.08, a U.S. public land survey monument record shall be prepared and filed with the county survey records as part of any land survey within 60 days of setting or accepting the corner, which includes or requires the perpetuation, restoration, or use of a U.S. public land survey corner and when any of the situations in Wis. Admin. Code § A-E 7.08(1)(a), (b) or (c) arise.

3(a) Corner Identification: Observed Coordinates:
 Found railroad spike N: 182345.34
 South 1/4 corner E: 304668.05
 Section 16 Datum: NAD83(2011)
 Township 37 North GNSS Control: WISCRS
 Range 10 East NETWORK
 4th Principal Meridian GNSS Method: RTK-Direct
 Town of Stella Verification Method: 2
 Oneida Co., WI

CORNER ID:
3710160020



Establishment of Original Corner

Corner Set: Wood Post
 Original Surveyor: Wm. Daugherty
 Date of Survey: June, 1863
 Aspen 12", N 13° W, 13 lks
 Aspen 12", S 77° W, 41 lks

The coordinate value has been verified by at least one of the following methods:

1. Comparison to a previously determined GNSS determined published value;
2. The value is the average of two or more GNSS observations at markedly different times;
3. One or more distances were measured to the corner from offset GNSS observed locations, set and observed per No. 2 methods.

3(b)(c)(d)(f)(g)(h)

- This is a continuation of a previous USPLSS Monument Records by Surveyor Jean Resvick, S-802 (1990) and Surveyor Matt Hoglund, S-1910 (2006).
- 7/16/2006 - Matt Hoglund, S-1910, sets a railroad spike at the intersection of Spring Drive and Tenderfoot Road using existing witnesses.
- 8/30/2025 - I, Anthony Jones, S-2508, found the railroad spike set by Hoglund in 2006. The 28" jack pine to the southwest is gone. All other witnesses were recovered and shown below. I did not find the galvanized nails in the 12" maple or the 15" red pine, so I set new nails. The corner was double occupied with a Carlson NR3 receiver and the witnesses were located with a Trimble robotic total station.

