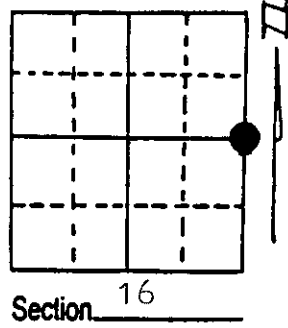


# U.S. PUBLIC LAND SURVEY MONUMENT RECORD

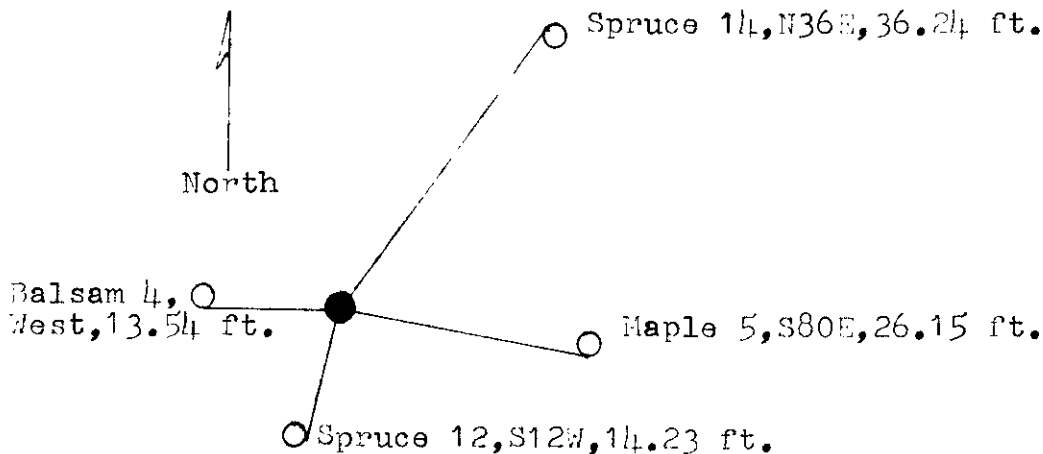
Note: This form is intended and designed to fulfill all requirements of Wisconsin Administrative Code, Chapter A-E 7.08 U.S. Public Land Survey Monument Record (3) (a) (b) (c) (d) (e) (f) (g) (h) (i). An additional sheet may be added if necessary to conform with said requirements.

(a) Corner location: Township 37 North  
 Range 10 East <sup>XXXXX</sup> West  
 Town/City/Village Stella  
 County Oneida



(b) (f) (g) (h) Description of monument found at this corner and if it was accepted, state all evidence (material, testimonial, occupational, plats, records, other monuments) used as a basis for accepting. If not accepted or if nothing was found, state evidence used as basis for establishing location. If reestablished through lost corner proportionate methods, indicate all monuments, distances and directions used to establish. Indicate type of monument found or set and sign post.  
 Surveyed in 1863 by W. I. Daugherty. Set post, Y. Pine 14, S78E, 6 Lks. Aspen 12, N63W, 3 lks. F.R. Vincentsen located iron pipe and these B.T's. in 1953. Spruce 8, N26E, 55 lks., Tam 6, N29W, 74.3 lks. I found 1" diam. iron pipe, 18" long, Spruce 14, N36E, 36.24 ft., Tam. dead, N29W, 49.0 ft. I replaced iron pipe with a Oneida County Monument and placed iron pipe along side of. I set White Sign post on SE side of monument and blazed and scribed 3 new bearing trees as shown on sketch. I set 8 penny galvanized nails on the side of the B.T's.

(c) (d) (e) Plan view of corner with ties to at least 4 witness monuments. If in disagreement with previously established corner, show the distances between the two corners and also indicate the ties to the disputed corner.



Hand Compass bearings to B.T's.

(i) I, Jean F. Resvick  
 (type or print name) certify that the corner location on this record was determined by me or under my direction and control and that this U.S. Public Land Survey Monument Record is correct and complete to the best of my knowledge and belief.

Jean F. Resvick Signature 8/28/90 Date



Stamp

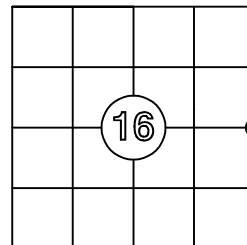
371016 2000

Index No. L-13

## US PUBLIC LAND SURVEY MONUMENT RECORD

Per Wis. Admin. Code § A-E 7.08, a U.S. public land survey monument record shall be prepared and filed with the county survey records as part of any land survey within 60 days of setting or accepting the corner, which includes or requires the perpetuation, restoration, or use of a U.S. public land survey corner and when any of the situations in Wis. Admin. Code § A-E 7.08(1)(a), (b) or (c) arise.

**CORNER ID:**  
**3710162000**



**3(a) Corner Identification:**

Found Oneida County aluminum monument  
East 1/4 corner  
Section 16  
Township 37 North  
Range 10 East  
4th Principal Meridian  
Town of Stella  
Oneida Co., WI

Observed Coordinates:

N: 184799.63  
E: 307272.26  
Datum: NAD83 (2011)  
GNSS Control: WISCRS Network  
GNSS Method: RTK-Direct  
Verification Method: 2

The coordinate value has been verified by at least one of the following methods: 1) comparison to a previously GNSS determined published value; 2) The value is the average of two or more GNSS observations at markedly different times; 3) one or more distances were measured to the corner from temporary GNSS observed offset locations.

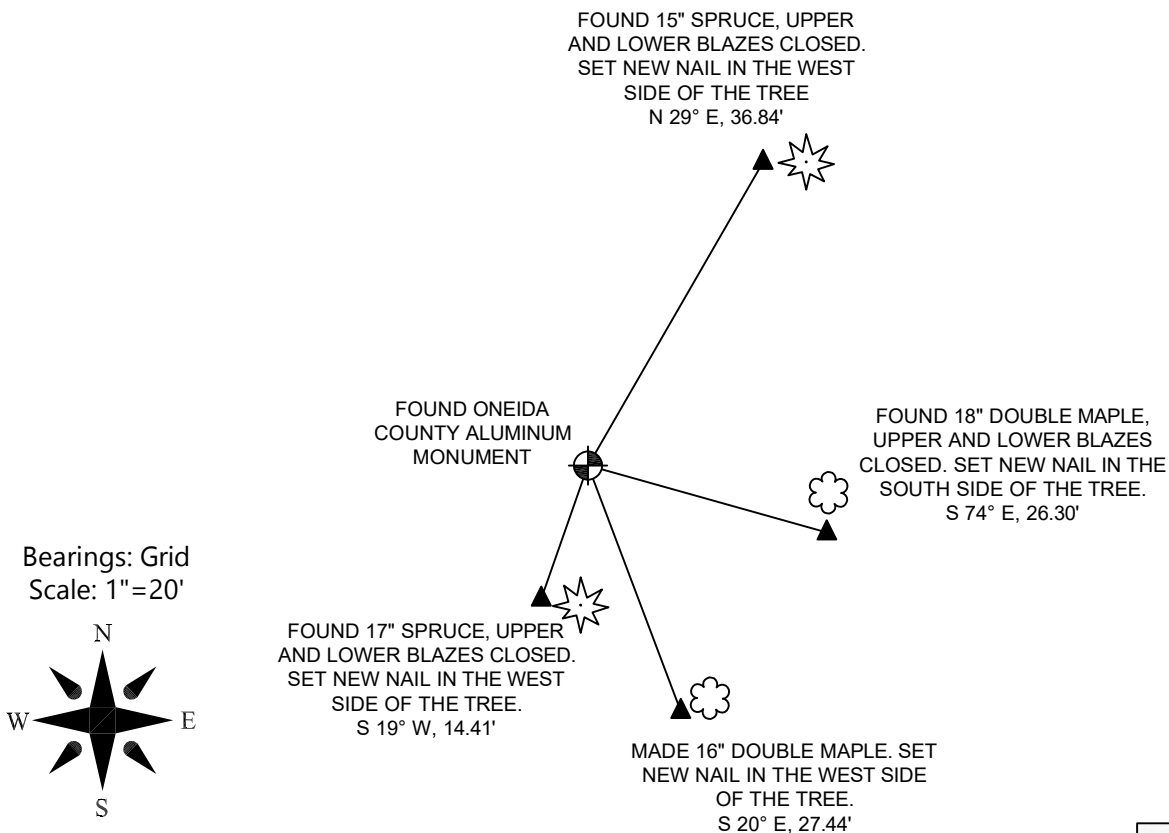
**History of Original Corner Establishment**

Corner Set: Wood Post  
Original Surveyor: Wm. Daugherty  
Date of Survey: August, 1863  
Yellow pine, 14" S 78° E, 6 links  
Aspen, 12" N 63° W, 3 links

**3(b)((c)(d)(f)(g)(h)**

This is a continuation of a previous USPLSS Monument Record by Surveyor Jean Resvick (1990). See previous record for additional history on this corner.

- 8/28/1990 - Jean Resvick, S-802, finds a 1" iron pipe and replaced it with an Oneida County aluminum monument.
- 6/7/1995 - Todd Loftus, S-1523, finds a subdivisional monument of record.
- 12/15/2008 - Bill Bandow, S-1182, finds an Oneida County aluminum monument
- 12/20/2025 - I, Anthony Jones, S-2508, found an Oneida County aluminum monument as set and described by Jean Resvick, in good condition. I found three of the four witness trees in good condition. I did not find any of the nails described by Resvick, so I added a new nail to each tree. The balsam at 13.54', West is gone, so I made a new witness, all as shown below. I also found the 1" iron pipe adjacent to the monument, as described by Resvick. There is a 20" white birch, N 54° E (3.5'±) with an upper blaze that is closed. A white guard post is 0.5' southeast.



**3(i)**  
I, Anthony R. Jones, Wisconsin Professional Land Surveyor No S-2508, hereby certify that the corner location shown on this record was determined by me, or under my direction or control, and that this U.S. Public Land Survey Monument Record is correct and complete to the best of my knowledge and belief.

