

REGISTER OF DEEDS OFFICE
 ONEIDA COUNTY, WIS.
FILED
 SEP 6 1990
 At _____ O'Clock _____ M
THOMAS H. LEIGHTON
 REGISTER OF DEEDS

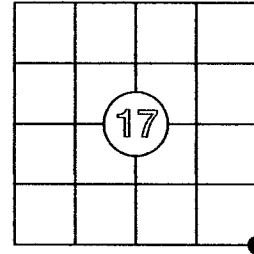
US PUBLIC LAND SURVEY MONUMENT RECORD

Per Wis. Admin. Code § A-E 7.08, a U.S. public land survey monument record shall be prepared and filed with the county survey records as part of any land survey within 60 days of setting or accepting the corner, which includes or requires the perpetuation, restoration, or use of a U.S. public land survey corner and when any of the situations in Wis. Admin. Code § A-E 7.08(1)(a), 7.08(1)(b) or 7.08(1)(c) arise.

3(a) Corner location:
 Found Aluminum Monument
 Southeast Corner Section 17
 Township 37 North Range 10 East
 4th Principal Meridian
 Town of Stella
 Oneida Co., WI

WISCRS: Oneida County
 N: 182,516.32 (*measured*) 182,516.232 (*record*)
 E: 302,205.56 (*measured*) 302,205.516 (*record*)
 Datum: NAD 83 (2011)
 GNSS Control: WISCORS VRS Network
 GNSS Method: RTK - Direct
 Verification Method: 1, 2

The coordinate value, if shown, has been verified by at least one of the following methods: 1) comparison to a previously GNSS determined published value; 2) The value is the average of two or more GNSS observations at markedly different times; 3) one or more distances were measured to the corner from temporary GNSS observed offset locations.



CORNER ID:
3710170000

(b) History of Original Corner Establishment
 Corner Set: Wood Post
 Original Surveyor: W.M. Daugherty
 Date of Survey: 1863

Original Bearing Trees:
 10" White Pine- N 25° W, 31 links
 8" Yellow Pine - S 83° W, 75 links

(b)(f)(g)(h) Description of monument found at this corner and, if it was accepted, state all evidence (material, testimonial, occupational, plats, record, other monuments) used as a basis for establishing location. If re-establishing through lost corner proportionate methods, indicate all monuments, distances and directions used to establish this location. Indicate type of monument and sign post found or set.

This is a perpetuation of a previous USPLSS Monument Record by Surveyor Jean F Resvick, S-802, dated August 27th, 1990. See previous record for additional history on this corner.

- 1990: Jean Resvick found an iron pipe in the road and replaced it with an Oneida County capped monument at the intersection of Spring Drive and Spafford Road
- 1991-2007: Multiple surveyors accept and use the Oneida County monument as the corner location
- 7/27/2020 - I found and accepted the Oneida County monument as the corner location. The 9" Scotch pine (NW) has been cut down and the stump has rotted. The 12" hemlock (NE), has been removed. Both power poles are in place. The dimension to the SE pole is to a nail in the side and the dimension to the NE pole appears to be to the face. I set 4 new reference monuments, shown below.

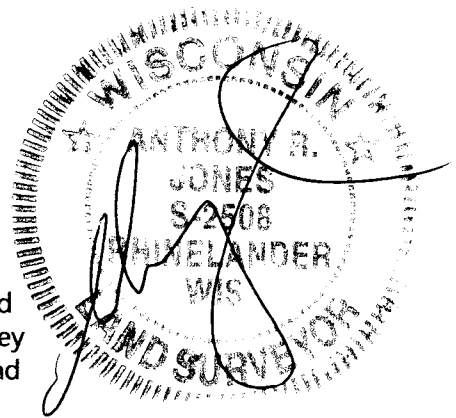
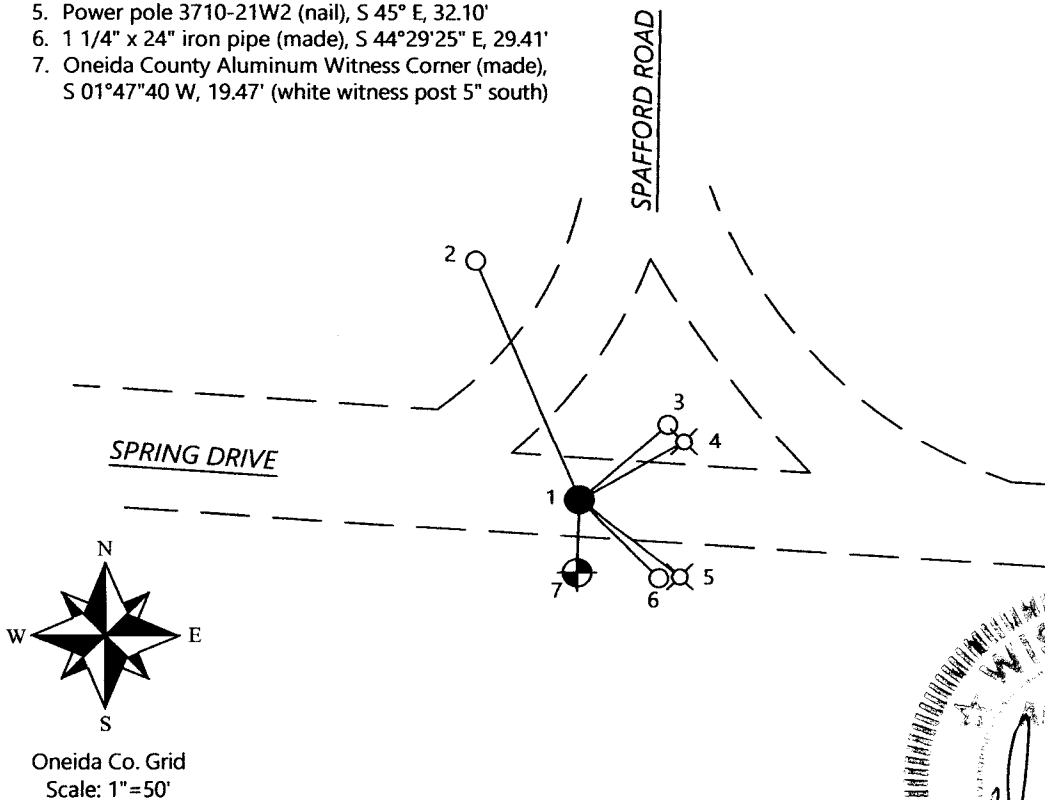
(c)(d)(e) Plan view of corner with ties to at least 4 witness monuments. If in disagreement with previously established corner, show the distances between the two corners and also indicate the ties to the disputed.

1. Oneida Co Aluminum Monument
2. 1 1/4" x 24" iron pipe (made), N 23°14'19" W, 68.26'
3. 1 1/4" x 24" iron pipe (made), N 49°10'59" E, 30.54'
4. Power pole 3710-16L7 (face), N 58°E, 32.61'
5. Power pole 3710-21W2 (nail), S 45° E, 32.10'
6. 1 1/4" x 24" iron pipe (made), S 44°29'25" E, 29.41'
7. Oneida County Aluminum Witness Corner (made), S 01°47'40 W, 19.47' (white witness post 5" south)

REGISTER OF DEEDS OFFICE
ONEIDA COUNTY
FILED

SEP 04 2020

KYLE J. FRANSON
REGISTER OF DEEDS



(i) I, Anthony R. Jones, Wisconsin Professional Land Surveyor No S-2508, hereby certify that the corner location shown on this record was determined by me, or under my direction or control, and that this U.S. Public Land Survey Monument Record is correct and complete to the best of my knowledge and belief.

Anthony R. Jones 9/21/2020
 Anthony R. Jones, PLS No. S-2508 Date

Index No. N-9

US PUBLIC LAND SURVEY MONUMENT RECORD

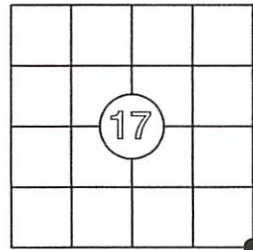
Per Wis. Admin. Code § A-E 7.08, a U.S. public land survey monument record shall be prepared and filed with the county survey records as part of any land survey within 60 days of setting or accepting the corner, which includes or requires the perpetuation, restoration, or use of a U.S. public land survey corner and when any of the situations in Wis. Admin. Code § A-E 7.08(1)(a), 7.08(1)(b) or 7.08(1)(c) arise.

3(a) Corner location:

Found aluminum monument
Southeast Corner
Section 17
Township 37 North
Range 10 East
4th Principal Meridian
Town of Stella
Oneida Co., WI

WISCRS:
N:
E:
Datum:
GNSS Control:
GNSS Method:
Verification Method:

The coordinate value, if shown, has been verified by at least one of the following methods: 1) comparison to a previously GNSS determined published value; 2) The value is the average of two or more GNSS observations at markedly different times; 3) one or more distances were measured to the corner from temporary GNSS observed offset locations.



CORNER ID:
3710170000

(b) History of Original Corner Establishment

Corner Set: Wood Post
Original Surveyor: Wm. Dougherty
Date of Survey: 1863

Original Bearing Trees:
10" White Pine - N 25° W, 31 links
8" Yellow Pine - S 83° W, 75 links

(b)(f)(g)(h) Description of monument found at this corner and, if it was accepted, state all evidence (material, testimonial, occupational, plats, record, other monuments) used as a basis for establishing location. If re-establishing through lost corner proportionate methods, indicate all monuments, distances and directions used to establish this location. Indicate type of monument and sign post found or set.

This is a perpetuation and post-construction record of a previous USPLSS Monument Record by Surveyor Anthony R. Jones, Wisconsin Land Surveyor No. S-2508 . See previous record for additional history on this corner.

7/21/2001: I revisited this corner at the request of Mike Romportl, Oneida County Land Information Officer. This intersection was reconstructed between this survey date and my previous tie sheet. I found that the iron pipe I set and the power pole I found in the center of the old intersection have been removed. The power pole to the southeast has also been removed I set two new 1 1/4 in by 18 inch iron pipes as shown below. The aluminum monument marking the corner was not disturbed during the re-construction process.

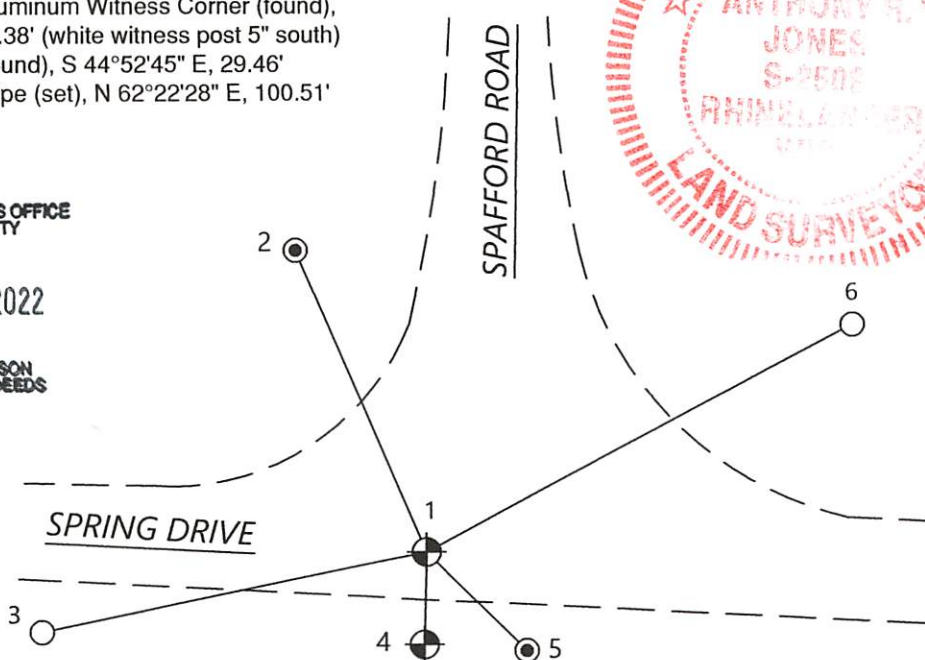
(c)(d)(e) Plan view of corner with ties to at least 4 witness monuments. If in disagreement with previously established corner, show the distances between the two corners and also indicate the ties to the disputed.

1. Oneida Co Aluminum Monument-not disturbed during intersection re-construction
2. 1 1/4" iron pipe (found), N 23°14'19" E, 68.30'
3. 1 1/4" x 18" iron pipe (set), S 78°25'50" W, 81.86'
4. Oneida County Aluminum Witness Corner (found), S 01°33'05" W, 19.38' (white witness post 5" south)
5. 1 1/4" iron pipe (found), S 44°52'45" E, 29.46'
6. 1 1/4" x 18" iron pipe (set), N 62°22'28" E, 100.51'

REGISTER OF DEEDS OFFICE
ONEIDA COUNTY
FILED

APR 05 2022

KYLE J. FRANSON
REGISTER OF DEEDS



Oneida Co. Grid
Scale: 1"=40'



(i) I, Anthony R. Jones, Wisconsin Professional Land Surveyor No S-2508, hereby certify that the corner location shown on this record was determined by me, or under my direction or control, and that this U.S. Public Land Survey Monument Record is correct and complete to the best of my knowledge and belief.

Anthony R. Jones, PLS No. S-2508

Date

4/2/22

Index No.

N-9