

CERTIFIED LAND CORNER RESTORATION

Index No. L-9

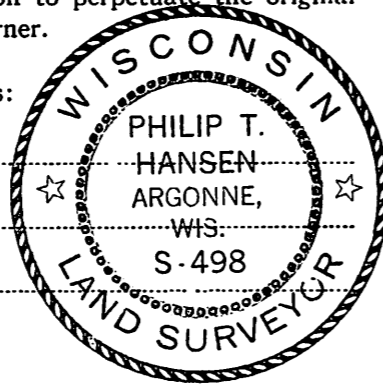
State of Wisconsin }
County of Oneida } ss.

I Philip T. Hansen, do hereby certify that on the 2nd day of October, 1979, I found evidence of the Quarter corner of Section 16 and 17 Township 37, North, Range 10 East, Fourth Principal Meridian, as described hereon; and that from this evidence I established a new monument and accessories as described hereon to perpetuate the original location of this corner.

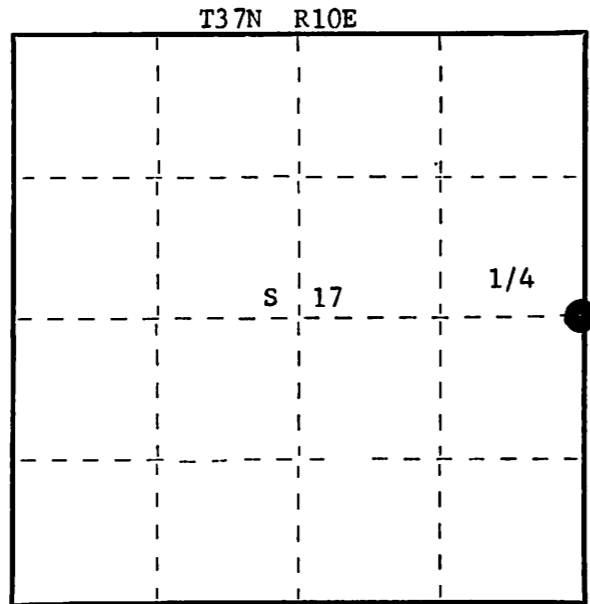
Resident witnesses:

Jim Claflin

Herb Wagoner



FORM 985 H. C. MILLER CO., MILWAUKEE



○ = Corner monument restored.

History of original corner establishment:

Original corner established by Wm. E. Dougherty, Deputy Surveyor, in 1863, from which W.Pine 8" bears N30°W 20 links and W.Pine 12" bears S40°E 20 links.

Corner recovered by Abernathy.

Recovered by N. Loftus, Ripco surveyor. Recovered iron pin in road and BT's established by Abernathy. They used his corner for subdividing the section 17.

Description of corner evidence found:

Recovered 1/2" iron pipe with screw in nipple in top. This sets on the edge of the west side of blacktop.

Recovered OBT's -

Tamarack 12" N35°E 119.5 links, scribed 1/4 - 1/4 S BT.

Recovered Ripco's 2-1/2" iron pipe with brass cap, witness corner for above, 24.25 links west of true corner. Cap stamped:

S17 1/4 S16

Monument projects 18".

T37N R10E
Cor. 24.25 lks E
RIPCO

Description of monument and accessories I established to perpetuate the original location of this corner.

Drove the iron pipe (true corner) 6" below surface.

Marked NBT - R.Pine 14" S52°W 75.1 links to true corner, scribed 1/4 BT.

Power Pole 3710-16US S29°E 102.3 links (nail in side of pole).

Dated at Rhineland, Wis., this 9th day of October, 1979

Signature Philip T. Hansen Title Registered Land Surveyor Registration No. S-498
(County Surveyor, Registered Land Surveyor, or other duly authorized official)

Office of Register of Deeds, County of Oneida I hereby certify that the within instrument was filed in this office for record on the 3rd day of December, 1979 at 1:15 o'clock P. M.

Doris Verage Kuehn
(Register of Deeds)

By..... Deputy

3710172000

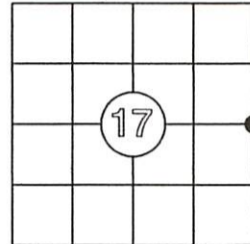
US PUBLIC LAND SURVEY MONUMENT RECORD

Per Wis. Admin. Code § A-E 7.08, a U.S. public land survey monument record shall be prepared and filed with the county survey records as part of any land survey within 60 days of setting or accepting the corner, which includes or requires the perpetuation, restoration, or use of a U.S. public land survey corner and when any of the situations in Wis. Admin. Code § A-E 7.08(1)(a), 7.08(1)(b) or 7.08(1)(c) arise.

3(a) Corner location:
 Set 3/4" x 24" Iron Rod
 East 1/4 Corner
 Section 17
 Township 37 North
 Range 10 East
 4th Principal Meridian
 Town of Stella
 Oneida Co., WI

WISCORS: Oneida County
 N: 185223.31 (*measured*)
 E: 302229.17 (*measured*)
 Datum: NAD 83 (2011)
 GNSS Control: WISCORS VRS Network
 GNSS Method: RTK - Direct
 Verification Method: 2

The coordinate value, if shown, has been verified by at least one of the following methods: 1) comparison to a previously GNSS determined published value; 2) The value is the average of two or more GNSS observations at markedly different times; 3) one or more distances were measured to the corner from temporary GNSS observed offset locations.



CORNER ID:
3710172000

(b) History of Original Corner Establishment
 Corner Set: Wood Post
 Original Surveyor: Wm. Dougherty
 Date of Survey: 1863

Original Bearing Trees:
 8" White Pine - N 30° W, 20 links
 12" White Pine - S 40° E, 20 links

(b)(f)(g)(h) Description of monument found at this corner and, if it was accepted, state all evidence (material, testimonial, occupational, plats, record, other monuments) used as a basis for establishing location. If re-establishing through lost corner proportionate methods, indicate all monuments, distances and directions used to establish this location. Indicate type of monument and sign post found or set.

This is a perpetuation of a previous USPLSS Monument Record by Surveyor Philip T Hansen, Wisconsin Land Surveyor No. S-498. See previous record for additional history on this corner.

- 10/18/1984: Todd Loftus found subdivisional monument (L350)
- 1/13/1990: Todd Loftus found a 1 in iron pipe (B2074).
- 5/20/1990: Jean Resvick found an iron pipe (B2147).
- 5/7/1991: Wm. Bandow found a 3/4" iron bar (B2287).
- 6/25/1991: Jean Resvick finds "monument of record" (B2305)
- 6/28/1995: Kip Sodor finds a 3/4" iron rod (B3268).
- 2/12/1997: Wm Bandow finds a 3/4" iron rod (B3619).
- 11/3/1997: Kip Sodor finds a 3/4" iron rod (B3789).
- 5/24/2000: Kevin Bixby finds an existing iron rod (C1696).
- 2/01/2001: Kevin Bixby finds an iron rod (C1765).
- 7/13/2020: Anthony R. Jones set a 3/4" by 24" iron rod. See page 2 of 2 for details.

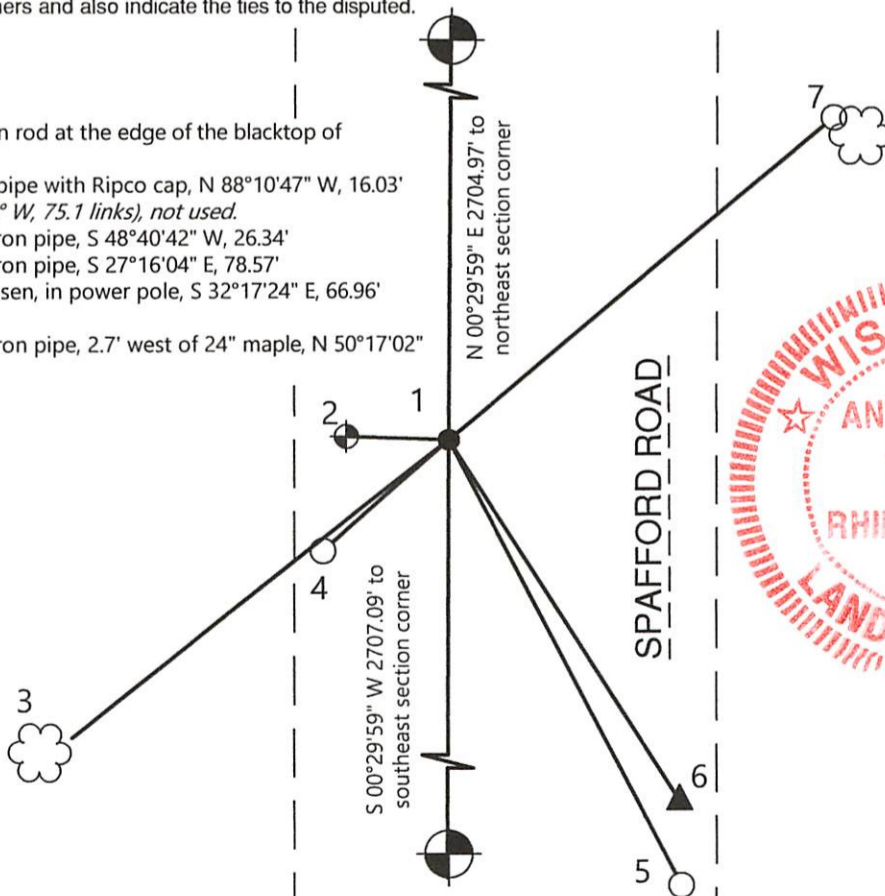
REGISTER OF DEEDS OFFICE
 ONEIDA COUNTY
 FILED

APR 05 2022

KYLE J. FRANSON
 REGISTER OF DEEDS

(c)(d)(e) Plan view of corner with ties to at least 4 witness monuments. If in disagreement with previously established corner, show the distances between the two corners and also indicate the ties to the disputed.

1. Set 3/4" by 24" iron rod at the edge of the blacktop of Spafford Rd.
2. Found 2 1/2" iron pipe with Ripco cap, N 88°10'47" W, 16.03'
3. 21" Red Pine (S 52° W, 75.1 links), *not used*.
4. Set 1 1/4" by 18" iron pipe, S 48°40'42" W, 26.34'
5. Set 1 1/4" by 18" iron pipe, S 27°16'04" E, 78.57'
6. Found nail, by Hansen, in power pole, S 32°17'24" E, 66.96' (67.52')
7. Set 1 1/4" by 18" iron pipe, 2.7' west of 24" maple, N 50°17'02" E, 78.51'



Oneida Co. Grid
 Scale: 1"=30'



(i) I, Anthony R. Jones, Wisconsin Professional Land Surveyor No S-2508, hereby certify that the corner location shown on this record was determined by me, or under my direction or control, and that this U.S. Public Land Survey Monument Record is correct and complete to the best of my knowledge and belief.

Anthony R. Jones, PLS No. S-2508

Date

4/2/22

Index No.

L-9

US PUBLIC LAND SURVEY MONUMENT RECORD

Per Wis. Admin. Code § A-E 7.08, a U.S. public land survey monument record shall be prepared and filed with the county survey records as part of any land survey within 60 days of setting or accepting the corner, which includes or requires the perpetuation, restoration, or use of a U.S. public land survey corner and when any of the situations in Wis. Admin. Code § A-E 7.08(1)(a), 7.08(1)(b) or 7.08(1)(c) arise.

(b)(f)(g)(h) Description of monument found at this corner and, if it was accepted, state all evidence (material, testimonial, occupational, plats, record, other monuments) used as a basis for establishing location. If re-establishing through lost corner proportionate methods, indicate all monuments, distances and directions used to establish this location. Indicate type of monument and sign post found or set.

Continued from Page 1 of 2.

This is a perpetuation of a previous USPLSS Monument Record by Surveyor Philip T Hansen, Wisconsin Land Surveyor No. S-498 . See previous record for additional history on this corner.

10/18/1984: Todd Loftus found subdivisional monument (L350)

1/13/1990: Todd Loftus found a 1 in iron pipe (B2074).

5/20/1990: Jean Resvick found an iron pipe (B2147).

5/7/1991: Wm. Bandow found a 3/4" iron bar (B2287).

6/25/1991: Jean Resvick finds "monument of record" (B2305)

6/28/1995: Kip Sodor finds a 3/4" iron rod (B3268).

2/12/1997: Wm Bandow finds a 3/4" iron rod (B3619).

11/3/1997: Kip Sodor finds a 3/4" iron rod (B3789).

5/24/2000: Kevin Bixby finds an existing iron rod (C1696).

2/01/2001: Kevin Bixby finds an iron rod (C1765).

7/13/2020: Anthony R. Jones set a 3/4" by 24" iron rod. I found that the roadbed around this corner had been excavated and re-paved. I could not find the iron rod/pipe described by others. I found the 14" R.Pine by Hansen (S 52°W, 75.1 lks) is unusable to reset this corner, due to condition, terrain and overgrown foliage. I found the nail in power pole, 3710-16US, by Hansen (S 29°E, 102.3 links) in good condition. I found the Ripco 2 1/2" iron pipe with brass cap (West, 24.35 links) in good condition. Using the ties, I set a temporary nail at the edge of the blacktop. I then observed this temporary nail with two distinct RTK observations. I plotted my observed location and found it to be out of place with regard to the Sodor and Bandow surveys and ties to the southeast section corner. I then re-surveyed the Loftus L350 map and also found that the temporary nail did not match here, either. The surveys done in this area all have similar ties to either the southeast or northeast section corners, but none tie directly to both and none of the distances are duplicated. I used the Sodor map (B3789) to create and approximate location for this corner. I then drew a straight line from the northeast section corner to the southeast section corner, and the calculated location fell on this straight line. I also found this location to be harmonious with the Loftus map, L350. I therefore held the Sodor distance from the south east corner to the east 1/4 corner as correct. I now accept and monument this new position using the best available evidence and referenced it to witness monuments as seen on Page 1 of 2. After setting the iron rod at the edge of the blacktop of Spafford Rd, I observed it with two distinct RTK observations and have shown the coordinates on Page 1 of 2.

REGISTER OF DEEDS OFFICE
ONEIDA COUNTY
FILED

APR 05 2022

KYLE J. FRANSON
REGISTER OF DEEDS

