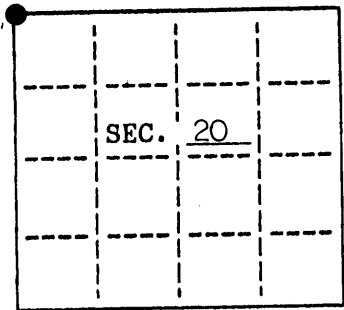


U.S. PUBLIC LAND SURVEY MONUMENT RECORD

Note: This form is intended and designed to fulfill all requirements of Wisconsin Administrative Code, Chapter X-8 Y.08 U.S. Public Land Survey Monument Record (3)(a)(b)(c)(d)(e)(f)(g)(h)(i). An additional sheet may be added if necessary to conform with said requirements.

(a) CORNER LOCATION: ~~State Plane~~ **Coordinates**
 ONEIDA COUNTY
 X 296781.285
 Township 37 North Y 182862.197
 Range 10 East Datum Base _____
 Town/City STELLA County of ONEIDA

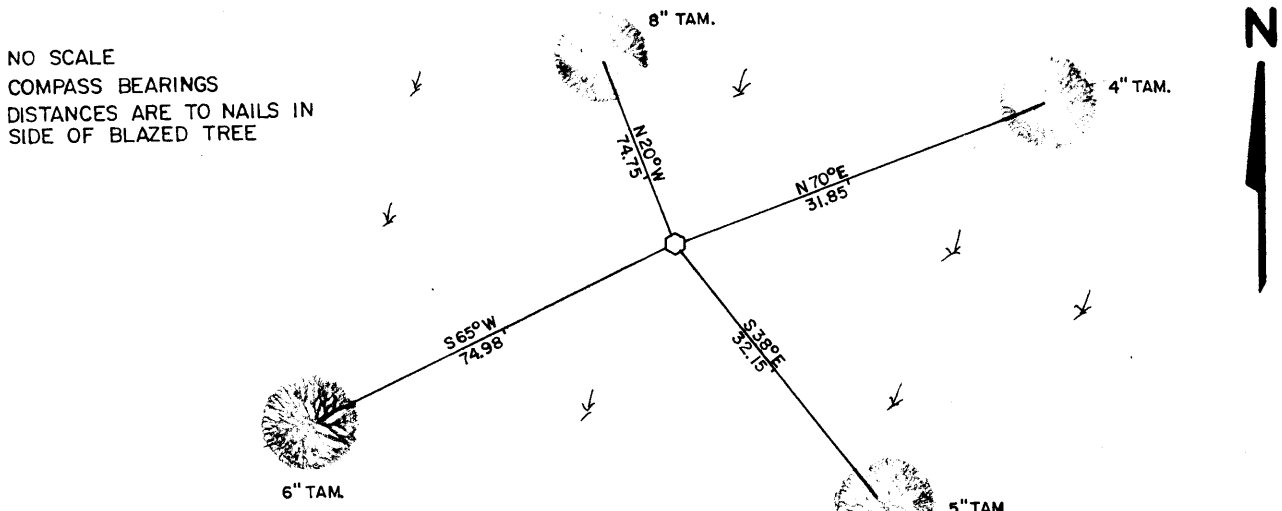


(b) HISTORY OF ORIGINAL CORNER ESTABLISHMENT
 Original Surveyor: WILLIAM DAUGHERTY Original B.T.'s
 Date of Survey: Commenced 1863 TAM. 8" N86°E 31 LKS.
 Completed 1863 TAM. 6" S50°W 35 LKS.

(b)(f)(g)(h) Description of monument found at this corner and if it was accepted, state all evidence (material, testimonial, occupational, plats, records, other monuments) used as a basis for accepting. If not accepted or if nothing was found, state evidence used as basis for establishing location. If reestablished through lost corner proportionate methods, indicate all monuments, distances and directions used to establish. Indicate type of monument and sign post found or set.

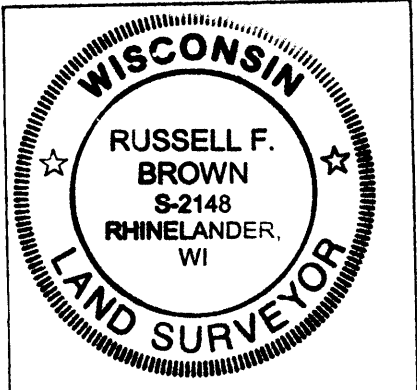
- 12-16-1960 NORMAN LOFTUS AT CORNER IN RESURVEY OF SECTION 18 NEW BT SB. 4" N22°E 1.10 CH. OLD STP. N88°E .315 CH.
- 1-3-2007 I FOUND A 1 1/2" IRON PIPE WITH RIPCO CAP AND ACCEPTED AS CORNER. CORNER IS IN LARGE OPEN MARSH WITH A FEW SPRUCE & TAM. NO EXISTING BT'S. VISABLE. MADE 4 NEW BT'S. GPS COORDINATES OBTAINED WITH TRIMBLE 5700-5800 R.T.K. MEASURED DIRECT ON TWO SEPARATE DAYS. I USED HARN 241S AND THE NE CORNER OF SECTION 20, (CALIBRATION POINTS) AND CHECKED INTO THE S 1/4 OF SECTION 20.

(c)(d)(e) Plan view of corner with ties to at least 4 witness monuments. If in disagreement with previously established corner, show the distances between the two corners and also indicate the ties to the disputed.



REGISTER OF DEEDS OFFICE
ONEIDA COUNTY, WIS.

FILED
APR 3 2007



INDEX NO. 25

(i) I, Russell F. Brown hereby certify that the corner location on this record was determined by me or under my direction and that this U.S. Public Land Survey Monument Record is correct and complete to the best of my knowledge and belief.

Russell F. Brown Date 2/6/07
Signature

3710180000