

# U.S. PUBLIC LAND SURVEY MONUMENT RECORD

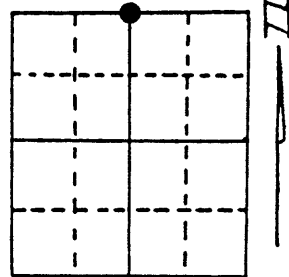
Note: This form is intended and designed to fulfill all requirements of Wisconsin Administrative Code, Chapter A-E 5.02, U.S. Public Land Survey Monument Record (3) (a) (b) (c) (d) (e) (f) (g) (h) (i). An additional sheet may be added if necessary to conform with said requirements.

(a) Corner location: Township 37 North

Range 10 East

Town/City/Village STELLA

County ONEIDA



Section 19

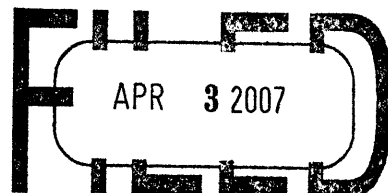
(b) (f) (g) (h) Description of monument found at this corner and if it was accepted, state all evidence (material, testimonial, occupational, plats, records, other monuments) used as a basis for accepting. If not accepted or if nothing was found, state evidence used as basis for establishing location. If reestablished through lost corner proportionate methods, indicate all monuments, distances and directions used to establish.

AUG. 1863 W. DAUGHERTY SET POST. Y. PINE 18" S46°W 35 LKS. - Y. PINE 20" N61°E 12 LKS.

12-16-1960 NORMAN LOFTUS AT CORNER IN RESURVEY OF SECTION 18. SET CORNER. PN 12" N68°E 41 1/2 LKS. PJ. 8" N86°W 47 LKS.

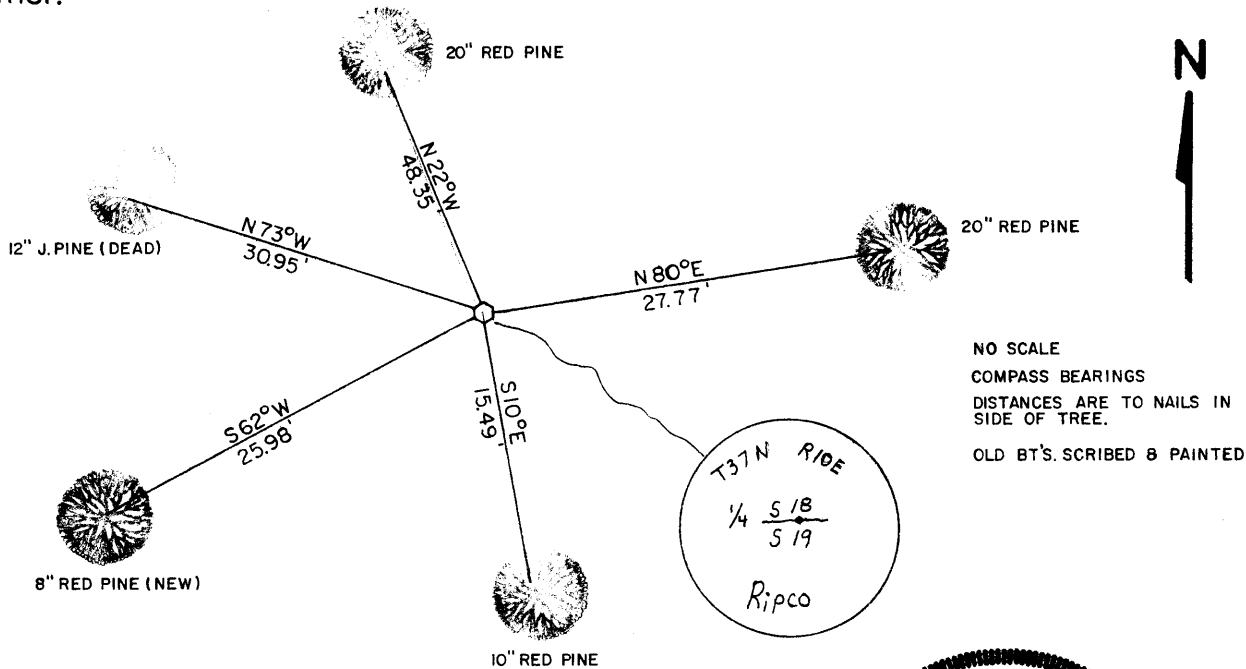
1-3-2007 I FOUND A 1 1/2" IRON PIPE WITH ALUM. CAP 18" ABOVE GROUND. I ACCEPTED AND USED AS THE CORNER IN SUBDIVISION OF SECTION 19. FOUND 4 OLD BT'S WITH ALUM. NAILS IN SIDE; TREES WERE BLAZED. 12" J. PINE DEAD. MADE NEW BT. SHOWN BELOW.

REGISTER OF DEEDS OFFICE  
ONEIDA COUNTY, WIS.



At \_\_\_\_\_ O'Clock \_\_\_\_\_ M  
**THOMAS H. LEIGHTON**  
REGISTER OF DEEDS

(c) (d) (e) Plan view of corner with ties to at least 4 witness monuments. If in disagreement with previously established corner, show the distances between the two corners and also indicate the ties to the disputed corner.



(i) I, RUSSELL F. BROWN  
(type or print name) certify that the corner location on this record was determined by me or under my direction and control and that this U.S. Public Land Survey Monument Record is correct and complete to the best of my knowledge and belief.

Russell F. Brown 2/15/07  
Signature Date



3710180020

Index No. N 3