

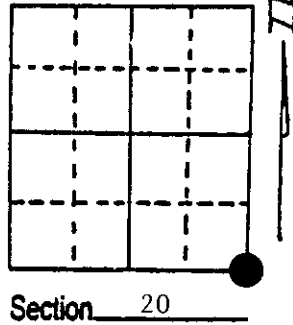
# U.S. PUBLIC LAND SURVEY MONUMENT RECORD

**Note:** This form is intended and designed to fulfill all requirements of Wisconsin Administrative Code, Chapter A-E 7.08 U.S. Public Land Survey Monument Record (3) (a) (b) (c) (d) (e) (f) (g) (h) (i). An additional sheet may be added if necessary to conform with said requirements.

(a) Corner location: Township 37 North  
 Range 10 East/West

Town/City/Village Stella

County Oneida



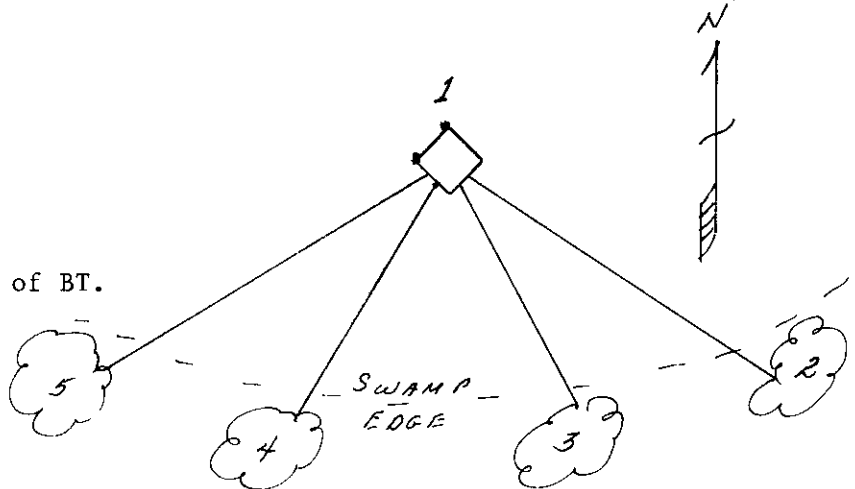
(b) (f) (g) (h) Description of monument found at this corner and if it was accepted, state all evidence (material, testimonial, occupational, plats, records, other monuments) used as a basis for accepting. If not accepted or if nothing was found, state evidence used as basis for establishing location. If reestablished through lost corner proportionate methods, indicate all monuments, distances and directions used to establish. Indicate type of monument found or set and sign post.

- 1863 - William Daugherty established this corner and set a wood post with BTs:  
 8" Tamarack, N64°E, 45 Links      6" Tamarack, S35°W, 12 Links
- 1933 - Hall restored corner with a 6" x 6" concrete monument.
- 1953 - BLM located Hall monument and used it in the Dependent Resurvey of Sections 29 and 30. They made BTs:  
 10" Jack Pine, S17 3/4°E, 146 Links      7" Jack Pine, S1°-38'W, 160 1/2 Links
- 4/5/1989 - Milo E. Stefan found Hall's concrete monument under 3' of water with GLO BTs. Southeast one a stump, Southwest one live. We placed a 4" x 12' Jack Pine post along side of monument with plastic sign post nailed to it. We also made new BTs.

(c) (d) (e) Plan view of corner with ties to at least 4 witness monuments. If in disagreement with previously established corner, show the distances between the two corners and also indicate the ties to the disputed corner.

- 1) 6" x 6" Concrete monument with Jack Pine post along side.
- 2) 16" Red Pine, S61°E, 149.16'
- 3) 8" Jack Pine, S30°E, 96.40'
- 4) 4" Red Oak, S19°W, 142.96'
- 5) 11" Red Pine, S38°W, 259.24'

Distances with EDM to nail inside of BT.  
 BTs scribed "BT" in stump blaze.



(i) I, Milo E. Stefan  
 (type or print name) certify that the corner location on this record was determined by me or under my direction and control and that this U.S. Public Land Survey Monument Record is correct and complete to the best of my knowledge and belief.

Milo E. Stefan      8/10/89  
 Signature      Date



Index No. R-9

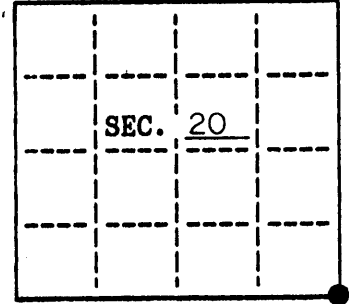
**U.S. PUBLIC LAND SURVEY MONUMENT RECORD**

Note: This form is intended and designed to fulfill all requirements of Wisconsin Administrative Code, Chapter A-E 7.08 U.S. Public Land Survey Monument Record (3)(a)(b)(c)(d)(e)(f)(g)(h)(i). An additional sheet may be added if necessary to conform with said requirements.

**(a) CORNER LOCATION:**

SE corner of Sec. 20  
 Township 37 North  
 Range 10 East  
 Town/City STELLA

~~State Plane~~ **Coordinates**  
 ONEIDA COUNTY  
 X 302260.629  
 Y 177192.491  
 Datum Base \_\_\_\_\_  
 County of ONEIDA



**(b) HISTORY OF ORIGINAL CORNER ESTABLISHMENT**

Original Surveyor: WILLIAM DAUGHERTY  
 Date of Survey: Commenced 1863  
 Completed 1863

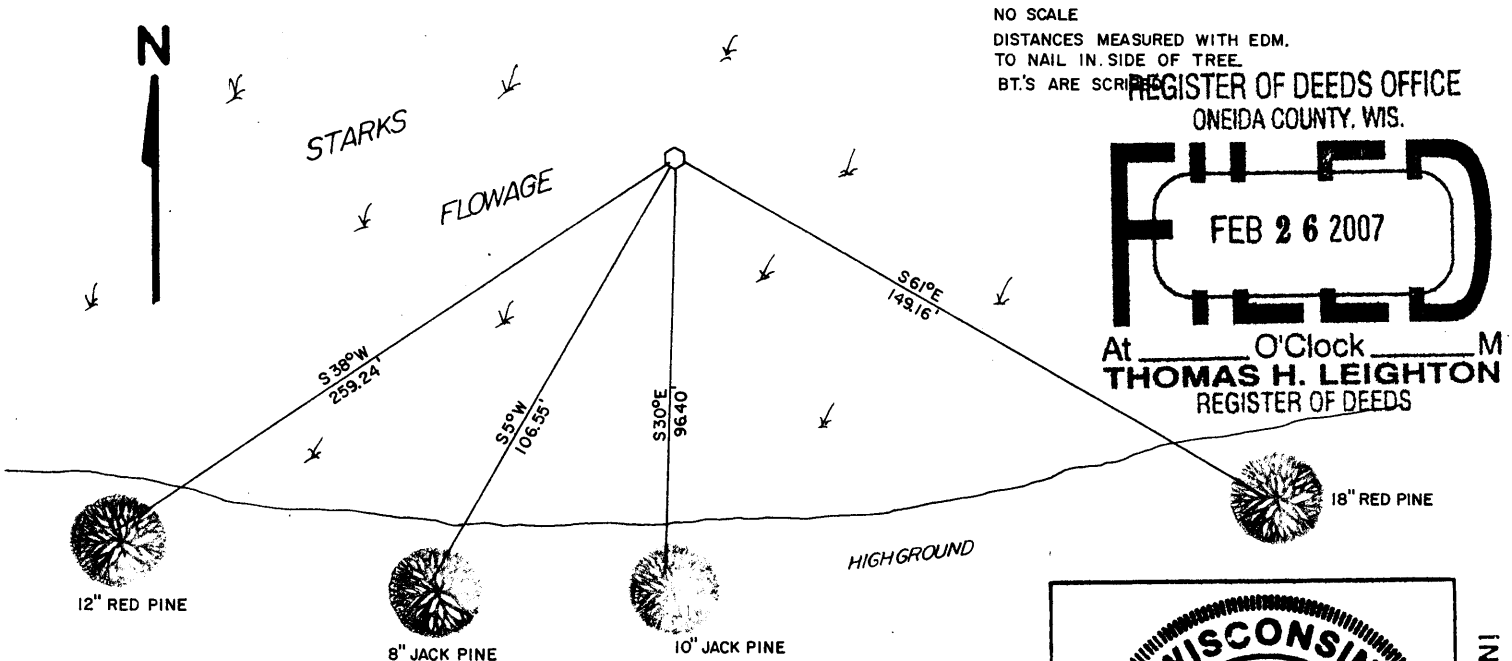
**Original B.T.'s**

8" TAM. N64°E 45 LKS.  
 6" TAM. S35°W 12 LKS.

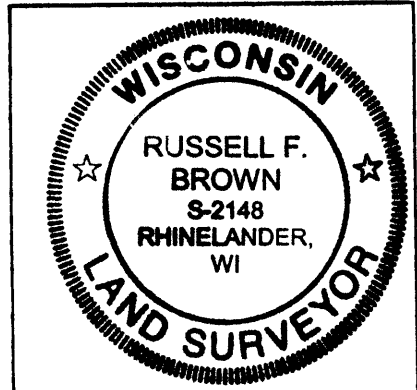
(b)(f)(g)(h) Description of monument found at this corner and if it was accepted, state all evidence (material, testimonial, occupational, plats, records, other monuments) used as a basis for accepting. If not accepted or if nothing was found, state evidence used as basis for establishing location. If reestablished through lost corner proportionate methods, indicate all monuments, distances and directions used to establish. Indicate type of monument and sign post found or set.

- 1933 HALL RESTORED CORNER WITH A 6"X 6" CONCRETE MONUMENT.
- 1953 BLM LOCATED HALL'S MONUMENT AND USED IT IN THE DEPENDENT RESURVEY OF SECTIONS 29 & 30 MADE BT'S: 10" J.PINE S17 3/4°E, 146 LKS. 7" J.PINE S1°38' W, 160 1/2 LKS.
- 4-5-89 MILO STEFAN FOUND HALL'S CONCRETE MONUMENT UNDER 3' OF WATER WITH GLO BT'S. SE ONE A STUMP, SW ONE LIVE. PLACED A 4"X 12" J.PINE POST ALONG SIDE OF MONUMENT WITH PLASTIC SIGN POST NAILED TO IT. MADE NEW BT'S.
- 1-3-07 I FOUND THE CONCRETE MONUMENT LYING ON ITS SIDE IN ABOUT 3' OF WATER. SET A 5' ONEIDA COUNTY MONUMENT FROM 3 EXISTING BT'S. (THE RED OAK NOW GONE). SET WHITE POST ALONG SOUTH SIDE. SET NAIL IN SIDE OF OLD BT. SHOWN BELOW  
 G.P.S COORDINATES OBTAINED WITH TRIMBLE 5700-5800 R.T.K. MEASURED DIRECT ON TWO SEPARATE DAYS, I USED HARN 241S AND THE NE CORNER SECTION 20, (CALIBRATION POINTS) AND CHECKED INTO THE S1/4 OF SECTION 20.

(c)(d)(e) Plan view of corner with ties to at least 4 witness monuments. If in disagreement with previously established corner, show the distances between the two corners and also indicate the ties to the disputed.



REGISTER OF DEEDS OFFICE  
 ONEIDA COUNTY, WIS.  
**FILED**  
 FEB 26 2007  
 At \_\_\_\_\_ O'Clock \_\_\_\_\_ M  
**THOMAS H. LEIGHTON**  
 REGISTER OF DEEDS



(i) I, RUSSELL F. BROWN  
 hereby certify that the corner location on this record was determined by me or under my direction and control and that this U.S. Public Land Survey Monument Record is correct and complete to the best of my knowledge and belief.

Russell F. Brown 1/19/07  
 Signature Date

3710200000

INDEX NO. R 9